

- › [Lithonia Lighting](#) /
- › [Lithonia Lighting CPX 2x2 LED Flat Panel Light Instruction Manual](#)

Lithonia Lighting CPX 2X2 3200LM 40K A12 M4

Lithonia Lighting CPX 2x2 LED Flat Panel Light Instruction Manual

Model: CPX 2X2 3200LM 40K A12 M4

[Introduction](#) [Safety Information](#) [Items Needed](#) [Setup](#) [Operating](#)
[Instructions](#) [Maintenance](#) [Troubleshooting](#) [Specifications](#) [Warranty](#) [Support](#)

1. INTRODUCTION

This manual provides detailed instructions for the safe installation, operation, and maintenance of your Lithonia Lighting CPX 2x2 LED Flat Panel Light. This energy-efficient fixture delivers 3200 lumens of 4000K cool white light, suitable for various commercial and residential applications. Please read this manual thoroughly before installation and retain it for future reference.

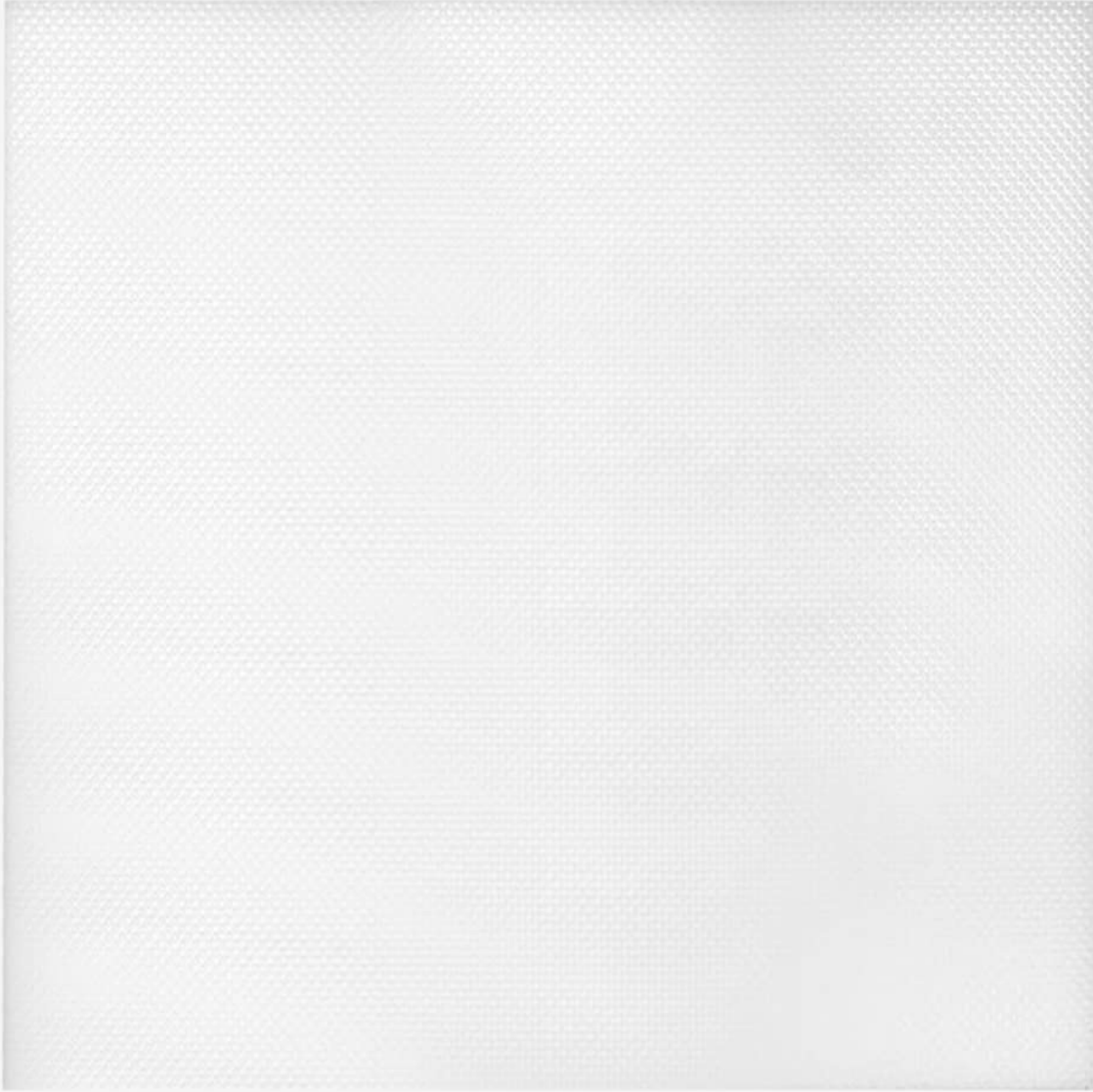


Figure 1: Lithonia Lighting CPX 2x2 LED Flat Panel Light

2. SAFETY INFORMATION

WARNING: Risk of electric shock. Disconnect power at the circuit breaker before installation or servicing. All wiring must be performed by a qualified electrician in accordance with national and local electrical codes.

- Always wear safety glasses and gloves during installation.
- Ensure the fixture is properly grounded.
- Do not install in locations where the operating temperature exceeds the fixture's rated temperature.
- This fixture is designed for indoor use in damp locations.
- Do not modify the fixture in any way.

3. ITEMS NEEDED FOR INSTALLATION

The following tools and materials are typically required for installation:

- Screwdriver
- Wire strippers

- Safety glasses
- Gloves
- Wire nuts (included with fixture)
- Pliers (optional, for knockouts)

4. SETUP AND INSTALLATION

The Lithonia Lighting CPX LED Flat Panel Light is designed for easy installation in recessed or T-grid ceilings. Follow these steps for a safe and successful setup.

4.1 Installation Overview Video

Your browser does not support the video tag.

Video 1: CPX Installation Guide. This video demonstrates the recessed T-grid ceiling installation process for the CPX LED panel.

4.2 Step-by-Step Installation

1. **Turn off Power:** Before beginning any work, turn off the power at the main circuit breaker to avoid electric shock. Ensure proper personal protective equipment (PPE) is worn.
2. **Position Fixture:** Place the CPX panel into the T-grid ceiling opening.
3. **Access Driver Box:** Remove or push aside the adjacent ceiling tile to access the CPX driver box, located on the side of the fixture. This provides easier access for wiring.
4. **Secure Fixture:** From inside the plenum (the space above the ceiling tiles), bend each integrated T-grid clip away from the fixture housing and secure it onto the T-grid railing.
5. **Prepare Wiring:** Use a screwdriver to remove the screw securing the driver access plate. Punch out one of the knockout holes in the access plate to pull your incoming power wire through.
6. **Make Electrical Connections:** Connect the power wires to the wires in your CPX driver box according to local NEC code requirements.
 - Connect white to white using an orange wire nut.
 - Connect black to black using an orange wire nut.
 - Connect green to green (ground) using an orange wire nut.
 - If not using the dimming feature, cap off the purple and grey wires with included orange wire nuts and tuck them back into the driver box.
7. **Close Driver Box:** Tuck all wires back into the driver box. Replace the access plate and secure it with the screw.
8. **Restore Power:** Once all connections are secure and the driver box is closed, restore power at the main circuit breaker.

Installation Guide

Easily Install In 6 Simple Steps



Turn off the power at the breaker and put on the correct PPE.



Place the CPX panel into grid ceiling.



Remove the ceiling tile adjacent to the CPX Driver box.



To secure fixture, bend each integrated t-grid clip away from the fixture housing and secure onto the t-grid railing.



Remove driver box access plate and knockouts. Then make all connections per local NEC code requirements.



Tuck all wires back into the driver box, replace access plate, and restore power.

5. OPERATING INSTRUCTIONS

The Lithonia Lighting CPX LED Flat Panel Light is designed for straightforward operation once installed.

5.1 Power On/Off

The fixture operates via a standard wall switch connected to your electrical circuit. Flip the switch to turn the light on or off.

5.2 Dimming Functionality

This fixture is compatible with 0-10 volt dimmer switches, allowing you to adjust the light output down to 10 percent. Ensure your dimmer switch is compatible with 0-10V LED drivers for optimal performance. If a dimmer is not used, the light will operate at full brightness.

5.3 Color Temperature

This specific model provides 4000K Cool White light, which is ideal for task-oriented environments like offices, schools, and workshops. Other CPX models may offer adjustable color temperatures, but this model is fixed at 4000K.



Figure 3: A visual guide illustrating different color temperatures, from soft white to daylight. This CPX model provides 4000K Cool White light.

6. MAINTENANCE

The Lithonia Lighting CPX LED Flat Panel Light requires minimal maintenance due to its long-life LED components.

- **Cleaning:** Ensure power is off before cleaning. Wipe the surface of the fixture with a soft, damp cloth. Do not use abrasive cleaners or solvents, as these may damage the finish or optical components.
- **LED Lifespan:** The LEDs are designed for a lifespan of 50,000 hours with greater than 70% lumen maintenance, meaning no bulb replacement is necessary under normal operating conditions.
- **Inspection:** Periodically inspect the fixture for any signs of damage or loose connections. If any issues are found, disconnect power and consult a qualified electrician.

7. TROUBLESHOOTING

If your CPX LED Flat Panel Light is not functioning correctly, refer to the following common issues and solutions:

Problem	Possible Cause	Solution
Light does not turn on	No power to the fixture; Loose wiring connection; Faulty switch or circuit breaker.	Check circuit breaker and wall switch. Verify all wire connections are secure. Consult a qualified electrician if the problem persists.
Light flickers or buzzes	Incompatible dimmer switch; Loose wiring; Voltage fluctuations.	Ensure dimmer is 0-10V compatible. Check all wire connections. Consult an electrician for voltage issues.
Light is too dim or too bright	Dimmer setting; Incorrect wiring for dimming.	Adjust dimmer setting. Verify dimming wires (purple and grey) are correctly connected or capped off if not used.

If these steps do not resolve the issue, please contact customer support.

8. SPECIFICATIONS

Feature	Detail
Brand	Lithonia Lighting
Model Number	CPX 2X2 3200LM 40K A12 M4
Dimensions (L x W x H)	23.82" x 23.82" x 1.68"
Light Output	3200 Lumens
Color Temperature	4000K Cool White
Material	Aluminum
Voltage	120-277 Volts (MVOLT)
Wattage	32 Watts
Dimming	0-10V Dimmable (dims to 10%)
Lifespan	50,000 hours (L70)
Certifications	CSA certified, IC rated, DLC qualified, Damp location rated
Installation Type	Recessed, Surface, Suspended

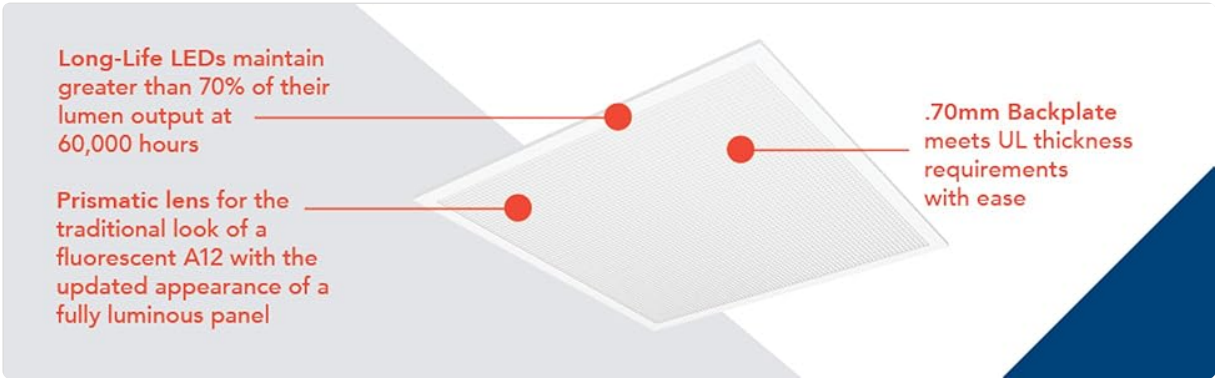


Figure 4: Dimensions of the CPX 2x2 LED Flat Panel Light.

9. WARRANTY

This Lithonia Lighting CPX LED Flat Panel Light comes with a **5-year limited warranty**. This warranty covers defects in materials and workmanship under normal use and service. For full warranty details and claims, please refer to the official Lithonia Lighting website or contact customer support.

10. CUSTOMER SUPPORT

If you have any questions, require technical assistance, or need to make a warranty claim, please contact Lithonia Lighting customer support:

- **Website:** www.lithonia.com
- **Phone:** Refer to the product packaging or website for the most current contact number.

Please have your model number (CPX 2X2 3200LM 40K A12 M4) and date of purchase available when contacting support.