

Morimoto LF268

Morimoto Sealed5 LED Headlight Housing Replacement User Manual

Model: LF268 | Brand: Morimoto

1. PRODUCT OVERVIEW

The Morimoto Sealed5 (5x7) LF268 is a universal BI-LED headlight housing replacement designed to provide ultra-bright illumination with integrated switchback Daytime Running Lights (DRLs). This assembly is engineered for flicker and error-free operation, offering a plug-and-play installation and is DOT approved.

Key Features:

- BI-LED Technology for superior light output.
- Integrated Switchback DRLs for enhanced visibility and style.
- Flicker and Error-Free operation, ensuring compatibility with vehicle electronics.
- Plug and Play Assembly for simplified installation.
- DOT Approved for legal road use.
- Durable construction with polycarbonate lens material.

2. WHAT'S IN THE BOX

Each package contains the following components:

- One (1) Morimoto Sealed5 LED Headlight Housing (Model LF268)
- Associated wiring harness for plug-and-play connection.



Figure 2.1: Front view of the Morimoto Sealed5 LED Headlight, showcasing its clear lens and internal LED arrangement.



Figure 2.2: Rear view of the Morimoto Sealed5 LED Headlight, showing the heat sink design and the included wiring harness with connectors.

3. SETUP AND INSTALLATION

Installation of the Morimoto Sealed5 LED Headlights is designed to be plug-and-play for most compatible vehicles. Professional installation is recommended for optimal performance and safety.

3.1 Pre-Installation Checklist:

- Ensure the vehicle's ignition is off and the battery is disconnected.
- Verify the headlight size (5x7 inch) matches your vehicle's existing headlight housing.
- Gather necessary tools (e.g., screwdrivers, wrenches, wire strippers/crimpers if custom wiring is needed for DRL/switchback functions).

3.2 Installation Steps:

1. Carefully remove the existing headlight assembly from your vehicle. Refer to your vehicle's service manual for specific instructions.
2. Disconnect the electrical connector from the old headlight.
3. Connect the Morimoto Sealed5 LED Headlight to the vehicle's existing headlight harness. The plug-and-play design should allow for direct connection.
4. For the DRL and switchback functions, connect the additional wires as follows:
 - **DRL Wire:** Connect to a switched 12V power source that is active when the vehicle is on (e.g., fuse box, accessory wire).
 - **Turn Signal Wire:** Connect to the vehicle's positive turn signal wire for the switchback function.
5. Carefully mount the new Morimoto Sealed5 LED Headlight into the vehicle's headlight housing. Ensure it is securely fastened.
6. Reconnect the vehicle's battery.
7. Test all headlight functions: low beam, high beam, DRLs, and turn signals (switchback).
8. Perform headlight aiming adjustment according to local regulations and best practices to ensure proper beam pattern and avoid blinding oncoming traffic.



Figure 3.1: Two Morimoto Sealed5 LED Headlights, illustrating their compact design suitable for universal 5x7 applications.



Figure 3.2: A closer view of two Morimoto Sealed5 LED Headlights, highlighting the distinct optical elements for different light functions.

4. OPERATING INSTRUCTIONS

The Morimoto Sealed5 LED Headlights operate in conjunction with your vehicle's existing headlight controls. The integrated DRL and switchback turn signal functions activate automatically based on wiring connections.

4.1 Headlight Functions:

- **Low Beam:** Activates when your vehicle's low beam headlights are turned on. Provides a broad, even light distribution for general driving.
- **High Beam:** Activates when your vehicle's high beam headlights are turned on. Provides maximum light output for extended visibility.
- **Daytime Running Lights (DRLs):** The integrated DRLs illuminate when the vehicle is running and the DRL wire is connected to a switched 12V source. These provide enhanced daytime visibility.
- **Switchback Turn Signals:** When the turn signal is activated, the DRLs on the corresponding side will switch from white to amber and flash, then return to white DRL mode when the turn signal is disengaged.



Figure 4.1: The Morimoto Sealed5 LED Headlights with their bright white Daytime Running Lights (DRLs) illuminated.



Figure 4.2: The Morimoto Sealed5 LED Headlights demonstrating the amber illumination of the switchback turn signal function.



Figure 4.3: Example of the low beam pattern projected by the Morimoto Sealed5 LED Headlight, showing a clear cutoff line.

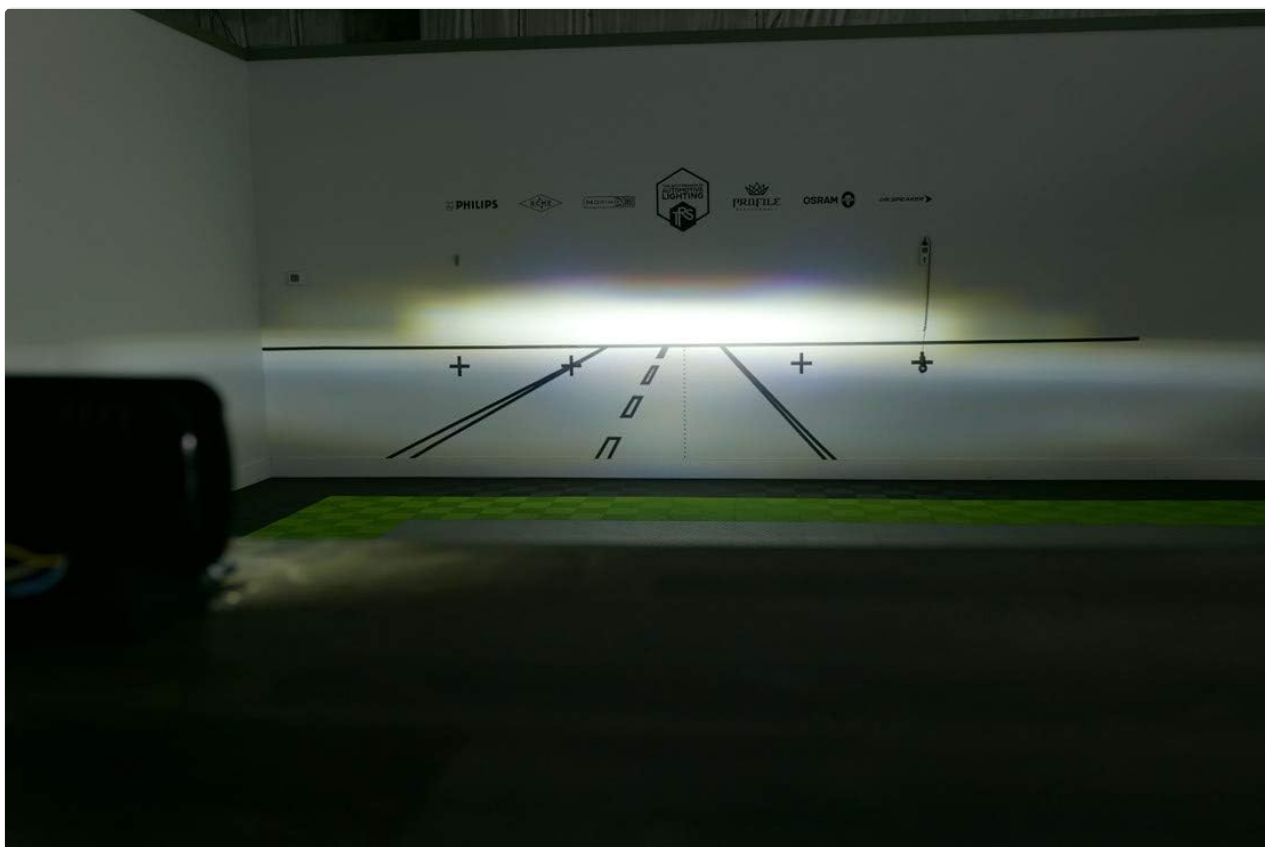


Figure 4.4: Example of the high beam pattern projected by the Morimoto Sealed5 LED Headlight, demonstrating increased light output and spread.

5. MAINTENANCE

The Morimoto Sealed5 LED Headlights are designed for long-term, maintenance-free operation. However, periodic cleaning and inspection are recommended to ensure optimal performance and longevity.

5.1 Cleaning:

- Clean the headlight lenses regularly with a soft cloth and mild soap and water.
- Avoid abrasive cleaners or harsh chemicals, as these can damage the polycarbonate lens material.
- Rinse thoroughly with clean water and dry with a soft, lint-free cloth.

5.2 Inspection:

- Periodically check the headlight assembly for any signs of damage, such as cracks in the lens or housing.
- Ensure all wiring connections remain secure and free from corrosion.
- Verify that the headlights are securely mounted and not loose.

6. TROUBLESHOOTING

This section addresses common issues that may arise during the use of your Morimoto Sealed5 LED Headlights.

Problem	Possible Cause	Solution
Headlight not illuminating.	Loose connection, blown fuse, incorrect wiring.	Check all electrical connections. Inspect vehicle's headlight fuse. Verify wiring against installation instructions.
Flickering or intermittent operation.	Insufficient power, loose connection, vehicle electrical system incompatibility.	Ensure stable 12V power supply. Re-secure connections. While designed to be error-free, some vehicles may require additional resistors (not typically needed for this model). Consult a professional if issue persists.
DRLs or Switchback not working.	Incorrect DRL/turn signal wire connection, no power to DRL wire.	Verify DRL wire is connected to a switched 12V source. Ensure turn signal wire is connected to the correct positive signal wire.
Condensation inside lens.	Temperature changes, minor seal breach.	Small amounts of condensation are normal and should dissipate. If excessive or persistent, inspect seals for damage.

7. SPECIFICATIONS

Attribute	Detail
Brand	Morimoto
Model	LF268
Headlight Type	Sealed Beam LED (5x7 inch / H6054, H5054, HP6054 equivalent)
Light Source	BI-LED
DRL Function	Integrated Switchback (White DRL / Amber Turn Signal)
Lens Material	Polycarbonate
Color	Clear
Wattage	35 watts (High Beam)
DOT Approved	Yes
Item Weight	1 pound (per headlight)
Package Dimensions	5.75 x 3.75 x 0.3 inches (approximate, per headlight)
UPC	840203303733

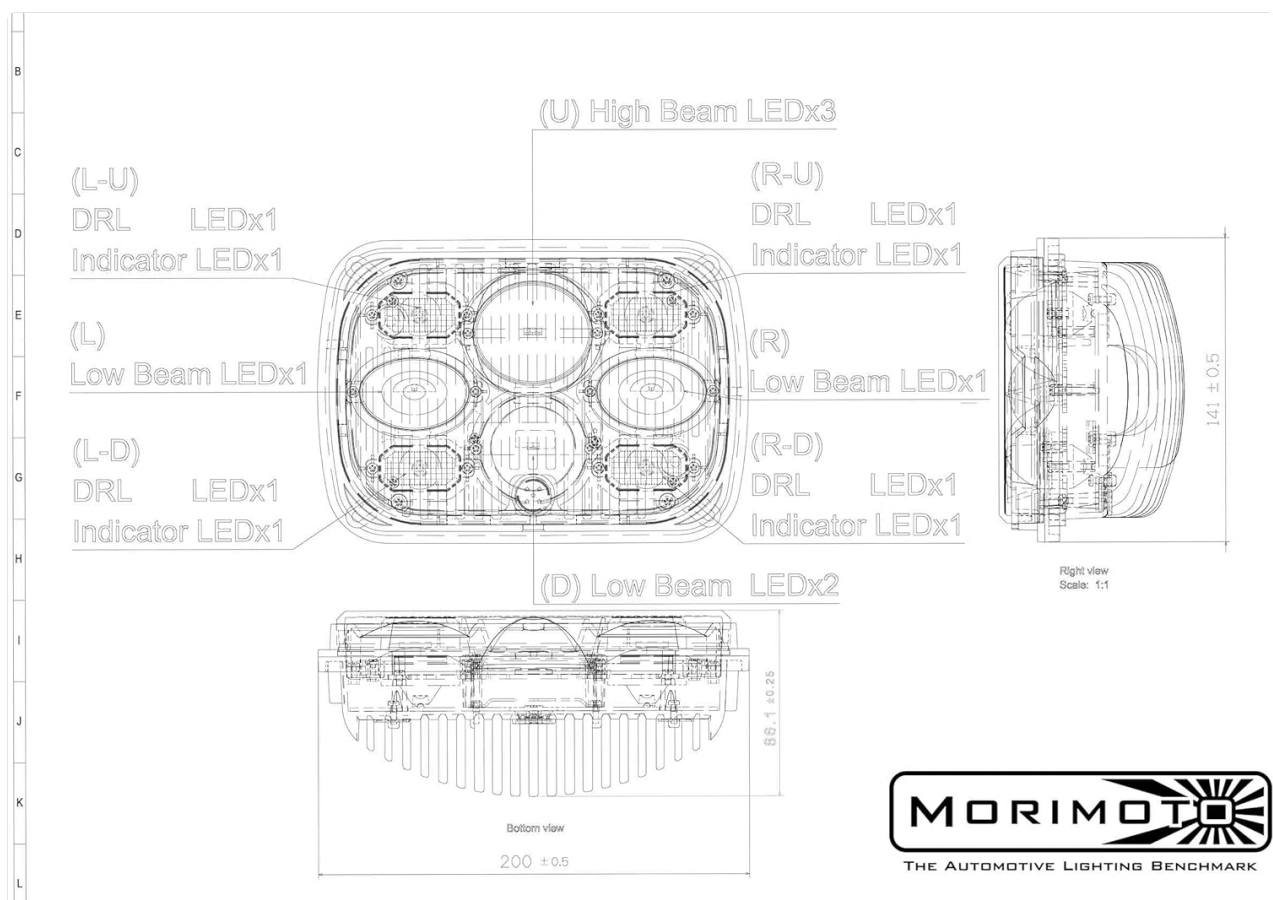


Figure 7.1: Technical diagram providing dimensions and component labels for the Morimoto Sealed5 LED Headlight.

8. WARRANTY AND SUPPORT

Morimoto products are known for their quality and durability. For specific warranty information regarding your Sealed5 LED Headlights, please refer to the warranty card included with your product or visit the official Morimoto website.

For technical support, installation assistance, or warranty claims, please contact Morimoto customer service through their official channels. Keep your purchase receipt as proof of purchase.

Manufacturer: Morimoto

Official Website: www.morimotohid.com

© 2024 Morimoto. All rights reserved.

This manual is for informational purposes only. Specifications are subject to change without notice.