



Manuals.plus /

- › YOUkei /
- › YOUkei Stainless Steel Metal Replacement Strap Bracelet for OnePlus Watch User Manual

YOUkei OnePlus Watch Band

YOUkei Stainless Steel Metal Replacement Strap Bracelet User Manual

Model: Compatible with OnePlus Watch | Brand: YOUkei

1. INTRODUCTION

This manual provides comprehensive instructions for the installation, adjustment, and maintenance of your YOUkei Stainless Steel Metal Replacement Strap Bracelet, designed for compatibility with the OnePlus Watch. Please read this manual carefully to ensure proper use and care of your new watch band.

2. PRODUCT OVERVIEW

The YOUkei Stainless Steel Metal Replacement Strap Bracelet is crafted from high-quality stainless steel, offering durability and a refined aesthetic for your OnePlus Watch. It features a secure double-button folding clasp and quick-release pins for easy attachment.



Figure 2.1: OnePlus Watch fitted with the YOUkei Rose Gold Stainless Steel Band.

Key Features:

- **Premium Stainless Steel:** Durable and stylish construction.
- **Double Button Folding Clasp:** Provides a secure and easy-to-operate closure.
- **Quick Release Pins:** Facilitates simple attachment and detachment from your smartwatch.
- **Adjustable Length:** Can be resized to fit various wrist sizes using the included tool.



DOUBLE BUTTON FOLDING CLASP

Security buckle, easily to lock and unlock.



Figure 2.2: Detail of the double button folding clasp, designed for secure locking and easy unlocking.

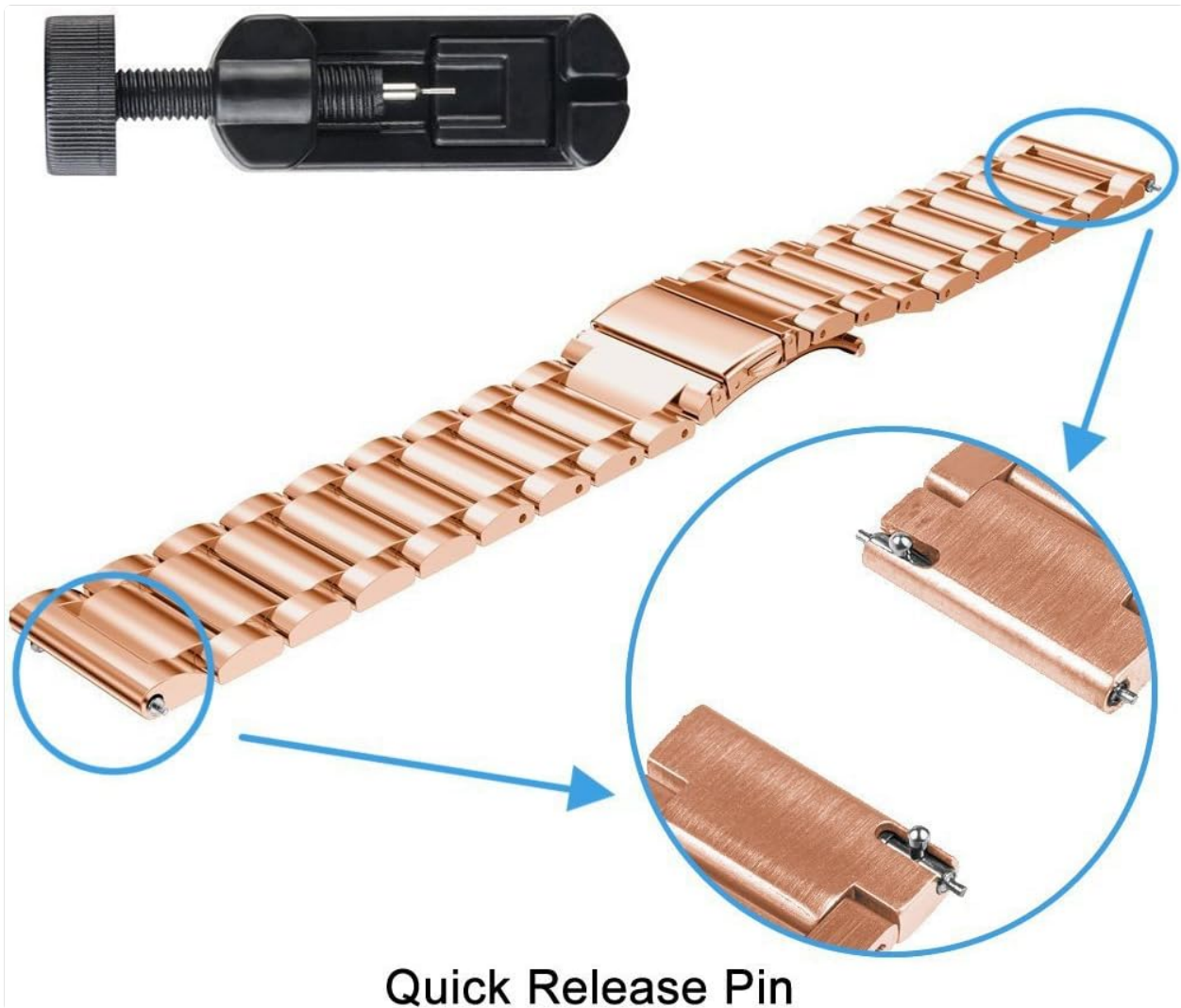


Figure 2.3: Illustration of the quick release pins for easy band attachment and the included link removal tool.

3. SETUP AND INSTALLATION

3.1 Attaching the Band to Your OnePlus Watch

1. Locate the quick release pins on each end of the watch band.
2. Align one end of the pin with the lug hole on your OnePlus Watch.
3. Pull the small lever on the quick release pin inwards, then slide the other end of the pin into the corresponding lug hole on the watch.
4. Release the lever, ensuring the pin is securely seated in both lug holes. Gently tug on the band to confirm it is locked in place.
5. Repeat the process for the other side of the watch band.

3.2 Adjusting Band Length (Link Removal)

The band can be adjusted to fit wrist sizes between 5.71" and 8.19" (145mm-208mm). Use the provided link removal tool to add or remove links for a comfortable fit.

Link Removal Tool Instructions

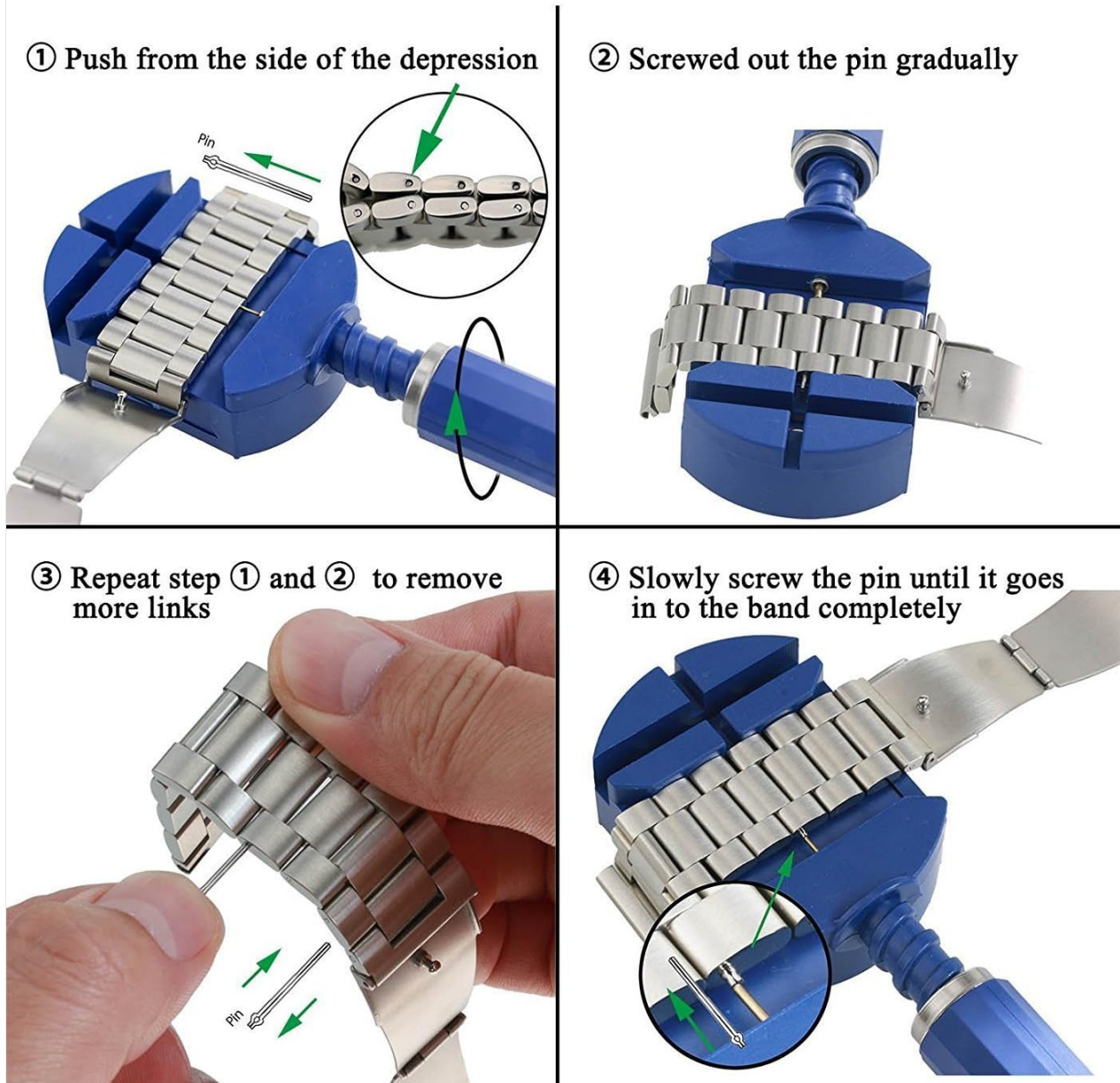


Figure 3.1: Visual guide for using the link removal tool to adjust the band length.

1. **Step 1:** Place the band in the link removal tool with the pin facing the side of the depression. Push the pin from the side of the depression.
2. **Step 2:** Slowly screw out the pin using the tool until it is fully extracted from the link.
3. **Step 3:** Repeat steps 1 and 2 to remove additional links as needed. Ensure you remove an equal number of links from both sides of the clasp for balanced wear.
4. **Step 4:** To reassemble, align the links and slowly screw the pin back into the band until it is completely inserted and flush with the band surface.

Note: Be careful not to lose any small parts during the link removal process. If you are unsure, seek professional assistance.

4. OPERATING INSTRUCTIONS

4.1 Using the Double Button Folding Clasp

- To open the clasp, press both side buttons simultaneously. The clasp will release, allowing you to put on or take off the watch.
- To close the clasp, fold the two parts of the clasp together until they click securely into place. Ensure both buttons are fully engaged for a secure fit.

5. MAINTENANCE

5.1 Cleaning Your Stainless Steel Band

- Wipe the band regularly with a soft, damp cloth to remove dirt, oils, and sweat.
- For deeper cleaning, use a mild soap solution and a soft brush (like a toothbrush) to gently scrub the links and clasp. Rinse thoroughly with clean water.
- Dry the band completely with a soft, lint-free cloth immediately after cleaning to prevent water spots or corrosion.

5.2 General Care Tips

- Avoid exposing the band to harsh chemicals, strong detergents, or abrasive materials, as these can damage the finish.
- While stainless steel is durable, avoid excessive force or bending that could deform the links or clasp.
- Store the band in a clean, dry place when not in use, preferably in a soft pouch to prevent scratches.

6. TROUBLESHOOTING

Problem	Possible Cause	Solution
Band does not attach securely to the watch.	Quick release pins not fully engaged in lug holes.	Ensure both ends of the quick release pin are properly seated in the watch lugs. Gently tug to confirm security.
Clasp does not close or open smoothly.	Dirt or debris in the clasp mechanism; clasp misaligned.	Clean the clasp thoroughly. Check for any visible damage or misalignment. Do not force the clasp.
Difficulty removing/inserting links.	Pin is stuck or tool is not aligned correctly.	Ensure the link removal tool's pin is perfectly aligned with the band pin. Apply steady, even pressure. Do not bend the tool.

7. SPECIFICATIONS

Feature	Detail
Material	Stainless Steel
Color	Rose Gold
Compatibility	OnePlus Watch
Adjustable Wrist Size	5.71" - 8.19" (145mm - 208mm)
Item Weight	3.77 ounces
Special Features	Adjustable, Quick Release Pins, Double Button Folding Clasp

8. WARRANTY AND SUPPORT

8.1 Warranty Information

For 30 days after the date of purchase, YOUkei addresses all quality-related issues with a replacement or refund. Please retain your proof of purchase for warranty claims.

8.2 Customer Support

If you encounter any issues or have questions regarding your YOUkei Stainless Steel Metal Replacement Strap Bracelet, please contact the seller directly through the platform where you made your purchase. For defective items, please contact us at the first opportunity.