

VISWIN ELAF_W01DN_V

VISWIN Adjustable & Foldable Beech Wood Art Easel Instruction Manual

Model: ELAF_W01DN_V

1. INTRODUCTION

Thank you for choosing the VISWIN Adjustable & Foldable Beech Wood Art Easel. This easel is designed for artists, students, and beginners, offering a stable and versatile platform for painting and display. Crafted from premium beech wood, it features adjustable height and angle settings, a convenient canvas tray, and a foldable design for easy storage and transport. Please read this manual thoroughly before assembly and use to ensure proper operation and longevity of your easel.

2. SAFETY INFORMATION

- Ensure all parts are securely fastened before placing a canvas or artwork on the easel.
- Do not exceed the maximum loading capacity of 22 lbs (10 kg).
- Keep fingers clear of moving parts during adjustment to prevent pinching.
- Place the easel on a stable, level surface to prevent tipping.
- Keep away from excessive moisture or direct heat sources to preserve the wood.
- This easel is intended for indoor use.

3. PACKAGE CONTENTS

Verify that all components are present before beginning assembly. The package should include:

- Easel Frame Components (pre-drilled beech wood parts)
- Hardware Pack (screws, nuts, washers, wing nuts)
- Assembly Instructions Guide

If any parts are missing or damaged, please contact VISWIN customer support.

4. SETUP INSTRUCTIONS

The VISWIN Art Easel is designed for easy assembly. Follow the step-by-step instructions provided in the included guide. All wooden parts are labeled with easy-peel number stickers, and hardware is individually packed for convenience.

Assembly Steps:

1. Unpack all components and lay them out on a clean, flat surface.
2. Identify the main frame pieces and connect them according to the numbered labels and diagrams in the assembly guide.
3. Attach the canvas tray using the provided hardware, ensuring it can slide freely.
4. Secure all joints with the appropriate screws and wing nuts, tightening them firmly but without over-tightening to avoid damaging the wood.
5. Ensure the easel stands stably before use.

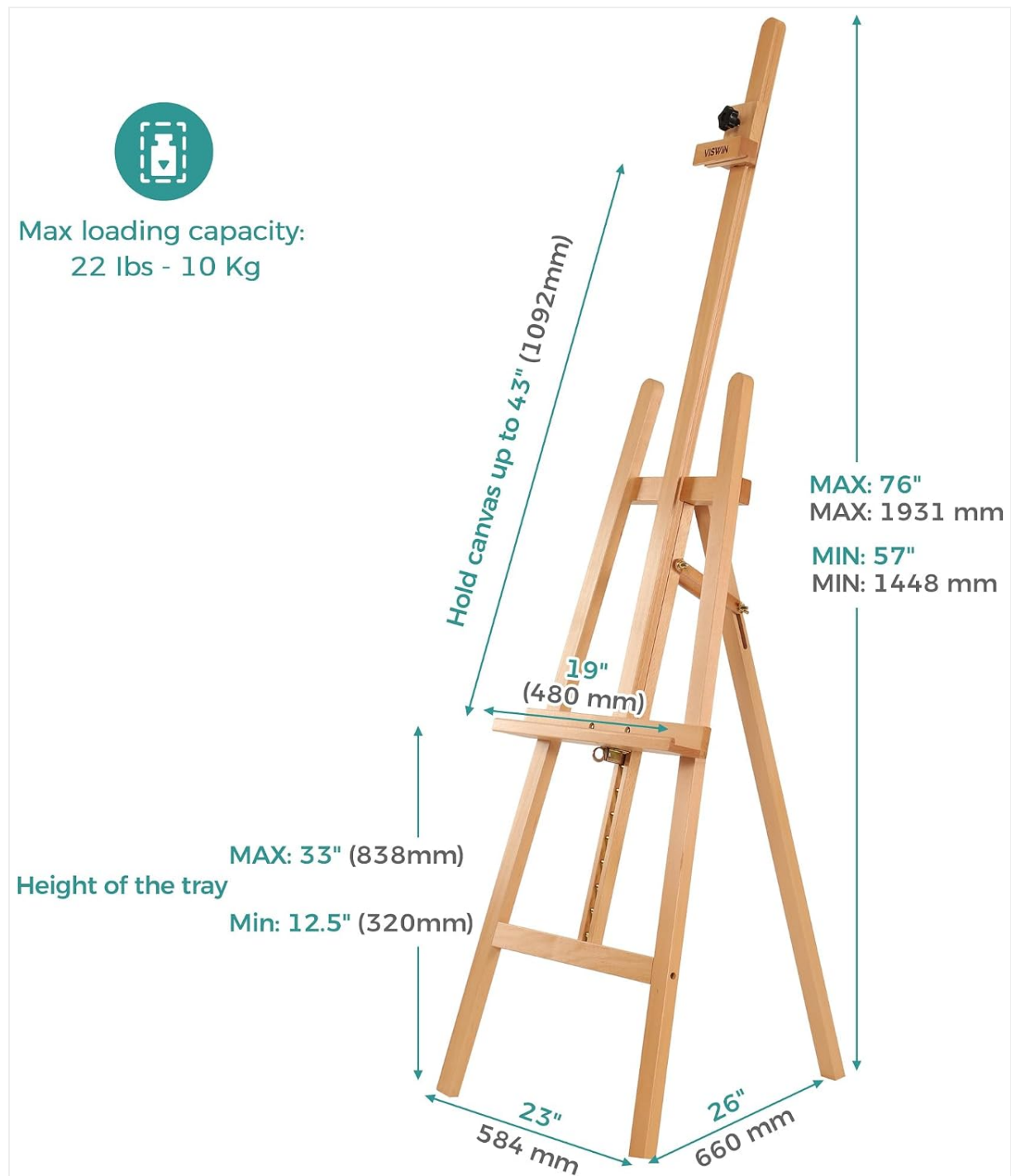


Image: Detailed diagram illustrating the easel's dimensions, including maximum canvas height (43 inches), overall height (57-76 inches), and tray height (12.5-33 inches).

Assembly Video Guide:

Video: Official VISWIN assembly and usage guide for the W01D A-frame easel. This video demonstrates the setup process, adjustment mechanisms, and how to position a canvas for painting.

5. OPERATING INSTRUCTIONS

Adjusting Height and Angle:

The easel features a smooth metal ratchet system for quick height adjustments of the canvas tray, from 12.5 inches to 33 inches. The top slider glides on the center mast to securely hold canvases up to 43 inches in height. You can also easily adjust the angle of the easel for your preferred working posture.

- To adjust the tray height: Loosen the wing nuts on the side of the tray, slide it to the desired position, and re-tighten. The metal ratchet mechanism provides secure locking.
- To secure the top of the canvas: Loosen the knob on the top slider, position it firmly against the top edge of your canvas, and tighten the knob.
- To adjust the easel angle: Loosen the adjustment knobs on the rear leg supports, set the easel to your desired tilt, and re-tighten the knobs.

Adjust Height Flexibly

Fits various canvas sizes up to 43"L



Image: Illustration demonstrating how the easel accommodates various canvas sizes by adjusting the height of the canvas tray and top clamp.

Tray with raised edge

Adjustable height

Secure the canvas

Keep organized



Image: Close-up view of the easel's 2-inch wide canvas tray, highlighting its raised edge designed to secure the canvas and hold art supplies like brushes.

Folding for Storage:

This A-frame easel can fold flat for easy transport and compact storage. Loosen the adjustment knobs on the rear leg supports and gently fold the easel inward until it lies flat. Ensure all components are secured before moving.

Adjustable Angle & Easy Storage

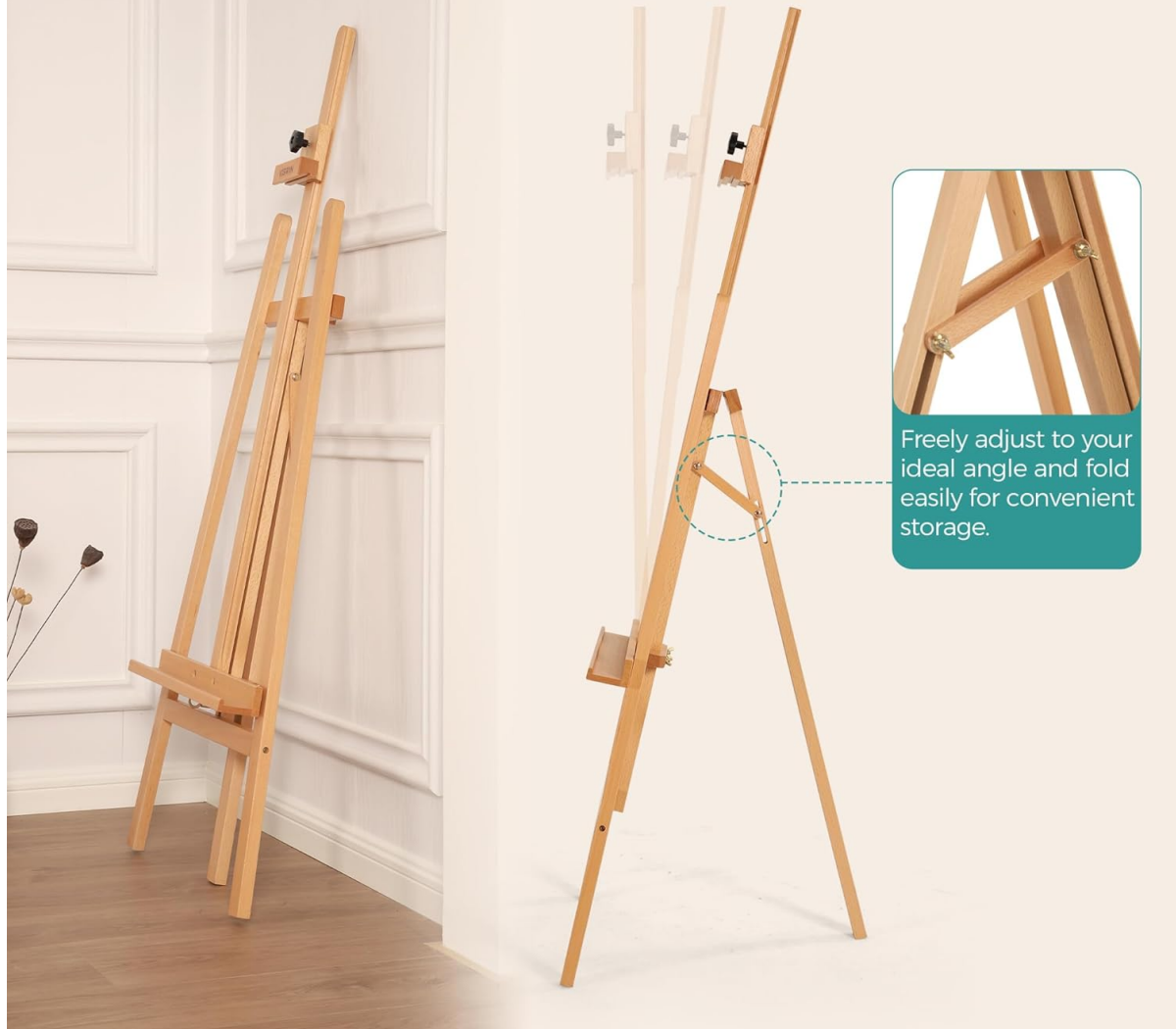
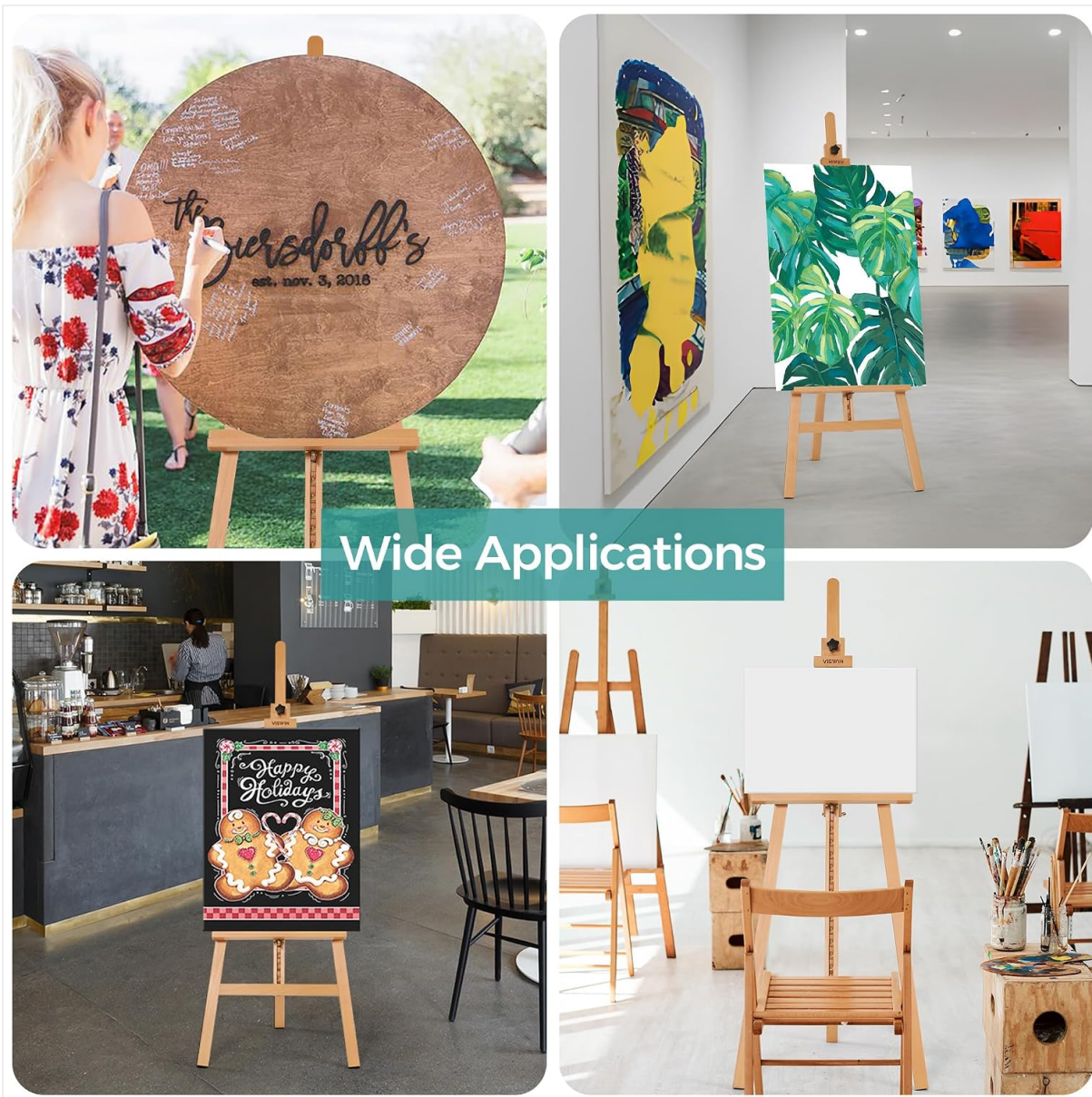


Image: Visual guide demonstrating the adjustable angle feature and how the easel folds flat for convenient storage.

Versatile Applications:

The easel is suitable for various uses beyond painting, including displaying wedding signs, artwork, posters, or framed pieces in studios, classrooms, or exhibitions.



Wide Applications

Image: A collage illustrating the wide range of applications for the easel, from holding canvases for painting to displaying signs at events.

6. MAINTENANCE

- Regularly check all screws and fasteners to ensure they are tight.
- Clean the beech wood surface with a soft, dry cloth. For stubborn marks, use a slightly damp cloth and dry immediately.
- Avoid using harsh chemicals or abrasive cleaners, which can damage the wood finish.
- Store the easel in a dry environment when not in use to prevent warping or damage to the wood.

7. TROUBLESHOOTING

Easel is unstable:

- Ensure all assembly screws and wing nuts are securely tightened.
- Verify the easel is placed on a flat, level surface.
- Check that the rear leg supports are fully extended and locked into position.

Canvas tray not adjusting smoothly:

- Ensure the wing nuts on the tray are sufficiently loosened before attempting to slide.
- Check for any obstructions in the ratchet mechanism or along the main mast.

Top slider not holding canvas:

- Ensure the knob on the top slider is tightened firmly against the canvas.
- Verify the canvas is properly seated in the tray below.

8. SPECIFICATIONS

Feature	Detail
Brand	VISWIN
Model Number	ELAF_W01DN_V
Material	Beech Wood
Color	Natural
Product Dimensions (D x W x H)	26" x 23" x 76" (660mm x 584mm x 1931mm)
Minimum Height	57" (1448mm)
Maximum Canvas Height	43" (1092mm)
Tray Height Adjustment	12.5" to 33" (320mm to 838mm)
Item Weight	12.13 Pounds (5.5 kg)
Maximum Loading Capacity	22 lbs (10 kg)
Assembly Required	Yes

9. WARRANTY AND SUPPORT

VISWIN is committed to providing high-quality products and ensuring customer satisfaction. This product comes with a lifetime guarantee. If you encounter any defects or issues with your easel due to non-external reasons under normal use, please do not hesitate to contact VISWIN customer support. We are dedicated to assisting you and will do our best to resolve any concerns.

For support, please visit the official VISWIN store or contact our customer service team through the platform where you purchased the product.