



[Manuals.plus](#) /

› [Sauder](#) /

› Sauder Beginnings Desk Instruction Manual, Model 429357

Sauder 429357

Sauder Beginnings Desk Instruction Manual

Model: 429357 | Finish: Summer Oak

INTRODUCTION

This manual provides detailed instructions for the assembly, operation, and maintenance of your Sauder Beginnings Desk. Please read all instructions carefully before beginning assembly and retain this manual for future reference.



Image: The Sauder Beginnings Desk, featuring a spacious top surface and integrated storage, presented in a Summer Oak finish.

SAFETY INFORMATION

Adherence to these safety guidelines is crucial for preventing injury and damage to the product.

- Always assemble this desk with two people to ensure stability.
- Use proper anchoring techniques to secure the desk to the wall or floor, if desired, to prevent tipping.
- Exercise caution when using the hidden storage behind the door to avoid finger trap injuries.
- Do not overload shelves or the desk surface beyond their intended capacity.

PACKAGE CONTENTS

Before beginning assembly, verify that all components are present and undamaged. If any parts are missing or damaged, please contact customer support.

- Desk panels (engineered wood)
- Hardware pack (screws, dowels, hinges, handle)
- Adjustable shelf pins

- Assembly instructions

Note: Assembly tools are not included. A hammer is recommended for assembly.

SETUP AND ASSEMBLY

Assembly is required for this product. It is recommended that two people perform the assembly to ensure stability and ease of construction.

1. **Unpack and Identify Parts:** Carefully remove all components from the packaging. Lay them out on a clean, soft surface to prevent scratches. Refer to the included parts list to identify each piece.
2. **Assemble Base Structure:** Follow the step-by-step diagrams in the separate assembly guide to connect the main side panels and back panel using the provided hardware. Ensure all connections are secure.
3. **Install Shelves:** Insert the adjustable shelf pins into the desired holes for the open shelving unit. Place the adjustable shelf onto the pins.
4. **Attach Door and Handle:** Secure the door to the designated cabinet area using the provided hinges. Attach the handle to the door.
5. **Final Checks:** Once assembled, gently lift and move the desk to its desired location. Ensure all screws are tightened and the desk is stable.

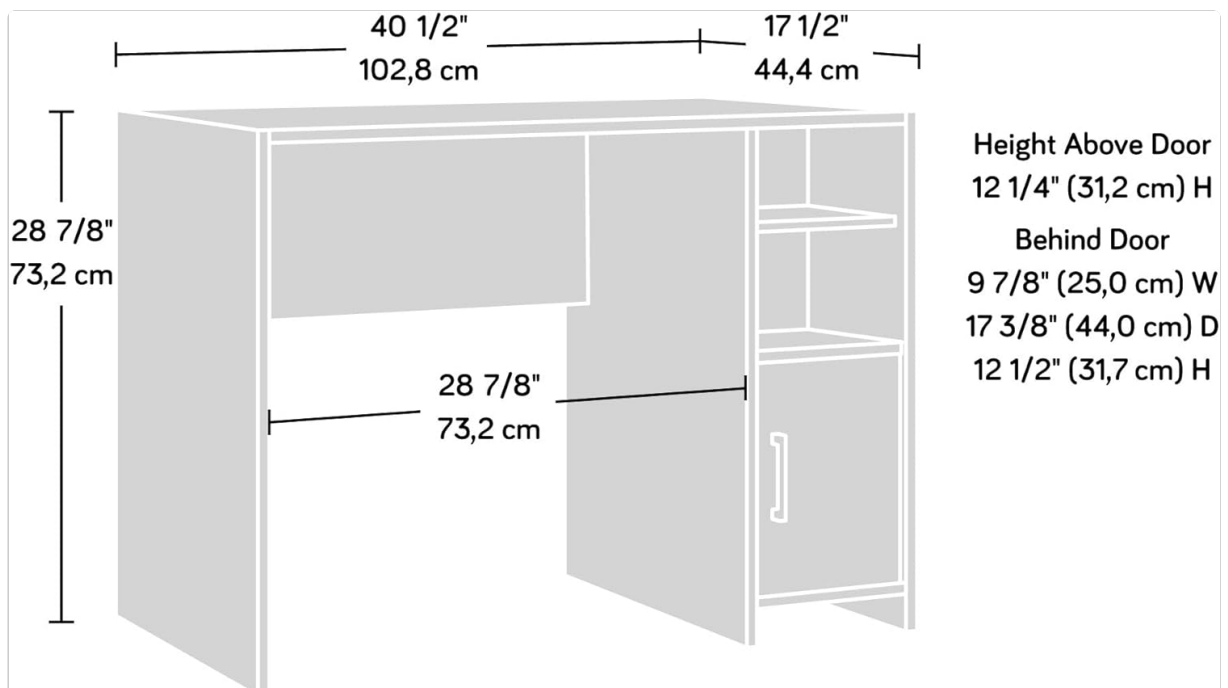


Image: An alternative view of the desk, highlighting its overall structure and the integration of storage compartments.



Image: The desk with its hidden storage compartment door open, illustrating the internal space for organization.



Image: A detailed view of the desk's open shelving, designed to accommodate various items like books or accessories.

OPERATING INSTRUCTIONS

The Sauder Beginnings Desk is designed for functional use in a home office environment.

- **Work Surface:** Utilize the spacious top surface for your laptop, monitor, and other essential work items.
- **Adjustable Shelf:** The open shelving unit includes one adjustable shelf. To change its height, remove the shelf, reposition the shelf pins to the desired level, and then place the shelf back onto the pins.
- **Hidden Storage:** The cabinet behind the door provides concealed storage for items you prefer to keep out of sight. Open the door using the handle to access this space.



Image: A close-up of the desk's work surface, demonstrating its capacity for a laptop and other small items, showcasing the Summer Oak finish.



Image: The interior of the hidden storage compartment, illustrating its capacity for various office supplies or personal items.

MAINTENANCE

Proper care will extend the life and appearance of your desk.

- **Cleaning:** Dust the desk regularly with a dry, soft cloth. For spills, immediately wipe with a damp cloth and then dry thoroughly. Avoid abrasive cleaners or harsh chemicals.
- **Protection:** Use coasters under beverages and protective pads under hot items to prevent damage to the surface.
- **Hardware:** Periodically check and tighten all screws and fasteners to maintain stability.

TROUBLESHOOTING

Problem	Possible Cause	Solution
Desk feels wobbly or unstable.	Loose fasteners; uneven floor.	Ensure all screws and dowels are fully tightened. Place shims under desk feet if the floor is uneven.

Problem	Possible Cause	Solution
Door does not close properly.	Misaligned hinges; obstruction.	Adjust hinge screws to realign the door. Check for any items blocking the door's path.
Missing or damaged parts upon arrival.	Shipping damage; packaging error.	Do not proceed with assembly. Contact Sauder customer support immediately for replacement parts.

SPECIFICATIONS

Feature	Detail
Brand	Sauder
Model Number	429357
Assembled Dimensions (L x W x H)	40.39" x 17.48" x 28.82" (102.6 cm x 44.4 cm x 73.2 cm)
Finish	Summer Oak
Material	Engineered Wood
Weight	49.72 Pounds (22.55 kg)
Storage	2 open shelves (1 adjustable), 1 hidden cabinet
Assembly Required	Yes (2 people recommended)
Recommended Tools	Hammer



Image: Dimensional drawing of the desk, detailing overall measurements and internal compartment sizes.

WARRANTY INFORMATION

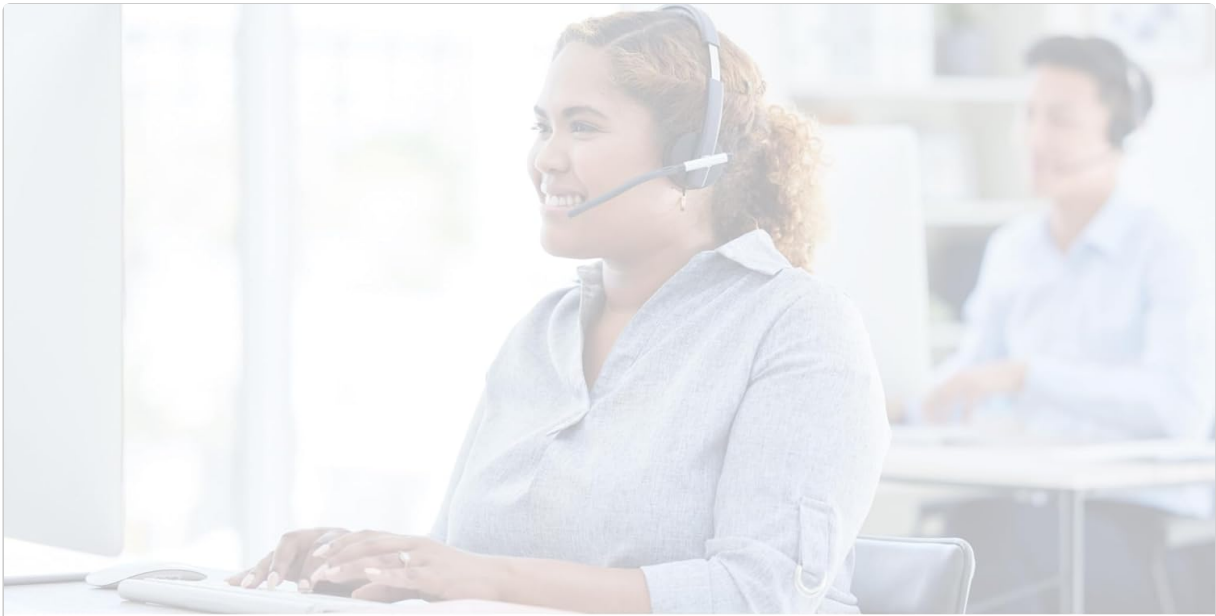
This Sauder Beginnings Desk comes with a **5-year limited warranty** covering parts. For specific details regarding warranty coverage and claims, please refer to the documentation included with your product or contact Sauder customer support.

CUSTOMER SUPPORT

For assistance with assembly, missing parts, or any other inquiries, please contact Sauder's domestic call center.

Website: [sauder.com/service](https://www.sauder.com/service)

Phone: 800-523-3987



DOMESTIC CALL CENTER
READY TO ASSIST.

sauder.com/service

800-523-3987

Image: Sauder Customer Support contact details for assistance.