



[Manuals.plus](#) /

> [Ohuhu](#) /

> Ohuhu GRB-06 Metal Raised Garden Bed Instruction Manual

## Ohuhu GRB-06

# Ohuhu GRB-06 Metal Raised Garden Bed Instruction Manual

Model: GRB-06

## 1. INTRODUCTION

---

Thank you for choosing the Ohuhu GRB-06 Metal Raised Garden Bed. This manual provides essential information for the safe assembly, proper use, and maintenance of your new garden bed. Please read these instructions carefully before beginning assembly and retain them for future reference.



*Image 1: Ohuhu Metal Raised Garden Bed in use.*

The Ohuhu GRB-06 is a durable, galvanized steel raised garden bed designed for growing vegetables, flowers, herbs, and succulents. Its robust construction and open-ended base promote healthy plant growth and efficient drainage.

## **2. SAFETY INFORMATION**

---

- Always wear protective gloves during assembly to prevent cuts from metal edges.
- Ensure all fasteners are securely tightened to maintain structural integrity.
- Choose a level and stable surface for placement to prevent tipping.
- Keep children and pets away from the assembly area.
- Do not climb on or lean heavily on the assembled garden bed.

## **3. PACKAGE CONTENTS**

---

Verify that all components are present before beginning assembly. If any parts are missing or damaged, please contact customer support.

# Product size



*Image 2: All components of the Ohuhu Metal Raised Garden Bed.*

- Galvanized Steel Side Panels
- Galvanized Steel Corner Panels
- Reinforcement Rods (if applicable to model)
- Fasteners (screws, nuts, washers)
- Assembly Gloves
- Instruction Manual

## 4. SETUP AND ASSEMBLY INSTRUCTIONS

Assembly is straightforward, but attention to detail is important. An electric screwdriver is recommended to improve installation efficiency.

1. **Unpack Components:** Carefully remove all parts from the packaging. Lay them out on a clean, flat surface.
2. **Wear Gloves:** Put on the provided assembly gloves to protect your hands from sharp edges.
3. **Assemble Side Panels:** Connect the galvanized steel side panels using the provided fasteners. Ensure the corrugated sections align correctly.

4. **Attach Corner Panels:** Secure the corner panels to the assembled side panels. These panels feature a protective design for enhanced safety and stability.

## Easy to Assemble

- Comes with gloves for convenient erecting
- Electric screwdriver is recommended to improve installation efficiency



Image 3: Easy assembly steps with gloves.

# Corner Protection Design



*Image 4: Detail of the corner protection design.*

5. **Install Reinforcement Rods (if included):** If your model includes reinforcement rods, attach them across the width of the bed as indicated in the diagram to prevent bowing when filled with soil.
6. **Tighten All Fasteners:** Double-check that all screws and nuts are securely tightened. Do not overtighten, as this may strip the threads.
7. **Position the Bed:** Carefully move the assembled garden bed to its desired location. Ensure the ground is level and firm.

## 5. OPERATING AND USAGE

The Ohuhu GRB-06 is designed for optimal plant health with its open-ended base and generous capacity.

### Filling the Garden Bed

- **Layering:** For best results and to reduce soil volume, consider layering organic materials at the bottom (e.g., cardboard, wood chips, leaves) before adding high-quality potting mix or garden soil.
- **Soil Type:** Use a well-draining soil mix suitable for the plants you intend to grow.
- **Capacity:** The bed has a capacity of approximately 31.86 cubic feet, requiring a significant amount of soil.

### Benefits of the Open-Ended Base

# OPEN-ENDED BASE

It is beneficial to dredge water, prevent moisture accumulation and maintain soil balance.



*Image 5: Open-ended base for drainage and root growth.*

The open-ended base design offers several advantages:

- **Improved Drainage:** Prevents water accumulation and root rot by allowing excess water to drain directly into the ground.
- **Soil Balance:** Helps maintain natural soil balance and allows beneficial organisms to move freely between the bed and the ground.
- **Root Growth:** Enables plant roots to extend deeper into the native soil, accessing more nutrients and moisture, especially during dry periods.

## Planting

This raised garden bed is suitable for a wide variety of plants, including vegetables, fruits, flowers, and herbs. Plan your planting layout to maximize space and sunlight exposure.

## 6. MAINTENANCE

The Ohuhu GRB-06 is constructed from rustproof and weather-resistant galvanized steel, ensuring long-lasting performance with minimal maintenance.

# Rustproof & Weather-Resistant Material

Thickened steel & safe for your plants

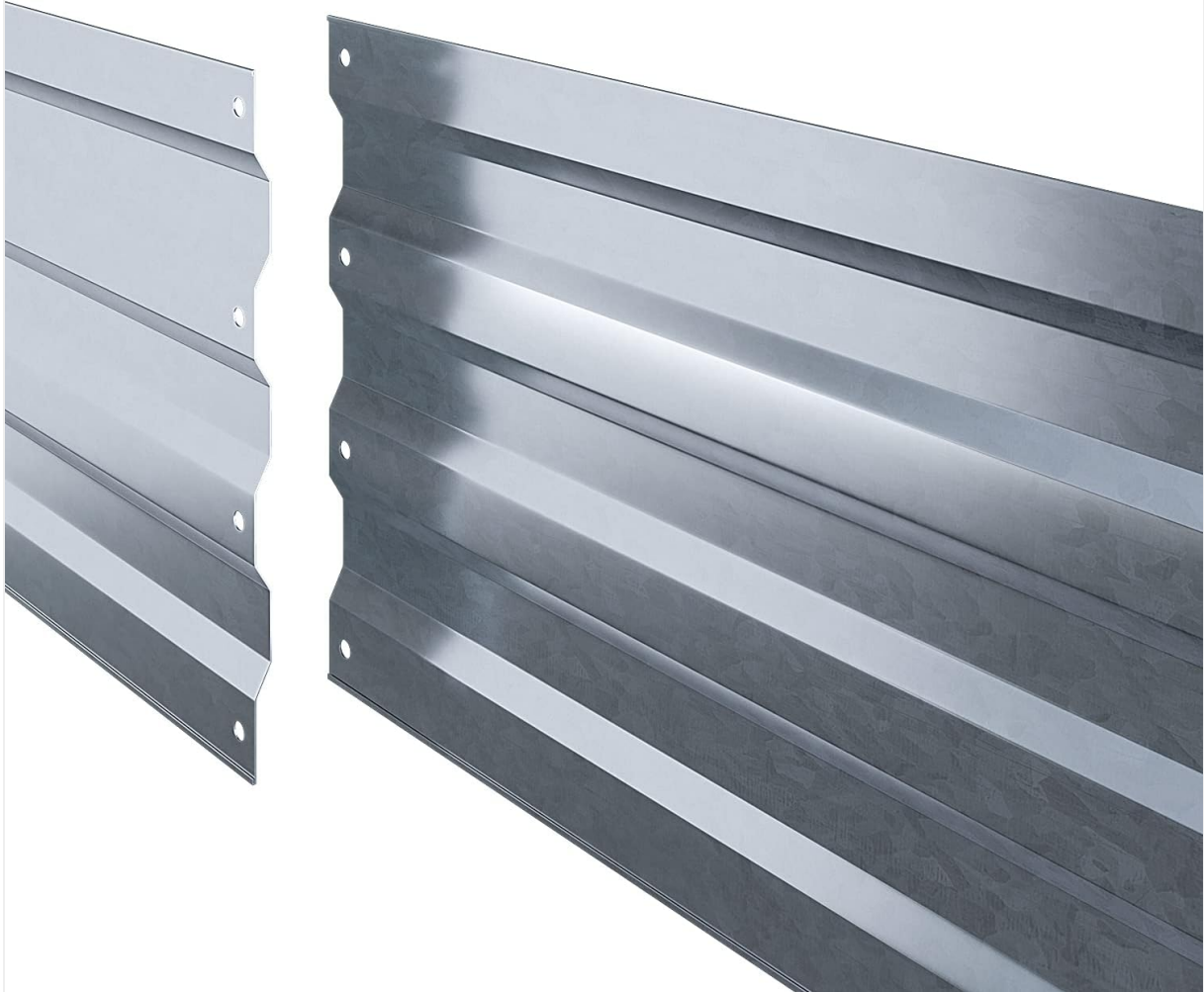


Image 6: Rustproof and weather-resistant material.

- **Cleaning:** Periodically wipe down the exterior surfaces with a damp cloth to remove dirt and debris. Avoid abrasive cleaners that could damage the galvanized coating.
- **Inspection:** Annually inspect all fasteners to ensure they remain tight. Re-tighten if necessary.
- **Winter Care:** In regions with harsh winters, consider covering the bed to protect the soil and extend the life of the structure, although the galvanized steel is designed to withstand various weather conditions.

## 7. TROUBLESHOOTING

- **Slight Bowing of Sides:** If slight bowing occurs after filling with soil, ensure reinforcement rods (if applicable) are correctly installed and tightened. This can also be mitigated by layering materials in the bed, which reduces the overall pressure on the sides.
- **Poor Drainage:** If water pools in the bed, ensure the open-ended base is directly on permeable ground. If placed on an impermeable surface, consider adding drainage holes or a layer of gravel beneath the soil.
- **Loose Fasteners:** If the bed feels unstable, check and tighten all screws and nuts.

## 8. SPECIFICATIONS

Model Number	GRB-06
--------------	--------

<b>Material</b>	Galvanized Steel
<b>Color</b>	Silver
<b>Item Dimensions (L x W x H)</b>	180 x 90 x 57 cm (approximately 6 x 3 x 1.9 ft)
<b>Capacity</b>	Approximately 31.86 Cubic Feet
<b>Special Features</b>	Rust Resistant, Heavy Duty, Open-Ended Base, Corner Protection Design
<b>Indoor/Outdoor Usage</b>	Outdoor

## 9. WARRANTY INFORMATION

---

Please refer to your purchase documentation or the official Ohuhu website for specific warranty details regarding your GRB-06 Metal Raised Garden Bed. Warranty terms typically cover manufacturing defects.

## 10. CUSTOMER SUPPORT

---

For any questions, concerns, or assistance with your Ohuhu GRB-06 Metal Raised Garden Bed, please contact Ohuhu customer service through your retailer or visit the official Ohuhu website for support resources.