

Manuals+

[Q & A](#) | [Deep Search](#) | [Upload](#)

manuals.plus /

- › [Stiebel Eltron](#) /
- › [Stiebel Eltron CK 200-2 Premium Heater User Manual](#)

Stiebel Eltron CK 200-2

Stiebel Eltron CK 200-2 Premium Heater User Manual

Model: CK 200-2 Premium (2 kW / 240V)

1. INTRODUCTION AND PRODUCT OVERVIEW



Figure 1.1: The Stiebel Eltron CK 200-2 Premium Heater.

The Stiebel Eltron CK 200-2 Premium Heater is an elegant surface-mount fan heater designed to provide quick and

efficient heating. It features an electronic digital control with an illuminated display, offering advanced functionalities such as programmable timers, a variable booster heating timer, open window detection for energy efficiency, and a child protection mode to lock controls. The heater also includes a self-learning program in timer mode to ensure the desired room temperature is reached precisely at the programmed time.

Engineered and manufactured in Germany, this unit operates quietly, with a normal operation noise level of 48 dB(A) and a "silent-mode" at a reduced power of 37 dB(A). Its frost-protection setting helps maintain above-freezing temperatures in appropriately sized spaces. The thick aluminum face remains cool to the touch, enhancing safety. The European downdraft design ensures even heat distribution, making it suitable for various applications including bathrooms, basements, offices, playrooms, and mobile homes.

Key Features:

- Surface-mounted design for straightforward installation without requiring a recess.
- Electronic digital control with illuminated display for easy temperature setting and programming.
- Programmable timer with 3 presets and booster heating function.
- Open window detection for improved energy efficiency.
- Child protection mode to prevent unintended adjustments.
- Quiet operation with a "silent-mode" for reduced noise.
- Thick aluminum face that remains cool to the touch.
- European downdraft design for even heat distribution.

2. SAFETY INFORMATION

Please read all safety instructions carefully before installing, operating, or performing maintenance on this heater. Failure to follow these instructions may result in electric shock, fire, property damage, or personal injury.

General Safety Precautions:

- This appliance is not intended for use by persons (including children) with reduced physical, sensory or mental capabilities, or lack of experience and knowledge, unless they have been given supervision or instruction concerning use of the appliance by a person responsible for their safety.
- Children should be supervised to ensure that they do not play with the appliance.
- Do not operate any heater with a damaged cord or plug or after the heater malfunctions, has been dropped or damaged in any manner.
- Do not use outdoors.
- Do not use in bathrooms, laundry areas, and similar indoor locations where water is present.
- Always disconnect power before servicing or cleaning.
- Keep combustible materials, such as furniture, pillows, bedding, papers, clothes, and curtains at least 3 feet (0.9 m) from the front of the heater and away from the sides and rear.

Electrical Safety:

- This heater is for use on 240 Volts. Ensure the electrical supply matches the heater's requirements.
- The heater must be connected to a dedicated circuit protected by a circuit breaker of appropriate amperage (8.3 Amps).
- All wiring must be performed by a qualified electrician and comply with all local and national electrical codes.
- Do not run cord under carpeting. Do not cover cord with throw rugs, runners, or similar coverings. Arrange cord away from traffic area and where it will not be tripped over.

- **WARNING:** This product can expose you to chemicals including lead, which is known to the State of California to cause cancer and birth defects or other reproductive harm. For more information go to www.P65Warnings.ca.gov.

3. PACKAGE CONTENTS

Before beginning installation, ensure all components are present and undamaged. If any parts are missing or damaged, do not proceed with installation and contact customer service.

- Stiebel Eltron CK 200-2 Premium Heater Unit
- Wall-mounting bracket
- Instruction Manual (this document)

4. INSTALLATION AND SETUP

The CK 200-2 Premium Heater is designed for surface-mounted wall installation. It is crucial to follow all electrical codes and safety guidelines during installation.

4.1 Choosing a Location:

- Install the heater on a flat, vertical wall surface.
- Ensure there is adequate clearance from combustible materials (minimum 3 feet from front, sides, and rear).
- Ideal for indoor use in bathrooms, home offices, basements, playrooms, and similar spaces.
- Avoid locations where the heater could be exposed to direct water spray or excessive humidity.



Figure 4.1.1: Example installation of the heater in a bathroom environment.

4.2 Mounting the Heater:

The heater comes with a wall-mounting bracket for secure installation. Refer to the detailed instructions provided in the separate installation guide for precise measurements and drilling requirements.



Figure 4.2.1: Rear view of the heater, illustrating the integrated wall-mounting bracket and ventilation grilles.

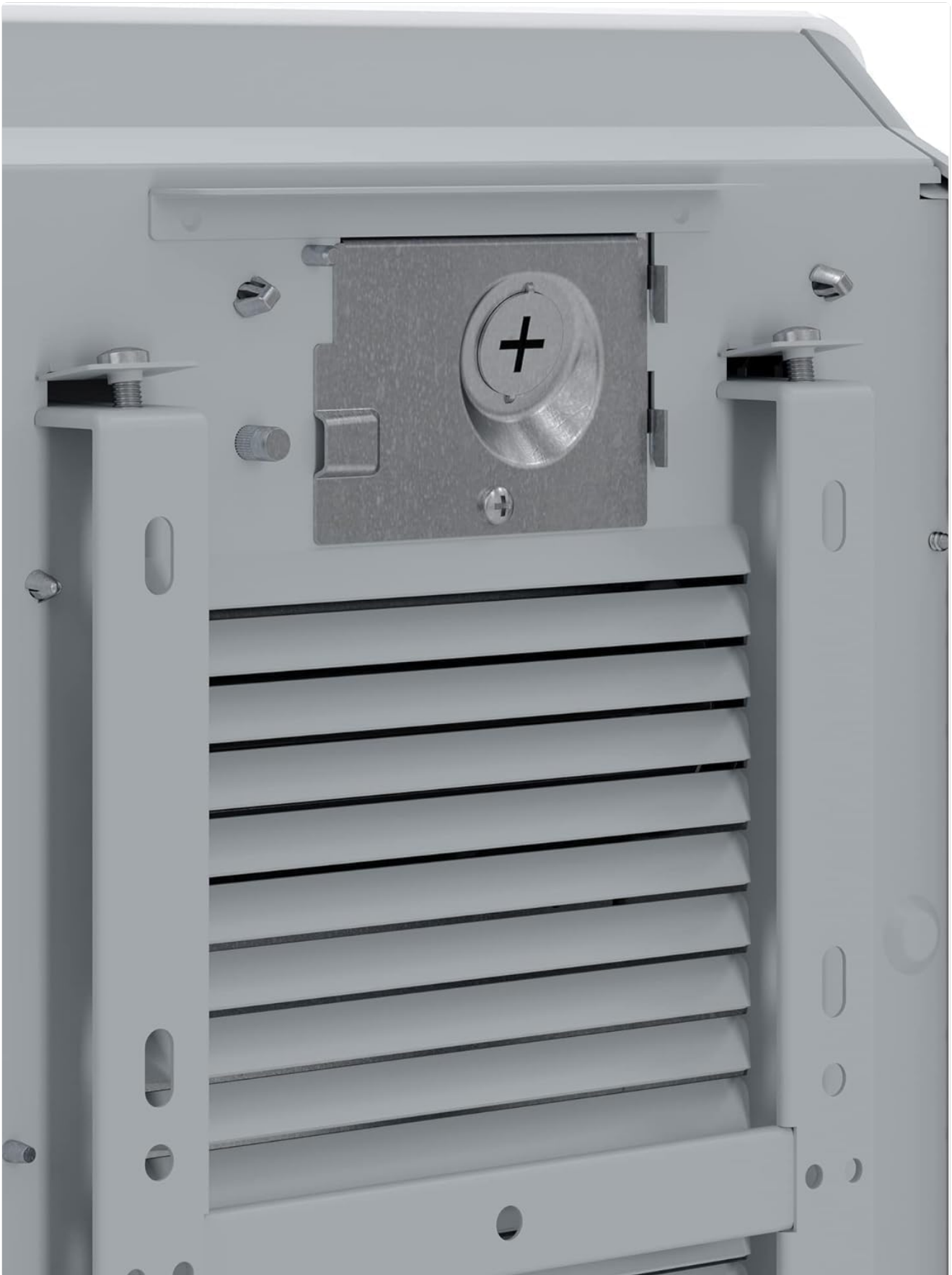


Figure 4.2.2: Detailed view of the mounting bracket, showing attachment points for secure wall installation.

4.3 Electrical Connection:

- Ensure the main power supply to the circuit is turned OFF at the breaker panel before making any electrical connections.
- This model requires a 240V electrical supply.

- Connect the heater directly to a dedicated circuit. Do not use extension cords or power strips.
- Consult a qualified electrician for all wiring to ensure compliance with local and national electrical codes.

5. OPERATION

The Stiebel Eltron CK 200-2 Premium Heater features an intuitive digital control panel for easy operation.

5.1 Control Panel Overview:



Figure 5.1.1: Digital control panel with illuminated display, showing temperature setting and control buttons.

- **Display:** Shows current temperature, mode indicators (timer, frost protection, silent mode), and other settings.
- **Temperature Adjustment Buttons (+/-):** Used to increase or decrease the desired room temperature.
- **Mode Button:** Cycles through different operating modes (e.g., Comfort, Timer, Frost Protection).
- **Timer Button:** Activates and sets programmable timers.

- **Check/Confirm Button:** Confirms selections and settings.
- **Power Button:** Turns the unit on or off.

5.2 Setting the Temperature:

Use the + and - buttons on the control panel to set your desired room temperature. The display will show the set temperature, and the heater will work to maintain it.

5.3 Programmable Timer:

The heater includes a programmable timer with 3 presets. This allows you to set specific times for the heater to turn on and off, or to adjust the temperature automatically. The self-learning program will pre-heat the room to reach the desired temperature at the programmed time.

- Press the **Timer** button to enter timer programming mode.
- Use the + and - buttons to adjust time and temperature settings for each preset.
- Press the **Check/Confirm** button to save your settings.

5.4 Booster Heating:

For rapid heating, activate the booster heating function. This can be set for up to 120 minutes, providing a temporary increase in heating output.

5.5 Open Window Detection:

The heater is equipped with an open window detection feature. If a sudden drop in temperature is detected (indicating an open window), the heater will temporarily reduce its output to save energy. Normal operation resumes once the window is closed and the temperature stabilizes.

5.6 Child Protection Mode:

To prevent accidental changes to settings, activate the child protection mode. Refer to the full manual for specific button combinations to engage and disengage this feature.

5.7 Silent Mode:

For reduced noise operation, the heater offers a "silent-mode" which operates at a lower power setting (37 dB(A)). This mode is ideal for bedrooms or quiet environments.

5.8 Frost Protection Setting:

The frost protection setting maintains a minimum temperature to prevent freezing in the room, ideal for unoccupied spaces during cold periods.

6. MAINTENANCE

Regular maintenance ensures the longevity and efficient operation of your Stiebel Eltron CK 200-2 Premium Heater.

6.1 Cleaning:

- Always disconnect the power supply to the heater before cleaning.
- Wipe the exterior surfaces with a soft, damp cloth. Do not use abrasive cleaners, solvents, or polishes.
- Ensure no water enters the internal components of the heater.
- Periodically vacuum the air intake and outlet grilles to remove dust and lint buildup.

6.2 Storage:

If storing the heater for an extended period, ensure it is clean and dry. Store it in a cool, dry place, preferably in its original packaging to protect it from dust and damage.

6.3 Service:

The Stiebel Eltron CK 200-2 Premium Heater contains no user-serviceable parts. Any repairs or internal maintenance should only be performed by qualified service personnel. Unauthorized attempts to repair the unit will void the warranty and may pose a safety hazard.

7. TROUBLESHOOTING

This section addresses common issues you might encounter with your heater. If the problem persists after attempting these solutions, please contact customer support.

| Problem | Possible Cause | Solution |
|---|---|--|
| Heater does not turn on. | No power supply; circuit breaker tripped; unit not properly plugged in (if applicable); power button not pressed. | Check power connection; reset circuit breaker; ensure unit is properly connected to power; press the power button. |
| Heater is on but not producing heat. | Temperature setting too low; open window detection activated; unit in silent mode or frost protection mode. | Increase desired temperature; close windows/doors; check operating mode and adjust as needed. |
| Fan is not working, but heating element is hot. | Partial power loss (e.g., one leg of a 240V supply); internal fan malfunction. | Immediately disconnect power to the unit. This indicates a serious electrical issue. Contact a qualified electrician to inspect your home's electrical system. Do not operate the heater until the electrical issue is resolved. |
| Difficulty programming the timer. | Incorrect button sequence; unfamiliarity with programming steps. | Refer to Section 5.3 "Programmable Timer" and the full instruction manual for detailed programming steps. If issues persist, contact customer support for assistance. |
| Heater makes unusual noises. | Dust buildup in fan; loose components; internal malfunction. | Disconnect power and clean fan area. If noise persists or is severe, discontinue use and contact customer service. |

8. SPECIFICATIONS

| Attribute | Detail |
|-----------|--------|
|-----------|--------|

| Attribute | Detail |
|--------------------------------|--|
| Brand | Stiebel Eltron |
| Model Number | CK 200-2 |
| Product Dimensions (D x W x H) | 4.9"D x 13.6"W x 18.5"H |
| Item Weight | 5.89 pounds |
| Color | White |
| Mounting Type | Wall Mount |
| Fuel Type | Electric |
| Voltage | 240 Volts |
| Amperage | 8.3 Amps |
| Max Temperature Setting | 194 Degrees Fahrenheit |
| Special Features | Digital Display, Noiseless (Quiet Operation) |
| Included Components | Heater, wall-mounting bracket |

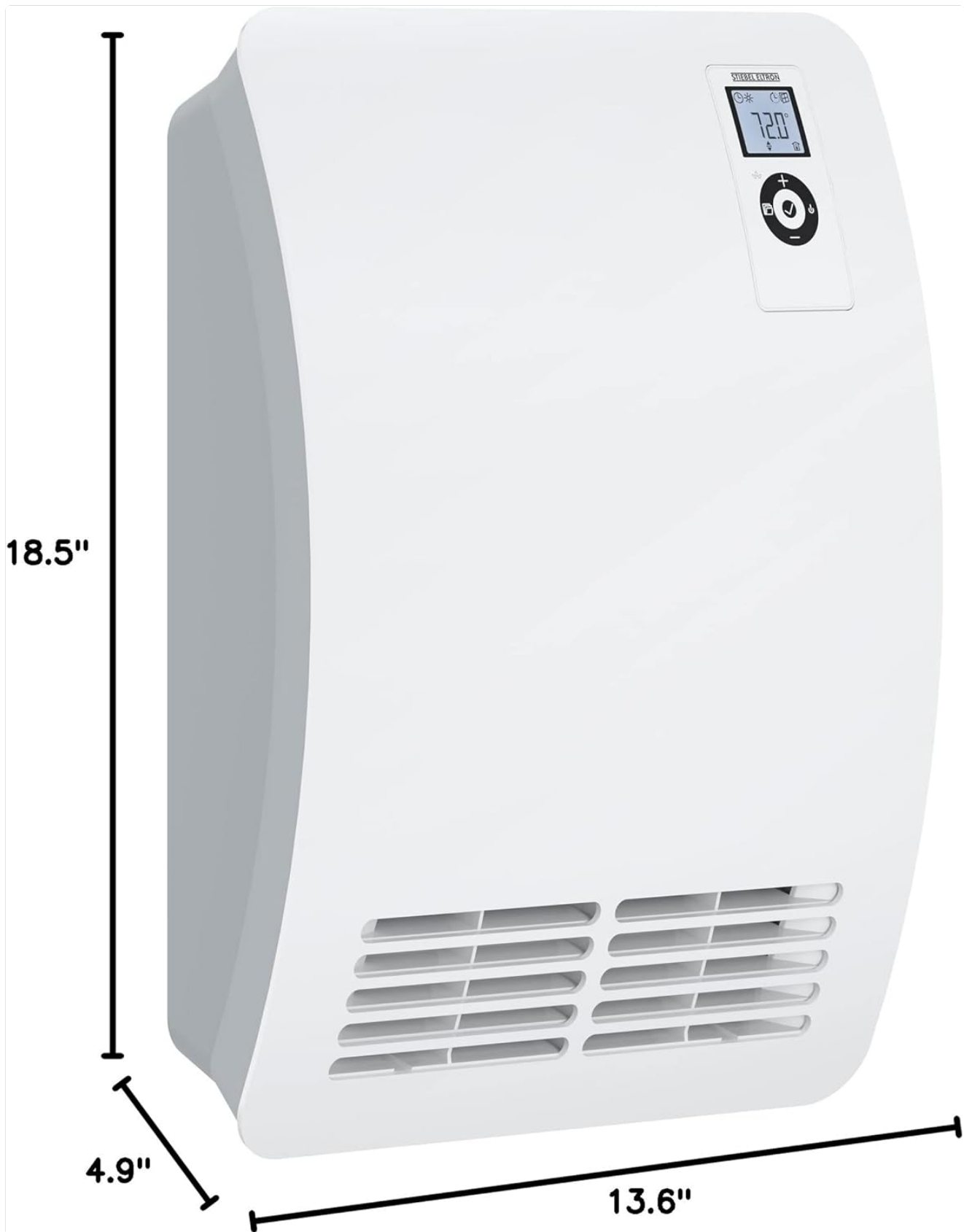


Figure 8.1: Product dimensions for the Stiebel Eltron CK 200-2 Premium Heater.

9. WARRANTY AND SUPPORT

9.1 Warranty Information:

The Stiebel Eltron CK 200-2 Premium Heater comes with a **3-year limited warranty**. This warranty covers defects in materials and workmanship under normal use. Please retain your proof of purchase for warranty claims. For full details regarding warranty terms and conditions, refer to the official warranty document included with your product or visit the Stiebel Eltron website.

9.2 Customer Support:

If you have any questions, require technical assistance, or need to report an issue with your heater, please contact Stiebel Eltron customer service. Contact information can typically be found on the manufacturer's website or on the product packaging. When contacting support, please have your model number (CK 200-2) and purchase date ready. You can also visit the official Stiebel Eltron store on Amazon for more product information and support resources: [Stiebel Eltron Amazon Store](#).