

[manuals.plus](#) /

› [Hatteker](#) /

› [Hatteker Mens Hair Clipper Beard Trimmer Cordless Precision Trimmer Waterproof Professional Hair Cutting Grooming Kit for Men USB Rechargeable LED Display 4 in 1 User Manual](#)

Hatteker rfc-691

Hatteker Mens Hair Clipper & Beard Trimmer User Manual

Model: rfc-691

Brand: Hatteker

1. INTRODUCTION

Thank you for choosing the Hatteker 4-in-1 Multi-Functional Hair Cutting Kit. This versatile grooming tool is designed for smooth, quick, and precise clipping performance on all types of hair, offering solutions for hair clipping, beard trimming, precision trimming, and body trimming. Please read this manual carefully before first use to ensure proper operation and maintenance.



Image: The Hatteker hair clipper and trimmer, showcasing its main unit, various interchangeable heads, guide combs, charging cable, cleaning brush, and comb.

2. PACKAGE CONTENTS

Please check the package contents to ensure all items are present:

- 1 x Hatteker Hair Clipper Main Unit
- 1 x Hair Clipper Head
- 1 x Beard Trimmer Head
- 1 x Precision Trimmer Head
- 1 x Body Trimmer Head
- 6 x Guide Combs (3mm, 4-6mm, 7-9mm, 10-12mm, 16-18mm, 22-24mm)
- 1 x Precision Dial (for U-blade trimmer head)
- 1 x USB Charging Cable
- 1 x Cleaning Brush
- 1 x Comb

- 1 x Charging Base (optional, if included in your specific kit)

3. PRODUCT FEATURES

- **4-in-1 Multi-Functional Design:** Includes Hair Clipper, Beard Trimmer, Precision Trimmer, and Body Trimmer heads for comprehensive grooming.
- **Adjustable Cutting Lengths:**
 - 6 Guide Combs: Provides lengths from 3mm to 24mm.
 - Precision Dial: Adjustable from 1mm to 10mm for the U-blade trimmer head.
 - 4-Degree Tunable Blade: Fine adjustment from 0.5mm to 2.0mm on the main unit.
- **High Capacity Battery:** Offers up to 120 minutes of cordless running time after a 1.5-hour full charge.
- **LED Display:** Clearly shows battery life, travel lock status, and low battery indicator.
- **USB Rechargeable:** Convenient charging via any USB interface, ideal for travel.
- **100% Waterproof:** Fully washable design for easy cleaning and hygiene.
- **Skin-Friendly Blades:** Special blade shape designed to prevent skin injuries.



Replaceable
Cutter head



4 Precise length
Setting adjustment



LED Display



Whole Body
Washable



Switch Button



Precision Dial

Image: A detailed view of the Hattaker hair clipper highlighting its key features such as the replaceable cutter head, precise length adjustment, LED display, washable body, power button, and precision dial.



Image: A close-up of the clipper's LED display, illustrating the battery percentage, travel lock icon, and low battery warning symbol.

4. SETUP

4.1 Initial Charging

Before first use, fully charge the device. The LED display will show the battery percentage. A full charge takes approximately 1.5 hours.

- Connect the USB charging cable to the charging port on the bottom of the clipper.
- Plug the other end of the USB cable into a USB power adapter (not included), a computer USB port, or the charging base (if applicable).
- The LED display will illuminate and show the charging progress.
- Once fully charged (100% displayed), disconnect the charger.



Image: The Hattaker hair clipper connected to a USB cable, demonstrating various charging methods including a wall adapter, power bank, and laptop, along with the charging base option.

4.2 Attaching/Detaching Cutter Heads

The device comes with multiple interchangeable cutter heads.

- To attach: Align the desired cutter head with the main unit and press firmly until it clicks into place.
- To detach: Gently push the cutter head upwards from the front while holding the main unit firmly.

4.3 Attaching Guide Combs

Select the appropriate guide comb for your desired hair length.

- Ensure the clipper is turned off.
- Slide the guide comb onto the cutter head until it securely locks into position.
- To remove, gently pull the comb away from the cutter head.

5. OPERATING INSTRUCTIONS

5.1 Power On/Off

Press the power button once to turn the device on. Press it again to turn it off.

5.2 Adjusting Cutting Length

The device offers multiple ways to adjust cutting length:

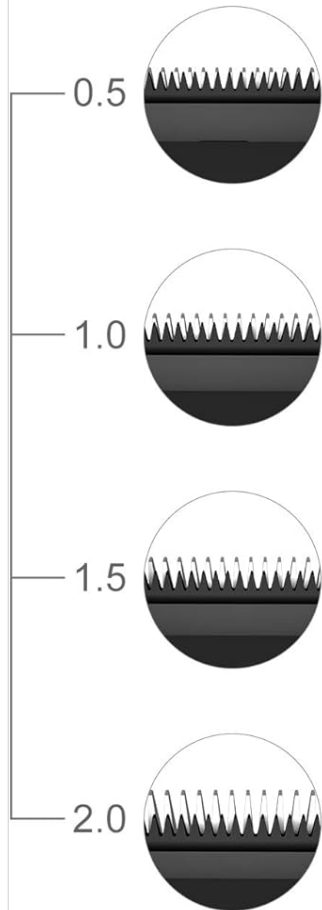
- **Guide Combs:** Use the provided 6 guide combs (3mm, 4-6mm, 7-9mm, 10-12mm, 16-18mm, 22-24mm) with the Hair Clipper head for various hair lengths.
- **Precision Dial:** For the Precision Trimmer (U-blade) head, use the integrated precision dial to adjust lengths from 1mm to 10mm. Rotate the dial to select the desired length.
- **Tunable Blade:** The main unit features a 4-degree tunable blade, allowing fine adjustments from 0.5mm to 2.0mm. This is typically adjusted via a lever on the side of the clipper.

Different Adjustable Combs Meet the Various Needs



Image: An illustration demonstrating the use of various guide combs with the full-size trimmer and the precision dial with the precision trimmer for different hair and beard lengths.

4-Degree Tunable Blade From 0.5mm To 2.0mm



6 Guide Combs



3mm



4-6mm



7-9mm



10-12mm



16-18mm



22-24mm

Image: The hair clipper displaying its 4-degree tunable blade settings (0.5mm, 1.0mm, 1.5mm, 2.0mm) and the six different guide combs.

5.3 Using Different Trimmer Heads

Select the appropriate head for your grooming needs:

- **Hair Clipper Head:** Ideal for general hair cutting and styling. Use with guide combs for desired length.
- **Beard Trimmer Head:** Perfect for shaping and maintaining beards and stubble.
- **Precision Trimmer Head:** For detailed styling, sharp lines, and intricate designs. Use with the precision dial for fine length control.
- **Body Trimmer Head:** Designed for safe and comfortable body hair grooming.

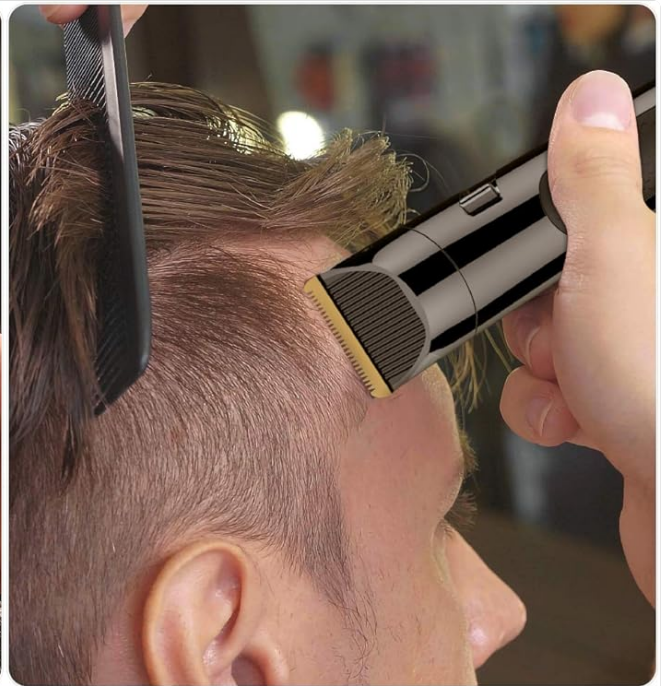


Image: A collage demonstrating the versatility of the Hatteker clipper, showing it in use for trimming a beard, cutting hair, and creating intricate hair designs.



Image: A display of the four interchangeable heads included with the Hattaker clipper: the standard hair clipper head, beard trimmer head, precision trimmer head, and body trimmer head.

5.4 Travel Lock Function

To prevent accidental activation during travel, the device features a travel lock.

- To activate: Press and hold the power button for 3 seconds until the lock icon appears on the LED display.
- To deactivate: Press and hold the power button for 3 seconds again until the lock icon disappears.

6. MAINTENANCE AND CLEANING

Regular cleaning ensures optimal performance and extends the lifespan of your trimmer.

- **After Each Use:**
 - Turn off the device.
 - Remove the cutter head.
 - Use the cleaning brush to remove any loose hairs from the cutter head and the main unit.
 - Rinse the cutter head and the main unit under running water. The device is 100% waterproof.
 - Allow all parts to air dry completely before reattaching the head or storing the device.
- **Lubrication:** Periodically apply a small drop of clipper oil (not included, but commonly available) to the blades to

maintain smooth operation.

- **Storage:** Store the device in a cool, dry place, away from direct sunlight and out of reach of children.



Image: The Hattaker hair clipper being cleaned under a running faucet, illustrating its fully washable design.

7. CHARGING AND BATTERY INFORMATION

- **Battery Type:** Lithium-ion battery.
- **Charging Time:** Approximately 1.5 hours for a full charge.
- **Operating Time:** Up to 120 minutes of cordless use on a full charge.
- **Charging Indicator:** The LED display shows the current battery percentage during charging and use.
- **Low Battery Indicator:** A low battery symbol will appear on the LED display when the battery is running low, indicating it's time to recharge.
- **Charging Methods:** Can be charged directly via the USB cable or by placing it in the charging base (if included) connected to the USB cable.

8. TROUBLESHOOTING

Problem	Possible Cause	Solution
Device does not turn on.	Battery is depleted. Travel lock is activated.	Charge the device fully. Deactivate travel lock by pressing and holding the power button for 3 seconds.
Poor cutting performance.	Blades are dirty or clogged with hair. Blades are not lubricated. Battery is low.	Clean the blades and cutter head thoroughly. Apply a small amount of clipper oil to the blades. Recharge the device.
Device does not charge.	Charging cable or adapter is faulty. Charging port is dirty.	Try a different USB cable or power adapter. Ensure the charging port is clean and free of debris.
Cutter head falls off easily.	Cutter head not properly attached.	Ensure the cutter head is aligned and pressed firmly until it clicks into place.

9. SPECIFICATIONS

- **Model:** rfc-691
- **Power Source:** Battery Powered, Corded Electric (via USB)
- **Battery Type:** Lithium-ion
- **Charging Time:** Approx. 1.5 hours
- **Operating Time:** Up to 120 minutes
- **Waterproof Rating:** 100% Washable
- **Included Components:** Hair Clipper Main Unit, various cutter heads, guide combs, USB charging cable, cleaning brush, comb.
- **Dimensions:** 11.02 x 9.72 x 3.39 inches (Package)
- **Weight:** 1.63 Pounds (Package)

10. WARRANTY AND SUPPORT

For warranty information or technical support, please refer to the product packaging or contact Hatteker customer service directly. Keep your purchase receipt as proof of purchase.

For further assistance, please visit the official Hatteker website or contact their customer support channels.