

[Manuals.plus](#) /

> [ABSOSO](#) /

> ABSOSO Double Din Car Stereo Carplay (Model CA71BTC) Instruction Manual

ABSOSO CA71BTC

ABSOSO Double Din Car Stereo Carplay (Model CA71BTC) Instruction Manual

Your comprehensive guide to installation, operation, and features.

1. INTRODUCTION

Thank you for choosing the ABSOSO Double Din Car Stereo Carplay. This manual provides essential information for the safe and efficient use of your new car stereo. Please read it thoroughly before installation and operation, and keep it for future reference.

2. SAFETY INFORMATION

To ensure safe operation and prevent damage, observe the following precautions:

- Do not operate the system in a way that distracts you from driving. Always prioritize road safety.
- Ensure all wiring is correctly connected to prevent short circuits or electrical damage.
- Consult a professional for installation if you are unsure about any steps.
- Avoid exposing the unit to extreme temperatures, direct sunlight for prolonged periods, or excessive moisture.
- Do not attempt to disassemble or modify the unit. This may void the warranty and cause damage.

3. WHAT'S INCLUDED

Verify that all items are present in the package:

- Double Din Car Stereo Unit
- Backup Camera & Backup Camera Cable
- Harness & Mounting Kits
- IR Remote & Steering Wheel Control Remote
- Microphone
- User Manual

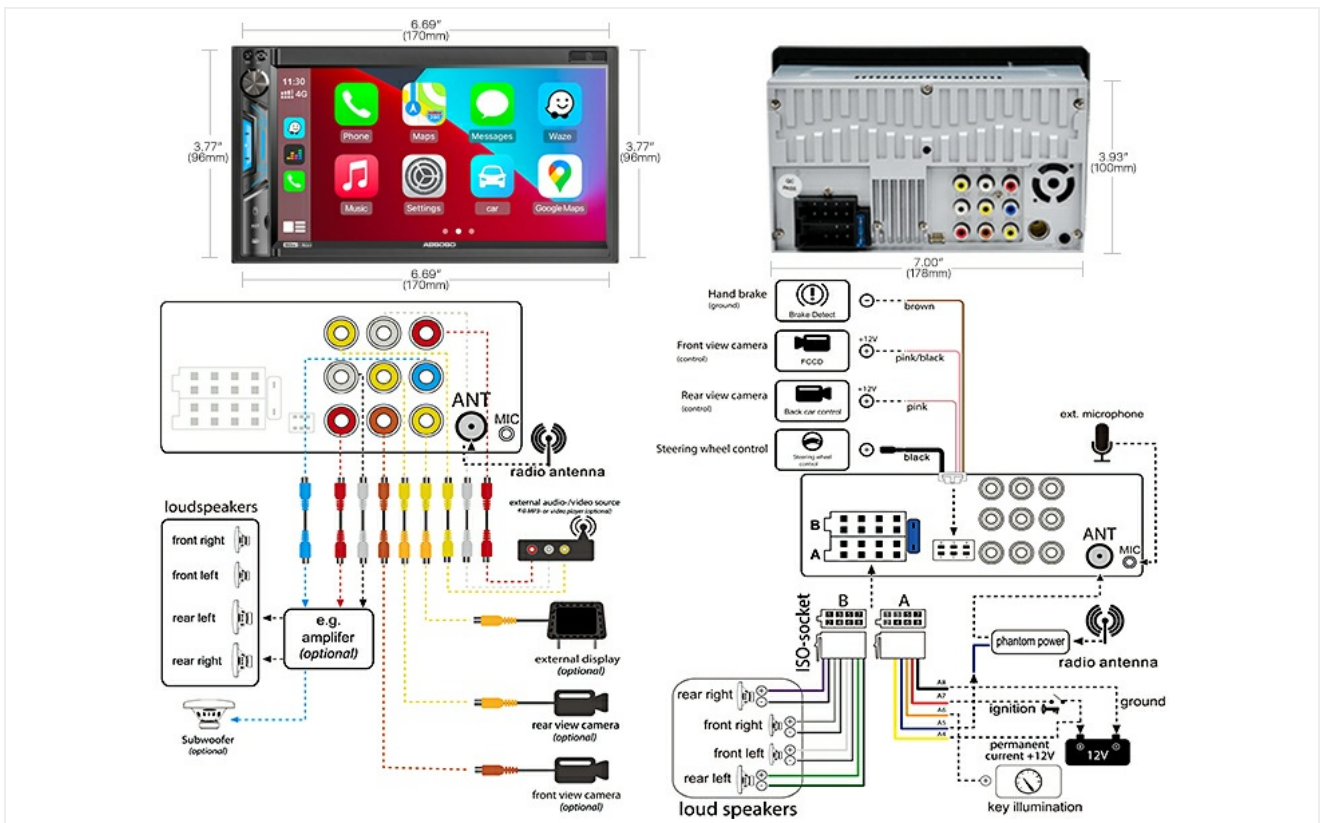


Image 4.1: Comprehensive wiring diagram for the head unit, including power, speakers, and external connections.

4.2. Physical Installation

1. Remove the existing car stereo from your vehicle's dashboard.
2. Connect the wiring harness from the vehicle to the stereo's harness, following the wiring diagram.
3. Secure the stereo into the double DIN slot using the provided mounting brackets and screws.
4. Carefully reassemble the dashboard components.

4.3. Backup Camera Installation

Connect the backup camera cable to the designated input on the stereo. Ensure the camera's power wire is connected to your vehicle's reverse light circuit so it activates automatically when shifting into reverse.



Image 4.2: Illustration of connecting the backup camera to the car stereo system.

4.4. Steering Wheel Control Setup

The unit supports existing steering wheel controls. Connect the steering wheel control wires according to the wiring diagram. Access the steering wheel control learning function in the system settings to program the buttons.

SD/USB/AUX-input



USB Fast Charging

Designed with 1.5A USB for charging your phone while driving.



Image 4.3: The steering wheel control learning interface on the car stereo display.

5. OPERATING INSTRUCTIONS

5.1. Basic Operation

- **Power On/Off:** Press the power button (usually a knob) to turn the unit on or off.
- **Volume Control:** Rotate the volume knob or use the on-screen controls to adjust the audio level.
- **Main Menu:** Tap the 'Home' icon on the touchscreen to return to the main application menu.



Image 5.1: The main menu interface of the car stereo, showing various application icons.

5.2. Apple CarPlay

Connect your iPhone to the stereo via a USB cable to activate Apple CarPlay. This allows you to access iPhone apps like messages, calls, music, and navigation (Google Maps, Waze) directly from the stereo's touchscreen. You can also use Siri voice control for hands-free operation.

HD Reverse Camera with Night Vision

170°
170° Wide Angle

E3
Guidelines

Night Vision

Waterproof

HD
1080p FHD

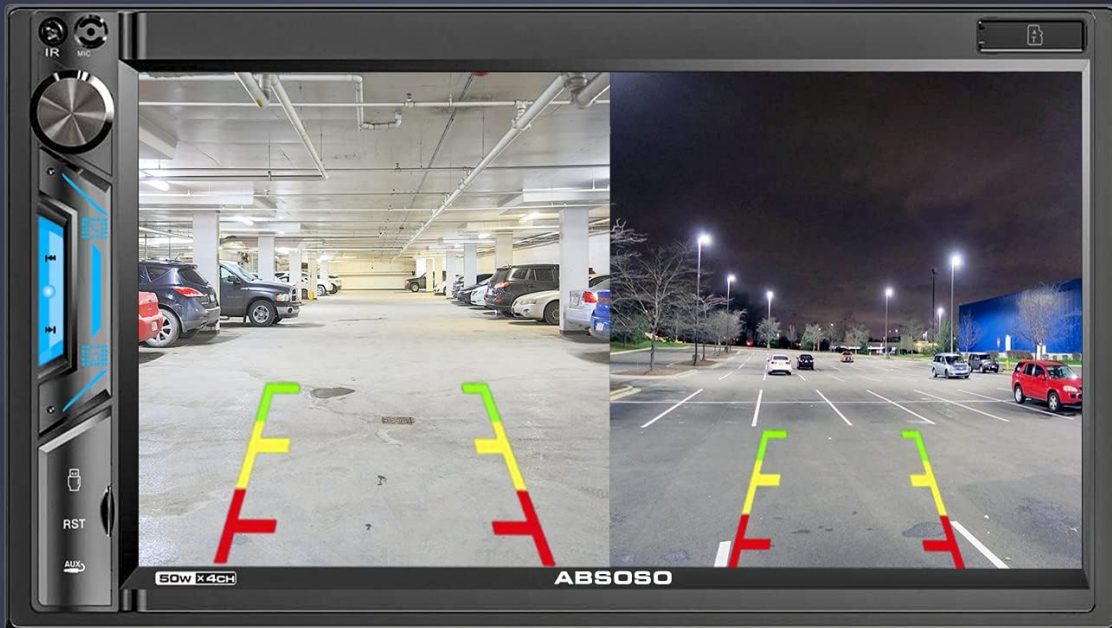


Image 5.2: Apple CarPlay displaying navigation and music playback on the stereo screen.

5.3. Bluetooth Connectivity

Pair your smartphone via Bluetooth for hands-free calling and audio streaming. The unit features a dual microphone system (built-in and external) for clear voice transmission during calls.

1. Enable Bluetooth on your smartphone and the car stereo.
2. Search for available devices on your phone and select the stereo (e.g., "ABSOSO Car Stereo").
3. Confirm the pairing code if prompted.



Image 5.3: Bluetooth interface showing an active phone call on the car stereo.

5.4. Phone Link (Mirror Link)

The Phone Link feature allows you to mirror your smartphone's screen onto the stereo display. This is compatible with Android phones (Android 11 or lower) and iPhones (iPhone XR, iPhone 8 Plus or lower version) via USB connection.



Image 5.4: The Phone Link feature mirroring a smartphone's navigation app onto the car stereo screen.

5.5. AM/FM Radio

Access the Radio application to tune into AM or FM stations. Use the touchscreen controls to scan for stations, save presets, and switch between bands.



Image 5.5: The radio interface showing frequency tuning and preset options.

5.6. Media Playback (USB/SD/AUX)

Play audio and video files from USB drives, SD cards, or external devices connected via the AUX input. The unit supports 1920x1080P video playback.



Image 5.6: The front panel of the stereo highlighting the SD card slot, USB port, and AUX input.

5.7. USB Fast Charging

The USB port provides 1.5A fast charging for your smartphone while driving.

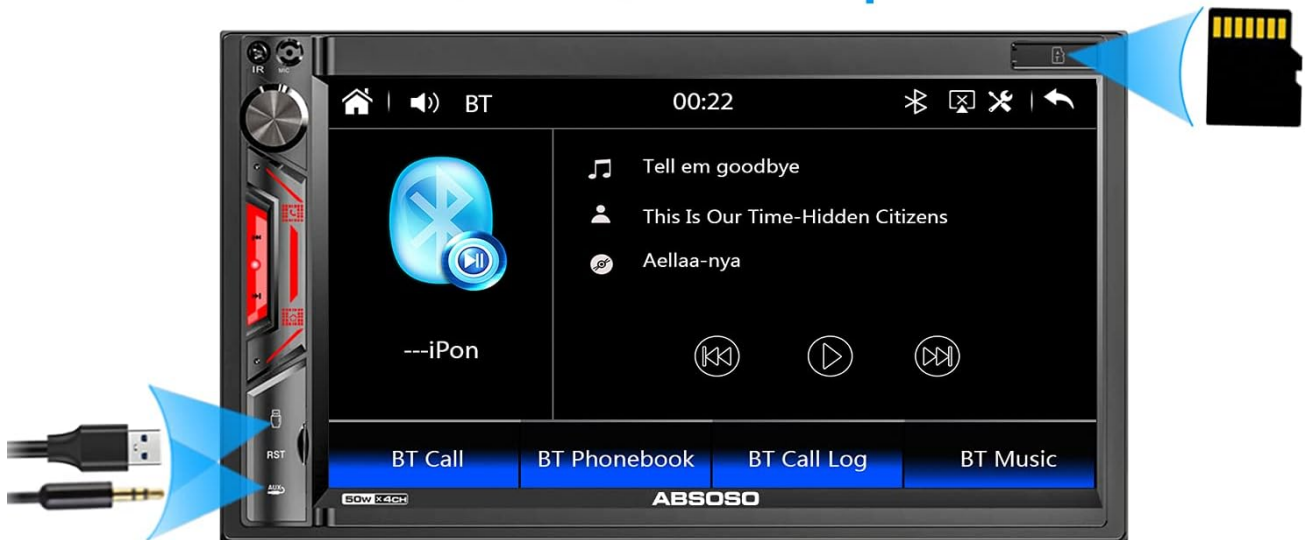


Image 5.7: A smartphone connected to the car stereo's USB port, indicating charging.

5.8. Backup Camera Display

When the vehicle is shifted into reverse, the stereo automatically displays the feed from the connected backup camera, providing a 170-degree wide-angle view with night vision capabilities.

SD/USB/AUX-input



USB Fast Charging

Designed with 1.5A USB for charging your phone while driving.



Image 5.8: The car stereo displaying the rear view from the backup camera, including parking guidelines.

6. MAINTENANCE

- **Cleaning the Screen:** Use a soft, lint-free cloth to gently wipe the touchscreen. Do not use abrasive cleaners or solvents.
- **General Cleaning:** Keep the unit free from dust and debris. Use a soft, dry cloth for cleaning.
- **Software Updates:** Check the manufacturer's website periodically for any available software updates to ensure optimal performance.

7. TROUBLESHOOTING

Problem	Possible Cause	Solution
No power	Incorrect wiring; Blown fuse; Loose connection	Check power and ground wires; Inspect vehicle's fuse box; Ensure all connections are secure.
No sound	Speaker wires disconnected; Volume too low; Mute activated	Check speaker wiring; Increase volume; Deactivate mute function.
Bluetooth not connecting	Bluetooth not enabled; Device not in pairing mode; Interference	Ensure Bluetooth is on for both devices; Put stereo in pairing mode; Move closer to the unit.
Backup camera not displaying	Camera not powered; Video cable loose; Reverse trigger wire not connected	Check camera power supply; Secure video cable; Ensure reverse trigger wire is connected to reverse light.
Steering wheel controls not working	Wiring issue; Not programmed	Verify steering wheel control wiring; Perform steering wheel control learning in settings.

8. SPECIFICATIONS

Feature	Detail
Brand	ABSOSO
Model Number	CA71BTC
Connectivity Technology	Bluetooth, USB
Compatible Devices	Smartphone, Speaker
Special Features	Equalizer, Touchscreen, Spotify (via Carplay/Mirrorlink)
Audio Output Type	Stereo, Speakers
Power Output	200 Watts (Max)
Number of Channels	4

Feature	Detail
Wireless Technology	AM/FM
Screen Size	7 Inch Capacitive Touchscreen
Screen Resolution	1024 x 600
Video Playback	1920 x 1080P
USB Charging	1.5A Fast Charging
Backup Camera	HD Night Vision, 170° Wide Angle, Waterproof
CarPlay Compatibility	Wired Apple CarPlay
Mirror Link Compatibility	Android 11 or lower, iPhone XR/8 Plus or lower

9. WARRANTY AND SUPPORT

9.1. Warranty Information

This product comes with a standard manufacturer's warranty. Please refer to the warranty card included in your package for specific terms and conditions, including the duration and coverage details. Keep your purchase receipt as proof of purchase for warranty claims.

9.2. Customer Support

For technical assistance, troubleshooting not covered in this manual, or warranty inquiries, please contact ABSOSO customer support through the retailer where you purchased the product or visit the official ABSOSO website for contact information.