

WINFLIKE AKB36086204

WINFLIKE AKB36086204 Replacement Remote Control User Manual

For LG Mini HiFi Audio Systems

INTRODUCTION

This manual provides instructions for the WINFLIKE AKB36086204 Replacement Remote Control, designed for use with various LG Mini HiFi Audio Systems. This remote offers a direct replacement solution without requiring complex setup.

Compatible LG Mini HiFi Audio System Models:

- MCD23U
- MCD23
- MCD23-D0U
- MCS23F
- AKB36086201
- AKB36086202
- AKB36086203
- AKB36086206

SETUP

Battery Installation

The AKB36086204 remote control requires two (2) AAA alkaline batteries (not included) for operation. Follow these steps to install the batteries:

1. Locate the battery compartment cover on the back of the remote control.
2. Press down on the tab and slide the cover off in the direction of the arrow.
3. Insert two new AAA alkaline batteries, ensuring the positive (+) and negative (-) terminals align correctly with the markings inside the compartment.
4. Slide the battery compartment cover back into place until it clicks securely.

Once batteries are installed, the remote is ready for use. No additional programming is required.



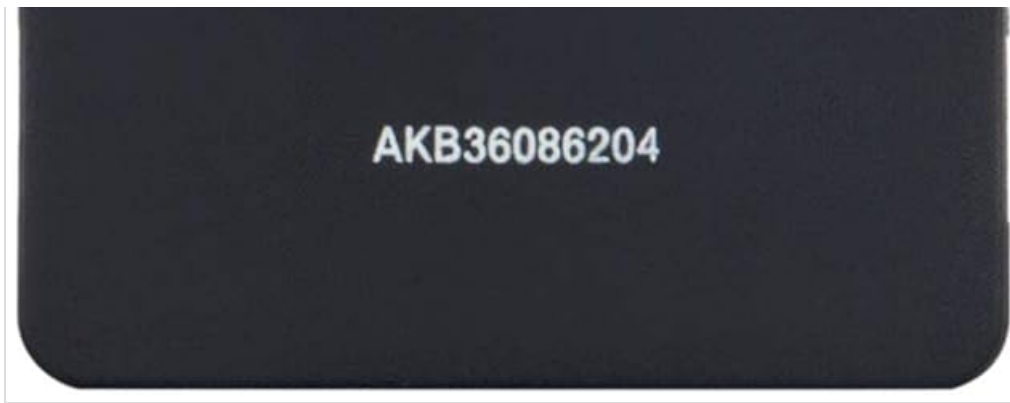


Image: Front view of the AKB36086204 remote control, showing all buttons and layout.

OPERATING INSTRUCTIONS

This remote control provides full access to all functions of your compatible LG Mini HiFi Audio System. Point the remote directly at the audio system's infrared receiver for optimal performance.

Button Functions

- **POWER (Red Button):** Turns the audio system on or off.
- **EQ:** Adjusts equalizer settings.
- **VSM:** Activates or deactivates Virtual Sound Matrix.
- **MUTE:** Mutes or unmutes the audio output.
- **PRESET/FOLDER:** Navigates through radio presets or folders on compatible media.
- **FUNCTION:** Selects different functions or input modes (e.g., CD, USB, Radio, Aux).
- **INPUT:** Selects the audio input source.
- **VOLUME (+/-):** Increases or decreases the audio volume.
- **SLEEP:** Sets the sleep timer.
- **INFO:** Displays information about the current track or system status.
- **TUN.- / TUN.+:** Tunes radio frequencies down or up.
- **MODE:** Changes playback mode (e.g., repeat, shuffle).
- **Navigation Buttons (Up/Down/Left/Right):** Navigates menus and selections.
- **Center Button (Play/Pause/OK):** Confirms selections or controls playback.
- **Skip/Search Buttons (< / >):** Skips tracks or fast forwards/rewinds.
- **PROGRAM/MEMO:** Programs radio stations or creates playlists.
- **REC (Red Button):** Initiates recording on compatible systems.



AKB36086204

Image: Angled view of the AKB36086204 remote control, showcasing its button layout and ergonomic shape.

MAINTENANCE

Cleaning

To clean the remote control, use a soft, dry cloth. Do not use liquid cleaners, abrasive pads, or chemical solvents, as these may damage the surface or internal components.

Battery Replacement

Replace batteries when the remote's response becomes inconsistent or stops working. Always replace both batteries at the same time with new AAA alkaline batteries. Do not mix old and new batteries, or different types of batteries.

Storage

Store the remote control in a cool, dry place away from direct sunlight and extreme temperatures. If the remote will not be used for an extended period, remove the batteries to prevent leakage.

TROUBLESHOOTING

- **Remote not responding:**

- Ensure batteries are correctly installed with proper polarity (+/-).
- Replace old batteries with new AAA alkaline batteries.
- Check for any obstructions between the remote control and the audio system's infrared receiver.
- Ensure you are within the maximum operating range (approximately 33 feet) and pointing the remote directly at the system.

- **Specific buttons not working:**

- Verify that the remote is compatible with your specific LG Mini HiFi Audio System model.
- Clean the remote's surface and buttons to ensure no debris is interfering with button presses.

If you continue to experience issues after following these troubleshooting steps, please refer to the Support section.

SPECIFICATIONS

Brand	WINFLIKE
Model Name	AKB36086204
Special Features	Ergonomic, Lightweight, No Programming Required
Color	Black
Compatible Devices	LG Mini HiFi Audio Systems (MCD23U, MCD23, MCD23-D0U, MCS23F, AKB36086201, AKB36086202, AKB36086203, AKB36086206)
Connectivity Technology	Infrared (IR)
Button Quantity	24
Maximum Range	33 Feet (10 meters)

Number of Batteries Required	2
Battery Type	AAA Alkaline
Item Weight	3 Ounces (approx. 85 grams)
Item Dimensions (L x W x H)	5" x 1" x 0.5" (approx. 12.7cm x 2.5cm x 1.3cm)

SUPPORT

For any questions, concerns, or issues regarding your WINFLIKE AKB36086204 Replacement Remote Control, please contact our customer support. We are committed to providing assistance and ensuring your satisfaction. *Contact information is typically provided by the seller or manufacturer at the point of purchase or on their official website.*