

MiraScreen D7

# MiraScreen D7 5G Wireless Display Dongle User Manual

Model: D7 | Brand: MiraScreen

## 1. INTRODUCTION

The MiraScreen D7 is a 5G wireless display dongle designed to mirror content from your iOS, Android, or Windows devices to a larger screen such as a TV, projector, or car display. It supports 1080P HD resolution and various wireless display protocols including DLNA, AirPlay, and Miracast, providing a versatile solution for screen sharing.



Image 1: MiraScreen D7 Wireless Display Dongle. This image shows the compact, rectangular design of the MiraScreen D7 dongle with an HDMI connector on one end.

## 2. PRODUCT FEATURES

---

- **Dual-Band 5G WiFi:** Supports 2.4G and 5G dual-band WiFi for a smoother, more stable wireless display experience, especially beneficial for gaming and high-definition content.

## 1080P HD Picture

3D shocking stereo vision, H.265 decoding, full HD and smooth operation



Image 2: 5G WiFi Performance Comparison. This image illustrates the difference in loading speed and clarity between 2.4G WiFi (showing 50% loading) and 5G WiFi (showing a clear image), highlighting the performance benefits of 5G.

- **1080P HD Resolution:** Delivers full HD 1920x1080 pixel video output with H.265 decoding for clear and smooth visuals.

## Simpler connection

Stable signal without delay, which solves the problem while wireless mirroring.

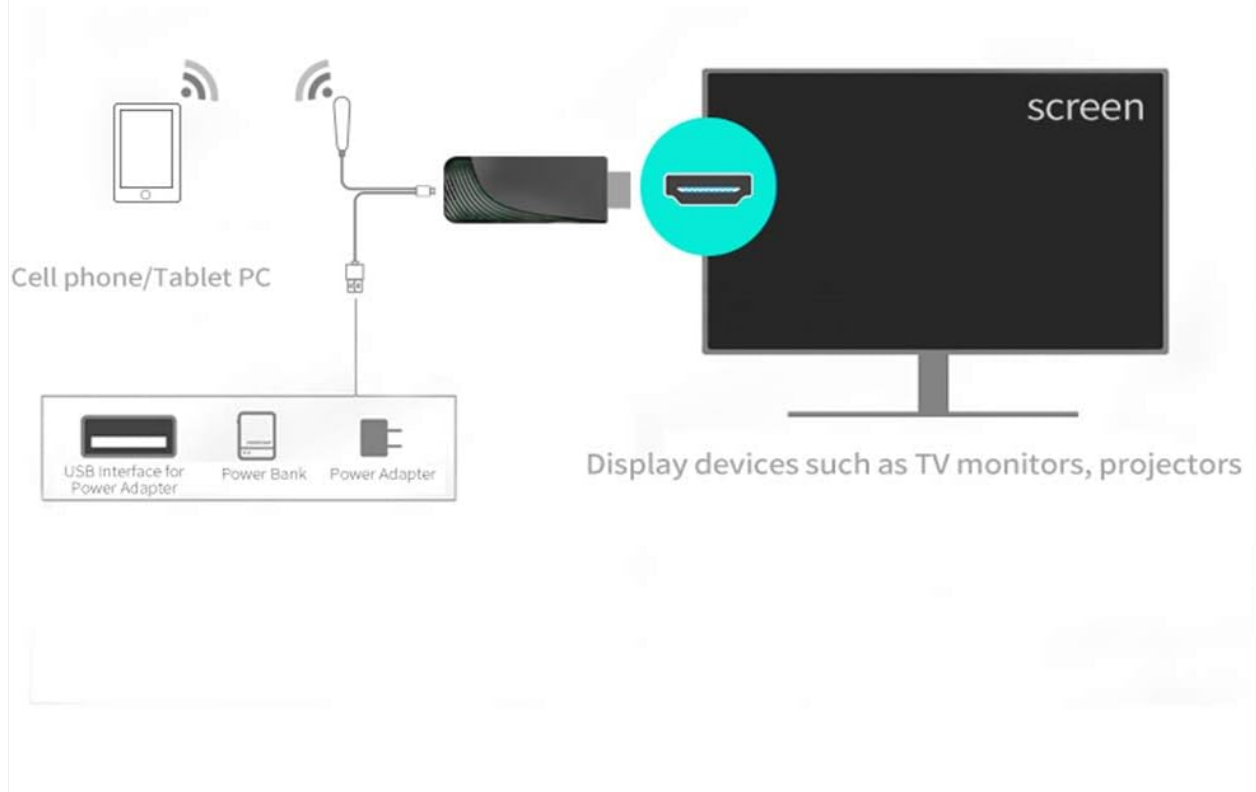


Image 3: 1080P HD Picture Quality. This image compares a 720P display with a 1080P display of a parrot, demonstrating the enhanced clarity and detail of 1080P resolution.

- **Multi-Protocol Support:** Compatible with DLNA, AirPlay, and Miracast protocols, ensuring broad compatibility with various devices.
- **Wide Device Compatibility:** Supports mirroring from iOS (iPhone, iPad), Android smartphones and tablets, and Windows laptops to HDMI-enabled displays.
- **Cool Light Indicator:** Features a soft green light indicator that is gentle on the eyes, allowing users to easily monitor the device's working status.

# Cool Light Indicator No Fear of Black

...

Intimate soft green light indicator, in line with human eye sensitivity ,Soft light and not glaring, you can know the working status at a glance and easily find the device.

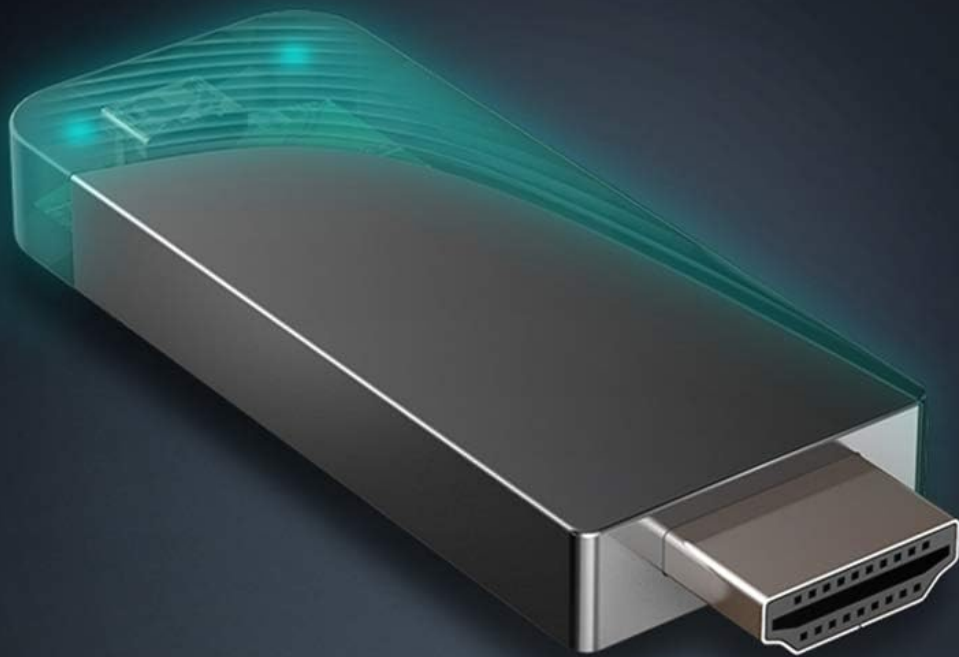


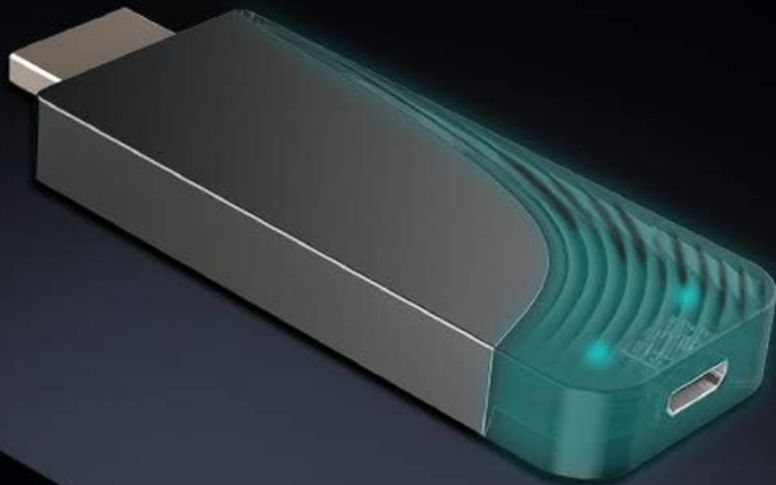
Image 4: Cool Light Indicator. This image shows the MiraScreen D7 dongle with a soft green light emanating from its translucent section, indicating its operational status.

- **Streamlined Design & High-end Material:** Constructed with ABS semi-permeable material and aviation-grade zinc alloy, offering a durable and aesthetically pleasing design.

## Streamlined Design

...

Combine Soft Lines with Noble Zinc Alloy, 3D curve design, in line with aesthetics. Smooth lines, showing extraordinary quality.



## High-end Material

...

Made of ABS semi-permeable material and aviation grade zinc alloy material, the D5 has higher hardness and delicate touch, which breaks through traditional craftsmanship.

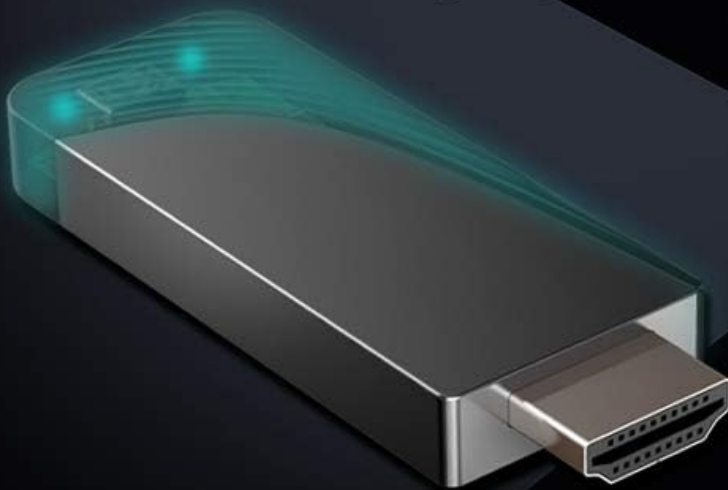


Image 5: Streamlined Design. This image highlights the sleek, curved design of the MiraScreen D7 dongle, emphasizing its modern aesthetic and zinc alloy construction.



# Cell Phone Mirrors to TV Bigger Screen and Clearer Picture

Mirroring the contents in cell phones to monitors, for large screen viewing.



Support mirroring to HDMI devices such as TVs, monitor and projectors.



Image 6: High-end Material. This image further details the construction of the MiraScreen D7, showcasing its ABS semi-permeable and aviation-grade zinc alloy materials.

## 3. PACKAGE CONTENTS

Please verify that all items are present in your package:

- MiraScreen D7 Wireless Display Dongle
- USB Power Cable (for power supply and WiFi antenna)
- User Manual (this document)

## 4. SETUP INSTRUCTIONS

---

Follow these steps to set up your MiraScreen D7 dongle:

1. **Connect to Display:** Plug the MiraScreen D7 dongle into an available HDMI port on your TV, projector, or car screen.
2. **Connect Power:** Connect the USB power cable to the dongle and then to a USB power source (e.g., a USB port on your TV, a USB wall adapter, or a power bank). Ensure the power source provides at least 5V/1A.
3. **Select Input:** Switch your display device's input source to the HDMI port where the MiraScreen D7 is connected. You should see the MiraScreen setup screen.
4. **Initial Connection:** On your mobile device (phone/tablet/laptop), go to your WiFi settings and connect to the MiraScreen D7's WiFi network. The network name (SSID) and password will be displayed on your TV screen.
5. **Configure Network (Optional but Recommended):** Open a web browser on your mobile device and enter the IP address displayed on the MiraScreen setup screen (e.g., 192.168.203.1). This will open the MiraScreen settings page. From here, you can connect the MiraScreen D7 to your home or office WiFi network for internet access and a more stable connection.



# 5G WiFi, more smooth allows you to experience the thrill of games with a large screen

2.4G/5G dual-band WIFI, magnify the screen as well as your joy.  
Remark: Only products of 5G version support 5G function.

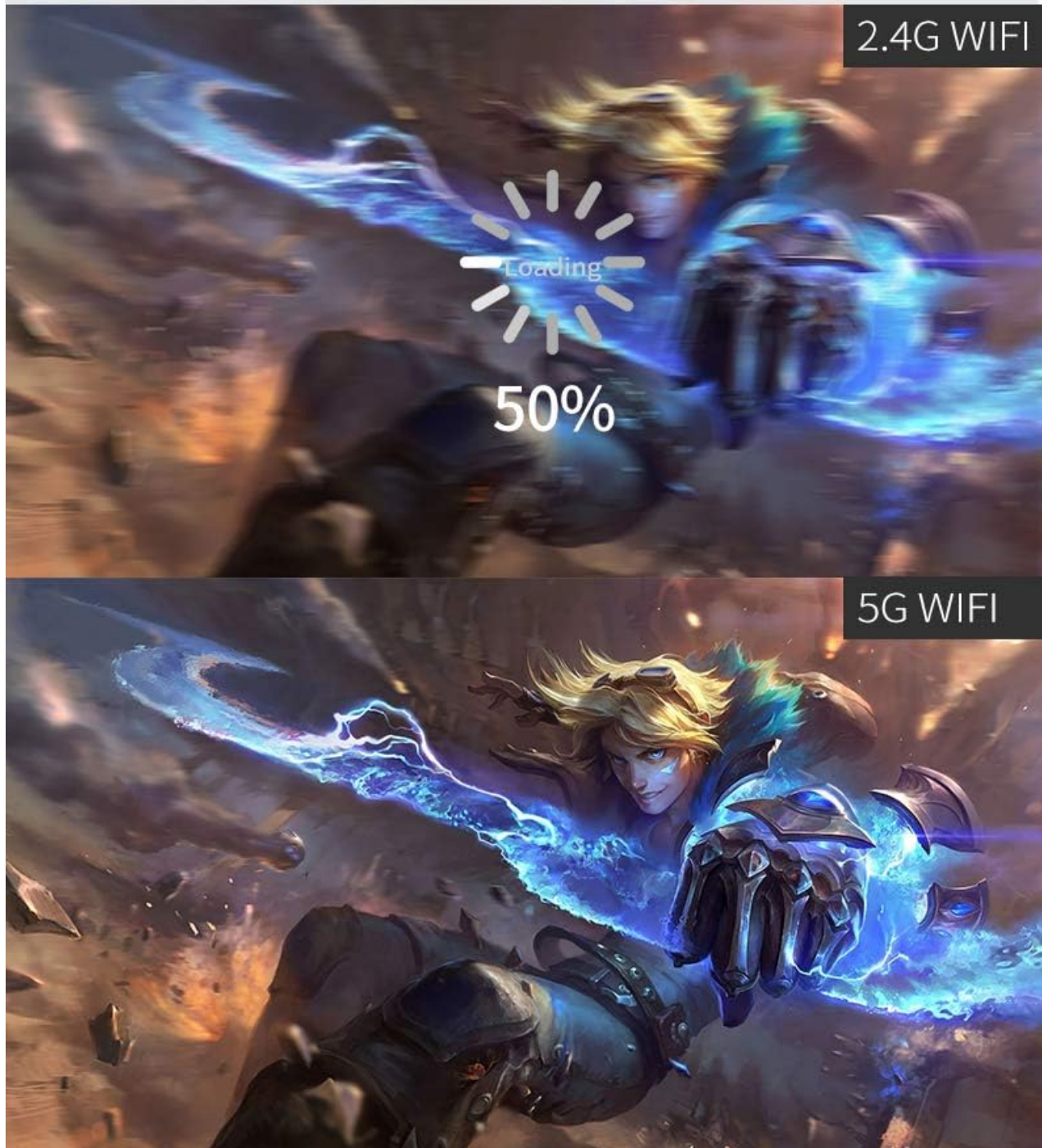


Image 7: MiraScreen D7 Connection Diagram. This diagram illustrates how to connect the MiraScreen D7 dongle to a display device (TV, monitor, projector) via HDMI and power it using a USB interface, power bank, or power adapter, enabling screen mirroring from a cell phone or tablet PC.

## 5. OPERATING INSTRUCTIONS

### 5.1. iOS Devices (AirPlay)

1. Ensure your iOS device is connected to the MiraScreen D7's WiFi network (or the same WiFi network if the dongle is configured).
2. Swipe down from the top-right corner (or up from the bottom for older models) to open the Control Center.
3. Tap on "Screen Mirroring" or "AirPlay".
4. Select the MiraScreen device (e.g., "Miraplus5G BF3DFACB") from the list.
5. Your iOS device screen will now be mirrored to the connected display.

## 5.2. Android Devices (Miracast)

1. Ensure your Android device is connected to the MiraScreen D7's WiFi network (or the same WiFi network if the dongle is configured).
2. Navigate to your device's settings and look for "Cast," "Smart View," "Wireless Display," "Screen Mirroring," or similar options. The exact name may vary by device manufacturer.
3. Enable the feature and select the MiraScreen device from the list of available devices.
4. Your Android device screen will now be mirrored to the connected display.

## 5.3. Windows Devices (Miracast)

1. Ensure your Windows device is connected to the MiraScreen D7's WiFi network (or the same WiFi network if the dongle is configured).
2. On your Windows 10/11 PC, press the Windows key + P to open the Project menu.
3. Select "Connect to a wireless display."
4. Choose the MiraScreen device from the list.
5. Your Windows screen will now be mirrored or extended to the connected display.

## 6. MAINTENANCE

- Keep the device in a dry environment and avoid exposure to moisture or extreme temperatures.
- Clean the device gently with a soft, dry cloth. Do not use liquid cleaners or aerosols.
- Unplug the device from the power source when not in use for extended periods.
- Avoid dropping or subjecting the device to strong impacts.

## 7. TROUBLESHOOTING

Problem	Possible Solution
No display on screen after connecting.	<ul style="list-style-type: none"><li>• Ensure the dongle is securely plugged into the HDMI port.</li><li>• Verify the display's input source is set to the correct HDMI port.</li><li>• Check if the USB power cable is properly connected and receiving sufficient power (5V/1A minimum). Try a different USB power adapter if available.</li></ul>
Cannot find MiraScreen WiFi network.	<ul style="list-style-type: none"><li>• Ensure the dongle is powered on and the indicator light is active.</li><li>• Restart the dongle by unplugging and re-plugging the USB power cable.</li><li>• Move your mobile device closer to the dongle.</li></ul>

Problem	Possible Solution
Screen mirroring is laggy or buffers frequently.	<ul style="list-style-type: none"><li>• Ensure your device and the MiraScreen D7 are connected to a 5G WiFi network if possible, as it offers better performance.</li><li>• Reduce the distance between your device, the dongle, and your WiFi router.</li><li>• Minimize interference from other wireless devices.</li><li>• If the dongle is connected to your home WiFi, ensure the WiFi signal is strong.</li></ul>
Device feels hot during operation.	<ul style="list-style-type: none"><li>• It is normal for the device to generate some heat during operation.</li><li>• Ensure adequate ventilation around the dongle. Avoid covering it or placing it in enclosed spaces.</li><li>• If overheating leads to performance issues or shutdowns, ensure the power supply is stable and within specifications (5V/1A).</li></ul>
Cannot mirror content from certain apps (e.g., Netflix, Hulu).	<ul style="list-style-type: none"><li>• Some streaming services and apps implement Digital Rights Management (DRM) which prevents screen mirroring to external displays. This is a restriction of the content provider, not the MiraScreen D7.</li></ul>

## 8. SPECIFICATIONS

Brand	MiraScreen
Model Number	D7
Item Weight	1.13 ounces
Product Dimensions	2.32 x 0.98 x 0.35 inches
Connector Type	HDMI
Resolution	1080p (1920x1080 Pixels)
Video Output Resolution	1920x1080 Pixels
Compatible Devices	Television, Projectors, Car Screens (with HDMI input)
Wireless Protocols	DLNA, AirPlay, Miracast
WiFi Support	2.4G / 5G Dual-band WiFi
UPC	619191719983

## 9. WARRANTY AND SUPPORT

For warranty information and technical support, please refer to the official MiraScreen website or contact your retailer. Keep your purchase receipt for warranty claims.

For further assistance, you may visit the [MiraScreen Store on Amazon](#).

