

Manuals.plus /

- › Conair /
- › Conair The Knot Dr. All-in-One Smoothing Dryer Brush User Manual

Conair BC120

Conair The Knot Dr. All-in-One Smoothing Dryer Brush

Brand: Conair | Model: BC120

INTRODUCTION

The Conair The Knot Dr. All-in-One Smoothing Dryer Brush is designed to detangle, dry, and style hair in one easy step. It features 136 Flexalite bristles for painless detangling and a silicone-cushioned paddle for smoothing and adding shine. With multiple heat settings (cool, low, high) and a cool shot function, it caters to all hair types. A powerful ion generator helps eliminate frizz, leaving hair silky smooth and frizz-free. This 1000-watt tool is lightweight and can also be used as a standalone dryer by removing the brush attachment, making it convenient for storage and travel.



The Conair The Knot Dr. All-in-One Smoothing Dryer Brush in its complete form.

KEY FEATURES

- **All-in-One Styling Tool:** Detangle, dry, and style your hair with a single tool. The silicone-cushioned paddle is ideal for smoothing and adding shine, helping you achieve a salon-quality blowout at home.
- **Versatile Multifunction:** Suitable for all hair types, this lightweight (1lb.) hot air brush offers one speed and two heat settings (low, high), plus a cool setting. With 1000 watts of power, it ensures efficient drying and styling.
- **Painless Detangling:** Equipped with 138 easy-glide Flexalite nylon bristles featuring epoxy tips, this brush helps detangle hair painlessly. The bristles are optimally spaced to smooth out knots and tangles without pulling.
- **Ion Technology:** A powerful ion generator works to eliminate frizz, leaving your hair silky smooth and free from static.
- **Removable Handle for Drying:** The handle can be used as a standalone dryer without attachments,

perfect for drying damp hair before styling or for quick touch-ups.

- **Compact Design:** Conveniently designed for easy storage and travel.

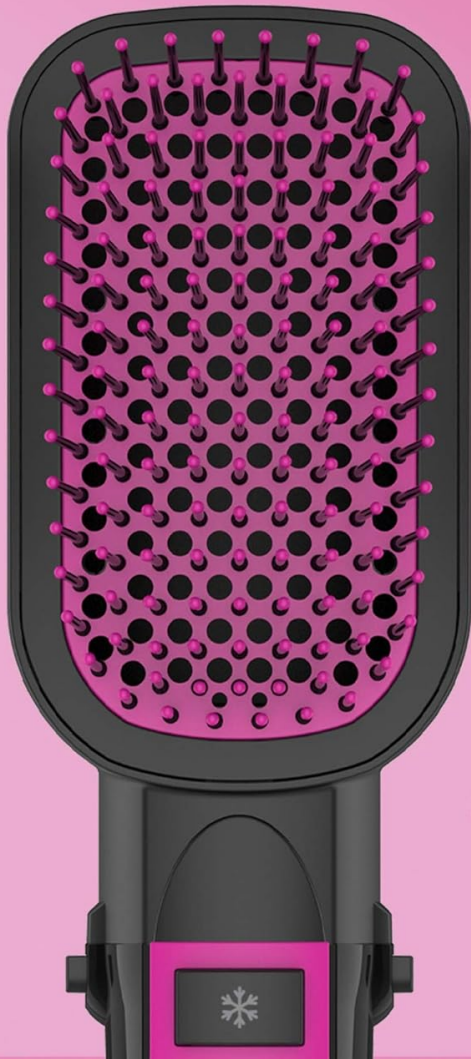


All-In-One Smoothing Dryer Brush

dry + style

do both in one step for a salon
blowout at home

The brush head and handle, highlighting its dual functionality for drying and styling.



perfect design

silicone-cushioned paddle
is ideal for smoothing
and adding shine

Detail of the silicone-cushioned paddle, designed for smoothing and adding shine.

heat for every hair type

select high for thick hair,
low for fine or cool shot
to lock in your look



high performance

1000 watts of power

The heat settings (Hi, Lo, Cool, Off) and cool shot button on the handle.

be the PRO™

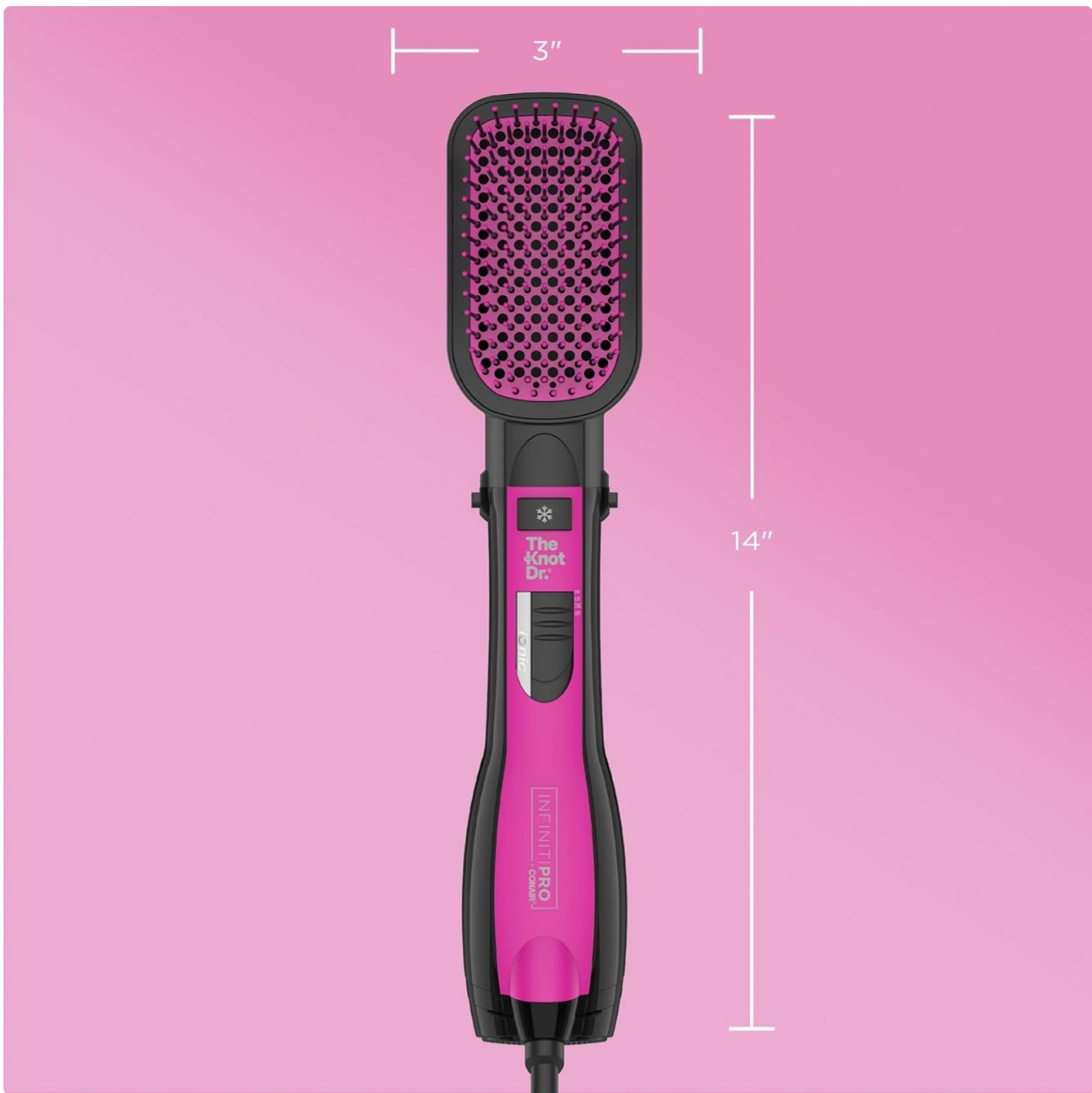
our PRO tip

YOU CAN HANDLE IT!

Use handle without attachments to
remove excess moisture from hair before styling



The handle can be detached and used as a standalone dryer to remove excess moisture.



The compact dimensions of the dryer brush, measuring 3 inches wide and 14 inches long.

SETUP

Attaching the Brush Head:

1. Align the brush head with the main dryer unit.
2. Gently push the brush head onto the dryer unit until it clicks securely into place. Ensure it is firmly attached before use.

Detaching the Brush Head:

1. Locate the release buttons or tabs on the sides of the dryer unit, near where the brush head attaches.
2. Press and hold these buttons while gently pulling the brush head away from the main dryer unit.
3. The main unit can then be used as a compact hair dryer.

Official product overview video demonstrating the assembly and disassembly of the dryer brush.

OPERATING INSTRUCTIONS

1. **Prepare Hair:** Ensure hair is towel-dried and detangled before use. For best results, hair should be damp, not soaking wet.
2. **Select Heat Setting:** Use the switch on the handle to select your desired heat setting: Low, High, or Cool. The Cool setting is ideal for fine hair or for setting your style.
3. **Detangle and Dry:** Begin by detangling your hair with the 136 Flexalite bristles. As you brush, the hot air will dry your hair.
4. **Smooth and Add Shine:** For maximum smoothing and shine, pull the hair taut against the silicone-cushioned paddle as you brush.
5. **Add Volume:** For added volume, brush close to the roots of your hair.
6. **Use as Standalone Dryer:** If desired, detach the brush head and use the handle as a compact dryer to remove excess moisture from hair before styling with the brush attachment.
7. **Set Style:** Use the Cool Shot button to lock in your finished style.
8. **Scalp Massage:** The epoxy tips of the Flexalite bristles can gently massage the scalp for a soothing effect during use.

Official product overview video demonstrating the usage of the dryer brush for styling.

MAINTENANCE

- **Cleaning Bristles:** Regularly remove any hair tangled in the bristles. You can use a comb or your fingers to gently pull out accumulated hair.
- **Wipe Down:** After each use, ensure the device is unplugged and cool. Wipe the body of the dryer brush with a soft, damp cloth. Do not use abrasive cleaners or immerse the device in water.
- **Clear Air Vents:** Periodically check the air intake filter at the back of the dryer unit and the air outlet on the brush head for any lint or dust buildup. Use a small brush or vacuum cleaner to gently clear any obstructions to maintain optimal airflow and prevent overheating.
- **Storage:** Store the dryer brush in a cool, dry place when not in use. You can detach the brush head for more compact storage.

TROUBLESHOOTING

- **Device Not Turning On:**
 - Ensure the power cord is securely plugged into a working electrical outlet.
 - Check the power switch on the device to ensure it is in the 'ON' or a heat setting position.

- Verify that the brush head is correctly attached and clicked into place if you are using it in brush mode.

- **Low Airflow or Overheating:**

- Unplug the device and allow it to cool down.
- Check the air intake filter at the back of the dryer and the air outlet on the brush head for any lint, dust, or hair buildup. Clean as described in the Maintenance section.
- Ensure the device is not being used in an enclosed space where airflow is restricted.

- **Hair Not Smoothing Effectively:**

- Ensure your hair is damp, not soaking wet, for optimal results.
- Section your hair into smaller, manageable portions.
- Ensure you are using the appropriate heat setting for your hair type.
- Brush slowly and consistently from root to tip, pulling the hair taut against the silicone paddle.

SPECIFICATIONS

Feature	Detail
Product Dimensions	13.8 x 2.8 x 2.6 inches; 1.3 Pounds
Item Model Number	BC120
UPC	074108428448
Manufacturer	Conair
ASIN	B08YKCV2YC
Country of Origin	China
Brand	Conair
Color	Paddle Dryer Brush
Material	Ceramic
Wattage	1000 watts
Power Source	Corded Electric

WARRANTY AND SUPPORT

For detailed warranty information and customer support, please refer to the official user manual provided with your product. You can also visit the official Conair website for additional resources and contact information.

User Manual (PDF): [Download Here](#)

For further assistance, please contact Conair customer service directly.