

Thomson 132568

Thomson WEAR7701 Bluetooth HiFi Earbuds Instruction Manual

Model: 132568

[Introduction](#)

[Package Contents](#)

[Setup](#)

[Operating Instructions](#)

[Maintenance](#)

[Troubleshooting](#)

[Specifications](#)

[Warranty & Support](#)

1. INTRODUCTION

The Thomson WEAR7701 Bluetooth HiFi Earbuds provide a wireless audio experience with high-fidelity sound. Designed for comfort and convenience, these lightweight in-ear headphones feature touch controls, voice assistant compatibility, and IPX4 splash protection, making them suitable for various activities, including sports.

This manual provides detailed instructions for setting up, operating, and maintaining your WEAR7701 earbuds to ensure optimal performance and longevity.



Image 1.1: Thomson WEAR7701 Bluetooth HiFi Earbuds in their charging case. The earbuds are black with metallic accents, and the charging case is also black, open to show the earbuds nestled inside.

2. PACKAGE CONTENTS

Please check that all items are present in the package:

- 1x Thomson WEAR7701 Bluetooth Earbuds
- 1x Charging Case
- 3x Pairs of Silicone Ear Tips (Sizes S, M, L)
- 1x Micro USB Charging Cable
- 1x User Manual

3. SETUP

3.1 Initial Charging

Before first use, fully charge the earbuds and the charging case.

1. Connect the supplied Micro USB cable to the charging port on the charging case and to a suitable

USB power source.

2. Place the earbuds into the charging case. Ensure they are correctly seated; indicator lights on the earbuds or case will confirm charging status.
3. A full charge for the case takes approximately 3 hours. The earbuds charge within the case.

The charging case provides up to 3 additional full charges for the earbuds, extending their usage time.

3.2 Pairing with a Bluetooth Device

For the first connection, it is crucial to remove both earbuds from the charging case simultaneously to ensure proper stereo pairing with your smartphone.

1. Ensure your smartphone's Bluetooth function is enabled.
2. Remove both earbuds from the charging case. They will automatically power on and enter pairing mode.
3. On your smartphone, search for available Bluetooth devices.
4. Select "Thomson WEAR7701" (or similar name) from the list of found devices.
5. Once connected, your device will indicate successful pairing.

Important Note: If only one earbud connects, place both earbuds back into the charging case, close the lid, wait a few seconds, then remove both simultaneously and repeat the pairing process.

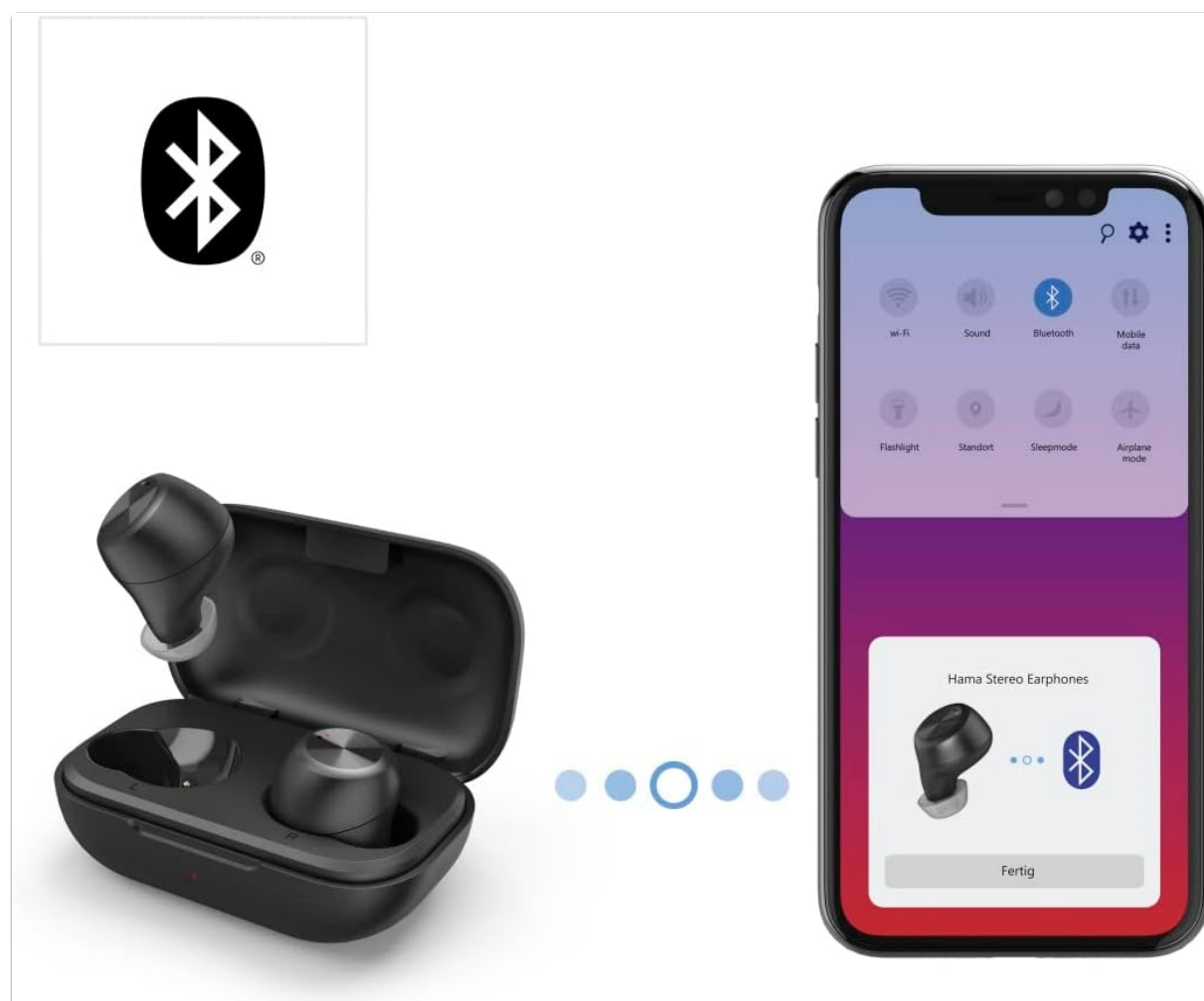


Image 3.1: Illustration of the Bluetooth pairing process, showing the earbuds in their case and a smartphone screen displaying available Bluetooth devices, with the earbuds selected for connection.

4. OPERATING INSTRUCTIONS

4.1 Power On/Off

- **Power On:** The earbuds automatically power on when removed from the charging case.
- **Power Off:** The earbuds automatically power off when placed back into the charging case and the lid is closed.

4.2 Touch Controls

The earbuds feature intuitive touch controls for managing music playback and calls.

- **Play/Pause Music:** Single tap on either earbud.
- **Next Track:** Double tap on the right earbud.
- **Previous Track:** Double tap on the left earbud.
- **Answer/End Call:** Single tap on either earbud.
- **Reject Call:** Press and hold on either earbud for 2 seconds.
- **Activate Voice Assistant (Siri/Google Assistant):** Triple tap on either earbud.

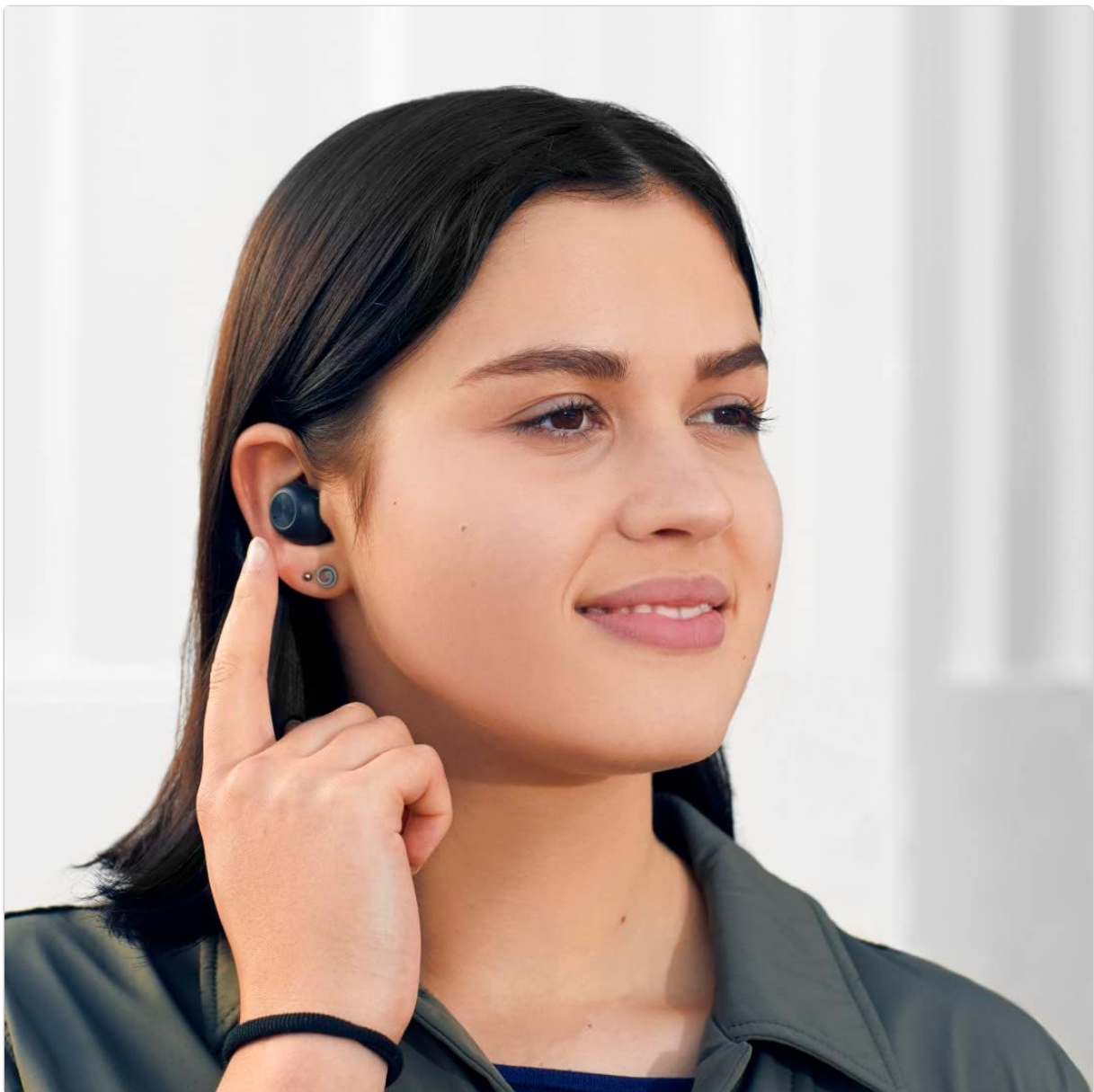


Image 4.1: A person demonstrating the touch control feature on an earbud, indicating the area for interaction.

4.3 Wearing the Earbuds

Select the ear tips that provide the most comfortable and secure fit. The package includes three sizes (S,

M, L) of Mushroom-shaped silicone ear tips to ensure a proper seal for optimal sound quality and stability, even during physical activity.

1. Gently insert the earbud into your ear canal.
2. Rotate the earbud slightly until it feels secure and comfortable.
3. If the fit is not ideal, try a different size of ear tip.

5. MAINTENANCE

5.1 Cleaning

- Regularly clean the earbuds and charging case with a soft, dry, lint-free cloth.
- Remove ear tips and clean them with mild soap and water, then dry thoroughly before reattaching.
- Do not use abrasive cleaners, alcohol, or chemical solvents.

5.2 Water Resistance (IPX4)

The Thomson WEAR7701 earbuds are rated IPX4, meaning they are protected against splashing water from any direction. This makes them suitable for use during workouts or in light rain.

- Do not submerge the earbuds in water.
- Do not expose them to pressurized water or high-velocity water, such as showering or swimming.
- Ensure the earbuds are dry before placing them back into the charging case to prevent damage to the charging contacts.



Image 5.1: Visual representation of IPX4 water resistance, showing the earbuds with water splashing around them, indicating protection against splashes.

5.3 Storage

When not in use, store the earbuds in their charging case to protect them and keep them charged.

6. TROUBLESHOOTING

6.1 Earbuds Not Pairing or Only One Earbud Connects

- Ensure both earbuds are fully charged.
- Place both earbuds back into the charging case, close the lid, wait a few seconds, then remove both simultaneously.
- Delete the earbuds from your device's Bluetooth list ("Forget Device") and attempt to pair again from scratch.
- Ensure the earbuds are within Bluetooth range of your device (up to 10 meters).

6.2 No Sound or Low Volume

- Check the volume level on both your connected device and the earbuds.
- Ensure the earbuds are properly seated in your ears and that the ear tips provide a good seal.
- Reconnect the earbuds to your device.
- Clean any debris from the earbud speakers.

6.3 Charging Issues

- Ensure the charging cable is securely connected to both the case and the power source.
- Verify that the power source is functional.
- Clean the charging contacts on both the earbuds and inside the charging case.
- Try a different Micro USB charging cable.

7. SPECIFICATIONS

Model Name	WEAR7701
Model Number	132568
Color	Black
Connectivity	Bluetooth 5.0
Bluetooth Class	Class 2
Frequency Band	2402-2480 MHz
Earbud Frequency Range	20 Hz - 20 kHz
Microphone Frequency Range	100 Hz - 5 kHz
Earbud Impedance	32 Ω
Microphone Impedance	2.2 kΩ
Transmission Distance	10 m
Earbud Sensitivity	92 dB +/- 3 dB

Microphone Sensitivity	-42 dB ± 3 dB
Max. Talk Time	4 hours
Max. Music Playback Time	4 hours
Max. Standby Time	150 hours
Charging Case Recharges	Up to 3 times
Average Charging Time (Case)	3 hours
Charging Type	Micro USB
Microphone Position	Integrated
Microphone Type	Omnidirectional
Voice Control	Apple Siri / Google Assistant
Supported Bluetooth Profiles	A2DP V1.3/AVRCP V1.6/HFP V1.7/SPP V1.2
Special Features	Finger-Touch Sensor, QuickPair, Call Answer Button, True Wireless
Water Resistance Rating	IPX4 (Splash-proof)
Weight (per earbud)	4 g
Total Weight	41 g (earbuds + case)
Recommended Use	Sports

8. WARRANTY AND SUPPORT







Thomson products are manufactured with attention to quality and performance. For information regarding warranty coverage, please refer to the warranty card included with your product or visit the official Thomson website.

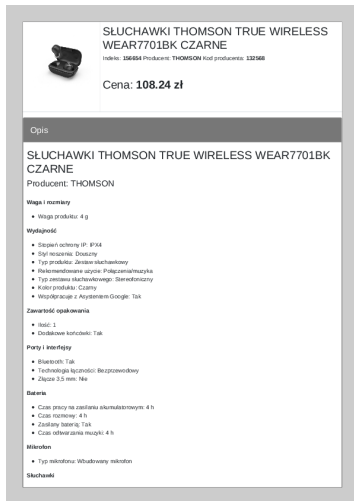
For technical support, troubleshooting assistance, or to inquire about replacement parts, please contact Thomson customer service through their official channels. Contact details can typically be found on the product packaging or the manufacturer's website.

Please retain your proof of purchase for warranty claims.

© 2023 Thomson. All rights reserved.

This manual is for informational purposes only. Specifications are subject to change without notice.

 <p>THOMSON True Wireless Headphones Earbuds True Wireless True Wireless Headphones WEAR 77032</p>	<p>Thomson WEAR 77032 True Wireless Headphones User Manual</p> <p>User manual for Thomson WEAR 77032 True Wireless Headphones. Learn about setup, features, operation, safety, and technical specifications for your wireless audio device.</p>
 <p>THOMSON True Wireless Headphones Earbuds True Wireless True Wireless Headphones WEAR 7701</p>	<p>Thomson WEAR 7701 True Wireless Headphones User Manual</p> <p>Get detailed operating instructions, safety information, and technical specifications for the Thomson WEAR 7701 True Wireless Headphones. Learn how to pair, charge, and use your headphones.</p>
 <p>Wireless UHF headphones Complete with UHF UHF Pure Headphones</p>	<p>Thomson WHP3001BK UHF Wireless Headphones - Operating Instructions & Guide</p> <p>Comprehensive operating instructions and guide for the Thomson WHP3001BK UHF wireless headphones, covering setup, usage, troubleshooting, safety notes, and technical specifications.</p>
 <p>THOMSON True Wireless Headphones Earbuds True Wireless True Wireless Headphones WEAR 7701</p>	<p>Thomson WEAR 7701 True Wireless Headphones: User Guide and Features</p> <p>Comprehensive guide to Thomson WEAR 7701 True Wireless Headphones, covering setup, Bluetooth pairing, touch controls, charging, and support information. Includes safety warnings.</p>
 <p>THOMSON Wireless UHF headphones Complete with UHF UHF Pure Headphones</p>	<p>Thomson WHP3001BK Wireless UHF Headphones - User Manual & Instructions</p> <p>Comprehensive user manual and operating instructions for the Thomson WHP3001BK Wireless UHF Headphones. Learn about setup, features, troubleshooting, and technical specifications.</p>
 <p>THOMSON Wireless UHF headphones Complete with UHF UHF Pure Headphones</p>	<p>Thomson Wireless UHF Headphones User Manual</p> <p>User manual for Thomson Wireless UHF headphones, providing setup instructions, safety guidelines, troubleshooting tips, and technical specifications.</p>



[pdf]

SŁUCHAWKI THOMSON TRUE WIRELESS WEAR7701BK CZARNE Sklep internetowy stylem pl

sluchawki thomson true wireless wear7701bk czarne 156654 upload files product |||

SLUCHAWKI THOMSON TRUE WIRELESS WEAR7701BK CZARNE Indeks:

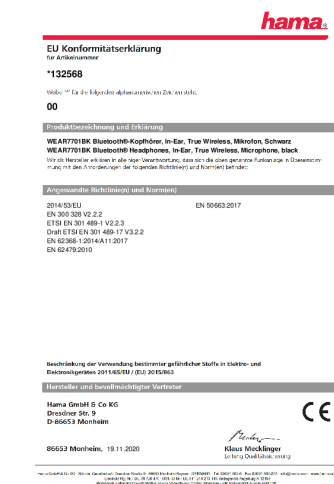
156654 Producent: THOMSON Kod producenta: **132568** Cena: 108.24 zł Opis

SLUCHAWKI THOMSON TRUE WIRELESS WEAR7701BK CZARNE Producent:

THOMSON Waga i rozmiary Waga produktu: 4 g Wydajno Stopie ochrony IP: IPX4

Styl noszenia: Douszny Typ produktu:...

lang:sw score:21 filesize: 59.24 K page_count: 2 document date: 2022-08-13



[pdf] Accessories

00132568kon bg cs da de el en es fi fr hu it nl pl pt ro ru sk sv tr 300 thomson av accessories eu

webresources article documents 00132 kon |||

***132568** 00 WEAR7701BK Bluetooth-Kopfhörer, In-Ear, True Wireless, Mikrofon, Schwarz WEAR7701BK Bluetooth Headphones, In-Ear, True Wireless, Microphone, black 2014/53/EU EN 300 328 V2.2.2 ETSI EN 301 489-1 V2.2.3 Draft ETSI EN 301 489-17 V3.2.2 EN 62368-1:2014/A11:2017 EN 62479:2010 EN 50663:2017 1...

lang:i-klinton score:16 filesize: 10.06 M page_count: 19 document date: 2020-11-19