



[Manuals.plus](#) /

> [MISINI](#) /

> CADA Technology S059 Power Supply Function Kit User Manual

MISINI S059

CADA Technology S059 Power Supply Function Kit User Manual

Model: S059-003 | Brand: MISINI

INTRODUCTION

This user manual provides detailed instructions for the CADA Technology S059 Power Supply Function Kit. This kit is designed to enhance technology vehicles and includes essential components such as motors, LED lights, a battery box, and a 2.4GHz remote control. Please read this manual thoroughly before use to ensure proper operation and longevity of your product.

PACKAGE CONTENTS



Figure 1: Overview of the CADA Technology S059 Power Supply Function Kit packaging and included components.

The CADA Technology S059 Power Supply Function Kit includes the following items:

- 1 x 3.7V Lithium Battery
- 1 x 2.4GHz Remote Control
- 1 x 80cm White Round USB Charging Cable
- 1 x L-shaped Motor (L-Motor Pro)
- 1 x M-shaped Motor (M-Motor Pro)
- 1 x Power Steering Motor (Steering Motor Pro)
- 1 x Plug Extension Cable
- 1 x LED Light Group



Figure 2: Detailed view of the individual components: L-Motor Pro, Steering Motor Pro, M-Motor Pro, 2.4G Rechargeable Battery Box, LED Light Set, Extension Cable, and 2.4G Remote Control.

COMPONENTS OVERVIEW

2.4GHz Remote Control

Motorized version Remote control features

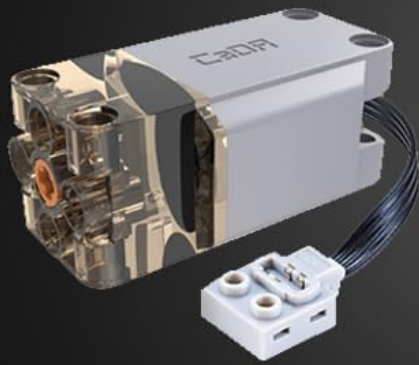
2.4GHz system, Interference free system,
30m of remote control range.



Figure 3: The 2.4GHz remote control features a power switch, indicator light, forward/backward controls, and driving steering. It operates on a 2.4GHz system with an interference-free range of up to 30 meters.

The 2.4GHz remote control allows for precise command of your technology vehicle. It features a 2.4GHz interference-free system with a range of up to 30 meters. Key functions include:

- **Power Switch:** Turns the remote control on/off.
- **Indicator Light:** Shows the status of the remote control.
- **Forward and Backward Controls:** For vehicle movement.
- **Driving Steering:** For directional control.
- **Reverse Switch:** For reversing movement.



L-Motor Pro x1



Figure 5: The L-Motor Pro, designed for high power output.



M-Motor Pro x1



Figure 6: The M-Motor Pro, a versatile motor for various applications.



Figure 7: The Steering Motor Pro, optimized for steering mechanisms.

LED Light Group and Extension Cable

The LED light group provides illumination for your model, and the extension cable allows for flexible placement of components.



Figure 8: The LED Light Set and Extension Cable, essential for lighting and connectivity.

SETUP

Battery Charging

The kit includes a 3.7V Lithium battery (500mAh 7.4V, rechargeable). Before first use, fully charge the battery using the provided 80cm white round USB charging cable.

1. Connect the small end of the USB charging cable to the charging port on the battery box.
2. Connect the larger end of the USB charging cable to a standard USB power adapter (not included) or a computer USB port.
3. The indicator light on the battery box will show charging status (refer to battery box specific instructions if available, otherwise general).
4. Once fully charged, disconnect the cable.

Connecting Components

Connect the motors, LED light group, and extension cable to the 2.4G Rechargeable Battery Box according to your model's design. Ensure all connections are secure.

1. Identify the ports on the 2.4G Rechargeable Battery Box.
2. Plug the cables from the L-Motor Pro, M-Motor Pro, and Steering Motor Pro into the appropriate motor ports on the battery box.
3. Connect the LED Light Group cable to an available port.
4. Use the Extension Cable if additional length is required for any component connection.
5. Ensure all plugs are fully inserted to establish a proper connection.

OPERATING INSTRUCTIONS

Pairing the Remote Control

To operate your model, the remote control must be paired with the battery box.

1. Ensure the battery box is powered on.
2. Turn on the 2.4GHz Remote Control using its power switch.
3. The indicator light on both the remote control and battery box should indicate a successful connection (e.g., solid light). Refer to specific model instructions for pairing sequence if needed.

Controlling Your Model

Once paired, use the remote control to operate the connected motors and lights.

- Use the **Forward and Backward** controls to move the vehicle.
- Utilize the **Driving Steering** control for directional changes.
- The **Reverse Switch** can be used for specific reversing actions.
- The LED lights can be controlled via the remote if your model supports this function.

For specific control schemes, refer to the building instructions of your CADA Technology vehicle model (e.g., C61045W, C61007W, C61016W, C61018W, C61019W, C61020W).

MAINTENANCE

- **Cleaning:** Use a soft, dry cloth to clean the components. Do not use water or cleaning agents.
- **Storage:** Store the kit in a cool, dry place away from direct sunlight and extreme temperatures.
- **Battery Care:** For long-term storage, charge the Lithium battery to approximately 50% capacity. Do not fully discharge the battery before storing.
- **Connection Check:** Periodically check all cable connections for looseness or damage.

TROUBLESHOOTING

Problem	Possible Cause	Solution
Motors not responding.	Battery low or not charged; Remote control not paired; Loose connections; Motor malfunction.	Charge the battery; Re-pair the remote control; Check all cable connections; If problem persists, motor may be faulty.

Problem	Possible Cause	Solution
Remote control not turning on.	Remote control battery low/dead.	Replace batteries in the remote control (if applicable, or ensure it's charged if rechargeable).
LED lights not working.	Loose connection; Damaged LED group.	Check the connection of the LED light group to the battery box; Inspect the LED group for visible damage.
Short operating time.	Battery not fully charged; Battery degradation.	Ensure battery is fully charged before use; Consider replacing the battery if it no longer holds a charge.

SPECIFICATIONS

- **Model Number:** S059-003
- **Battery Type:** 3.7V Lithium Ion (500mAh 7.4V, rechargeable)
- **Remote Control Frequency:** 2.4GHz
- **Remote Control Range:** Up to 30 meters
- **Charging Cable:** 80cm USB charging cable
- **Included Motors:** L-Motor Pro, M-Motor Pro, Steering Motor Pro
- **LED Light Cable Length:** 53cm
- **Item Weight:** Approximately 14 ounces (397 grams)
- **Package Dimensions:** 9.49 x 6.57 x 2.01 inches (24.1 x 16.7 x 5.1 cm)
- **Applicable Models:** C61045W, C61007W, C61016W, C61018W, C61019W, C61020W, etc.



Figure 9: Product packaging with approximate dimensions.

WARRANTY AND SUPPORT

For warranty information or technical support, please contact MISINI customer service through the retailer where the product was purchased. Please retain your proof of purchase for any warranty claims.

