

SIEMENS SN4040B1200

SIEMENS SN Series 200 Amp 40-Space 40-Circuit Main Breaker Plug-On Neutral Indoor Load Center User Manual

Model: SN4040B1200 | Brand: SIEMENS

INTRODUCTION

This manual provides essential instructions for the safe and efficient installation, operation, and maintenance of your SIEMENS SN Series 200 Amp 40-Space 40-Circuit Main Breaker Plug-On Neutral Indoor Load Center. Please read this manual thoroughly before beginning any work to ensure proper understanding and to prevent potential hazards. This load center is designed for indoor use and features a 200 Amp main breaker, 40 spaces, and 40 circuits, incorporating a plug-on neutral design for simplified wiring.

IMPORTANT SAFETY INFORMATION

WARNING: Installation and servicing of this electrical equipment must be performed by qualified personnel only. Failure to follow these instructions can result in serious injury, death, or property damage.

- Always disconnect power at the main service panel before working on the load center or any associated wiring.
- Use appropriate personal protective equipment (PPE), including insulated gloves and safety glasses.
- Verify all connections are secure and properly torqued according to manufacturer specifications and local electrical codes.
- Ensure proper grounding and bonding as required by the National Electrical Code (NEC) and local regulations.
- Do not install this product in wet or damp locations unless specifically rated for such environments. This unit is NEMA Type 1 for indoor use.

SETUP AND INSTALLATION

The SIEMENS SN Series load center is designed for straightforward installation, featuring a plug-on neutral design and ample wire bending space. Always consult local electrical codes and a qualified electrician for installation.

1. Mounting the Load Center

Select a suitable indoor location for mounting, ensuring it is easily accessible and free from moisture. The load center should be securely fastened to a structural surface using appropriate hardware.



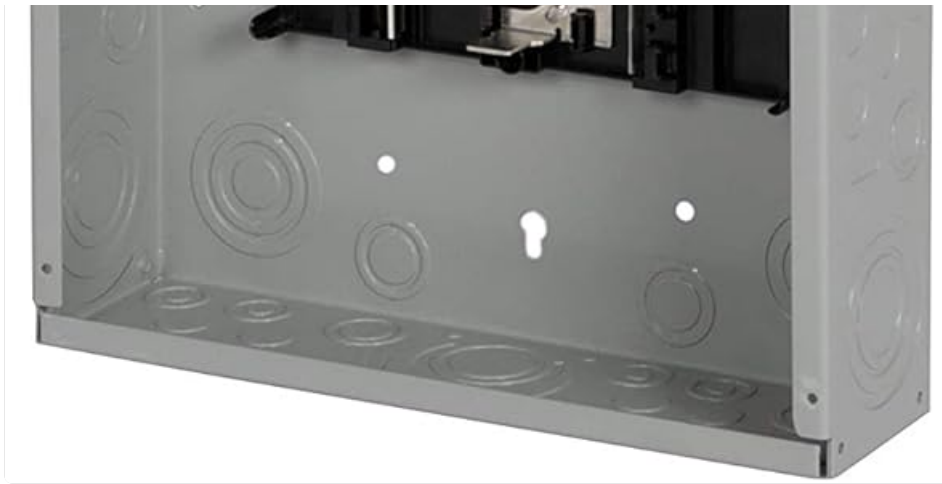


Figure 1: Interior view of the Siemens SN Series Load Center, showing the main breaker and bus bars.

This image displays the internal components of the Siemens SN Series Load Center, including the main breaker at the top, the bus bars running vertically, and the neutral/ground bars on the sides. The design provides clear access for wiring.

2. Wiring Connections

The load center supports 1-phase, 3-wire, 120/240V systems. It includes one factory-installed ground bar. Ensure all wire sizes comply with NEC and local codes. The plug-on neutral feature simplifies wiring for compatible breakers.

Your browser does not support the video tag.

Video 1: Demonstrates the installation process for Siemens Plug-On Neutral Load Centers and Breakers.

This video provides a visual guide to the installation of Siemens Plug-On Neutral Load Centers and Breakers, highlighting the ease of connecting breakers without pigtails and the spacious design for wire bending. It illustrates how the integrated neutral bus simplifies the installation process.

3. Installing Breakers

The SN Series load center is designed to accept Siemens plug-on neutral breakers. These breakers connect directly to the neutral bus, eliminating the need for a pigtail and providing a cleaner, more efficient installation. Single and two-pole CAFCI breakers only require landing the load conductor.





Figure 2: Close-up view of the load center interior, showing installed breakers and wiring space.

This image offers a detailed look at the interior of the load center with several circuit breakers installed. It highlights the ample wire bending space around the breakers, facilitating easier and neater wiring connections.

OPERATING INSTRUCTIONS

Once installed and energized, the load center operates by distributing electrical power to various circuits in your home or facility. Each circuit is protected by a circuit breaker.

Resetting a Tripped Breaker

1. **Identify the Tripped Breaker:** A tripped breaker will typically be in an intermediate position, between ON and OFF.
2. **Turn OFF:** Firmly push the handle of the tripped breaker completely to the OFF position.
3. **Turn ON:** Firmly push the handle of the breaker completely to the ON position.
4. If the breaker immediately trips again, there may be an electrical fault on the circuit. Do not attempt to reset it repeatedly. Consult a qualified electrician.

MAINTENANCE

The SIEMENS SN Series Load Center requires minimal maintenance. Regular inspections by a qualified electrician are recommended to ensure continued safe operation.

- **Annual Inspection:** Have a qualified electrician inspect the load center annually for loose connections, signs of overheating, corrosion, or damage.
- **Keep Clear:** Ensure the area around the load center remains clear of obstructions to allow for proper ventilation and access.
- **Cleanliness:** Keep the interior of the load center clean and free of dust and debris. Always disconnect power before cleaning.

TROUBLESHOOTING

Problem	Possible Cause	Solution
Breaker trips repeatedly	Overload, short circuit, or ground fault.	Reduce load on the circuit. Inspect wiring for damage. If problem persists, consult an electrician.
No power to a circuit	Tripped breaker, loose connection, or main breaker OFF.	Check and reset the circuit breaker. Ensure main breaker is ON. Check for loose connections (qualified personnel only).
Load center feels warm	Normal operation (slight warmth), or overloaded circuits/loose connections (excessive heat).	A slightly warm panel is normal. If excessively hot, immediately disconnect power and contact a qualified electrician.

SPECIFICATIONS

Brand: SIEMENS

Model Number: SN4040B1200

AC Adapter Current: 200 Amps

Number Of Circuits: 40

Number Of Spaces: 40

Phase Type: Single Phase

Voltage: 120/240V

Interrupt Rating: 22000AIC

Material: Alloy Steel

Enclosure Type: NEMA Type 1 (Indoor Use)

Item Weight: 36.8 pounds

Product Dimensions: 14.25 x 3.88 x 36 inches

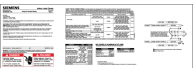



Included Components: Load Center, Instruction Sheet

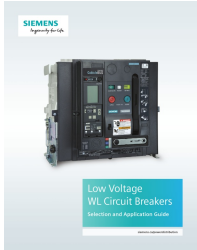
WARRANTY AND SUPPORT

For specific warranty details and technical support, please refer to the documentation included with your product or visit the official SIEMENS website. Contacting a qualified electrician is recommended for any service or repair needs.

You can visit the [SIEMENS Store on Amazon](#) for more information on their products.

Related Documents - SN4040B1200

	<p>Siemens SN3030B1150 Indoor Load Center Installation and Specifications</p> <p>Detailed specifications and installation guide for the Siemens SN3030B1150 Plug-On Neutral Ready Indoor Load Center. Includes breaker compatibility, wiring, and safety information.</p>
	<p>Siemens SN3048L1200 Indoor Load Center Technical Specification</p> <p>Detailed technical specifications and installation guidelines for the Siemens SN3048L1200 Indoor Load Center. This 200A maximum, 120/240V, 3-phase plug-on neutral ready enclosure features include wiring requirements, breaker compatibility tables, accessory information, and safety warnings.</p>
	<p>Siemens Metering and Load Center Selection and Application Guide</p> <p>Comprehensive guide to Siemens metering equipment, including combination meter sockets, meter mains, meter load centers, CT cabinets, all-in-one pak metering, modular metering, plug-in circuit breakers, and load centers. It details features, specifications, catalog number logic, dimensions, wiring diagrams, and knockout diagrams for various models.</p>
	<p>Siemens SN1224L1125 Indoor Load Center: Safety and Installation Guide</p> <p>Essential safety warnings, installation guidelines, and technical specifications for the Siemens SN1224L1125 Indoor Load Center, a Plug-On Neutral Ready Type 1 electrical panel.</p>



[Siemens WL Circuit Breakers: Selection and Application Guide](#)

Comprehensive guide to Siemens WL Low Voltage Circuit Breakers, covering selection, application, features, specifications, and accessories for UL489 and UL1066 listed products.



[Siemens Load Centers & Circuit Breakers: PL & ES Series Product Catalog](#)

Explore the Siemens SPEEDFAX™ 2017 catalog section detailing PL and ES Series Load Centers, WireGuide™ Load Centers, and Circuit Breakers. Find product features, specifications, and cataloging information for electrical distribution solutions.