

## Sauder 424811

# Sauder Palladia L-Shaped Desk (Model 424811) Instruction Manual

Comprehensive guidelines for assembly, operation, and maintenance.

## 1. PRODUCT OVERVIEW

The Sauder Palladia L-Shaped Desk, Model 424811, is designed to provide an organized and functional workspace. This desk features a spacious L-shaped top surface, multiple storage drawers including a file drawer, a flip-down keyboard/laptop tray, and a dedicated CPU tower storage area. It is constructed from engineered wood with a Split Oak finish.



Image 1.1: The Sauder Palladia L-Shaped Desk, showcasing its overall design and Split Oak finish.

## 2. SAFETY INFORMATION

Adherence to the following safety guidelines is crucial for safe use and to prevent injury or damage:

- Always assemble the desk according to the provided instructions.
- Ensure the desk is properly anchored to the wall or floor to prevent tipping, if applicable.
- Exercise caution when operating the flip-down panel drawer and file drawer to prevent entrapment.
- Secure heavy items within the CPU tower storage area to maintain stability and prevent tipping.

- Keep the desk away from direct heat sources.
- Avoid placing excessively heavy objects on the desk that could compromise its stability.

### 3. PACKAGE CONTENTS

Before beginning assembly, verify that all components are present. The package includes:

- All necessary furniture materials (engineered wood panels, drawer components, etc.)
- Required hardware (screws, cam locks, dowels, drawer glides, handles, etc.)
- Detailed assembly instructions booklet.

If any parts are missing or damaged, contact customer support immediately.

### 4. ASSEMBLY INSTRUCTIONS

Assembly of the Sauder Palladia L-Shaped Desk requires careful attention to detail. It is recommended to have ample space for assembly and to work with a partner for certain steps.

#### 4.1 Tools Required

- Hammer
- Phillips Head Screwdriver (do not use power drills to avoid stripping engineered wood)

#### 4.2 General Assembly Tips

1. Unpack all components and organize them by part number or type.
2. Follow the included instruction booklet step-by-step. Do not skip steps.
3. Ensure all cam locks and screws are tightened securely but do not overtighten.
4. When joining the two L-shaped sections, ensure proper alignment. Assistance from another person is highly recommended for this step.
5. Adjust drawer slides as needed to ensure smooth operation and proper alignment of drawers.

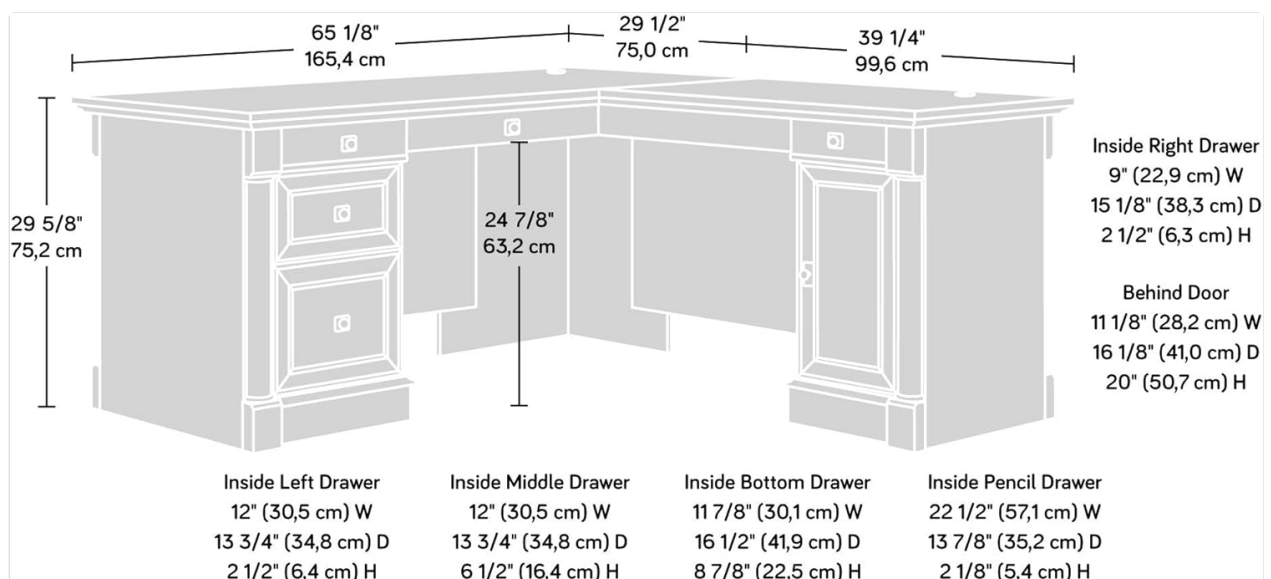


Image 4.1: Desk dimensions and internal storage measurements for planning and assembly.

### 5. OPERATING FEATURES

The Sauder Palladia L-Shaped Desk incorporates several features designed for functionality and organization:

- **Flip-Down Keyboard/Laptop Tray:** A central drawer features a flip-down panel, providing convenient access for a keyboard or laptop.
- **File Drawer:** A dedicated file drawer accommodates both letter and legal-sized documents, ensuring important papers are organized.
- **Additional Storage Drawers:** Multiple drawers offer space for office supplies and personal items.
- **CPU Tower Storage:** A storage compartment behind a door is designed to house a vertical CPU tower, keeping it out of sight and protecting it.
- **Cable Management:** Integrated grommets on the desktop allow for organized routing of power and data cables, reducing clutter.



Image 5.1: The flip-down panel drawer, ideal for keyboard or laptop storage.





Image 5.2: The file drawer, designed for letter and legal-sized documents.



Image 5.3: Cable management grommet for routing wires neatly.

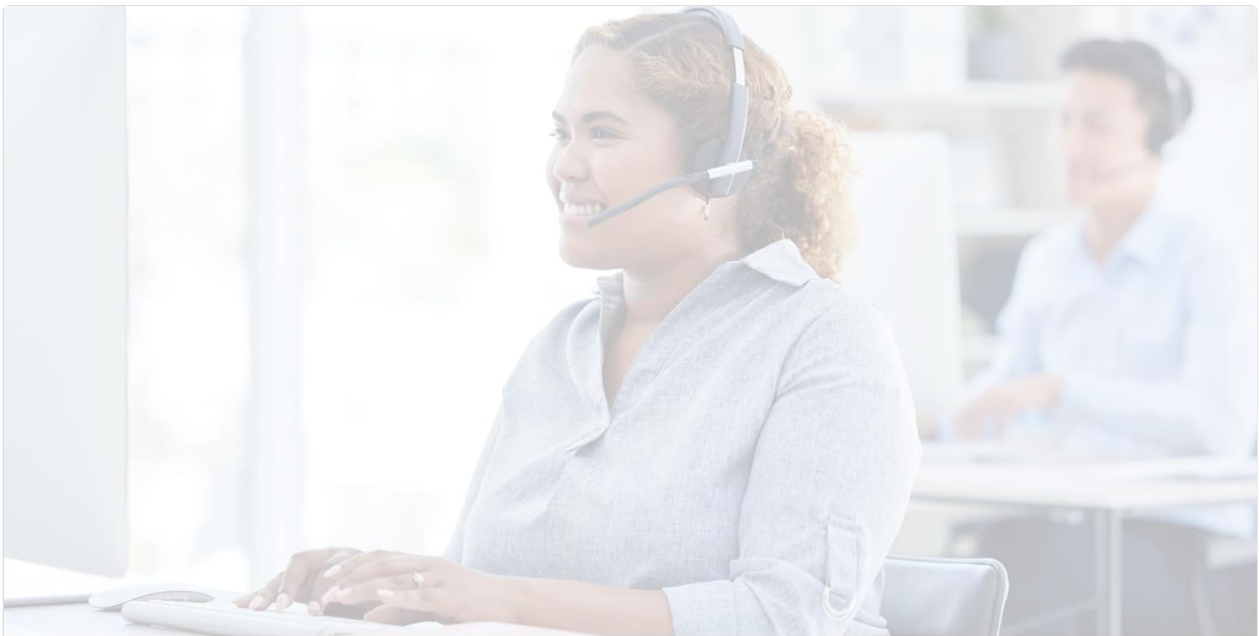
## 6. CARE AND MAINTENANCE

---

To ensure the longevity and appearance of your Sauder Palladia L-Shaped Desk, follow these care instructions:

- Wipe surfaces with a soft, damp cloth. Avoid abrasive cleaners or harsh chemicals.
- Promptly clean up spills to prevent staining or damage to the finish.
- Avoid placing hot items directly on the desk surface; use coasters or protective pads.
- Periodically check all hardware connections and tighten if necessary to maintain structural integrity.
- Protect the desk from prolonged exposure to direct sunlight or extreme temperature changes.





## DOMESTIC CALL CENTER READY TO ASSIST.

[sauder.com/service](https://sauder.com/service)

800-523-3987

Image 6.1: Detail of the Split Oak finish, highlighting its texture and appearance.

### 7. TROUBLESHOOTING

---

This section addresses common issues that may arise during or after assembly:

- **Sticky or Misaligned Drawers:** If drawers do not slide smoothly or appear misaligned, check the installation of the drawer glides. Adjustments can often be made to the screws on the glides to correct alignment. Ensure no debris is obstructing the tracks.
- **Desk Sections Not Lining Up:** If the two L-shaped sections do not align perfectly, re-check the connection points and ensure all hardware is properly seated and tightened. Minor adjustments may be needed.
- **Missing or Damaged Parts:** Refer to the customer support section for instructions on obtaining replacement parts.
- **Wobbling:** Ensure all cam locks and screws are fully tightened. Verify the desk is on a level surface.



Image 7.1: Detail of the drawer glide mechanism, which can be adjusted for smooth drawer operation.

## 8. PRODUCT SPECIFICATIONS

Brand	Sauder
Model Number	424811
Product Dimensions (D x W x H)	68.75" x 65.13" x 29.63"
Color	Split Oak
Base Material	Engineered Wood
Finish Type	Split Oak finish
Item Weight	250 Pounds
Number of Drawers	4
Maximum Weight Recommendation	350 Pounds

Required Assembly	Yes
Recommended Number of People for Assembly	1 (2 recommended for ease)

## 9. WARRANTY INFORMATION

The Sauder Palladia L-Shaped Desk is covered by a **5-year limited warranty**. This warranty covers parts and manufacturing defects. For specific details regarding coverage and claims, please refer to the warranty documentation included with your product or contact Sauder customer support.

## 10. CUSTOMER SUPPORT

For assistance with assembly, missing parts, or any other inquiries, please contact Sauder customer support:

- **Website:** [sauder.com/service](https://sauder.com/service)
- **Phone:** 800-523-3987

Sauder's domestic call center is available to assist you.

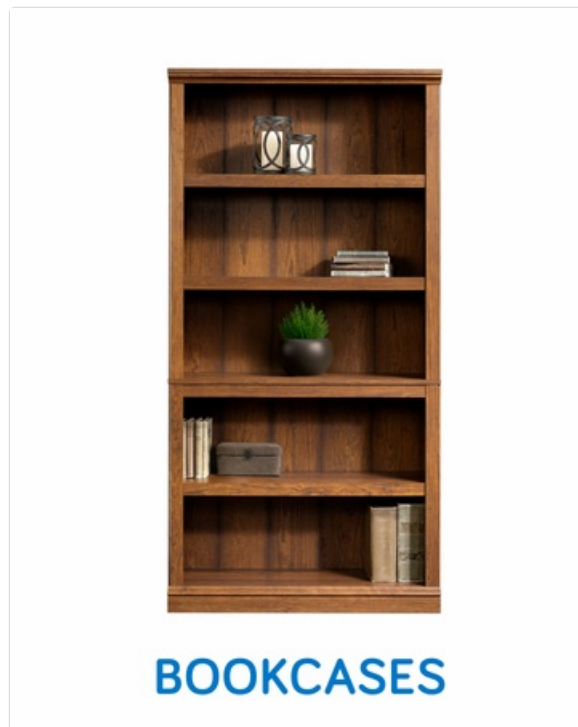


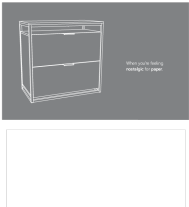





Image 10.1: Sauder customer support information.

## 11. VIDEO RESOURCES

While specific instructional videos are not available in this manual, Sauder may offer assembly tip videos and other helpful resources on their official website or product pages. Please visit [sauder.com/service](https://sauder.com/service) for additional support.



	<p><a href="#">Sauder L-Desk (Model 420606) Assembly Instructions</a></p> <p>Comprehensive assembly guide for the Sauder L-Desk, Palladia Collection (Model 420606), including part identification, hardware details, and step-by-step instructions.</p>
	<p><a href="#">Sauder L-Shaped Desk (Model 425773) Assembly Instructions</a></p> <p>Comprehensive assembly guide for the Sauder L-Shaped Desk, Model 425773, from the Rock Glen Collection. Includes part identification, hardware list, step-by-step instructions, and safety information.</p>
	<p><a href="#">Sauder 428211 Lateral File Cabinet Assembly Instructions</a></p> <p>Comprehensive assembly guide for the Sauder 428211 Lateral File Cabinet, featuring detailed part identification, hardware lists, step-by-step instructions, and safety precautions.</p>
	<p><a href="#">Sauder L-Desk Assembly Instructions - Model 423976</a></p> <p>This document provides assembly instructions and product information for the Sauder L-Desk, Model 423976, from the Steel River Collection. It includes detailed steps, part identification, safety warnings, and warranty information in English, French, and Spanish.</p>
	<p><a href="#">Sauder Lateral File Assembly Instructions   Heritage Hill Collection 102702</a></p> <p>This document provides comprehensive assembly instructions and safety guidelines for the Sauder Lateral File, Heritage Hill Collection (Model 102702). It includes detailed part identification, hardware lists, and step-by-step assembly guidance to help users build their furniture.</p>
	<p><a href="#">Sauder Executive Desk Model 402159 Assembly Instructions</a></p> <p>Detailed assembly instructions for the Sauder Executive Desk, Model 402159, including part identification, hardware list, step-by-step assembly guidance, and safety information. This guide helps users assemble their furniture correctly and safely.</p>