



[Manuals.plus](#) /

› [PUREPLUS](#) /

› PUREPLUS CRF-950Z Replacement Water Filter Instruction Manual

## PUREPLUS CRF-950Z

# PUREPLUS CRF-950Z Water Filter Instruction Manual

Model: CRF-950Z | Brand: PUREPLUS

## 1. INTRODUCTION

Thank you for choosing the PUREPLUS CRF-950Z Replacement Water Filter. This filter is designed to provide clean, great-tasting water by effectively reducing various contaminants. This manual provides essential information for the proper installation, operation, and maintenance of your new water filter.

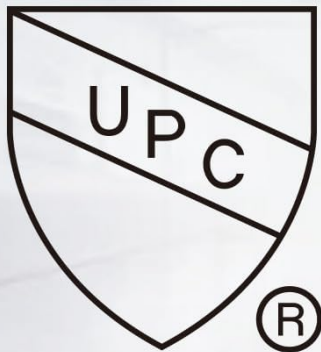


Image: PUREPLUS CRF-950Z water filter 3-pack with packaging, showing the product and its box.

## Product Features

- **Certified Quality:** Utilizes NSF certified activated carbon, filtering 99% of chlorine, lead, and mercury. Food-grade materials comply with European regulations EC1935-2004, Australian watermark, TUV, RoHS, REACH, and are BPA-free.
- **Efficient Filtration:** High-quality filtration media combining activated carbon particles and advanced ion-exchange resin effectively removes 99% of chlorine and odors, 99% of heavy metals, and reduces over 100 contaminants including limescale, sediment, and rust.
- **Innovative Technology:** Multi-layer technology ensures different levels of filtration efficiency for various harmful substances. The advanced structure provides stable and continuous water flow.

# CERTIFIED FOR QUALITY



Certified by IAPMO R&T against [NSF/ANSI 42](#) standard for material safety, structural integrity and aesthetic chlorine reduction when used in the CRF-950Z. Replacement component CRF-950Z certified by IAPMO R&T to [NSF/ANSI/CAN 372](#) standard for Lead free compliance.

## How to find IAPMO Certification Information?

STEP 1: Go to <http://pld.iapmo.org>.

STEP 2: Select "Listee Name" and enter "AQUAZON" for searching.

STEP 3: Find this model "CRF-950Z" in the listed projects.

Image: IAPMO R&T certification logo, indicating compliance with NSF/ANSI 42 and NSF/ANSI/CAN 372 standards for material safety and chlorine reduction.

# PREMIUM MATERIALS

## COCONUT SHELL

ACTIVATED

CARBON &

LEAD-FREE MATERIALS



Image: Coconut shells and activated carbon, illustrating the premium, lead-free materials used in the filter construction.

## 2. SETUP AND INSTALLATION

The PUREPLUS CRF-950Z filter is designed for easy and quick installation, typically taking only a few seconds without the need for any tools.

### Installation Steps:

1. **Prepare the Filter:** Remove the new filter from its packaging. It is recommended to rinse the filter under cold tap water for 15 seconds to remove any carbon dust.
2. **Remove Old Filter:** If replacing an existing filter, carefully remove the old filter from your PUR pitcher or dispenser.
3. **Insert New Filter:** Align the new PUREPLUS CRF-950Z filter with the opening in your pitcher or dispenser.

Firmly press and twist the filter into place until it is securely seated. Ensure a snug fit to prevent leaks.

4. **Initial Flush:** Fill the pitcher/dispenser with water and allow it to filter through. Discard the first two full pitchers of filtered water to prime the filter and remove any remaining carbon fines.

The filter is designed to fit perfectly and provide a leak-free experience.

# EASY INSTALL

## FITS PERFECTLY, INSTALLS IN 3 SECONDS



**Easy Installation**



**No tools required**



**Leak free**

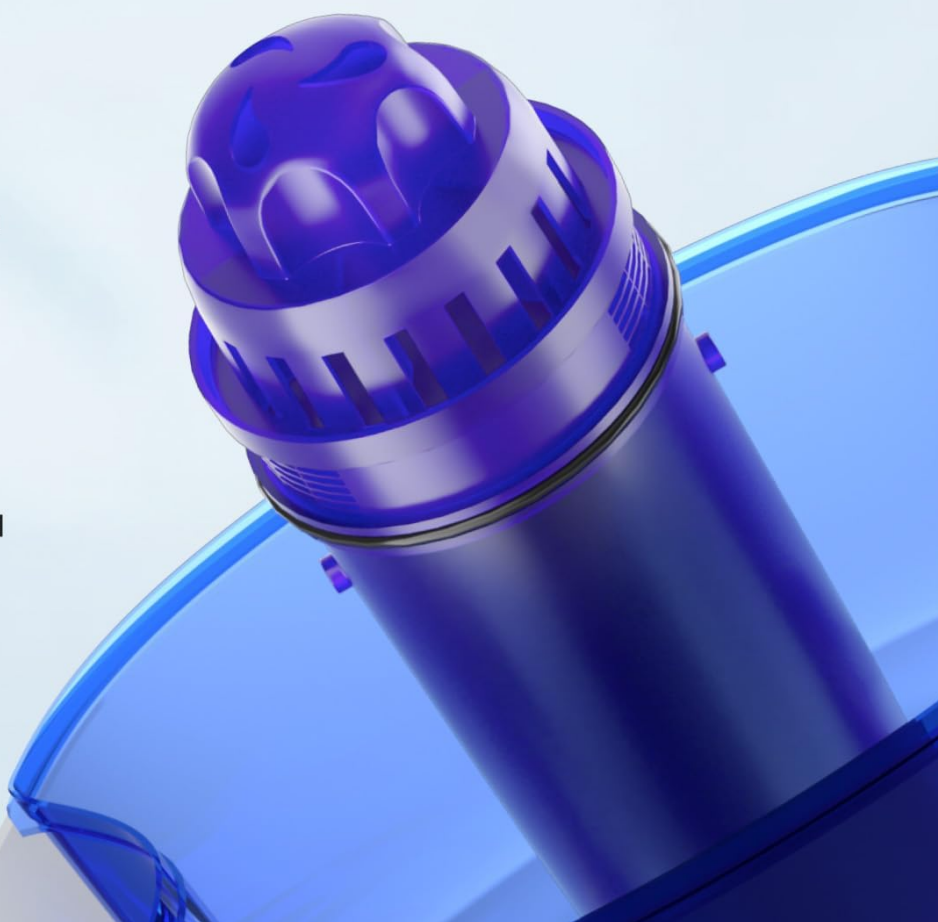


Image: Close-up view of the PUREPLUS filter being inserted into a water pitcher, demonstrating its easy, tool-free, and leak-free installation.

### 3. OPERATING INSTRUCTIONS

Once installed, the PUREPLUS CRF-950Z filter operates automatically as water passes through it. Simply fill your pitcher or dispenser with tap water, and the filter will begin the purification process.

#### **Filtration Process:**

The filter utilizes an advanced multi-stage filtration technology to purify your water:

- **Sediment Filter Layers:** These layers remove larger particles such as sand, rust, and sediment.
- **Ion Exchange Materials:** These materials are crucial for reducing heavy metals like lead and mercury, and also help in reducing limescale.
- **Granulated Activated Carbon:** This component effectively absorbs chlorine, odors, and other organic impurities, significantly improving the taste of the water.
- **Mesh Screen:** Acts as a final barrier to ensure no media particles are released into the filtered water.



Image: Diagram illustrating the internal multi-stage filtration process, including sediment filter layers, ion exchange materials, and granulated activated carbon.

### Contaminants Reduced:

The PUREPLUS CRF-950Z filter is designed to reduce over 100 contaminants, including but not limited to:

- Chlorine
- Taste & Odor
- Sand

- Sediment
- Rust
- Suspended Solids
- Impurities
- Large Particles

# ELIMINATES 100+

## CONTAMINANTS



Chlorine



Taste & Odor



Sand



Sediment



Rust



Suspended Solids



Impurities



Large Particles



Image: Visual representation of various contaminants that the filter effectively eliminates, such as chlorine, sand, rust, and impurities.

## 4. MAINTENANCE

Regular filter replacement is essential to ensure optimal performance and continued water quality.

### Filter Replacement Frequency:

It is recommended to replace your PUREPLUS CRF-950Z filter every **2 months** or after filtering **40 gallons** of

water, whichever comes first. This frequency may vary depending on your water quality and usage habits.



# EXTENDED LIFESPAN

UP TO  
**40** GALLONS

ENJOY CLEAN WATER LONGER

Image: Water being poured from a pitcher, illustrating the filter's capacity to purify up to 40 gallons of water.

## Storage:

Store unused filters in a cool, dry place away from direct sunlight. Do not store filters in freezing temperatures.

## 5. TROUBLESHOOTING

If you experience any issues with your PUREPLUS CRF-950Z filter, please refer to the common issues below. If the problem persists, contact PUREPLUS customer support.

### Common Issues:

- **Slow Filtration:** This can occur if the filter is clogged or nearing the end of its lifespan. Ensure the filter has

been properly primed by discarding the first two pitchers of water. If the issue persists, replace the filter.

- **Water Taste/Odor:** If the filtered water still has an undesirable taste or odor, the filter may need to be replaced, or it might not have been properly primed. Ensure the filter is securely installed.
- **Leaking:** Ensure the filter is firmly twisted and seated correctly in the pitcher or dispenser. If the leak continues, check for any damage to the filter or the pitcher/dispenser seal.

## 6. SPECIFICATIONS

Attribute	Detail
Brand	PUREPLUS
Model Number	CRF950Z
Package Dimensions	18.9 x 18.49 x 6.4 cm
Item Weight	408 grams
Spare Parts Availability	Information unavailable

## 7. COMPATIBLE MODELS

The PUREPLUS CRF-950Z filter is compatible with the following PUR filter models, pitchers, and dispensers:

### Compatible PUR Filter Models:

- CRF-950Z
- PPF951K
- PPF900Z

### Compatible PUR Pitchers and Dispensers:

- PPT700W
- CR-1100C
- DS-1800Z
- CR-6000C
- PPT711W
- PPT711
- PPT710W
- PPT11W
- PPT11R
- DS1811Z

- CR1100CV3

## 8. WARRANTY AND SUPPORT

For any questions, concerns, or support regarding your PUREPLUS CRF-950Z water filter, please contact PUREPLUS customer service. Refer to the product packaging or the official PUREPLUS website for contact information and details regarding any applicable warranty.