



[Manuals.plus](#) /

> [IRIS OHYAMA](#) /

> IRIS OHYAMA Countertop Dishwasher and Dryer User Manual - Model PZSH-5T-W

## IRIS OHYAMA PZSH-5T-W

# IRIS OHYAMA Countertop Dishwasher and Dryer User Manual

Model: PZSH-5T-W

## IMPORTANT SAFETY INFORMATION

---

Please read all instructions carefully before using the appliance. Keep this manual for future reference.

- Always ensure the appliance is properly grounded to prevent electrical shock.
- Do not immerse the appliance, cord, or plug in water or other liquids.
- Supervise children when the appliance is in use.
- Use only detergents specifically designed for dishwashers.
- Do not open the door during operation, especially during hot water cycles.
- Ensure proper ventilation around the appliance.

## PRODUCT OVERVIEW

---

The IRIS OHYAMA PZSH-5T-W is a compact, tank-type countertop dishwasher and dryer designed for easy use without the need for complex installation. It features a powerful cleaning system and multiple wash cycles to ensure your dishes are thoroughly cleaned and dried.



Figure 1: Front view of the IRIS OHYAMA PZSH-5T-W Dishwasher with dishes loaded.

## SETUP

### Unpacking and Placement

Carefully remove the dishwasher from its packaging. Place the unit on a stable, level surface in your kitchen. This tank-type dishwasher does not require plumbing installation, making it ready for immediate use.

## 工事不要ですぐに使える

タンク式だから水道工事不要！  
キッチンに置いてすぐに使えます。

※アースは必ず接続してください。



Figure 2: The dishwasher placed on a kitchen counter, illustrating its installation-free design.

### Connecting Power and Water

- Plug the power cord into a grounded AC100V (50/60Hz) outlet. Ensure the earth connection is properly made.
- Fill the water tank using the provided water cup and funnel. The tank capacity is approximately 5 liters.
- Connect the drain hose to the designated outlet on the unit. Note that the drain hose connection is only on one side. Position the other end of the drain hose into a sink or suitable drainage area.

### Included Components

- Dish rack
- Small item basket
- Drain hose
- Water supply cup
- Funnel

## OPERATING INSTRUCTIONS

### Loading Dishes

Arrange dishes in the rack, ensuring they do not block the rotating upper and lower spray nozzles. The standard capacity is 15 items (e.g., 2 large plates, 2 medium plates, 2 small plates, 2 small bowls, 2 teacups, 2 soup bowls, 3 cups, plus small items like chopsticks and spoons).

### Adding Detergent

Add approximately 6g of dedicated dishwasher detergent to the detergent dispenser.

### Selecting a Wash Course

Choose a wash course based on the type of dishes and level of dirt. The unit features a rotating nozzle spray washing method and an accumulated rinse method, followed by air drying.

## 洗い物に合わせて選べる洗浄コース

使用用途や食器の種類、汚れ具合などによって  
洗浄コースを変えることができます。



コース	こんなとき	時間の目安	ドライキープ (1時間)	ドライキープ延長 (4時間)
標準	食後すぐに洗うときや通常のご使用時	1時間30分		
念入り	食後から時間が経過したものや、調理器具などを洗う時	2時間10分	あり	あり
ソフト	プラスチック製の食器を洗うとき、耐熱温度65°C~90°C未満のものを洗う時	1時間45分		
お急ぎ	汚れが軽いもの、つけおきや水洗いの後のものを洗う時	39分	なし	なし

Figure 3: Control panel with various wash course options and estimated times.

#### Wash Course Guide

Course	Description	Approx. Time	Dry Keep (1hr)	Dry Keep (4hr)
Standard	For immediate washing after meals or regular use.	1 hr 30 min	Yes	Yes
Intensive	For dishes left for a while or cooking utensils.	2 hr 10 min	Yes	Yes

Course	Description	Approx. Time	Dry Keep (1hr)	Dry Keep (4hr)
Soft	For plastic dishes or items resistant to temperatures below 65°C-90°C.	1 hr 45 min	No	No
Quick	For lightly soiled items or after pre-soaking.	39 min	No	No

## Reservation Function

The reservation function allows you to set a delayed start time, which can be useful for utilizing off-peak electricity hours to save on costs.

## Starting the Cycle

Press the 'Start' button to begin the selected wash cycle. The standard course duration is approximately 1 hour and 30 minutes, including washing, rinsing, and air drying.

## MAINTENANCE

---

### Cleaning and Sterilization

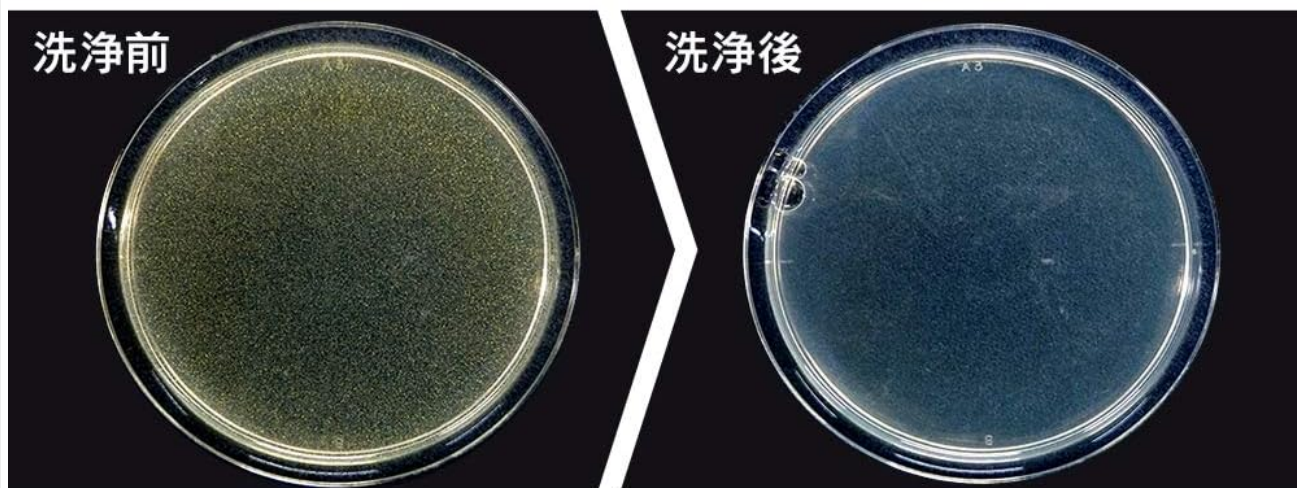
The dishwasher provides sterilization and drying functions to maintain hygiene. Warm water washing effectively sterilizes dishes, and the air drying function helps prevent re-condensation inside the unit.



# 除菌 & 乾燥

## いつでも清潔!

温水洗浄でしっかり除菌し、  
送風乾燥で庫内の再結露を抑制します。



試験機関：一般社団法人ボークン品質評価機構

試験方法：寒天平板培養法/除菌の方法：高温洗浄水噴射方式

除菌の対象：庫内食器類/試験結果：菌の減少率99%以上。(1種類の菌でのみ実施)

試験成績書発行年月日：2020年5月29日 試験成績書発行番号：3502000302

除菌効果は食器の量や位置、汚れの程度により異なります。

Figure 4: Illustration of sterilization effectiveness, showing a significant reduction in bacteria after washing.

Test results from a general incorporated association Boken Quality Evaluation Mechanism confirm over 99% reduction in bacteria (tested with one type of bacteria) using high-temperature washing and spray method. Test report issued: May 29, 2020. Report number: 3502000302. Sterilization effect varies depending on the amount of dishes and degree of dirt.

## Regular Cleaning

- Regularly clean the filter to ensure optimal performance.
- Wipe down the interior and exterior of the appliance with a damp cloth.
- Ensure the drain hose is clear of blockages.

## TROUBLESHOOTING

If you encounter issues with your dishwasher, refer to the following common problems and solutions:

- **Appliance not starting:** Check if the power cord is securely plugged in and the power switch is on. Ensure the door is fully closed.
- **Dishes not clean:** Verify that dishes are loaded correctly and not blocking spray arms. Ensure sufficient detergent is used. Check if the filter is clean.
- **Water not filling:** Ensure the water tank is adequately filled. Check for any error codes on the display.

- **Excessive noise:** Some operational noise is normal. However, if the noise is unusually loud or accompanied by strong vibrations, ensure the appliance is on a stable, level surface and not touching other objects. Check for any loose items inside the dishwasher.
- **Cloudy glass:** This can sometimes be due to hard water or incorrect detergent dosage. Try adjusting detergent amount or using a rinse aid if available.
- **Water remaining in the unit:** Ensure the drain hose is properly positioned and not kinked or blocked.

If the problem persists after attempting these solutions, please contact IRIS OHYAMA customer support.

## SPECIFICATIONS

Below are the technical specifications for the IRIS OHYAMA PZSH-5T-W Dishwasher:

### 商品仕様

単位：(約)cm

質量	13.0kg(本体、かご、小物入れ)
電源コードの長さ	約2m
付属品	かご、小物入れ、排水ホース、給水カップ、漏斗

Figure 5: Product dimensions (Width: 44.5cm, Depth: 42cm, Height: 43.5cm).

Feature	Specification
Brand	IRIS OHYAMA
Model Number	PZSH-5T-W

Feature	Specification
Product Type	Dishwasher and Dryer
Installation Type	Countertop (Tank Type, No Installation Required)
Dimensions (D x W x H)	Approx. 42 cm x 44.5 cm x 43.5 cm
Weight (Main unit, basket, small item holder)	Approx. 13 kg
Power Supply	AC100V (50/60Hz common)
Rated Power Consumption	512W / 526W
Power Cord Length	Approx. 2 m
Tank Capacity	Approx. 5 L
Washing Method	Rotating Nozzle Spray Type
Rinsing Method	Accumulated Rinse
Drying Method	Air Drying
Standard Storage Capacity	15 items
Standard Detergent Usage	Approx. 6 g
Standard Course Time (Wash, Rinse, Air Dry)	Approx. 1 hour 30 minutes
Control Type	Touch
Color	White
Finish Type	Gloss
Special Features	Compact, Reservation Function

Note: Actual power consumption and operation time may vary depending on the washing course, water temperature, and other environmental factors.

## WARRANTY AND SUPPORT

---

### Manufacturer's Warranty

This product comes with a **1-year manufacturer's warranty** from the date of purchase. Please retain your proof of purchase for warranty claims.

### Customer Support

For technical assistance, warranty service, or any questions regarding your IRIS OHYAMA PZSH-5T-W dishwasher, please contact IRIS OHYAMA customer support. Refer to the contact information provided in your product packaging or on the official IRIS OHYAMA website.