



Manuals.plus /

› Addtam /

› Addtam Surge Protector Wall Mount with 12 Outlet Extender and 3 USB Ports (1 USB-C), Model AD5008 Instruction Manual

## Addtam AD5008

# Addtam Surge Protector Wall Mount (Model AD5008) - Instruction Manual

Model: AD5008 | Brand: Addtam

## INTRODUCTION

---

This manual provides essential instructions for the safe and efficient use of your Addtam Surge Protector Wall Mount, Model AD5008. This device is designed to expand your power outlets and protect your electronic devices from power surges. It features 12 AC outlets, 2 USB-A ports, and 1 USB-C port.



USB TOTAL 3.1A

USB C

Addtam

  
SURGE PROTECTED

Image: Front view of the Addtam Surge Protector Wall Mount, showing the 12 AC outlets and 3 USB ports.

## SAFETY INFORMATION

---

Please read and understand all safety instructions before using this product. Failure to follow these instructions may result in electric shock, fire, or serious injury.

- Do not exceed the maximum power rating of 1875W (15A, 125V).
- This device is for indoor use only. Do not expose to moisture or extreme temperatures.
- Do not disassemble or modify the unit. Refer all servicing to qualified personnel.
- Ensure the surge protector is securely mounted to a wall outlet before connecting devices.
- The "Surge Protected" indicator light confirms active surge protection. If this light is off, the surge protection feature is no longer active, and the unit should be replaced.
- This power strip includes overload protection, short-circuit protection, over-current protection, over-voltage protection, and overheating protection.

# Superior Safety Features



Short-Circuit  
Protection



Over-Voltage  
Protection



Over-Current  
Protection



Over Heating  
Protection



1382°F  
Fire-resistance

Image: Diagram showing the internal components and various safety features like short-circuit, over-voltage, over-current, overheating protection, and fire-resistance.

## SETUP INSTRUCTIONS

1. **Identify Outlet Type:** Determine if your wall outlet is a standard outlet, a decorator outlet, or a GFCI/USB receptacle outlet.
2. **Prepare Stabilizing Rod (if necessary):** The Addtam Surge Protector includes a stabilizing rod for secure

mounting. For GFCI and USB receptacle outlets, the white stabilizing rod on the back of the unit may need to be cut off to ensure proper fit. For standard and decorator outlets, the rod can remain.

3. **Mount the Unit:** Align the prongs of the surge protector with the top receptacle of your wall outlet. Insert the prongs firmly into the outlet.
4. **Secure with Screw:** Use the provided mounting screw to secure the surge protector to the wall outlet's center screw hole. This ensures stability and prevents accidental dislodgement.
5. **Verify Surge Protection:** Once plugged in, the "Surge Protected" indicator light on the front of the unit should illuminate green, indicating that the surge protection is active.



directly into these outlets.

- **USB-A Ports:** Two USB-A charging ports are located on the top of the unit. These ports deliver up to 2.4A per port for charging compatible devices.
- **USB-C Port:** One USB-C charging port is located on the top of the unit. This port delivers up to 3A for faster charging of compatible USB-C devices.
- **Smart Charging:** The USB ports automatically detect connected devices and deliver optimal charging speed.
- **Phone Holder:** The top surface of the unit includes a design that can function as a phone holder, allowing you to conveniently place your smartphone while it charges.

# 15 IN 1 & 4 Side Design



12 AC Outlets



1 USB-C Ports



2 USB-A Ports



4-Side Design



Image: Visual representation of the 12 AC outlets, 1 USB-C port, and 2 USB-A ports, highlighting the 4-side design.

# Charge Up to 30% Faster



**MAX 15W**

USB -C 3A MAX

**MAX 12W**

USB -A 2.4A MAX

Image: Illustration detailing the maximum charging output for the USB-C (15W, 3A Max) and USB-A (12W, 2.4A Max) ports.

# Unique Design for the Phone Holder

## Enjoy your kitchen activity



Image: The surge protector mounted on a kitchen wall, demonstrating the phone holder feature with a smartphone charging.

### MAINTENANCE

To ensure optimal performance and longevity of your Addtam Surge Protector:

- Keep the unit clean and free from dust. Use a dry, soft cloth for cleaning.
- Do not use liquid cleaners or aerosols.

- Regularly check the "Surge Protected" indicator light. If it is off, the surge protection is no longer active, and the unit should be replaced to maintain protection for your devices.
- Avoid placing the unit in areas with high humidity or direct sunlight.

## TROUBLESHOOTING

Problem	Possible Cause	Solution
No power from AC outlets or USB ports.	Unit not properly plugged in; wall outlet is not active; internal overload protection triggered.	Ensure the unit is firmly plugged into a live wall outlet. Check the wall outlet with another device. Reduce the total load on the surge protector. If the issue persists, the unit may be faulty.
"Surge Protected" indicator light is off.	Surge protection has been compromised or expired.	The unit has absorbed a significant power surge and can no longer provide surge protection. Replace the surge protector to ensure continued protection for your devices.
USB devices not charging or charging slowly.	Device incompatibility; faulty USB cable; device requires more power than available; total USB current exceeded.	Ensure your device is compatible with USB charging. Try a different USB cable. Check if the device requires a specific charging protocol not supported. Reduce the number of devices charging simultaneously via USB.

## SPECIFICATIONS

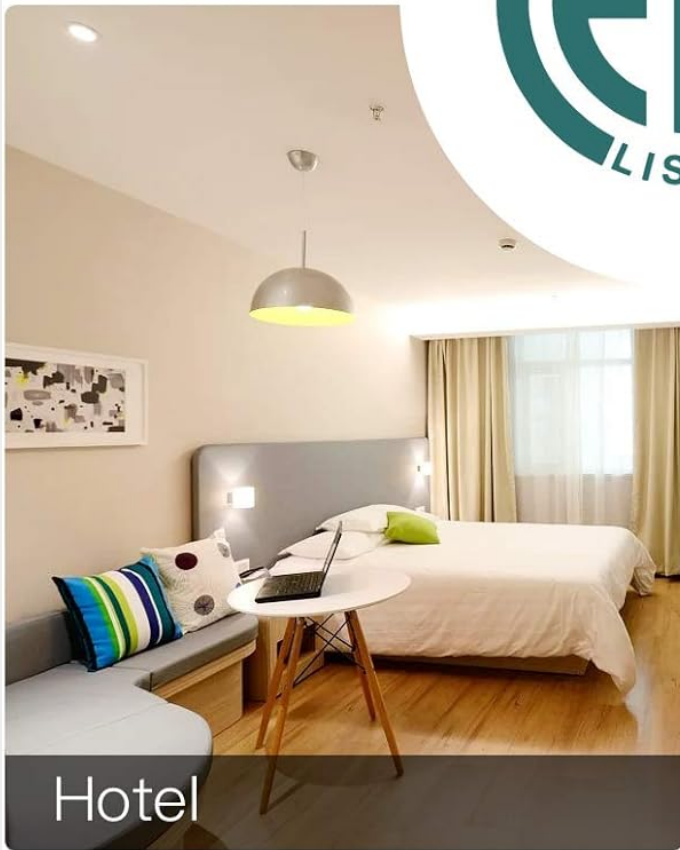
Feature	Detail
Model Number	AD5008
AC Outlets	12 (125V, 15A, 1875W Max)
USB-A Output	2 ports, up to 2.4A per port (12W Max)
USB-C Output	1 port, up to 3A (15W Max)
Total USB Output	5V/3.1A
Surge Protection	490 Joules (TVS, MOV, GDT)
Dimensions	3.94 x 3.94 x 0.04 inches
Item Weight	12 ounces
Special Features	Mountable, Surge Protection, USB Slots, Phone Holder
Certifications	ETL Listed



Living Room



Kitchen



Hotel



Office

Image: The ETL Listed certification logo, indicating product safety and compliance, surrounded by images of typical usage environments.

## WARRANTY AND SUPPORT

For warranty information or technical support, please refer to the contact details provided with your product packaging or visit the official Addtam website. Keep your purchase receipt for warranty claims.

