

[Manuals.plus](#) /

> [Cleer](#) /

> Cleer Audio Ally Plus II True Wireless Noise Canceling Earbuds Instruction Manual

Cleer ALLYPLUS2BTSTNUS

Cleer Audio Ally Plus II True Wireless Noise Canceling Earbuds Instruction Manual

Brand: Cleer | Model: ALLYPLUS2BTSTNUS

INTRODUCTION

The Cleer Audio Ally Plus II earbuds offer a premium audio experience with advanced noise-canceling capabilities. Designed for comfort and durability, these true wireless earbuds provide crystal-clear sound, extended battery life, and intuitive controls for seamless listening in various environments.

PACKAGE CONTENTS

- Cleer Audio Ally Plus II Earbuds
- Charging Case
- USB-C Charging Cable
- Silicone Ear Tips (XS, S, M, L, XL sizes)
- Quick Start Guide
- User Manual
- Warranty Card



Battery Life

Qi Wireless charging enabled

11hrs
On Full Charge

33hrs
With Charging
Case

Image: Cleer Audio Ally Plus II earbuds, charging case, and accessories as they appear in the box.

SETUP

1. Charging the Earbuds and Case

- Place the earbuds into the charging case. Ensure they are properly seated.
- Connect the USB-C charging cable to the case and a power source, or place the case on a Qi-compatible wireless charging pad.
- The indicator light on the case will show charging status. A full charge provides up to 11 hours of playback, with an additional 22 hours from the charging case (total 33 hours).



Image: The Cleer Audio Ally Plus II charging case being charged wirelessly, highlighting its 11 hours on full charge and 33 hours with the charging case.

2. Pairing with Your Device

- Open the charging case. The earbuds will automatically enter pairing mode.
- On your device (smartphone, tablet, etc.), go to Bluetooth settings and select "Cleer Ally Plus II" from the list of available devices.
- Once connected, you will hear an audio prompt confirming successful pairing.

3. Optimal Fit

- Choose the ear tips that provide the best seal and comfort for your ears. Experiment with different sizes (XS, S, M, L, XL) for optimal sound quality and noise cancellation.
- Gently insert each earbud into your ear canal and twist slightly to secure a snug fit.



Image: A person wearing the Cleer Audio Ally Plus II earbuds, showing how they fit comfortably and securely in the ear.

OPERATING INSTRUCTIONS

1. Touch Controls

The Ally Plus II earbuds feature intuitive touch controls on each earbud for managing audio playback, calls, and noise control modes.

- **Single Tap:** Play/Pause music, Answer/End call.
- **Double Tap:** Next track (right earbud), Previous track (left earbud), Toggle between Active Noise Cancellation and Ambient Mode.
- **Triple Tap:** Activate voice assistant.
- **Tap and Hold:** Adjust volume (customizable via Cleer+ App).

Intuitive Touch Control

Control volume, music playback, calls, voice assistant, and noise cancellation settings with touch buttons.

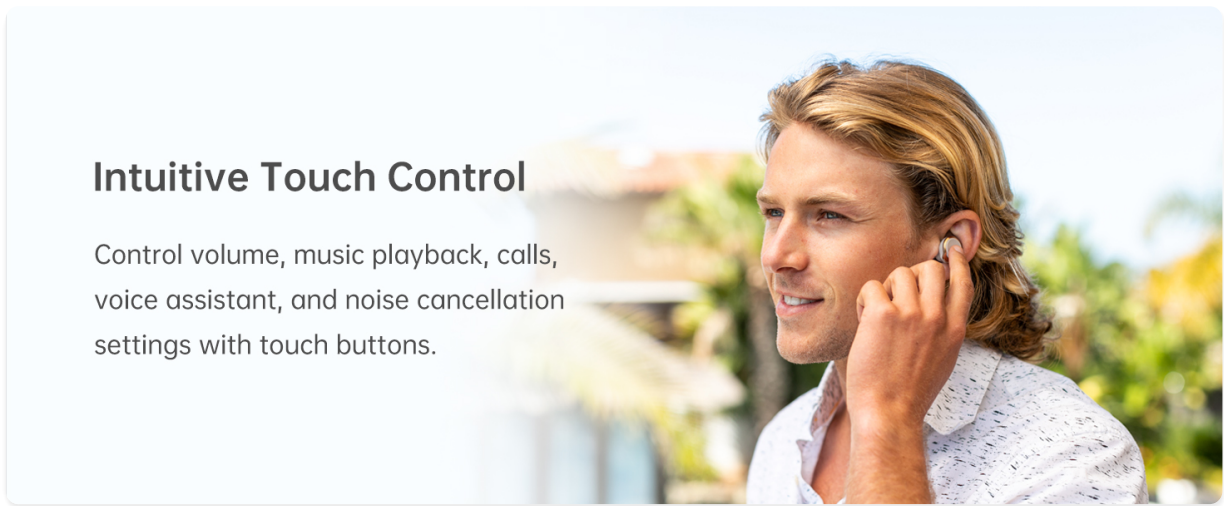


Image: A person interacting with the touch controls on the Cleer Audio Ally Plus II earbuds, demonstrating ease of use.

2. Cleer+ App Customization

Download the free Cleer+ App from the App Store or Google Play to unlock full customization options for your Ally Plus II earbuds.

- **Equalizer (EQ):** Customize your sound profile with preset or custom EQ settings.
- **Noise Control:** Adjust Active Noise Cancellation and Ambient Mode levels.
- **Touch Controls:** Personalize touch gestures for various functions.
- **Firmware Updates:** Keep your earbuds updated with the latest features and improvements.
- **Mimi Sound Personalization:** Tailor the sound reproduction to your unique hearing profile.



Image: The Cleer+ App displayed on a smartphone, illustrating the customizable equalizer and ambient noise control features for the Ally Plus II earbuds.

3. Noise Cancellation & Ambient Mode

- **Adaptive Active Noise Cancellation (ANC):** Automatically adjusts to your surroundings, minimizing unwanted ambient noise for an immersive listening experience.
- **Ambient Mode:** Allows external sounds to pass through, enabling you to stay aware of your surroundings or engage in conversations without removing your earbuds.

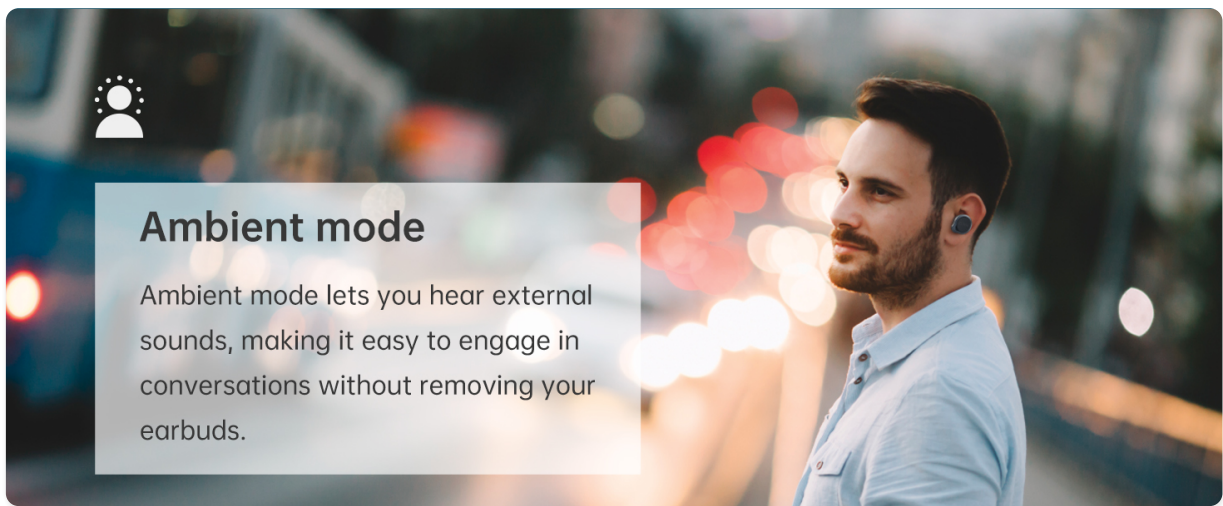


Image: A woman wearing Clear Audio Ally Plus II earbuds outdoors, demonstrating the effectiveness of adaptive noise cancellation in busy environments.

4. Crystal Clear Hands-Free Calling

With dual built-in Qualcomm cVc (Clear Voice Capture) microphones and advanced beamforming technology, the Ally Plus II enhances call quality by minimizing echo and background noise, ensuring clear voice transmission.

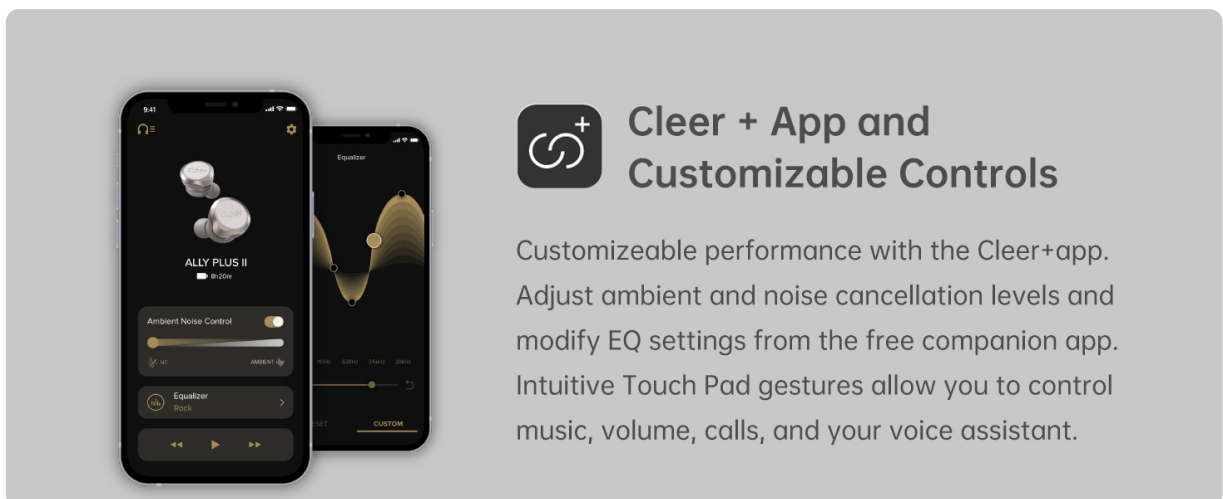


Image: A man smiling while engaged in a phone call, showcasing the clear hands-free calling feature of the Ally Plus II earbuds.

MAINTENANCE

Cleaning and Care

- The Ally Plus II earbuds are IPX4 certified, making them sweat and water resistant. However, they are not waterproof and should not be submerged in water.
- Regularly clean the ear tips and earbud surfaces with a soft, dry cloth to prevent wax buildup and maintain hygiene.
- Ensure the charging contacts on both the earbuds and the case are clean and dry before charging to prevent corrosion.

Powerful Sound

Cleer Acoustic Lab's custom-tuned 10mm dynamic graphene drivers deliver vibrant audio performance and powerful bass.

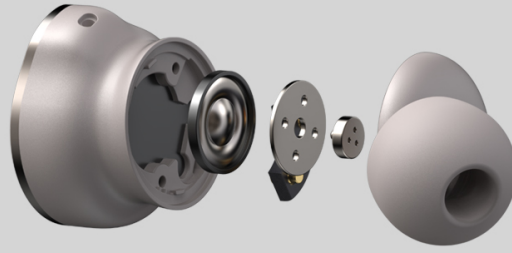


Image: A man engaged in a workout while wearing the Ally Plus II earbuds, emphasizing their IPX4 sweat-resistant design.

TROUBLESHOOTING

- **Earbuds not charging:** Ensure the plastic film is removed from the charging contacts on the earbuds. Verify the charging cable is securely connected or the case is properly placed on the wireless charger.
- **Connectivity issues:** Ensure Bluetooth is enabled on your device and the earbuds are within range. Try unpairing and re-pairing the earbuds.
- **App not connecting/pairing:** Some users may experience issues with the Cleer+ app staying in pairing mode. Ensure the app is updated to the latest version and try restarting both the app and your device.
- **Touch control sensitivity:** If touch controls are unresponsive or too sensitive, adjust settings within the Cleer+ App.
- **Sound quality/volume:** Use the Cleer+ App to adjust EQ settings to your preference. Ensure ear tips provide a good seal.
- **Feedback/echo during calls:** This can occur if Active Noise Cancellation is trying to cancel out your own voice. Adjust ANC levels or switch to Ambient Mode during calls if this becomes an issue.

SPECIFICATIONS

Feature	Detail
Brand	Cleer
Model Name	ALLYPLUS2BTSTNUS
Color	Stone
Ear Placement	In Ear
Noise Control	Active Noise Cancellation
Connectivity Technology	Wireless (Bluetooth 5.2)
Bluetooth Range	10 Meters

Audio Driver Type	Dynamic Driver
Audio Driver Size	10 Millimeters
Frequency Range	20 Hz - 20,000 Hz
Battery Life (Earbuds)	Up to 11 Hours
Battery Life (with Case)	Up to 33 Hours
Charging	USB-C, Wireless (Qi)
Water Resistance Level	IPX4 (Sweat and Water Resistant)
Microphones	Dual Qualcomm cVc (Clear Voice Capture)
Control Method	App, Media Control
Item Weight	0.07 Kilograms

WARRANTY AND SUPPORT

The Cleer Audio Ally Plus II earbuds come with a 1-year manufacturer's warranty. For technical support, troubleshooting assistance, or warranty claims, please visit the official Cleer Audio website or contact their customer service directly.

You can also find additional resources and FAQs on the [Cleer Store on Amazon](#).

OFFICIAL PRODUCT VIDEOS

Ally Plus II Overview

Your browser does not support the video tag.

Video: A concise overview of the Cleer Audio Ally Plus II earbuds, highlighting key features and design elements.

Ally Plus II in 4K

Your browser does not support the video tag.

Video: High-resolution 4K footage showcasing the design and aesthetics of the Cleer Audio Ally Plus II earbuds.

Cleer Audio Ally Plus II with Mimi Sound Personalization

Your browser does not support the video tag.

Video: Demonstrates the Mimi Sound Personalization feature available through the Cleer+ App, adapting sound to individual hearing profiles.