

WAC Lighting FM-214-CS-WT

WAC Lighting Glo 14-inch LED Energy Star Flush Mount Instruction Manual

Model: FM-214-CS-WT

1. IMPORTANT SAFETY INFORMATION

Please read and understand all instructions before beginning installation. Failure to follow these instructions may result in electric shock, fire, or other hazards that could cause property damage or personal injury.

- **WARNING:** This product can expose you to chemicals including Lead, which is known to the State of California to cause cancer and birth defects or other reproductive harm. For more information go to www.P65Warnings.ca.gov.
- Always disconnect power at the circuit breaker before installation or servicing.
- Consult a qualified electrician if you are unsure about the installation process.
- Ensure all electrical connections are made in accordance with local codes and ordinances.
- This fixture is rated for damp locations. Do not install in areas where it will be directly exposed to water.

2. PRODUCT OVERVIEW

The WAC Lighting Glo LED Flush Mount fixture is designed for general ambient lighting in various residential and commercial settings. It features an integrated LED light source with selectable color temperatures and dimming capabilities.



Image 2.1: Front view of the WAC Lighting Glo 14-inch LED Flush Mount fixture.

Key Features:

- **5-CCT Selectable Color Temperature:** Choose between 2700K (Warm), 3000K (Warm White), 3500K (White), 4000K (Cool White), and 5000K (Natural White).
- **Dimmable:** Compatible with most standard LED dimmers (electronic low voltage or TRIAC dimmers recommended).
- **Energy Efficient:** Integrated LED provides long-lasting, maintenance-free illumination. Energy Star Certified.
- **Universal Input Voltage:** Operates on 120V-240V-277V.
- **Damp Location Rated:** Suitable for installation in damp environments.

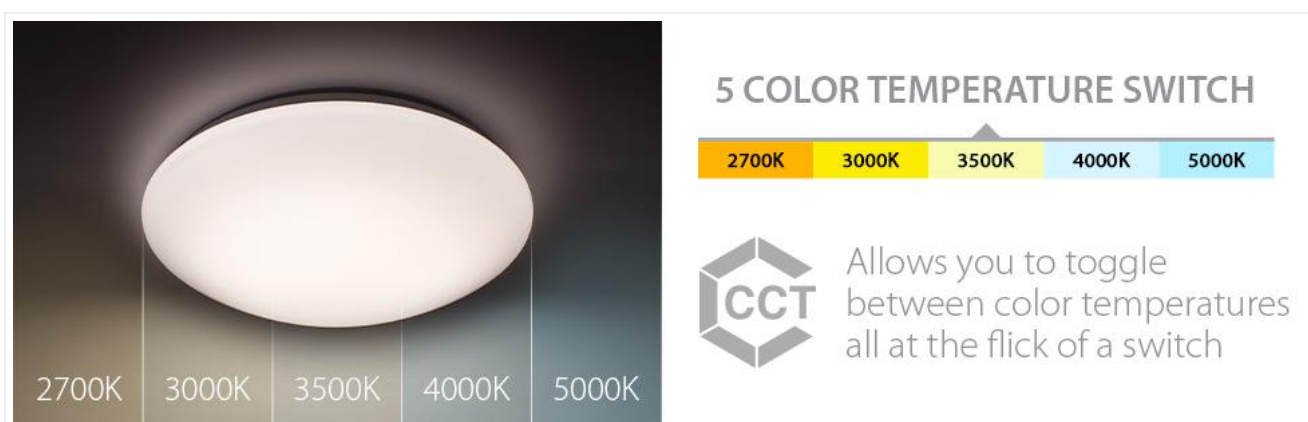


Image 2.2: Visual representation of the 5-CCT selectable color temperature switch.

3. PACKAGE CONTENTS

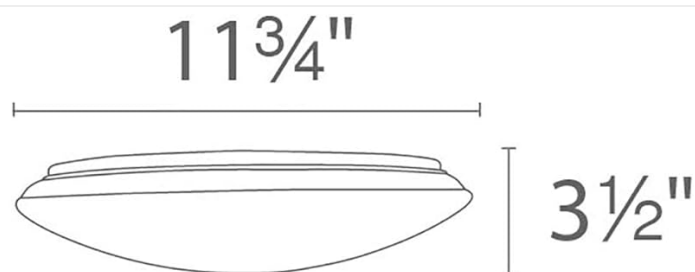
Verify that all components are present before beginning installation:

- LED Fixture (Glo 14-inch Flush Mount)
- Mounting Hardware
- Installation Instructions (this manual)

4. SPECIFICATIONS

Specification	Detail
Model Number	FM-214-CS-WT
Size	14 inches diameter
Dimensions	14.25 x 14.25 x 4 inches
Wattage	20 watts
Brightness	Up to 1735 Lumens
Color Temperature	2700K, 3000K, 3500K, 4000K, 5000K (Selectable)
Voltage	120V-240V-277V
Material	Aluminum housing, Acrylic diffuser
Finish	Painted White
Certifications	Energy Star 2.0 Certified, cUL/ETL Damp Location Listed, Title 24 JA8-2016, Title 20, ADA Compliant
Rated Lifetime	50,000 hours (LM70)

FM-211



FM-214



FM-216

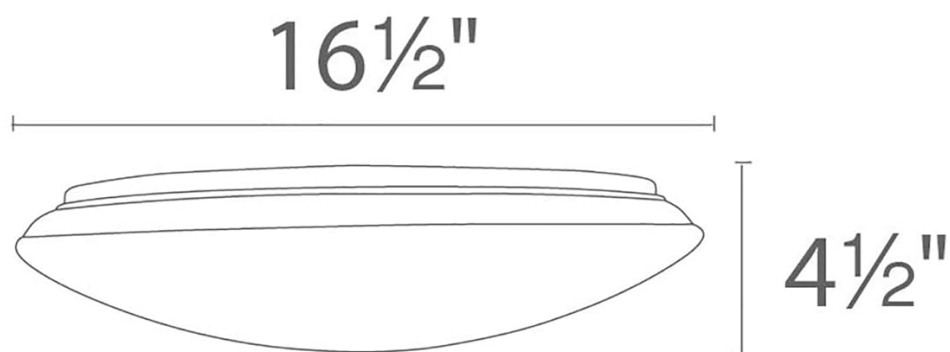


Image 4.1: Dimensional drawing showing the 14-inch fixture (FM-214) with a 4-inch height.

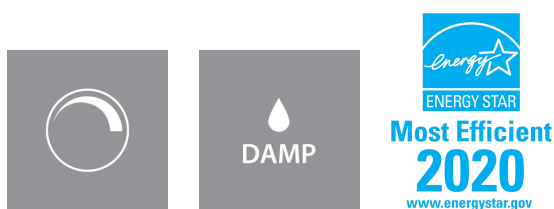


Image 4.2: Icons indicating dimmable functionality, damp location suitability, and Energy Star certification.

5. SETUP AND INSTALLATION

This fixture is designed for surface-mount ceiling or wall applications. Follow these general steps for installation. Refer to the detailed wiring diagrams included with your physical product for specific electrical connections.

5.1 Pre-Installation

1. **Turn off Power:** Locate the circuit breaker controlling the light fixture location and turn it OFF.
2. **Unpack Fixture:** Carefully remove the fixture and all components from the packaging. Inspect for any damage.

3. **Select Color Temperature (Optional):** The 5-CCT selectable switch is located inside the fixture. You can set your desired color temperature before installation. To access, gently twist and remove the acrylic diffuser. Select the desired Kelvin setting (2700K, 3000K, 3500K, 4000K, or 5000K) using the switch.

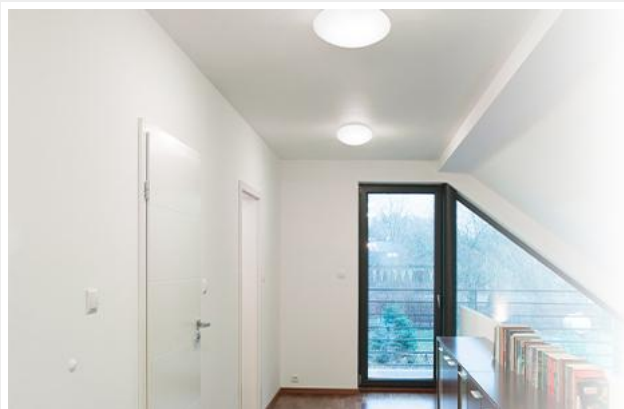
5.2 Mounting the Fixture

1. **Attach Mounting Bracket:** Secure the provided mounting bracket to the junction box in the ceiling or wall using the screws provided. Ensure it is firmly attached.
2. **Electrical Connections:** Connect the fixture's wires to the corresponding house wires (black to black, white to white, ground to ground) using wire nuts. Ensure all connections are secure.



Image 5.1: Rear view of the fixture showing electrical wiring connections.

3. **Secure Fixture:** Align the fixture with the mounting bracket and secure it using the provided screws or twist-lock mechanism, depending on the specific design.
4. **Install Diffuser:** If removed, reattach the acrylic diffuser by twisting it securely onto the fixture body.



Can be mounted on ceiling or wall in all orientations



Multiple LED array for uniform illumination

Image 5.2: The fixture can be mounted on ceilings or walls in various orientations.

5.3 Post-Installation

Once the fixture is securely installed and all connections are made, turn the power back ON at the circuit breaker.

6. OPERATING INSTRUCTIONS

6.1 Changing Color Temperature

The Glo fixture features an on-board 5-CCT selectable switch. This switch can be accessed by gently twisting and removing the acrylic diffuser. Use the switch to select your preferred color temperature:

- 2700K: Warm light
- 3000K: Warm White light
- 3500K: Neutral White light
- 4000K: Cool White light
- 5000K: Natural White light

After selecting the desired setting, reattach the diffuser by twisting it back into place.

6.2 Dimming Functionality

This fixture is designed for smooth and continuous dimming with most standard LED dimmers. For optimal performance, WAC Lighting recommends using an electronic low voltage (ELV) or TRIAC dimmer. Ensure your dimmer is compatible with LED lighting.

7. MAINTENANCE

The WAC Lighting Glo fixture requires minimal maintenance. Follow these guidelines to ensure its longevity and performance:

- **Cleaning:** Ensure power is OFF before cleaning. Wipe the fixture with a soft, dry, or slightly damp cloth. Do not use abrasive cleaners, solvents, or polishes as they may damage the finish or electrical components.
- **LEDs:** The integrated LEDs are designed for long life and are not user-replaceable. Do not attempt to open the sealed LED module.

8. TROUBLESHOOTING

If you experience issues with your fixture, refer to the following common problems and solutions:

Problem	Possible Cause	Solution
Fixture does not light up	No power to the fixture Loose wiring connection Faulty fixture	Check circuit breaker and wall switch. Verify all wire connections are secure (ensure power is OFF first). Contact customer support if power is confirmed and wiring is correct.
Light flickers or dims improperly	Incompatible dimmer switch Loose wiring connection	Ensure dimmer is LED compatible (ELV or TRIAC recommended). Check wiring connections (ensure power is OFF first).
Color temperature cannot be changed	Switch not properly set	Remove diffuser and ensure the 5-CCT switch is firmly set to one of the positions.

If troubleshooting steps do not resolve the issue, please contact WAC Lighting customer support.

9. WARRANTY AND SUPPORT

9.1 Warranty Information

This WAC Lighting product is covered by a **5-year limited manufacturer's warranty**. This warranty covers defects in materials and workmanship under normal use. Please retain your proof of purchase for warranty claims.

9.2 Customer Support

For technical assistance, warranty claims, or further information, please contact WAC Lighting directly. Visit the official WAC Lighting website for contact details and support resources.

Manufacturer: WAC Lighting

Website: www.waclighting.com (Example link, please refer to actual product documentation for correct support contact information)