

hntoolight 100W LED Floodlight

hntoolight 100W LED Floodlight Instruction Manual

Model: 100W LED Floodlight

1. INTRODUCTION

Thank you for choosing the hntoolight 100W LED Floodlight. This manual provides essential information for the safe and efficient installation, operation, and maintenance of your new floodlight. Please read these instructions carefully before use and retain them for future reference.

2. SAFETY INFORMATION

- **Electrical Safety:** Installation should be performed by a qualified electrician to ensure compliance with local electrical codes and safety standards. Always disconnect power before installation or maintenance.
- **Voltage:** Ensure the power supply voltage (AC85-265V) matches the floodlight's requirements.
- **Waterproof Rating:** This product has an IP66 waterproof rating, meaning it is protected against powerful water jets. However, it is **not designed to be submerged in water**.
- **Heat:** The floodlight may become hot during operation. Avoid touching the light surface directly when in use.
- **Eye Protection:** Do not stare directly into the LED light source when it is illuminated, as it may cause eye strain or damage.

3. PRODUCT OVERVIEW

The hntoolight 100W LED Floodlight is designed for outdoor security and landscape lighting, offering high brightness and energy efficiency. It features a durable aluminum shell and a 120-degree beam angle.

Key Features:

- **Power:** 100W
- **Input Voltage:** AC85-265V
- **Luminous Flux:** 9000 Lumens
- **Color Temperature:** Cold White (6000K-6500K)
- **Waterproof Rating:** IP66

- **Beam Angle:** 120 degrees
- **Material:** Aluminum shell, Glass shade
- **Lifespan:** > 30,000 hours
- **Non-Dimmable:** This model is not dimmable.

Components Included:

- 1 x hntoolight 100W LED Floodlight (Bulb included)



Figure 3.1: Front view of the hntoolight 100W LED Floodlight with silver shell.

100W

LED: COB

Power: 100W

Material: Aluminum

Size: 385*370*160MM

Waterproof Grade: IP65

Lighting Angle: 120 degree

Working Voltage: AC85-265V

Suitable Environment: -35--+50 degree

**Suitable Place: advertising board,
Square, Outdoor lighting,
etc.**



Figure 3.2: Product dimensions and basic specifications.

4. SETUP

4.1 Pre-Installation Checklist

- Ensure all components are present and undamaged.
- Verify the installation location is suitable for a wall-mounted floodlight and can support its weight.
- Confirm power supply is turned off at the circuit breaker before beginning installation.

4.2 Mounting Instructions

1. Position the mounting bracket against the desired surface (wall, ceiling, or ground).
2. Mark the drilling points through the holes on the bracket.
3. Drill appropriate holes and insert wall anchors if necessary.
4. Secure the bracket firmly using screws.
5. Adjust the floodlight's angle as needed using the adjustable bracket.

4.3 Wiring Instructions

The floodlight comes with a pre-attached power cord. Connect it to your AC85-265V power supply according to the following standard wiring color codes:

- **Brown Wire:** Live (L)
- **Blue Wire:** Neutral (N)
- **Yellow/Green Wire:** Ground (GND)

Ensure all connections are secure and insulated to prevent short circuits or electrical hazards.

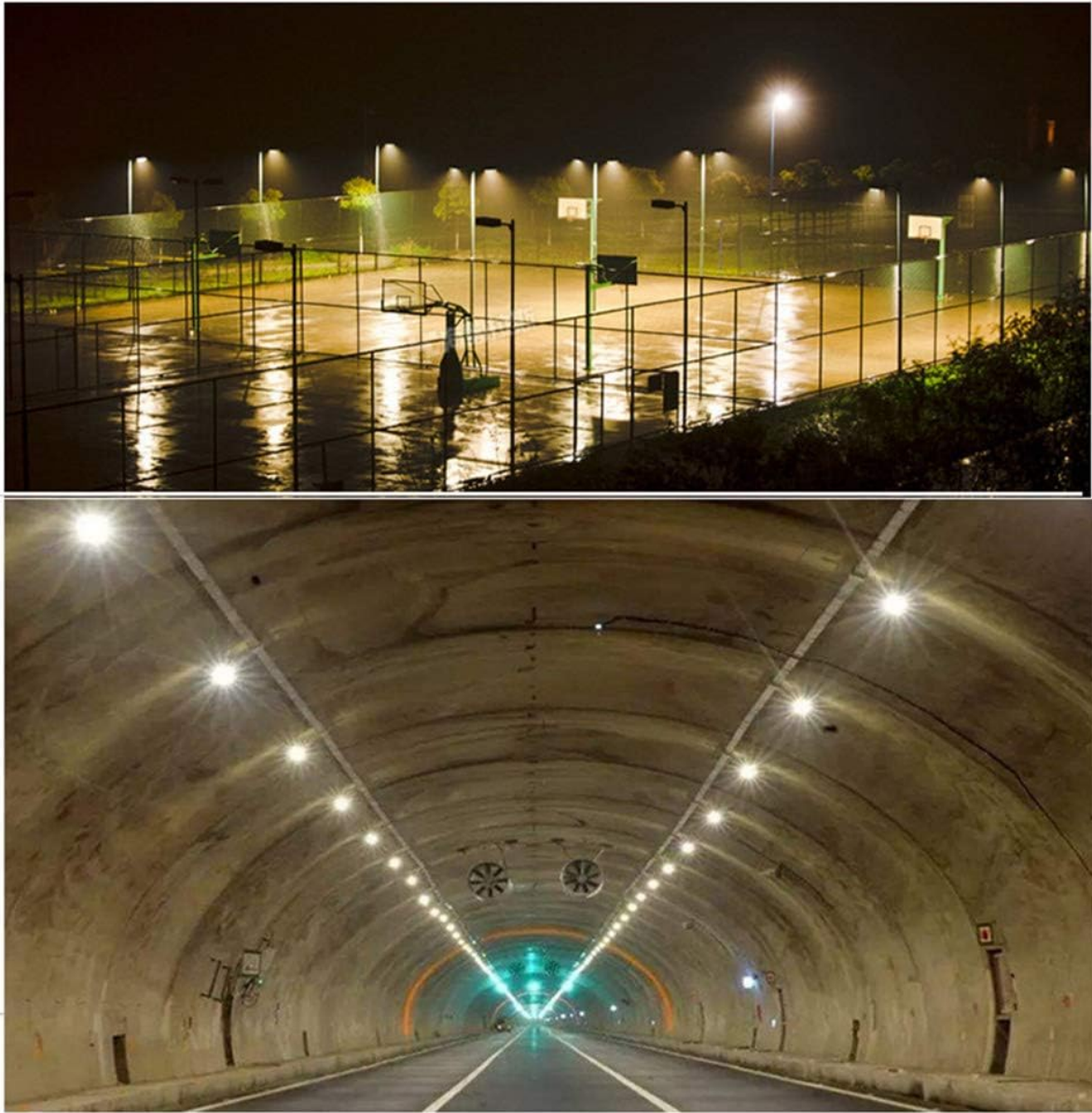


Figure 4.1: Various mounting configurations for the floodlight.

5. OPERATING INSTRUCTIONS

Once properly installed and wired, the hntoolight 100W LED Floodlight operates by simply supplying power to it. There are no additional controls on the unit itself.

- **Power On/Off:** Control the floodlight using an external switch connected to its power supply.
- **Beam Adjustment:** The floodlight's angle can be adjusted by loosening the bolts on the mounting bracket, repositioning the light, and then tightening the bolts securely.
- **Non-Dimmable:** This floodlight is designed for full brightness operation only and is not compatible with dimmer switches.

6. MAINTENANCE

Regular maintenance helps ensure the longevity and optimal performance of your floodlight.

- **Cleaning:** Periodically clean the glass surface with a soft, damp cloth to remove dirt and debris that may obstruct light output. Do not use abrasive cleaners or solvents.
- **Inspection:** Annually inspect the power cord and mounting bracket for any signs of wear, damage, or

corrosion. Ensure all connections remain secure.

- **Power Disconnection:** Always disconnect power to the floodlight before performing any cleaning or inspection.

7. TROUBLESHOOTING

If you encounter issues with your hntoolight LED Floodlight, refer to the following common troubleshooting steps:

- **Light Not Turning On:**
 - Check if the power supply is active.
 - Verify all wiring connections are correct and secure.
 - Inspect the circuit breaker for a tripped switch.
- **Flickering Light:**
 - Ensure stable power supply.
 - Check for loose wiring connections.
- **Reduced Brightness:**
 - Clean the glass surface of the floodlight.
 - Ensure the floodlight is receiving adequate voltage.

If problems persist after attempting these steps, please contact customer support.

8. SPECIFICATIONS

Feature	Specification
Model	100W LED Floodlight
Brand	hntoolight
Power	100 Watts
Input Voltage	AC85-265V
Brightness	9000 Lumens
Light Source Type	COB LED
Color Temperature	Cold White (6000K-6500K)
Beam Angle	120 Degrees
Waterproof Rating	IP66
Shell Material	Aluminum
Shade Material	Glass
Lifespan	> 30,000 hours

Feature	Specification
Operating Environment	-35°C to +50°C
Dimmable	No
Mounting Type	Wall Mount
UPC	791809476652

9. WARRANTY AND SUPPORT

9.1 Warranty Information

The hntoolight 100W LED Floodlight comes with a **1-year warranty** from the date of purchase, covering defects in materials and workmanship under normal use. This warranty does not cover damage caused by improper installation, misuse, accidents, or unauthorized modifications.

9.2 Customer Support

For technical assistance, warranty claims, or any questions regarding your hntoolight product, please contact the manufacturer directly. Refer to your purchase documentation for specific contact details or visit the hntoolight official website.