

GIKPAL HI1180_01

GIKPAL Gaming Desk with Drawers

MODEL: HI1180_01 (47 INCH COMPUTER DESK)

Introduction

Thank you for choosing the GIKPAL Gaming Desk with Drawers. This manual provides essential information for the proper assembly, operation, maintenance, and troubleshooting of your new desk. Please read it thoroughly before beginning assembly and retain it for future reference.

Before Assembly

- Verify all parts are present and undamaged. If any parts are missing or damaged, contact customer support.
- Ensure you have adequate space for assembly.
- It is recommended to have two people for assembly to ensure stability and ease of handling.
- During assembly, initially loosen all screws, especially where the tabletop combines. Gently pat the tabletop to ensure it is level before fully tightening all screws.
- Adjust the desk feet for different height needs, particularly on uneven ground, to maintain balance.
- Note that colors may vary slightly from images due to studio lighting and monitor/screen settings.

Dimensions: 47.2"D x 23.6"W x 29.5"H. Maximum Weight Capacity: 220 lbs.

MAX WEIGHT CAPACITY: 220LBS

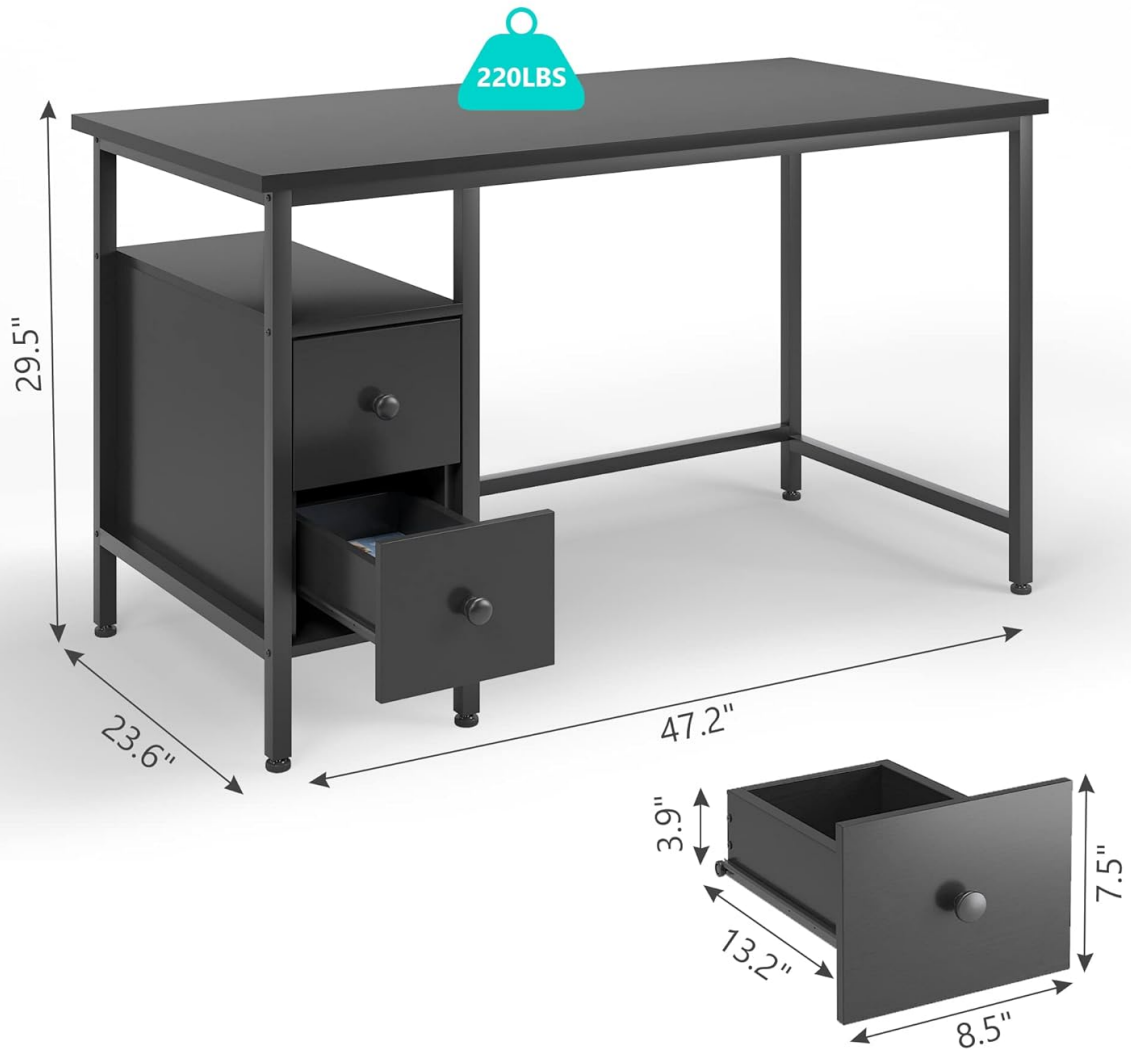


Image: GIKPAL Gaming Desk with key dimensions and maximum weight capacity of 220 lbs.

Assembly Instructions

The GIKPAL Gaming Desk is designed for straightforward assembly. Follow the included instructions and use the provided tools. The drawers can be installed on either the left or right side, depending on your preference.

Drawer Assembly

Assemble the two drawers first. Ensure all components are correctly aligned before securing them.



Image: Close-up view of the drawer components, showing the smooth pull and push mechanism.

Two-Tier Drawers Design

Convenient to store odds and ends, keep your space tidy and organized.



Easy to Clean



Ample Space



Image: The two-tier drawer design provides convenient storage for various items, helping to keep your space tidy.

Frame and Tabletop Assembly

Attach the metal frame components, then integrate the assembled drawer unit. Finally, secure the tabletop.



Image: Illustration demonstrating that the drawer system can be installed on either the left or right side of the desk.



Image: Adjustable footpads on the desk legs allow for stability on uneven surfaces.

Assembly Videos

For a visual guide, please refer to the official assembly videos below:

Your browser does not support the video tag.

Video: GIKPAL Office Desk with Drawer Assembly Guide. This video demonstrates the step-by-step assembly process for the desk, including drawer installation.

Your browser does not support the video tag.

Video: GIKPAL Study Desk with 2 Drawers for Home, Office Use. This video provides a comprehensive assembly walkthrough for the desk, highlighting key steps.

Operating Instructions

The GIKPAL Gaming Desk is designed for versatile use in various settings such as bedrooms, living rooms, offices, and study rooms. Its spacious surface accommodates computers, monitors, and other office supplies, while the integrated drawers provide convenient storage.

- **Desk Surface:** Utilize the large surface area for your computer, gaming setup, or work materials.
- **Drawers:** The two drawers are designed for smooth operation. Pull them out to store documents, stationery, or personal items. Push them back gently to close.
- **Adjustable Feet:** Ensure the desk is stable by adjusting the footpads on each leg to compensate for uneven flooring.



Image: The GIKPAL Gaming Desk set up for a gaming environment, showcasing its spacious surface and integrated storage.

Maintenance

To ensure the longevity and appearance of your GIKPAL Gaming Desk, follow these simple maintenance guidelines:

- **Cleaning:** Wipe the desk surfaces with a dry cloth. Avoid abrasive cleaners or harsh chemicals that could damage the laminated finish.
- **Spills:** Immediately wipe up any spills to prevent staining or damage to the engineered wood.
- **Hardware:** Periodically check all screws and fasteners to ensure they are tight. Retighten if necessary to maintain stability.

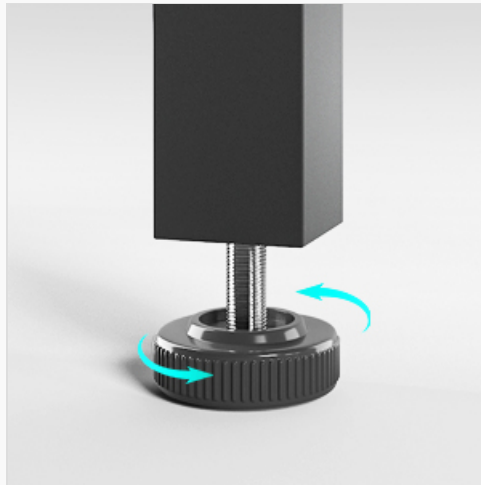


Image: Close-up of the desk surface, highlighting its durable and easy-to-clean laminated finish.

Troubleshooting

If you encounter any issues with your GIKPAL Gaming Desk, refer to the following common solutions:

- **Desk Wobbles:**
 - Check if all screws are securely tightened. Loosen them slightly, gently pat the tabletop to level it, then retighten.
 - Adjust the desk feet to stabilize the desk on uneven flooring.
- **Drawers are Stiff or Jammed:**
 - Ensure the drawer slides are properly aligned and free of obstructions.
 - Verify that the drawer components were assembled correctly according to the instructions.

Specifications

Feature	Detail
Brand	GIKPAL
Model Number	HI1180_01
Product Dimensions	47.2"D x 23.6"W x 29.5"H
Color	Black
Material	Engineered Wood (Top), Iron (Base)
Item Weight	60.8 Pounds
Number of Drawers	2

Special Feature	Adjustable Feet
Required Assembly	Yes
Includes All Assembly Tools	Yes

Warranty and Support

Your GIKPAL Gaming Desk comes with a **12-month manufacturer warranty**.

GIKPAL is committed to providing timely and stable customer service. If you have any questions or require assistance with your computer desk, please do not hesitate to contact us. We are dedicated to ensuring your satisfaction.

For support, please refer to the contact information provided at the point of purchase or visit the official GIKPAL website.