

## Phomemo PM-M02SB-TZ1

# Phomemo M02S Mini Phone Printer User Manual

Model: M02S (PM-M02SB-TZ1)

Your portable solution for high-quality thermal printing.

## 1. INTRODUCTION

Thank you for choosing the Phomemo M02S Mini Phone Printer. This compact and versatile thermal printer is designed for convenience, allowing you to print photos, text, memos, and labels directly from your smartphone or PC. With its 300dpi resolution, it delivers clear and high-definition prints without the need for ink. This manual provides essential information for setting up, operating, and maintaining your device.



Image: The Phomemo M02S Mini Phone Printer in black, shown alongside several rolls of thermal paper in different sizes and colors, highlighting its compact design and paper compatibility.

## 2. WHAT'S IN THE BOX

Upon opening your Phomemo M02S package, you should find the following items:

- 1 Phomemo M02S Mini Pocket Printer (Black)
- 1 pcs 53mm White Sticker Paper
- 1 pcs 25mm Transparent & Semi-Transparent Paper
- 1 pcs 15mm Purple/Orange/Rose Paper
- 1 Micro USB wire
- 1 Gift Box



Image: A visual representation of the Phomemo M02S printer and its included accessories, such as the data cable, gift box, and various rolls of thermal paper (53mm white, 25mm clear/semi-transparent, and 15mm colored).

## 3. SETUP GUIDE

---

### 3.1 Charging the Printer

Before initial use, fully charge your Phomemo M02S printer using the provided Micro USB cable. Connect the cable to the printer's charging port and the other end to a USB power adapter (not included) or a computer's USB port. The indicator light will show charging status.

### 3.2 Installing the Phomemo App

The Phomemo M02S printer operates via the "Phomemo" mobile application. Download the app from your device's app store:

[Google Play Store \(Android\)](#)

[Apple App Store \(iOS\)](#)

# Super Easy to Use-Bluetooth Connection



Phomemo



Image: A smartphone displaying the Phomemo app interface, with the Phomemo M02S printer nearby, illustrating the Bluetooth connection process. App store icons for Google Play and Apple App Store are also visible.

## 3.3 Connecting via Bluetooth

1. Ensure your Phomemo M02S printer is turned on.
2. Enable Bluetooth on your smartphone or tablet.
3. Open the Phomemo app. The app will automatically search for and connect to your printer. If it doesn't connect automatically, select your printer from the device list within the app.

## 3.4 Loading Thermal Paper

The Phomemo M02S supports three sizes of thermal paper: 53mm, 25mm, and 15mm. To load paper:



1. Open the printer's paper compartment cover.
2. Insert the thermal paper roll with the printable side facing the print head. Ensure the roll is properly seated.
3. Close the cover, leaving a small portion of paper extending from the output slot.
4. The printer includes an additional paper holder for stronger stability and to prevent paper jamming, especially with smaller rolls.



Image: The Phomemo M02S printer on a desk with various paper rolls, illustrating the three compatible paper widths: 53mm, 25mm, and 15mm. A printed image is shown emerging from the printer.

## 4. OPERATING INSTRUCTIONS

The Phomemo app offers a wide range of functions to maximize your printer's utility.

#### 4.1 Basic Printing (Photos, Text, Memos)

1. Open the Phomemo app and ensure your printer is connected.
2. Select the desired function (e.g., "Print Images" for photos, "Notes" for text, or choose from various templates).
3. Edit your content within the app. You can adjust print density (fine, medium, thick) and utilize various fonts and graphics.
4. Tap the print icon to send the job to your M02S printer.



**Gift Card**

**Stickers**

**Notes**

**Photos**

# Multipurpose Inkless Printer

Image: A collage demonstrating various applications of the Phomemo M02S printer, including printing gift cards, stickers, notes, and photos, emphasizing its versatility as a multipurpose inkless printer.



## 4.2 Using "Label Workshop"

For printing 15mm or 25mm labels, utilize the "Label Workshop" feature:

1. In the Phomemo app, navigate to the "Label Workshop" section.
2. Choose from existing templates or create a new label.
3. Customize your label with text, icons, or images.
4. Print the label. The app is designed to optimize printing for these smaller paper sizes.

## 4.3 Exploring App Features

The Phomemo app is regularly updated with new graphics and templates. Key features include:

- **Graphic Library:** Access a wide range of free graphics for various occasions.
- **Variety Fonts:** Choose from numerous font styles for your text.
- **Templates:** Over 1000 templates for lists, plans, business, and more.
- **Label Workshop:** Dedicated section for creating and printing labels.
- **Notes:** For simple text printing.
- **Toolbox:** Additional tools for enhanced printing.
- **Scan:** Convert scanned text into editable content.
- **Print Web:** Print content directly from web pages.
- **Document Print:** Print micro-office documents.
- **OCR:** Optical Character Recognition for text extraction.



Image: A screenshot of the Phomemo app showcasing its diverse features, including a library of free graphics, various font options, and over 1000 templates for different printing needs.

Your browser does not support the video tag.

Video: This video demonstrates the Phomemo M02S Pocket Phone Printer in action, showcasing its ease of use for DIY printing projects, such as creating custom stickers and decorations for various items like Easter eggs.

## 5. MAINTENANCE

### 5.1 Cleaning the Print Head

To ensure optimal print quality, periodically clean the print head. Use a cotton swab lightly dampened with rubbing alcohol to gently wipe the print head. Allow it to dry completely before use.

### 5.2 Replacing Paper Rolls

When the paper roll is depleted, replace it with a new Phomemo thermal paper roll of the desired size (53mm, 25mm, or 15mm). Follow the paper loading instructions in Section 3.4.

## **6. TROUBLESHOOTING**

---

### **6.1 Printer Not Connecting via Bluetooth**

- Ensure the printer is turned on and fully charged.
- Verify Bluetooth is enabled on your mobile device.
- Restart both the printer and your mobile device.
- Close and reopen the Phomemo app.
- If issues persist, try "forgetting" the device in your phone's Bluetooth settings and re-pairing.

### **6.2 Poor Print Quality (Faint or Streaky Prints)**

- Check if the thermal paper is loaded correctly with the printable side facing the print head.
- Clean the print head as described in Section 5.1.
- Adjust the print density settings within the Phomemo app.
- Ensure the paper roll is not old or damaged. Thermal paper has a shelf life.





Image: A side-by-side comparison showing the superior 300dpi HD print quality of the Phomemo M02S thermal printer compared to another printer, highlighting its inkless operation.

### 6.3 Paper Jams

- Turn off the printer immediately.
- Gently open the paper compartment and carefully remove any jammed paper. Avoid pulling forcefully to prevent damage.
- Ensure the paper roll is inserted correctly and the additional paper holder is utilized if needed.
- Use only compatible Phomemo thermal paper.

## 7. SPECIFICATIONS

Feature	Detail
Brand	Phomemo
Model Name	M02S
Item Model Number	PM-M02SB-TZ1
Printing Technology	Thermal
Max Black and White Print Resolution	300 dpi
Connectivity Technology	Bluetooth, USB
Compatible Devices	PC, Smartphones
Control Method	App (Android, iOS)
Max Media Size	4x6 inches (10.16 x 15.24 cm)
Item Weight	12.3 ounces
Batteries	1 Lithium Polymer battery (included)
Specific Uses For Product	Home, Office, School, Business

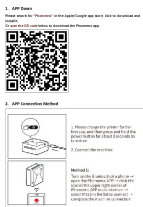
## 8. WARRANTY AND SUPPORT

For warranty information and technical support, please refer to the official Phomemo website or contact Phomemo customer service directly. Keep your purchase receipt for warranty claims.

You can visit the official Phomemo store for more information and support:

[Visit the Phomemo Store](#)

### Related Documents - PM-M02SB-TZ1

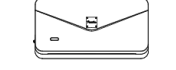


# Phomemo M02S Printer: App Download, Connection, and Sticker Paper Replacement Guide

A comprehensive guide for the Phomemo M02S printer, covering app download, Bluetooth connection methods, and step-by-step instructions for replacing sticker paper.

## Quick Start Guide

### M04AS



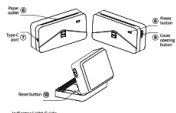
Before using, please read the manual carefully and keep it for future reference.

#### English

##### 01. Package Contents



##### 02. Printer Components



Indicator Light State	Meaning
Power Indicator	Power On / Charging
Status Indicator	Ready / Paper Jam / Low Paper / Overheating

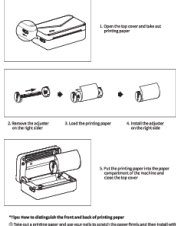
##### 03. Note

- 1. The printer is a USB printer. You need to connect the printer to the computer via USB cable.
- 2. The printer is a thermal printer. It does not require ink or toner.
- 3. The printer is a mini printer. It is suitable for home and office use.
- 4. The printer is a wireless printer. It can be connected to the mobile phone via Bluetooth.
- 5. The printer is a rechargeable printer. It can be used without a power adapter.
- 6. The printer is a portable printer. It is easy to carry and use.
- 7. The printer is a quiet printer. It does not make much noise.
- 8. The printer is a fast printer. It can print quickly.
- 9. The printer is a high-quality printer. It can print clear and sharp images.
- 10. The printer is a reliable printer. It can work for a long time.

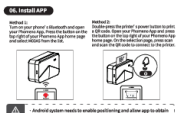
##### 04. How to Download the App



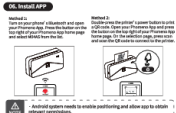
##### 05. Install Thermal Paper



##### 06. Install APP



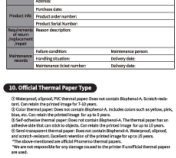
##### 07. Warranty



##### 08. After-sales Service



##### 09. Official Thermal Paper Type



##### 10. Basic Functions



# Phomemo M04AS Mini Printer Quick Start Guide

A quick start guide for the Phomemo M04AS Mini Printer, covering package contents, printer components, usage notes, app installation, warranty, after-sales services, thermal paper types, basic functions, and troubleshooting.

## 12. Frequently Asked Questions

Please read this instruction book carefully before operating the product.

Get started quickly with your Phomemo M02S Mini Printer. This guide covers package contents, printer components, setup, app connection, paper replacement, troubleshooting, and important warnings.





### [Phomemo Printer Troubleshooting Guide](#)

A comprehensive guide to troubleshooting common issues with Phomemo portable printers, including Bluetooth connectivity, printing problems, and driver installation.