

LUVERNE 401801

LUVERNE 401801 Grip Step Brackets User Manual

Model: 401801

1. INTRODUCTION

This manual provides detailed instructions for the proper installation, usage, and maintenance of your LUVERNE 401801 Grip Step Brackets. These brackets are designed to provide secure support for compatible grip step running boards on your vehicle. Please read this manual thoroughly before beginning installation to ensure safe and correct assembly and operation.

2. SAFETY INFORMATION

Always prioritize safety during installation and use. Failure to follow these safety guidelines may result in injury or damage to the product or vehicle.

- Wear appropriate personal protective equipment (PPE), such as safety glasses and gloves, during installation.
- Ensure the vehicle is parked on a level surface and the parking brake is engaged before beginning work.
- Do not exceed the maximum weight capacity specified for the grip steps once installed.
- Regularly inspect all mounting hardware for tightness and signs of wear or corrosion.
- If you are unsure about any part of the installation process, consult a qualified professional.

3. WHAT'S IN THE BOX

Verify that all components are present before starting installation.

- LUVERNE 401801 Grip Step Brackets (Quantity as per vehicle application)
- Installation Hardware Kit (Bolts, washers, nuts, etc.)
- This Instruction Manual



Image: Three black metal brackets, varying slightly in shape, designed to support a running board. These are the primary components of the LUVERNE 401801 kit.

4. SETUP AND INSTALLATION

The following steps outline the general installation process. Specific vehicle applications may vary. Refer to any vehicle-specific instructions provided with your grip steps.

1. **Prepare the Vehicle:** Park the vehicle on a flat, stable surface. Engage the parking brake. If necessary, raise the vehicle using a jack and secure it with jack stands.
2. **Locate Mounting Points:** Identify the factory mounting points on the vehicle's frame or rocker panel, typically beneath the doors. These points are where the brackets will attach.
3. **Attach Brackets to Vehicle:** Secure each bracket to the designated mounting points using the provided hardware. Do not fully tighten hardware at this stage. Ensure the brackets are oriented correctly for your vehicle's side (driver/passenger).
4. **Position Grip Step:** Carefully place the grip step running board onto the installed brackets. Align the mounting holes on the grip step with the corresponding holes on the brackets.
5. **Secure Grip Step to Brackets:** Attach the grip step to the brackets using the appropriate hardware. Again, do not fully tighten.
6. **Adjust and Align:** Adjust the position of the grip step and brackets to ensure proper alignment and levelness. Once satisfied with the positioning, fully tighten all hardware, starting from the vehicle frame connections and then the grip step connections. Refer to torque specifications if available.
7. **Final Inspection:** Double-check all connections to ensure they are secure. Test the stability of the grip step by applying moderate weight.

FEATURES & BENEFITS

Reinforced, 7-gauge,
laser-cut steel brackets



Image: A view from underneath a white vehicle showing a black grip step running board securely mounted with brackets. The image highlights the robust construction of the brackets and their integration with the step.

5. USAGE GUIDELINES

Once installed, the LUVÉRNE Grip Step Brackets provide a stable foundation for your grip steps. Adhere to the following guidelines for optimal performance and longevity:

- Use the grip steps for their intended purpose: assisting entry and exit from the vehicle.
- Do not use the grip steps as a jacking point for the vehicle.
- Avoid excessive or sudden impacts to the grip steps, as this can damage the brackets or the vehicle's mounting points.
- Ensure footwear is clean and dry to maintain grip on the step surface.

6. MAINTENANCE

Regular maintenance will help preserve the appearance and structural integrity of your brackets.

- **Cleaning:** Clean the brackets periodically with mild soap and water. Avoid abrasive cleaners or harsh chemicals that could damage the finish.
- **Inspection:** Every few months, or after off-road use, inspect all mounting hardware for tightness. Re-

tighten any loose bolts to prevent rattling or structural compromise.

- **Corrosion Check:** Examine the brackets and hardware for any signs of rust or corrosion, especially in areas exposed to road salt or harsh weather. Address any corrosion promptly to prevent further degradation.

7. TROUBLESHOOTING

If you encounter issues with your LUVERNE Grip Step Brackets, consider the following common solutions:

- **Rattling Noise:** Check all mounting bolts. Loose hardware is the most common cause of rattling. Tighten all bolts to specification.
- **Step Feels Unstable:** Re-inspect all bracket-to-frame and step-to-bracket connections. Ensure all hardware is fully tightened and that the brackets are correctly seated on the vehicle's mounting points.
- **Difficulty Aligning Step:** Loosen all hardware slightly, adjust the step and brackets until proper alignment is achieved, then re-tighten. Ensure the vehicle is on a level surface during alignment.

8. SPECIFICATIONS

Feature	Detail
Model Number	401801
Brand	LUVERNE
Item Weight	19.86 pounds
Product Dimensions	39 x 13 x 17 inches (Packaging/Shipping Dimensions)
Material	Steel (Inferred from product type)
Finish	Machined (as per product specifications)

9. WARRANTY AND SUPPORT

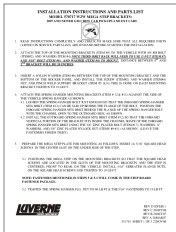
LUVERNE products are manufactured to high standards. For specific warranty information regarding your 401801 Grip Step Brackets, please refer to the warranty card included with your purchase or visit the official LUVERNE website. For technical support, installation assistance, or to report missing/damaged parts, please contact LUVERNE customer service directly.

LUVERNE Customer Service:

- Website: www.luverne.com (Example link, actual link may vary)
- Contact information typically found on the website or product packaging.



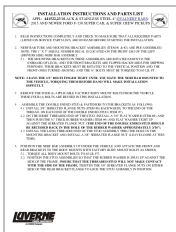
[Luverne 570553 Mega Steps Brackets Installation Instructions for Toyota Tacoma & FJ Cruiser](#)
Detailed installation guide and parts list for Luverne 570553 Mega Steps Brackets, designed for 2005+ Toyota Tacoma Access/Double Cab and 2007+ Toyota FJ Cruiser. Includes step-by-step instructions and part identification.



[Luverne 570717 W2W Mega Step Brackets Installation Guide](#)
Installation instructions and parts list for Luverne 570717 W2W Mega Step Brackets designed for 2007 and newer GM Crew Cab Pickups and Ext Cabs. Includes detailed steps, a comprehensive parts list, and an overview of the assembly diagram.



[ARIES 2021 Catalog & Application Guides: Truck Accessories](#)
Explore the 2021 ARIES catalog featuring a comprehensive range of truck accessories, including bull bars, grille guards, running boards, headache racks, Jeep products, and floor liners. Find application guides and ordering information.



[Luverne 4" Oval Nerf Bars Installation Guide for Ford F-150 \(2015+\)](#)
Step-by-step installation instructions and parts list for Luverne 4" Oval Nerf Bars (Black & Stainless Steel) for 2015 and newer Ford F-150 Super Cab and Super Crew Pickups. Includes hardware details and assembly guidance.



[CURT 2018 Catalog: Trailer Hitches, Towing Accessories & Electrical Guides](#)
Explore the comprehensive CURT 2018 Catalog featuring trailer hitches, towing accessories, brake controls, custom wiring, and essential application guides for safe and reliable towing.



[Luverne July Fourth Celebration at The Lake - Star Herald](#)
Article from the Star Herald detailing the 'free and fun' Fourth of July celebration held at The Lake in Luverne, featuring insights from Chamber Director Jane.