

LG OLED55G1

LG OLED G1 Series 55" 4K Smart OLED evo TV (OLED55G1PUA) Instruction Manual

Overview

Setup

Operating

Maintenance

Troubleshooting

Specifications

Warranty & Support

1. PRODUCT OVERVIEW

The LG OLED G1 Series 55" 4K Smart OLED evo TV (model OLED55G1PUA) offers a premium viewing experience with its advanced OLED evo panel and Gallery Design. This television integrates cutting-edge technology for stunning picture quality, immersive sound, and smart functionalities.

Key Features:

- **OLED evo Panel:** Delivers brighter, punchier, and more vibrant visuals.
- **Gallery Design:** Ultra-slim profile designed for flush wall mounting, blending seamlessly with your decor.
- **4K Resolution:** Provides crisp, detailed images.
- **120Hz Refresh Rate:** Ensures smooth motion for fast-paced content and gaming.
- **AI-Powered:** Features AI Picture Pro and AI Sound Pro for automatic optimization of picture and sound.
- **Dolby Vision IQ & Dolby Atmos:** Offers cinematic picture and immersive multi-dimensional sound.
- **Smart TV with webOS 6.0:** Provides easy access to streaming services, apps, and smart home control.
- **Alexa Built-in:** Integrated voice assistant for convenient control.

2. SETUP

2.1 What's in the Box

Upon unboxing your LG OLED G1 TV, you will find the following components:

- LG OLED G1 55" TV
- User Manual
- Power Cable
- LG Magic Remote
- Wall Mount Bracket (for Gallery Design)

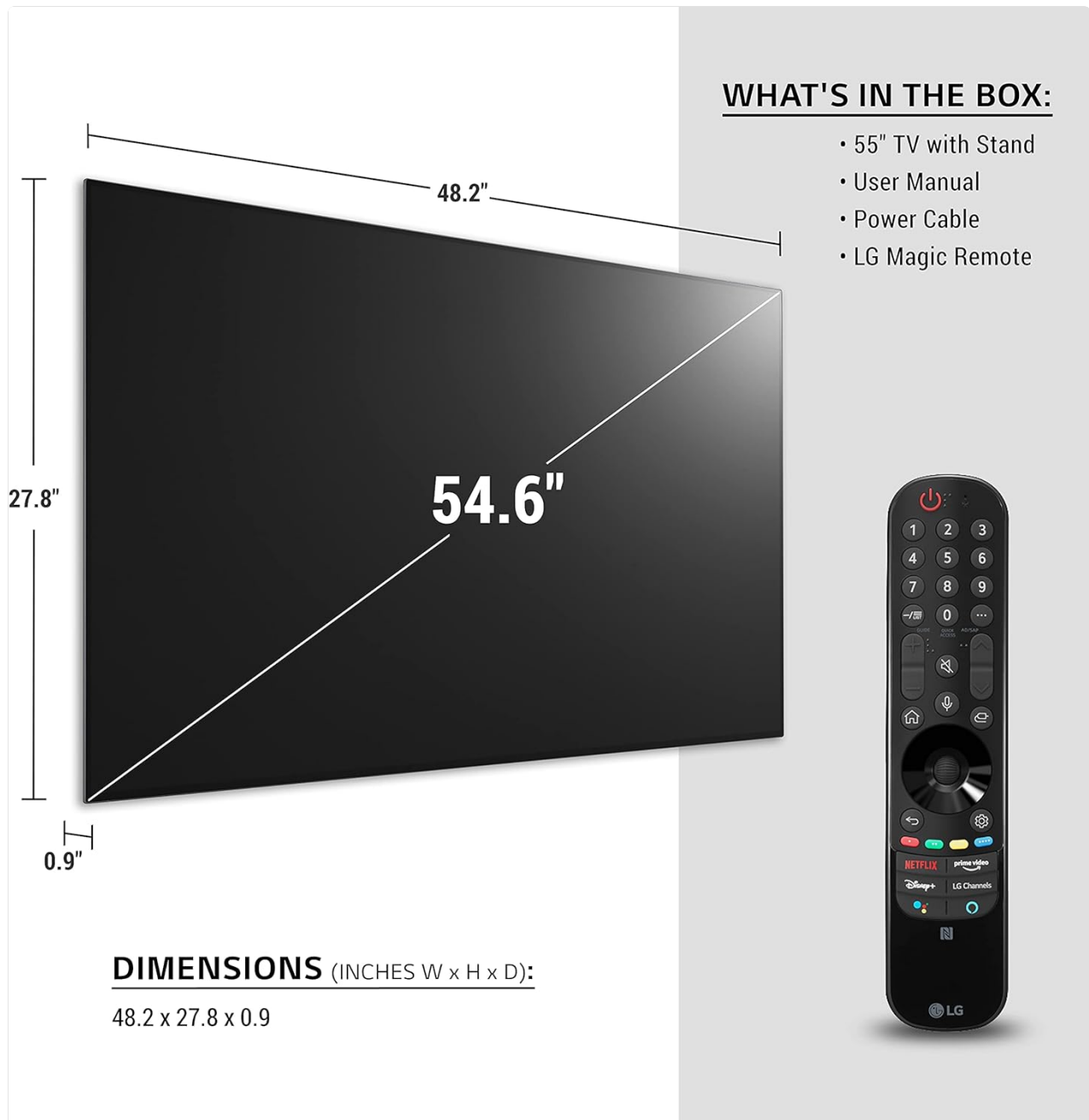
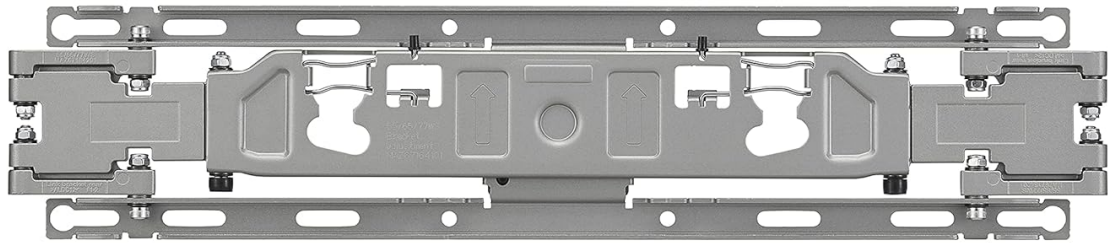


Image: The LG OLED G1 TV with its dimensions and the included Magic Remote, illustrating the contents of the box.

2.2 Mounting the TV

The LG OLED G1 is designed for flush wall mounting, and a dedicated wall mount bracket is included in the box. For optimal aesthetic integration, it is recommended to utilize this bracket.

INCLUDED: Wall mount bracket



***Stand can be purchased separately**

Image: The included wall mount bracket for the LG OLED G1 TV.

If you prefer to place the TV on a stand, a compatible stand must be purchased separately as it is not included with the Gallery Design model.



*A TV stand is NOT included with the LG OLED G1. As this model is designed to be wall-mounted, it includes a slim wall mount bracket. The TV stand can be purchased separately.

Image: The LG OLED G1 TV displayed on an optional stand, which is sold separately.

2.3 Cable Management

The TV features integrated cable management solutions to maintain a clean and organized setup, especially when wall-mounted. Utilize the provided clips and channels on the back of the TV to route your cables neatly.

Your browser does not support the video tag.

Video: An official LG video showcasing the sleek Gallery Design of the LG OLED G1 Series, highlighting its flush wall-mount capability and integrated cable management for a clean aesthetic.

3. OPERATING THE TV

3.1 Picture Quality

The LG OLED G1 Series features an advanced OLED evo panel, delivering exceptional picture quality with enhanced brightness and vibrant colors. Each of the over 8 million self-lit pixels can turn on and off independently, creating perfect black levels and infinite contrast.

Brighter, punchier, and better than ever.

LG OLED evo



Image: The LG OLED evo TV showcasing a vibrant waterfall scene, emphasizing its brighter and punchier display capabilities.

Distinct detail with brighter highlights
and darker shadows.

Infinite Contrast



Image: A comparison illustrating the infinite contrast of LG OLED, showing distinct detail with brighter highlights and darker shadows compared to an LED screen.

Dolby Vision IQ intelligently adjusts picture settings based on content genre and ambient surroundings, ensuring an optimized viewing experience. The a9 Gen4 AI Processor 4K further enhances picture and sound through deep-learning algorithms.

Cinematic picture and sound.

Dolby Vision IQ & Dolby Atmos



Image: A split screen showing the difference between SDR and Dolby Vision IQ, highlighting cinematic picture and sound with Dolby Atmos.

3.2 Sound Quality

Experience immersive audio with Dolby Atmos, which delivers multi-dimensional surround sound. The TV is also WiSA Ready, allowing for wireless connection to compatible speakers for a truly wireless home theater setup.

3.3 Smart Features & webOS 6.0

The LG OLED G1 runs on webOS 6.0, providing a user-friendly interface for accessing a wide range of streaming services and apps. The Home Dashboard allows for easy control of connected smart home devices.

Access over 300 channels for free!

LG Channels

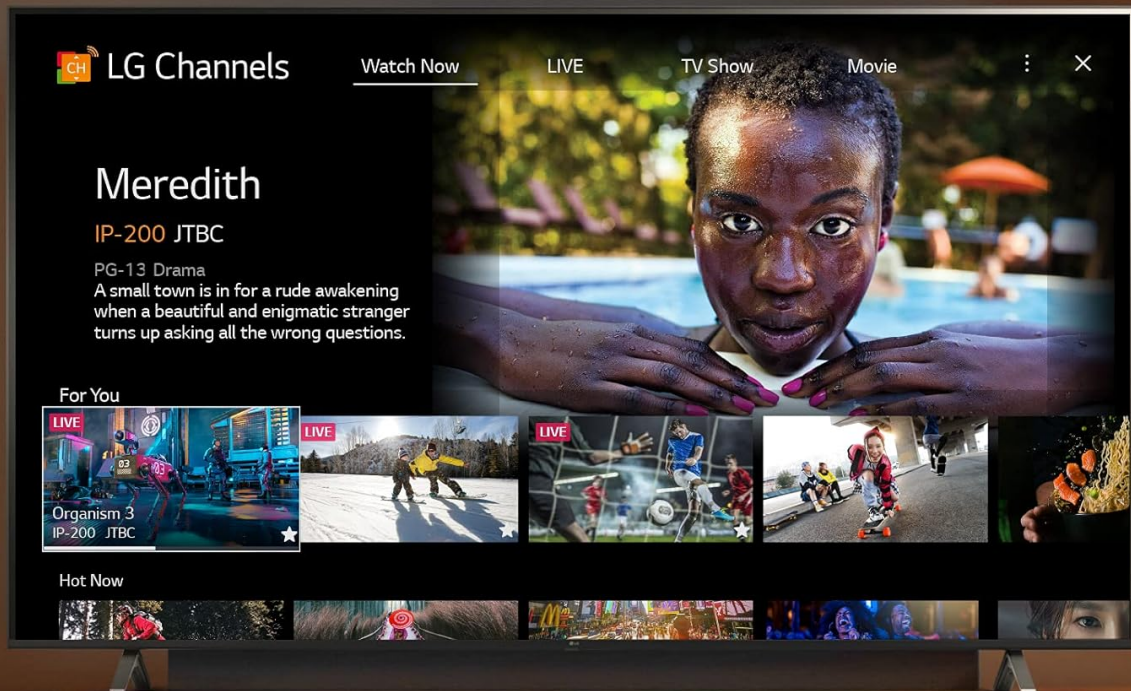


Image: The LG Channels interface displayed on the LG OLED TV, showing access to over 300 free channels.

3.4 Magic Remote & Voice Control

The included LG Magic Remote offers intuitive control with point and scroll functionality, button shortcuts, and voice control. It supports Alexa Built-in and Google Assistant, allowing you to control your TV and smart home devices with voice commands.

Find your favorites—fast.

New Magic Remote

Quickly Connect with a Phone



Screen Mirroring
Cast Mobile Content
Sound Share

Voice Control!



Point & Scroll



Easy Grip!



Image: An illustration of the New Magic Remote's features, including quick connect with a phone, voice control, point & scroll, easy grip, and NFC.





Image: A close-up view of the LG Magic Remote, showing its various buttons and ergonomic design.

3.5 Gaming Features

The LG OLED G1 is optimized for gaming with a 120Hz refresh rate, AI-powered enhancements, and support for advanced gaming technologies. The Game Optimizer puts all your game settings in one place, allowing you to toggle between G-Sync and FreeSync technologies for a smooth gaming experience.

Ultimate gameplay is here.

Clearer, Smoother & Faster

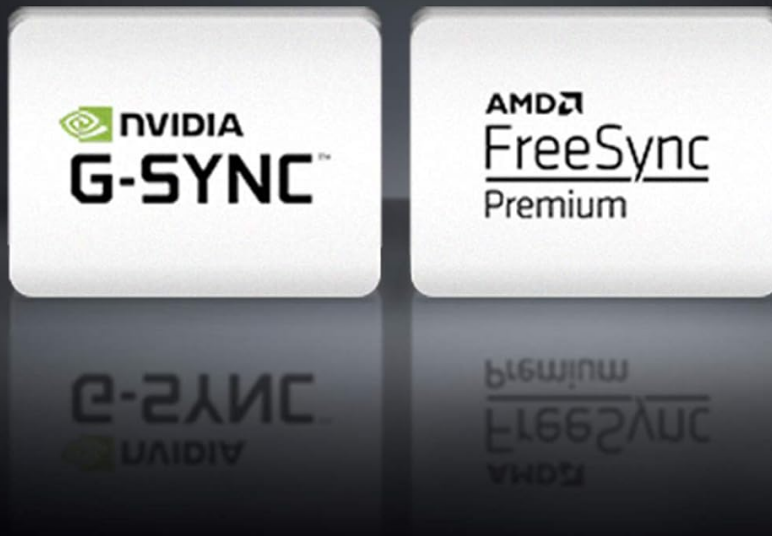


Image: The LG OLED TV displaying NVIDIA G-SYNC and AMD FreeSync Premium logos, indicating support for clearer, smoother, and faster gameplay.

Fast, easy access to all your game settings.

Game Optimizer



Image: The Game Optimizer menu on the LG OLED TV, showing various settings for optimizing game performance.

HDMI 2.1 brings ultimate gameplay with support for VRR (Variable Refresh Rate), ALLM (Auto Low Latency Mode), and eARC (Enhanced Audio Return Channel), ensuring fast-moving content in higher resolution and smooth, synchronized graphics. The TV boasts an incredibly fast 1ms response time.

HDMI 2.1 brings ultimate gameplay.

VRR, ALLM & eARC



Image: A gaming scene on the LG OLED TV, highlighting HDMI 2.1 features like VRR, ALLM, eARC, and a 1ms response time for ultimate gameplay.

Immersive HDR gaming with extreme details.

HGiG Profile

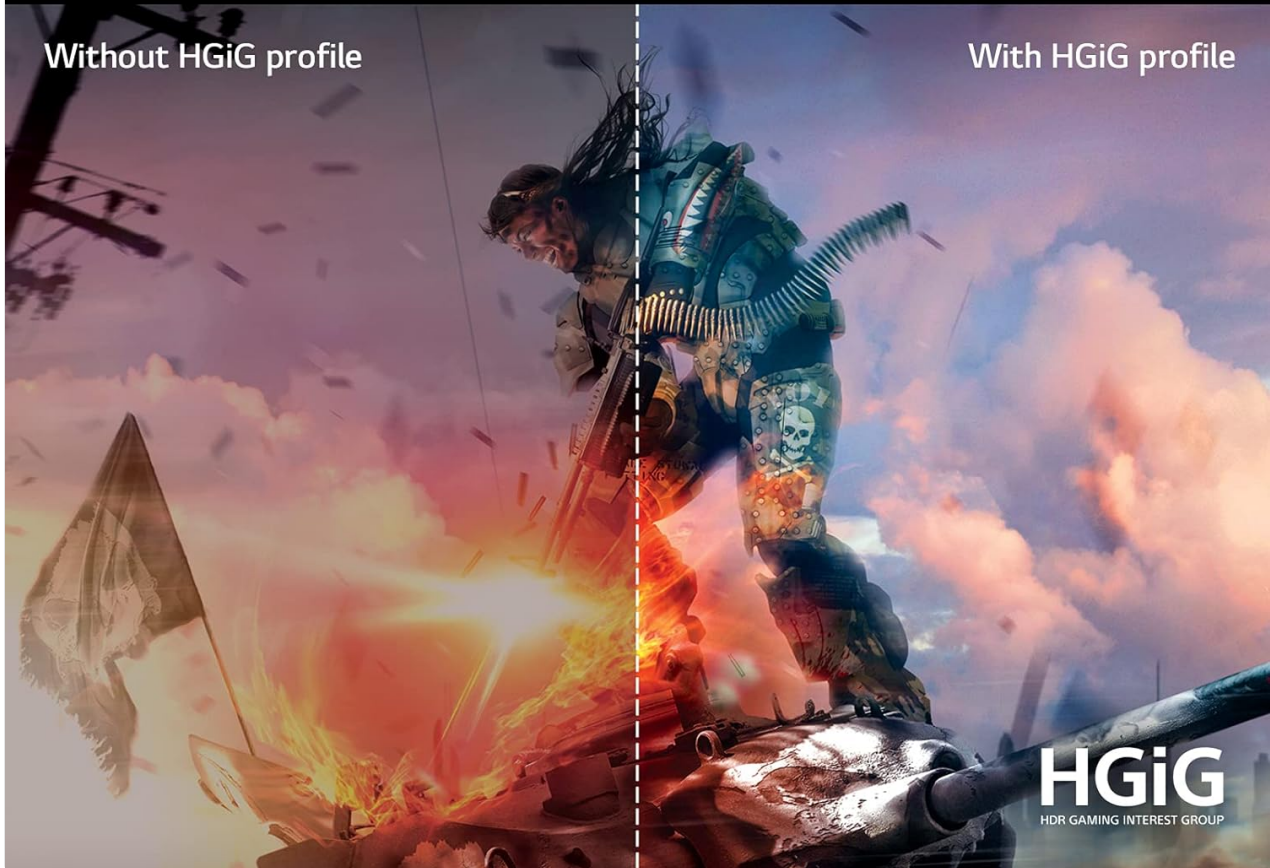


Image: A comparison showing immersive HDR gaming with and without HGiG Profile, demonstrating extreme detail.

4. MAINTENANCE

To ensure the longevity and optimal performance of your LG OLED G1 TV, follow these maintenance guidelines:

- **Screen Cleaning:** Gently wipe the screen with a soft, dry microfiber cloth. For stubborn smudges, lightly dampen the cloth with distilled water or a specialized screen cleaner. Avoid harsh chemicals or abrasive materials.
- **Dusting:** Regularly dust the TV's frame and back panel with a soft, dry cloth to prevent dust buildup.
- **Ventilation:** Ensure proper ventilation around the TV. Do not block the ventilation openings on the back of the TV.
- **Avoid Static Images:** While OLED TVs have features to prevent burn-in, it is advisable to avoid displaying static images or logos for prolonged periods. Utilize screen savers or turn off the TV when not in use.

- **Power Management:** Unplug the TV from the power outlet during lightning storms or when it will be left unattended for long periods.

5. TROUBLESHOOTING

If you encounter issues with your LG OLED G1 TV, consider the following general troubleshooting steps:

- **No Power:** Ensure the power cable is securely plugged into both the TV and a working electrical outlet. Try plugging another device into the same outlet to confirm it has power.
- **No Picture/Sound:** Check all cable connections (HDMI, antenna, etc.) to ensure they are secure. Verify that the correct input source is selected on the TV.
- **Remote Not Working:** Replace the batteries in the Magic Remote. Ensure there are no obstructions between the remote and the TV.
- **Picture Quality Issues:** Check the picture settings (e.g., Picture Mode, Brightness, Contrast) and adjust them as needed. Ensure your content source is of high quality.
- **Smart Features/App Issues:** Ensure the TV is connected to the internet. Try restarting the TV by unplugging it for a few minutes and then plugging it back in.
- **Auto Dimming:** OLED TVs feature auto-dimming to prevent burn-in. If the screen dims after prolonged static content, this is normal behavior. Adjusting picture settings or changing content usually resolves this.

For more detailed troubleshooting or persistent issues, please refer to the comprehensive user manual or contact LG Customer Support.

6. SPECIFICATIONS

Feature	Detail
Brand	LG
Model Number	OLED55G1
Screen Size	55 Inches
Display Technology	OLED
Resolution	4K
Refresh Rate	120 Hz
Product Dimensions	0.9"D x 48.2"W x 27.8"H
Item Weight	50 Pounds
Aspect Ratio	16:9
Connectivity Technology	HDMI, USB
Special Feature	Miracast

7. WARRANTY & SUPPORT

The LG OLED G1 Series comes with a 5-year limited warranty on the LG OLED evo G1 panel. In the first year of the limited warranty, parts, panel, and labor costs are covered. In the second year of the limited warranty, only the panel is covered; labor will be charged. The 5-year limited panel warranty is available for the 77G1, 65G1, and 55G1 TVs.

Enjoy with Confidence You're Covered

The LG OLED G1 is built with the highest level of performance and quality. In fact, we're so confident in our product, we're providing a 5-year limited warranty on the LG OLED evo G1 panel.*



In the 1st year of the limited warranty, panel, parts and labor costs are covered. In the 2nd year of the limited warranty, only panel is covered; labor will be charged. The 5-year limited panel warranty is available for the 77G1, 65G1, and 55G1 TVs. Please see https://www.lg.com/us/PDF/US_Final_warranty_card_210506-G1.pdf for full terms and conditions.

Image: The LG OLED evo TV showcasing its Gallery Design with a 5-year limited panel warranty badge.

For further details on the warranty terms and conditions, please refer to the official LG website or the warranty card included with your product.

For customer support, please visit the [LG Store on Amazon](#) or contact LG directly.

