

TYLT QITRPVTGY-T

TYLT Tray Pivot Wireless Charger User Manual

Model: QITRPVTGY-T

INTRODUCTION

The TYLT Tray Pivot is a versatile wireless charging solution designed to simplify your charging experience and organize your personal items. This device combines a fast wireless charger for your smartphone with a dedicated charging zone for wireless charging headsets or AirPods, all integrated into a convenient vanity tray. Its unique pivoting design allows for expanded storage space, making it an ideal accessory for your desk, nightstand, or entryway.

PACKAGE CONTENTS

- TYLT Tray Pivot Wireless Charger
- USB-C Power Cable (5-foot)
- Power Supply (Wall Adapter)

PRODUCT OVERVIEW

Familiarize yourself with the components of your TYLT Tray Pivot.



Figure 1: TYLT Tray Pivot in open configuration, showing the main charging pad and the storage tray.

Main Wireless Charging Pad: Designed for smartphones, offering up to 10W fast wireless charging. This pad can pivot to reveal additional storage.

Peripheral Charging Zone: A dedicated area for wirelessly charging headsets or AirPods with a wireless charging case.

Storage Tray: A generous space for holding small items like keys, wallets, coins, or other accessories.

USB-C Input Port: Located at the rear for connecting the power cable.



Figure 2: TYLT Tray Pivot in closed configuration, showing the main charging pad covering the storage tray.

SETUP

1. **Connect Power:** Insert the USB-C end of the provided power cable into the USB-C input port on the rear of the TYLT Tray Pivot.
2. **Plug into Outlet:** Connect the other end of the USB-C power cable to the included power supply (wall adapter), then plug the power supply into a standard wall outlet.
3. **Placement:** Place the TYLT Tray Pivot on a flat, stable surface, such as a desk, nightstand, or countertop. Ensure there is adequate ventilation around the device.

The device is now ready for use.

OPERATING INSTRUCTIONS

Charging a Smartphone

1. **Placement:** Place your Qi-compatible smartphone directly onto the main wireless charging pad. Ensure the phone is centered on the pad for optimal charging.
2. **Charging Confirmation:** Your phone's screen should indicate that it is charging. The TYLT Tray Pivot is designed to charge through most phone cases and covers.
3. **Fast Charging:** The charger supports up to 10W fast wireless charging for compatible devices.

Charging Wireless Headsets/AirPods

1. **Placement:** Place your wireless charging headset case or AirPods (with wireless charging case) onto the dedicated peripheral charging zone.
2. **Charging Confirmation:** The device's indicator light (if applicable) or your headset's charging indicator should confirm charging.

Utilizing the Pivoting Tray

The main charging pad can pivot to expose more storage space within the tray.

1. **To Pivot:** Gently push or pull the main charging pad to rotate it on its pivot point. This will reveal or cover the underlying storage area.
2. **Storage:** Use the expanded tray area to store keys, coins, jewelry, or other small personal items.



Figure 3: TYLT Tray Pivot with the main charging pad pivoted to the side, maximizing storage space.

MAINTENANCE

- **Cleaning:** Disconnect the power before cleaning. Use a soft, dry, lint-free cloth to wipe the surface of the charger. Do not use abrasive cleaners, solvents, or aerosol sprays.
- **Avoid Liquids:** Do not expose the device to water or other liquids.
- **Storage:** When not in use for extended periods, store the charger in a cool, dry place away from direct sunlight.

TROUBLESHOOTING

Problem	Possible Cause	Solution
---------	----------------	----------

Problem	Possible Cause	Solution
Device not charging.	<ul style="list-style-type: none">◦ Power cable not connected properly.◦ Device not Qi-compatible.◦ Device not centered on charging pad.◦ Thick phone case interfering.◦ Foreign object on charging pad.	<ul style="list-style-type: none">◦ Ensure power cable is securely plugged into the charger and wall outlet.◦ Verify your device supports Qi wireless charging.◦ Reposition your device to be centered on the charging pad.◦ Remove thick or metallic cases.◦ Remove any metal objects, cards, or foreign debris from the charging surface.
Slow charging.	<ul style="list-style-type: none">◦ Device not properly aligned.◦ Background apps consuming power.◦ Using a non-original power supply.	<ul style="list-style-type: none">◦ Adjust device placement for optimal alignment.◦ Close unnecessary background applications on your device.◦ Ensure you are using the provided power supply and cable.
Charger feels warm.	<ul style="list-style-type: none">◦ Normal operation.◦ Poor ventilation.	<ul style="list-style-type: none">◦ A slight warmth during charging is normal.◦ Ensure the charger is placed in an area with good airflow.

SPECIFICATIONS

Model Number	QITRPVTGY-T
Input Voltage	9 Volts
Wireless Charging Output	Up to 10W (Fast Wireless Charging)
Connectivity	Wireless (Qi-compatible), USB-C (for power input)
Compatible Devices	Qi-compatible Smartphones, Wireless Charging Headsets/AirPods
Product Dimensions (L x W x H)	5.12 x 1.83 x 6.89 inches
Item Weight	15.6 ounces
Included Components	TYLT Tray Pivot, USB-C Power Cable, Power Supply



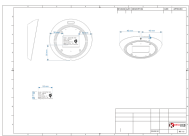

WARRANTY INFORMATION

TYLT products are designed and manufactured to the highest quality standards. For specific warranty terms and conditions, please refer to the warranty card included with your product or visit the official TYLT website. Keep your proof of purchase for warranty claims.

CUSTOMER SUPPORT

If you encounter any issues or have questions regarding your TYLT Tray Pivot, please contact TYLT Customer Support. You can find contact information on the official TYLT website or through your product's packaging.
For the latest information and support resources, please visit:www.tylt.com

Related Documents

	<p>TYLT Marquee 15W MagSafe Compatible Charger - Wireless & Wired Charging</p> <p>Discover the TYLT Marquee, a 15W MagSafe compatible wireless charger and wired charging station. Features dual USB-A/USB-C ports, magnetic charging for iPhone, and a sleek design. Learn about specifications, compatibility, and warranty.</p>
	<p>TYLT PowerPlant User Guide: Portable Charger Instructions</p> <p>Comprehensive user guide for the TYLT PowerPlant portable charger. Learn how to charge your devices, check battery capacity, and recharge the PowerPlant itself. Includes specifications and safety warnings.</p>
	<p>TYLT Wireless Charger Technical Specifications and Dimensions</p> <p>Detailed technical specifications and dimensional drawings for the TYLT wireless charger (Model: QITWSTBK-TMO), including input/output power, FCC ID, and manufacturing details.</p>
	<p>TYLT ACTIVE Bottle 2.0: Smart Water Bottle with Power Bank</p> <p>Discover the TYLT ACTIVE Bottle 2.0, a durable and insulated water bottle featuring a 5,700 mAh removable battery for wireless and wired charging. Learn about its features, usage, and cleaning instructions.</p>

Documents - TYLT – QITRPVTGY-T



[pdf] Product Photos
Microsoft Word QITRPVTGY T External photos Administrator TYLT inc 240 Wireless Charge 2AOAF 2AOAF240
FCC ID: 2AOAF-240 Test Model No..**QITRPVTGY-T** FCC ID: 2AOAF-240 ...
lang: score:29 filesize: 174.64 K page_count: 2 document date: 2020-09-29

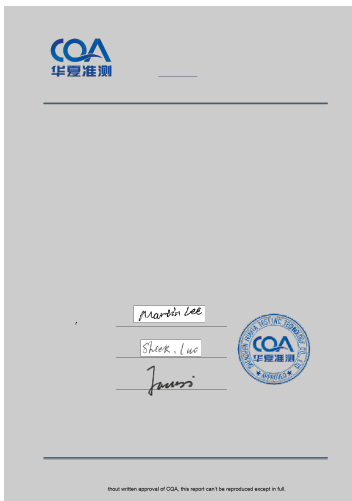


[\[pdf\]](#) Label

Microsoft Word QITRPVTGY T External photos Administrator label location TYLT inc 240 Wireless Charge 2AOAF 2AOAF240

FCC ID: 2AOAF-240 Test Model No.: **QITRPVTGY-T** ...

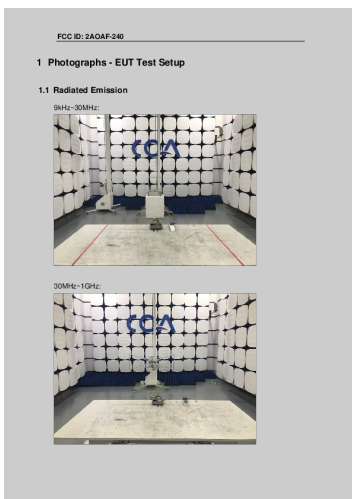
lang: **score:28** filesize: 66.45 K page_count: 1 document date: 2020-09-29



[\[pdf\]](#) Test Report

1 Tiny wireless Charger report TYLT inc 240 Wireless Charge 2AOAF 2AOAF240
Shenzhen Huaxia Testing Technology Co., Ltd 1F., Block A of Tongsheng
Technology Building, Huahui R ... lifornia 93065, United States Equipment Under Test
EUT : Product: Wireless Charger Model No.: **QITRPVTGY-T** Brand Name: N/A FCC
ID: 2AOAF-240 Standards: 47 CFR Part 15, Subpart C Date of Re...

lang:en **score:28** filesize: 1.77 M page_count: 26 document date: 2020-09-28

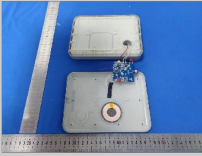
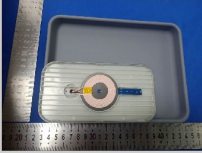


[\[pdf\]](#) Product Photos

Microsoft Word QITRPVTGY T Setup photos Administrator TYLT inc 240 Wireless Charge 2AOAF 2AOAF240

FCC ID: 2AOAF-240 1 Photographs - EUT Test Setup 1.1 Radiated Emission 9kHz-30MHz: 30MHz-1GHz: FCC ID: 2AOAF-240 1.2 Conducted Emission ...

lang:en **score:15** filesize: 204.64 K page_count: 2 document date: 2020-09-29



[\[pdf\]](#) Product Photos Teardown

Microsoft Word QITRPVTGY T Internal photos Administrator TYLT inc 240 Wireless Charge 2AOAF
2AOAF240

FCC ID: 2AOAF-240 FCC ID: 2AOAF-240 FCC ID: 2AOAF-240 ...

lang:en score:15 filesize: 362.86 K page_count: 3 document date: 2020-09-29