

Lepro PR410116-RGB-US

Lepro 40ft RGB LED Strip Lights User Manual

Model: PR410116-RGB-US

[Introduction](#) [What's in the Box](#) [Safety Information](#) [Setup & Installation](#) [Operating Instructions](#) [Maintenance](#) [Troubleshooting](#) [Specifications](#) [Warranty & Support](#)

1. INTRODUCTION

Thank you for choosing Lepro RGB LED Strip Lights. This manual provides detailed instructions for the safe and efficient use of your new LED strip lights. These versatile lights offer a wide range of colors and modes, perfect for enhancing various indoor environments.

40 FT LED Strip Lights with Remote



Figure 1: Lepro 40ft RGB LED Strip Lights in a living room setting.

2. WHAT'S IN THE BOX

Please check the package contents to ensure all items are present:

- 1 x 39.4ft (12m) Non-Waterproof RGB LED Strip
- 1 x 44-Key IR Remote Control
- 1 x 24V Power Adapter (US Plug)

3. SAFETY INFORMATION

Read all safety instructions before installation and use. Keep this manual for future reference.

- **Indoor Use Only:** This product is designed for indoor use and is not waterproof.
- **Power Supply:** Use only the provided 24V power adapter. Using an incorrect power supply may damage the product and void the warranty.
- **Installation Surface:** Ensure the installation surface is clean, dry, and smooth for optimal adhesive performance.
- **Cutting the Strip:** Only cut the LED strip at designated cut marks (every 3 LEDs). Cutting elsewhere

will damage the strip.

- **Avoid Overheating:** Do not coil the LED strip tightly when powered on, as this can cause overheating.
- **Children and Pets:** Keep the product and its components out of reach of children and pets.

4. SETUP & INSTALLATION

Follow these steps for proper installation:

1. **Prepare the Surface:** Clean the desired installation surface thoroughly to remove dust, oil, or moisture. A clean, dry surface ensures strong adhesion.
2. **Measure and Cut (if necessary):** Unroll the LED strip and measure the required length. If shortening is needed, cut the strip only at the designated cut marks, typically indicated by a copper line and a scissor icon, every 3 LEDs.
3. **Attach the Strip:** Peel off the backing from the 3M adhesive tape on the back of the LED strip. Carefully press the strip onto the cleaned surface, ensuring firm contact along its entire length.
4. **Secure with Fixing Clips (Optional):** For added security, especially on textured surfaces or corners, use the provided fixing clips. Secure them at regular intervals or critical points along the strip.
5. **Connect Power:** Connect the LED strip to the IR receiver, and then connect the IR receiver to the 24V power adapter. Plug the power adapter into a standard electrical outlet.
6. **Activate Remote:** Before first use, remove the plastic insulation tab from the battery compartment of the 44-key IR remote control.

Easy to install



① Wipe the surface



② Stick strip light



③ Cut the exceeded length



④ Use fixing clips

Figure 2: Visual guide for LED strip installation steps.

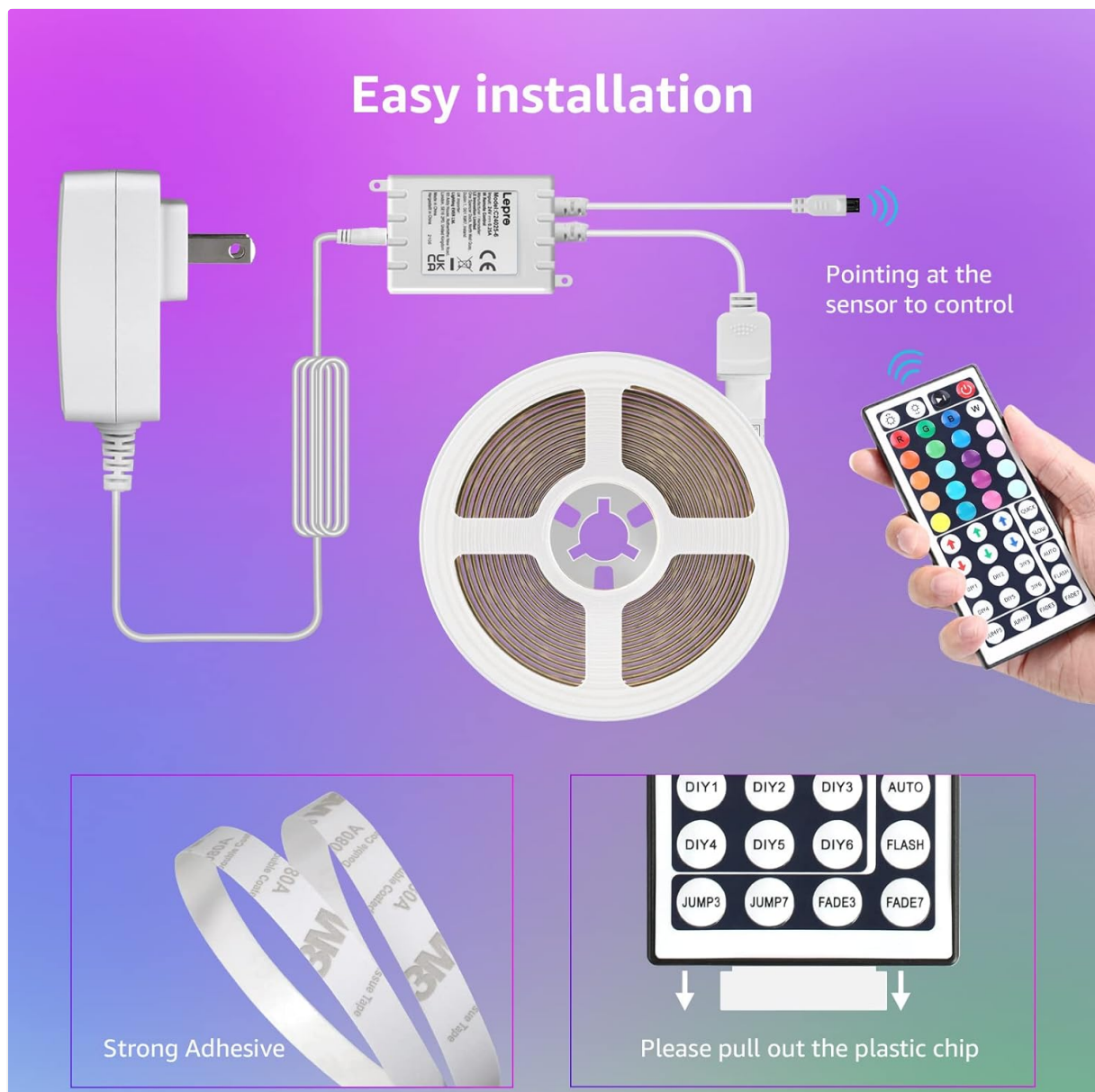


Figure 3: Connection diagram and remote activation.



Figure 4: 3M Adhesive and Fixing Clips.

5. OPERATING INSTRUCTIONS

Control your LED strip lights using the included 44-key IR remote control. Ensure the remote is pointed directly at the IR receiver for optimal response.

-  8 Dynamic Modes
-  Brightness Adjustable
-  20 Vivid Colours
-  6 DIY Colours

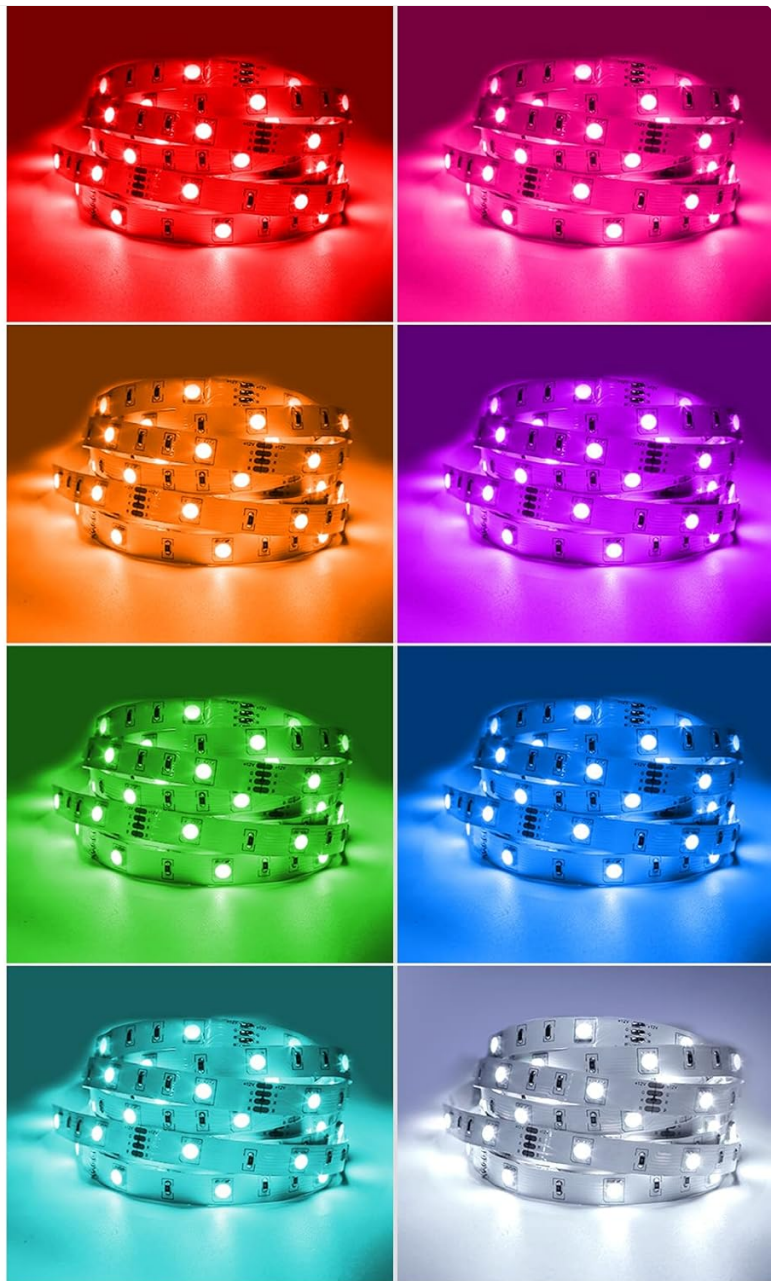
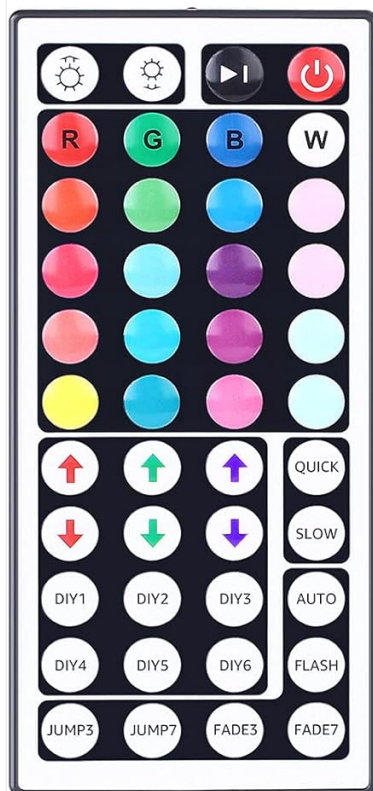


Figure 5: 44-Key IR Remote Control Layout.

Remote Control Functions:

- **On/Off:** Power button to turn the lights on or off.
- **Brightness Adjustment:** Use the ↑ and ↓ buttons to increase or decrease brightness.
- **Color Selection:** Choose from 16 preset static colors, including Red, Green, Blue (RGB), and White.
- **DIY Colors:** 6 programmable DIY buttons allow you to save your favorite custom color mixes.
 - Press a **DIY** button.
 - Use the ↑ and ↓ arrows next to R, G, B to adjust the intensity of each primary color.
 - Press the same **DIY** button again to save your custom color.
- **Mode Selection:** Select from 8 dynamic modes (e.g., Flash, Fade, Jump) to create different lighting effects.
 - **FLASH:** Jumps between colors.
 - **FADE3/FADE7:** Fades between 3 or 7 colors.
 - **JUMP3/JUMP7:** Jumps between 3 or 7 colors.

- **AUTO:** Cycles through all modes.
- **QUICK/SLOW:** Adjusts the speed of dynamic modes.

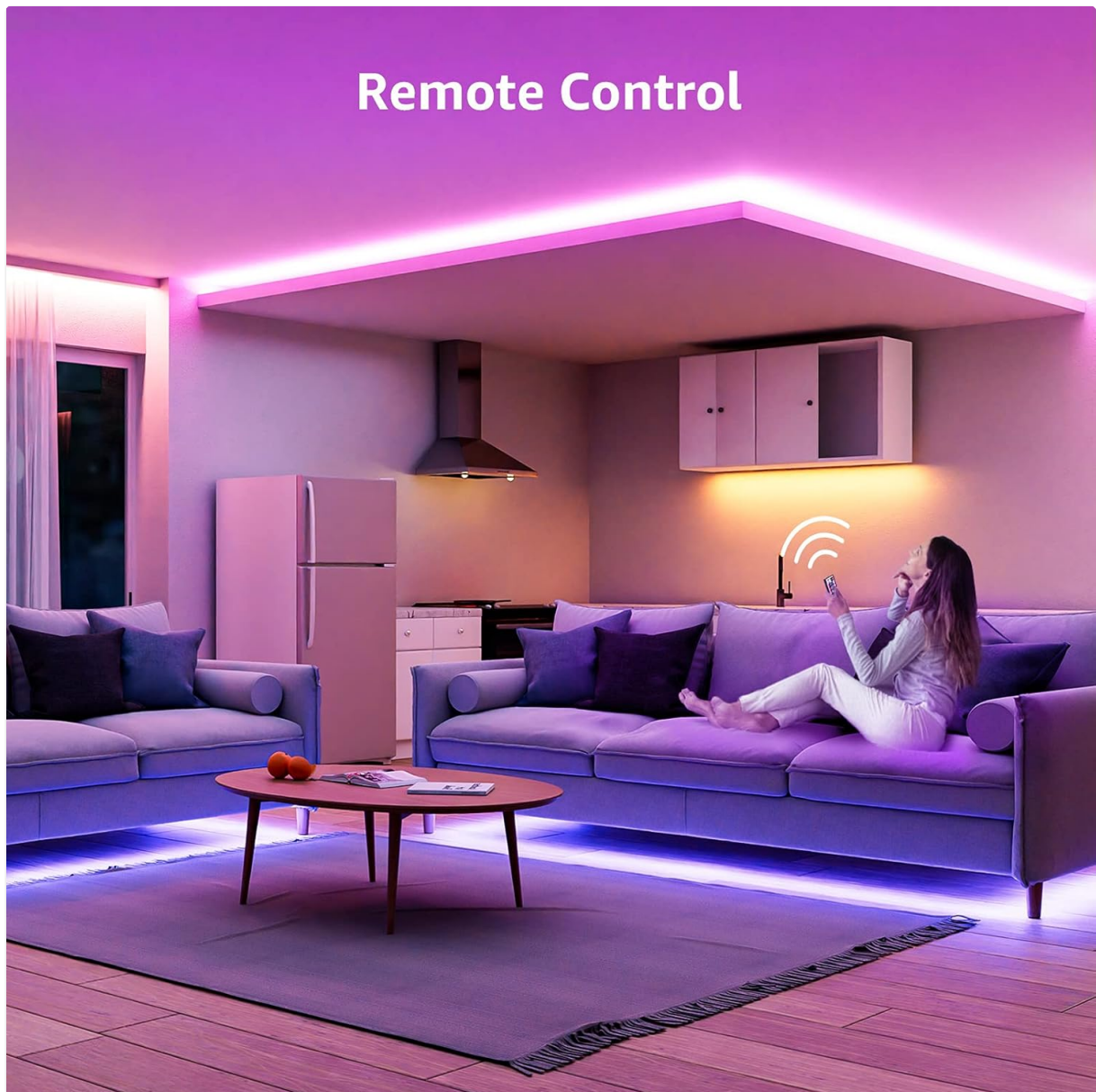


Figure 6: Remote control in use for ambient lighting.

6. MAINTENANCE

Proper maintenance ensures the longevity of your LED strip lights.

- **Cleaning:** Gently wipe the LED strip with a soft, dry cloth to remove dust. Do not use liquid cleaners or immerse the strip in water.
- **Storage:** If storing the lights for an extended period, ensure they are clean, dry, and coiled loosely to prevent damage.
- **Avoid Bending:** Do not bend the LED strip sharply, especially at the connection points, as this can damage the internal circuitry.

7. TROUBLESHOOTING

If you encounter issues, refer to the following common problems and solutions:

Problem	Possible Cause	Solution
Lights do not turn on.	Power adapter not connected. Remote battery dead or plastic tab not removed. IR receiver blocked.	Ensure all connections are secure and power adapter is plugged in. Remove plastic tab from remote battery. Replace battery if needed. Ensure remote is pointed at the IR receiver without obstruction.
Remote control is unresponsive.	Remote battery low/dead. Remote too far or not aimed at IR receiver.	Replace remote battery. Ensure remote is within range and pointed directly at the IR receiver.
Colors are incorrect or inconsistent.	Damaged LED segment. Loose connection.	Check for physical damage on the strip. Verify all connections are firm.

8. SPECIFICATIONS

Feature	Detail
Brand	Lepro
Model Number	PR410116-RGB-US
Light Source Type	LED (5050 SMD)
Light Color	RGB (Red, Green, Blue) + White, 16 Multicolored Options, 6 DIY Colors
Length	39.4 ft (12m)
Voltage	24 Volts (Power Adapter)
Wattage	18 Watts (Max Compatible)
Control Method	44-Key IR Remote Control
Special Feature	Color Changing, Dimmable, 8 Dynamic Modes
Indoor/Outdoor Usage	Indoor Only
Material	Copper, Plastic
Item Weight	9.6 ounces
Color Rendering Index (CRI)	85.00



9. WARRANTY & SUPPORT

Lepro products are designed for reliability and performance. For specific warranty details and customer support, please refer to the warranty card included with your product or visit the official Lepro website.

Contact Information:

- **Website:** www.lepro.com (Please check the official website for the most up-to-date contact information.)
- **Email:** Refer to product packaging or website.