

## usogood DL501

# usogood DL501 Trail Camera User Manual

[WiFi 24MP/1296P] Game Camera with IR Night Vision & APP Control

## 1. INTRODUCTION

Thank you for choosing the usogood DL501 Trail Camera. This advanced wildlife camera is designed to capture high-quality photos and videos of wildlife, monitor property, or observe plant growth. Featuring built-in WiFi and phone APP control, 24MP photos, 1296P video, and no-glow night vision, it provides reliable performance in various outdoor conditions. Please read this manual thoroughly before operation to ensure proper use and optimal performance.



Figure 1: usogood DL501 Trail Camera with WiFi connectivity feature.

## 2. PRODUCT OVERVIEW

The usogood DL501 is a robust and versatile trail camera built for outdoor use. Its key features include:

- **Built-in WiFi and Phone APP Control:** Connect to the camera's WiFi via a dedicated app to easily set parameters, preview live footage, and download media directly to your smartphone within a 10m range.
- **High-Resolution Imaging:** Captures 24MP still pictures and 1296P clear videos with automatic day/night sensors.
- **No-Glow Night Vision:** Equipped with 34pcs 940nm invisible IR LEDs for discreet recording up to 20 meters (65ft) in complete darkness, ensuring animals are undisturbed.
- **Fast Trigger Speed & Wide Detection:** Features a rapid 0.2-second trigger speed and three PIR sensors providing a 120° ultra-wide detection angle, capturing every moment.
- **Durable and Weatherproof:** IP66 waterproof rating ensures reliable operation in various weather conditions, including rain and snow.



Figure 2: Super Night Vision in action, capturing clear images in low light.

### 3. PACKAGE CONTENTS

Verify that all items are present in your package:

- usogood DL501 Trail Camera
- Mounting Strap
- Mounting Hardware (screws, wall anchors)
- USB Cable
- User Manual (this document)
- Remote Control (wearable wristband style)

*Note: SD card (up to 128GB) and 8 AA batteries are not included and must be purchased separately.*





Figure 3: Front view of the usogood DL501 Trail Camera.

## 4. SETUP

### 4.1. Installing Batteries and SD Card

1. Open the camera's casing by unlatching the side clips.
2. Insert 8 AA batteries into the battery compartment, ensuring correct polarity (+/-).
3. Insert a Class 10 or higher SD card (up to 128GB) into the SD card slot. Ensure it clicks into place.
4. Close the camera casing securely until the latches click.

### 4.2. Formatting the SD Card

It is highly recommended to format the SD card directly within the camera before first use to ensure compatibility and optimal performance.

1. Turn the camera to "SETUP" mode.
2. Navigate to the "Format" option in the menu using the navigation buttons.
3. Select "Yes" and confirm to format the SD card. All data on the card will be erased.

### 4.3. APP Installation and WiFi Connection

The usogood DL501 features built-in WiFi for remote control and media management via a smartphone app.

1. Download the "Hunting Cam Pro" app from your smartphone's app store (Google Play for Android, Apple App Store for iOS).
2. Turn the camera to "ON" mode.
3. On the camera, manually turn on the WiFi. This can often be done by pressing a specific button or through the camera's menu.
4. On your smartphone, go to WiFi settings and connect to the camera's WiFi network (SSID: Hunting Camera, Password: 12345678).

5. Open the "Hunting Cam Pro" app. Once connected, you can view live footage, adjust settings, and download files.

Your browser does not support the video tag.

Video 1: Guide on how to connect the usogood DL501 game camera to a cell phone via WiFi.



Figure 4: WiFi connection allows remote viewing and control.

## 5. OPERATING THE CAMERA

### 5.1. Modes of Operation

- **OFF Mode:** The camera is powered off. Use this mode when installing/removing batteries or the SD card.
- **SETUP Mode:** Allows you to access the camera's menu, change settings, format the SD card, and preview captured media.
- **ON Mode:** The camera is active and will capture photos or videos based on detected motion or programmed schedule. The indicator light will flash a few times before turning off, indicating it's ready for operation.

### 5.2. Basic Settings

In SETUP mode, use the navigation buttons to adjust the following common settings:

- **Mode:** Photo, Video, or Photo+Video.
- **Image Size:** 24MP, 20MP, 16MP, 12MP, 8MP, 5MP.
- **Video Resolution:** 1296P, 1080P, 720P, 480P.
- **PIR Sensitivity:** High, Medium, Low (adjusts motion detection range).
- **IR LED:** Auto (for night vision).
- **Trigger Interval:** Sets the delay between consecutive triggers.



- **Time Lapse:** Enables time-lapse photography for long-term observation.
- **Timer:** Sets specific times for the camera to be active.

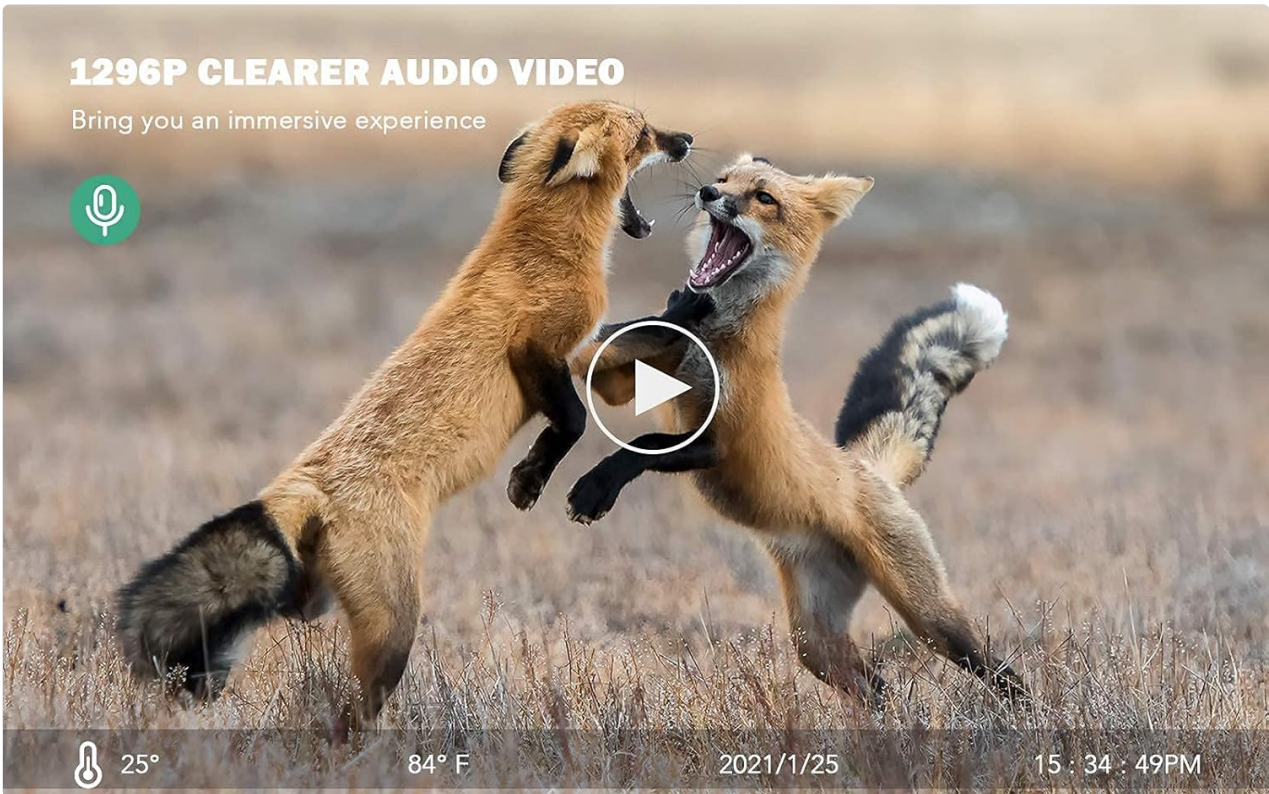


Figure 5: High-resolution video capture for detailed wildlife observation.

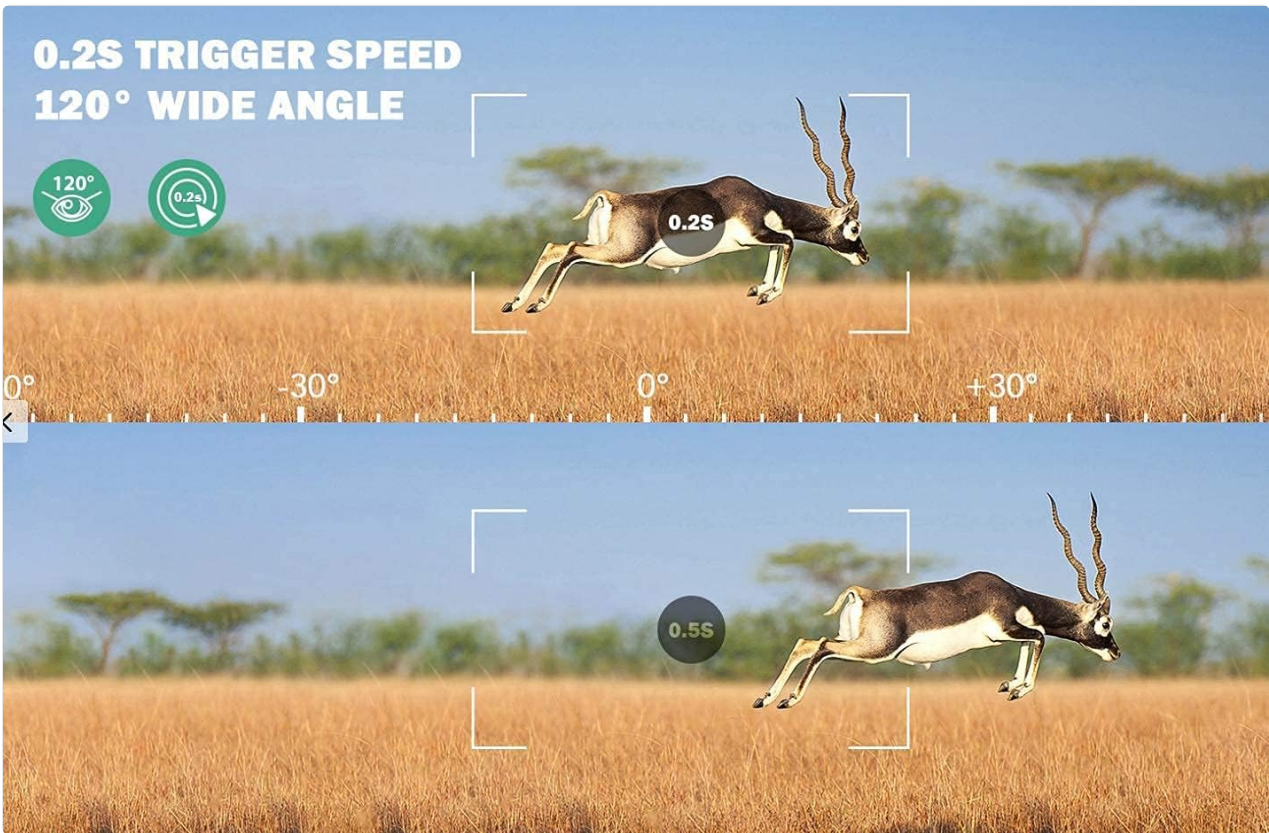


Figure 6: Fast trigger speed ensures no moment is missed.



## 6. MAINTENANCE

- **Cleaning:** Use a soft, dry cloth to clean the camera lens and PIR sensors. Avoid abrasive cleaners or solvents.
- **Battery Replacement:** Replace all batteries when the low battery indicator appears. Do not mix old and new batteries or different battery types.
- **SD Card Management:** Regularly check the SD card capacity and transfer important files to a computer. Format the SD card periodically to maintain optimal performance.
- **Storage:** When not in use for extended periods, remove batteries and the SD card. Store the camera in a cool, dry place.

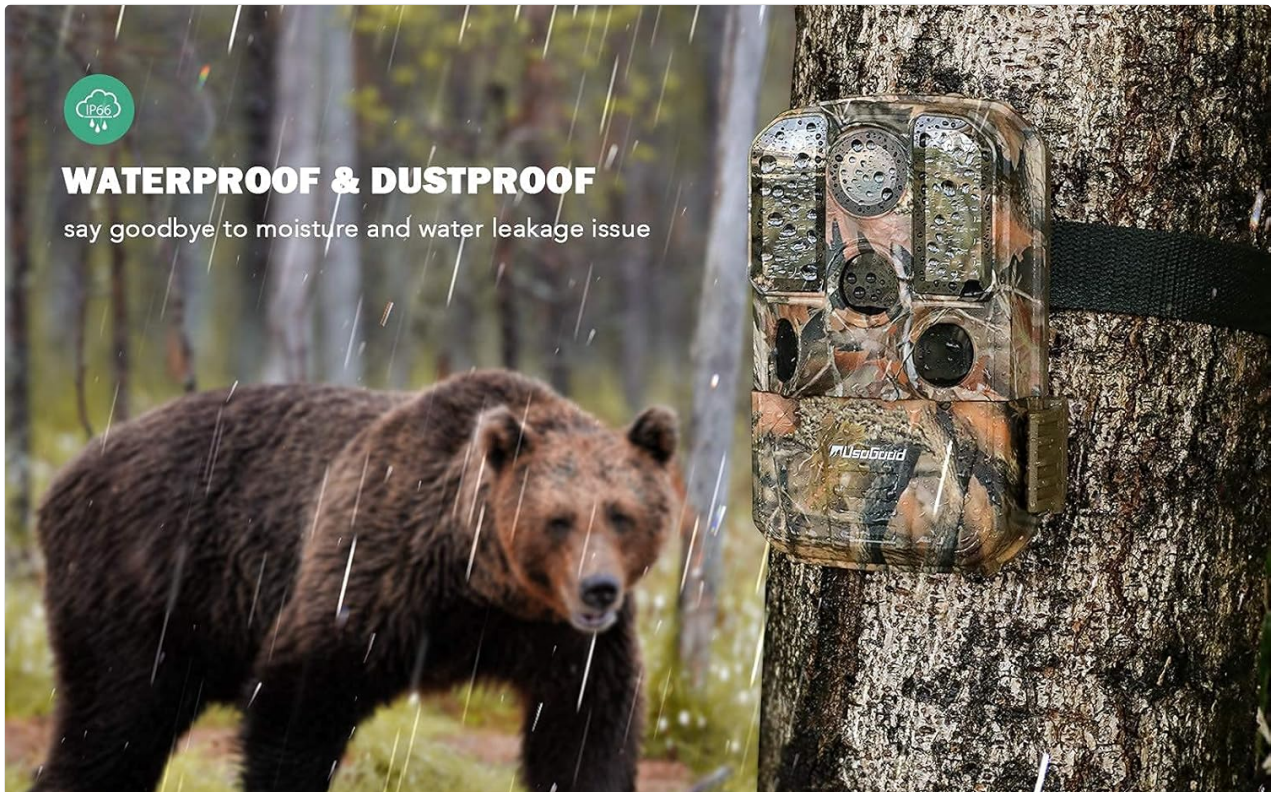


Figure 7: The camera's IP66 rating ensures durability against the elements.

## 7. TROUBLESHOOTING

Problem	Possible Cause	Solution
Camera not turning on	Low or no batteries; incorrect battery polarity.	Replace all batteries with new ones; ensure correct polarity.
Camera not taking photos/videos	SD card full or not formatted; incorrect settings; PIR sensor blocked.	Format SD card; check settings (Mode, PIR Sensitivity); clear sensor area.
Poor night vision images	IR LEDs obstructed; object too far/close.	Ensure IR LEDs are clear; adjust camera distance to subject.

Problem	Possible Cause	Solution
WiFi connection issues	Out of range; incorrect password; app not updated.	Move closer to camera (within 10m); re-enter password (12345678); update app.

## 8. SPECIFICATIONS

Feature	Detail
Brand	usogood
Model	DL501
Photo Resolution	24MP, 20MP, 16MP, 12MP, 8MP, 5MP
Video Resolution	1296P, 1080P, 720P, 480P
Trigger Speed	0.2 seconds
PIR Detection Angle	120 Degrees
Night Vision Range	65 Feet (20 meters)
IR LEDs	34pcs 940nm (No Glow)
Water Resistance Level	IP66 Waterproof
Storage	SD Card (up to 128GB, not included)
Power Source	8 AA Batteries (not included)
Connectivity	Built-in Wi-Fi, USB
Dimensions (L x W x H)	3.54 x 2.05 x 5.24 inches
Item Weight	1.3 pounds



## 24MP IMAGE RESOLUTION

Show you more vivid and clearer details



Figure 8: Comparison of 24MP vs. 12MP image resolution.

## 9. WARRANTY & SUPPORT

usogood offers a **2-year protection plan** for this product, providing repair services within this period. Additionally, a **3-month return policy** is in place to ensure customer satisfaction.

For further assistance, troubleshooting, or warranty claims, please refer to the official usogood user guide PDF available online or contact usogood customer support directly.

Official User Guide (PDF): [Download PDF](#)