

[Manuals.plus](#) /

> [ACM](#) /

> ACM Magnetic Loop Watch Strap User Manual for Michael Kors Mkgo Mkt5072 Smartwatch (Model: WSM4M20BK1141)

## ACM WSM4M20BK1141

# ACM Magnetic Loop Watch Strap User Manual

Model: WSM4M20BK1141

[Installation](#)   [Usage](#)   [Maintenance](#)   [Overview](#)   [Features](#)   [Troubleshooting](#)   [Compatibility](#)   [Specifications](#)   [Setup & Warranty & Support](#)

## 1. OVERVIEW

This manual provides instructions for the ACM Magnetic Loop Watch Strap, designed for smartwatches compatible with 20mm bands, specifically the Michael Kors Mkgo Mkt5072. This premium metal chain band offers a secure and comfortable fit with its magnetic clasp and quick-release mechanism.

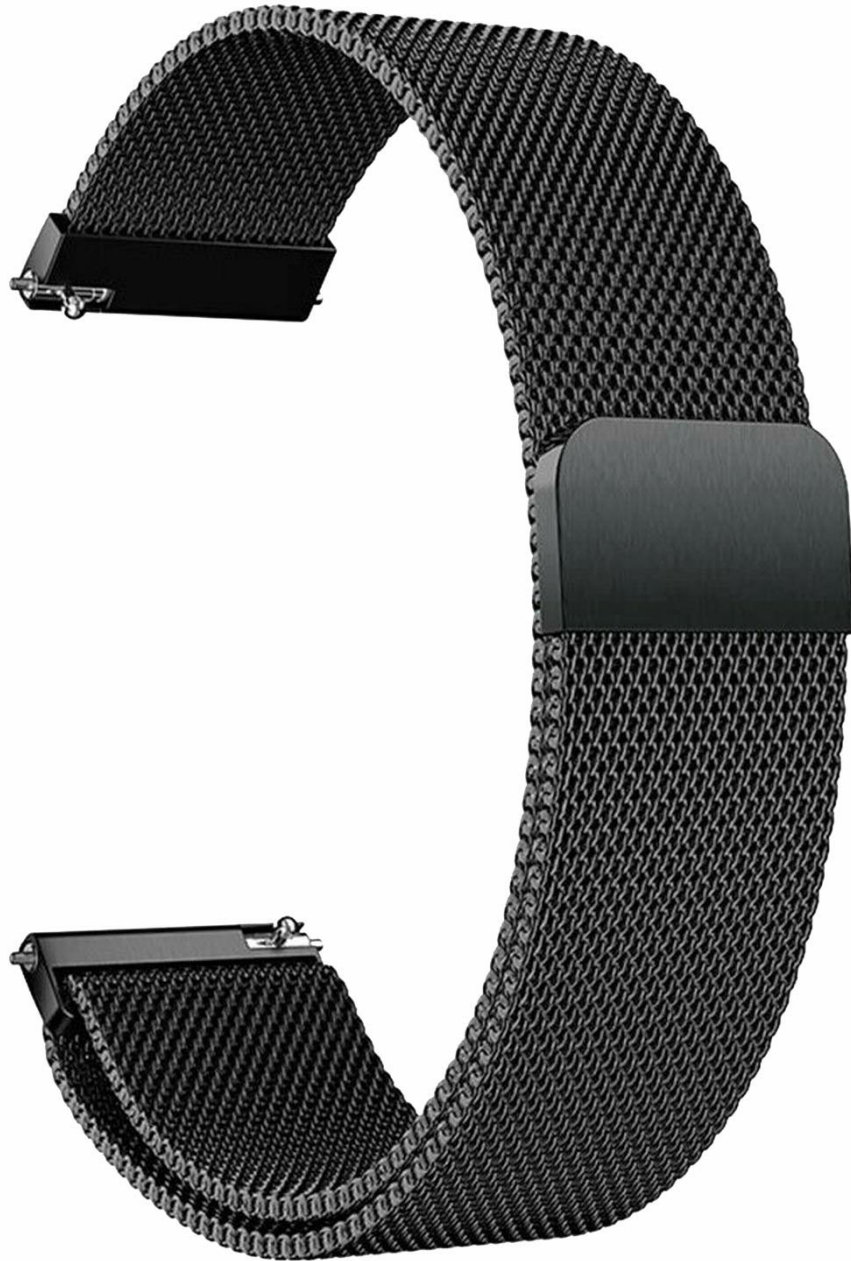


Figure 1: ACM Magnetic Loop Watch Strap (Black) installed on a smartwatch.

## 2. PRODUCT FEATURES

- **Premium Metal Material:** Crafted from high-quality metal for durability and a sophisticated look.
- **Magnetic Loop Design:** Features a strong magnetic clasp for easy and secure adjustment, ensuring the watch stays in place during various activities.
- **Quick Release Pins:** Designed for effortless assembly and removal, allowing for quick strap changes.
- **Durable & Waterproof:** Built to withstand daily wear and tear, including resistance to sweat and water.
- **Comfortable Wear:** Woven mesh stainless steel construction provides a soft, breathable, and comfortable experience on the wrist.



Figure 2: Close-up view of the woven mesh stainless steel material, highlighting its soft and breathable texture.

# Woven Mesh Stainless Steel

Fashion, Soft & Breathable, no hair stuck and comfortable to wear



Figure 3: The strong magnetic clasp ensures the strap remains securely fastened, preventing accidental slip-off.

## 3. COMPATIBILITY

This ACM Magnetic Loop Watch Strap is specifically designed for smartwatches with a **20mm lug width**. It is compatible with the **Michael Kors Mkgo Mkt5072** smartwatch model, among others that use a 20mm strap.



Figure 4: Guide on measuring your smartwatch's lug width to ensure proper strap fit. This strap is designed for 20mm (2cm) lug widths.

## 4. SETUP & INSTALLATION

The ACM Magnetic Loop Watch Strap features quick-release pins for easy installation and removal. Follow these steps to attach or detach your watch strap:

1. **Remove Existing Strap:** If you have an existing strap, locate the quick-release pin on the underside of the strap where it connects to the watch. Slide the pin inwards to release one side, then gently pull the strap away from the watch. Repeat for the other side.
2. **Prepare New Strap:** Take one half of the ACM Magnetic Loop Watch Strap. Ensure the quick-release pin is properly seated within the strap.
3. **Attach First Side:** Insert one end of the quick-release pin into the lug hole on one side of your smartwatch.
4. **Secure First Side:** While holding that end in place, slide the quick-release lever inwards to retract the pin.

Align the other end of the pin with the opposite lug hole and release the lever. Gently tug on the strap to ensure it is securely locked into place.

5. **Attach Second Side:** Repeat steps 3 and 4 for the second half of the watch strap.
6. **Adjust Fit:** Once both halves are attached, wrap the magnetic loop around your wrist and adjust the magnetic clasp for a comfortable and secure fit.

Your browser does not support the video tag.

Video 1: Visual guide demonstrating the quick-release pin mechanism for easy installation and removal of the watch strap.



Figure 5: The quick-release pin allows for simple and tool-free strap changes.

## 5. USAGE

The ACM Magnetic Loop Watch Strap is versatile and suitable for various activities:

- **Daily Wear:** Provides a comfortable and stylish option for everyday use.
- **Sports & Workout:** The secure magnetic clasp ensures the strap stays in place during physical activities. Its durable and waterproof features make it suitable for active lifestyles.
- **Business & Leisure:** The sleek metal chain design offers a professional and elegant look for business settings or casual outings.



Figure 6: The strap is designed for comfort and a gentle feel around your wrist.

## 6. MAINTENANCE

To ensure the longevity and appearance of your ACM Magnetic Loop Watch Strap, follow these maintenance guidelines:

- **Cleaning:** Wipe the strap regularly with a soft, damp cloth to remove dirt, sweat, and oils. For stubborn stains, a mild soap solution can be used, followed by rinsing with clean water and thorough drying.
- **Drying:** Ensure the strap is completely dry before reattaching it to your smartwatch or wearing it, especially after exposure to water.
- **Avoid Harsh Chemicals:** Do not use abrasive cleaners, solvents, or strong detergents, as these can damage the metal finish.
- **Storage:** When not in use, store the strap in a clean, dry place away from direct sunlight and extreme temperatures.
- **Magnetic Care:** Keep the magnetic clasp away from sensitive electronic devices or magnetic stripe cards to prevent potential interference or demagnetization.

## 7. TROUBLESHOOTING

### 7.1. Strap Not Attaching Securely

- **Check Pin Alignment:** Ensure the quick-release pins are correctly aligned with the lug holes on your smartwatch.
- **Verify Pin Functionality:** Make sure the quick-release pins retract and extend smoothly. If a pin is bent or damaged, it may need replacement.
- **Correct Strap Size:** Confirm that you have the correct 20mm strap size for your smartwatch model.

### 7.2. Magnetic Clasp Issues

- **Clean Magnet:** Ensure the magnetic surface is clean and free from debris that might hinder its grip.
- **Proper Placement:** Make sure the magnetic clasp is positioned correctly for optimal hold.

## 8. SPECIFICATIONS

<b>Brand</b>	ACM
<b>Model Number</b>	WSM4M20BK1141
<b>Material</b>	Metal (Woven Mesh Stainless Steel)
<b>Compatible Devices</b>	Michael Kors Mkgo Mkt5072 (and other 20mm lug width smartwatches)
<b>Special Features</b>	Durable, Waterproof, Magnetic Clasp, Quick Release

<b>Item Weight</b>	40 g
<b>Country of Origin</b>	China
<b>Manufacturer</b>	Accessoriesmasters

## 9. WARRANTY & SUPPORT

---

For warranty information or technical support regarding your ACM Magnetic Loop Watch Strap, please refer to the product packaging or contact the manufacturer directly. Keep your purchase receipt as proof of purchase.

Manufacturer Contact: Accessoriesmasters, 203 Aashirwad Residency, New Sama Road, Baroda 390008.