

CENMING FAN28R FAN-HD

Universal Ceiling Fan Remote Control and Receiver Kit Instruction Manual

Model: FAN28R FAN-HD

1. INTRODUCTION

This manual provides comprehensive instructions for the installation, operation, and maintenance of your CENMING Universal Ceiling Fan Remote Control and Receiver Kit. This kit is designed to provide convenient control over your ceiling fan's speed and light functions.



Image: The remote control and receiver unit, showing the compact design of the receiver and the intuitive button layout of the remote.

2. PRODUCT FEATURES

- **Universal Compatibility:** Works with most 110/120V 3-speed AC ceiling fans, including popular brands like Hampton Bay, Hunter, and Harbor Breeze.
- **3-Speed Fan Control:** Offers HI/MED/LO speed settings and an OFF function for precise fan control.
- **Light Dimmer Function:** The LIGHT/DIMMER button controls brightness (On/Off/Dimming) for halogen and incandescent lamps. It also supports On/Off for some dimmable LED lights. Note: Most LED and all CFL lights are not dimmable and will only support On/Off.
- **Powerful Receiver:** Features a rated power of 240W, allowing for more light bulbs and extended receiver life. Uses 2 upgraded relays for improved dimming compared to thyristor-based receivers.
- **Compact Design:** The upgraded receiver is smaller for easier installation.



Product Feature



Image: A hand holding the remote control, with a ceiling fan in the background, illustrating the light and fan speed control features.

3. COMPATIBILITY

This kit is designed for use with 110V/120V 3-speed AC ceiling fans. It is compatible with most downrod style fans. Please note the following regarding light bulb compatibility:

- **Halogen & Incandescent Lamps:** Fully compatible with On/Off and dimming functions.
- **Dimmable LED Lamps:** Compatible with On/Off and some dimming functions.
- **Most LED and all CFL Lamps:** Only support On/Off function; dimming is not supported.

This remote control kit does not include a reverse button. If your fan has a reverse function, it must be controlled via a physical switch on the fan motor housing.



Compatibility



❌ Not recommended for use with wall mounted fans or exhaust-type fans



✅ Compatible with most downrod style fans



❌ Not Compatible CFL Lamps



⚠️ Compatible Some LED Lamps



✅ Halogen & Incandescent Lamps

Note:

Compatible with incandescent light bulbs and some dimmable LED lamps, other LED and all CFL lamps only support ON and OFF function.

Image: A visual guide indicating compatibility with downrod ceiling fans and various light bulb types (incandescent, some LED, not CFL).

4. SAFETY WARNINGS

WARNING: HIGH VOLTAGE!

- Always disconnect power by removing the fuse or switching off the circuit breaker before installation or maintenance.
- Do not use with solid state fans.
- Electrical wiring must meet all local and national electrical code requirements.
- Supply for the fan must be 110/120 volt, 60Hz.
- Maximum fan motor amps: 1.0.
- Maximum light watts: 240 (incandescent only).
- Failure to follow these instructions may result in serious injury or death.



Installation and Setup



WARNING

Safety precautions:

WARNING: HIGH VOLTAGE!

Disconnect power by removing fuse or switching off circuit breaker.

Do not use with solid state fans.

Electrical wire must meet all local and national electrical code requirements.

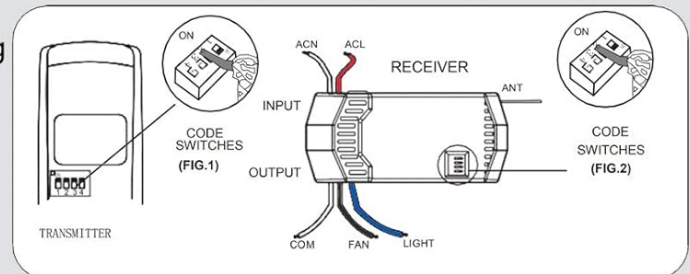
Supply for fan must be 110/120 volt, 60Hz.

Maximum fan motor amps: 1.0,

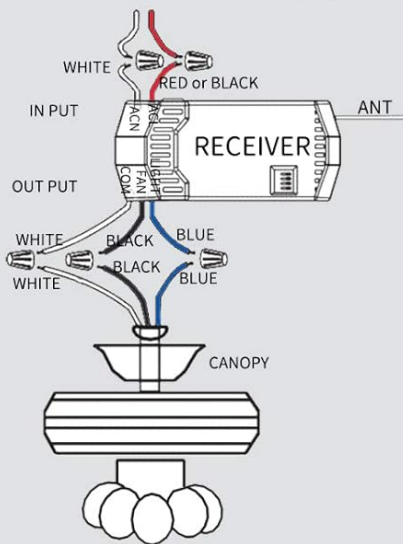
Maximum light watts: 240-(incandescent only).

Otherwise power can cause serious injury or death.

1. SETTING THE CODES



2. INSTALLING RECEIVER IN CEILING FAN



3. OPERATING TRANSMITTER

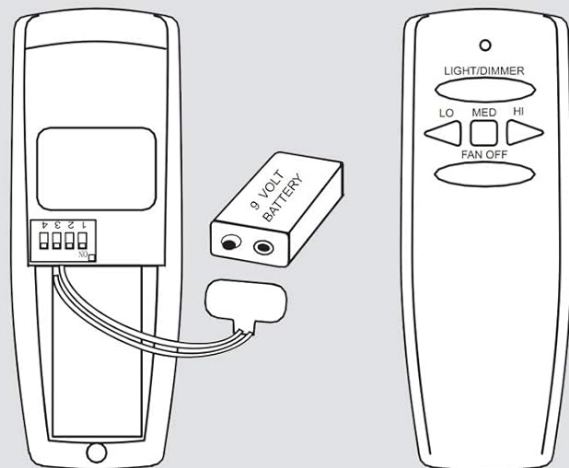


Image: A diagram illustrating the installation steps, prominently featuring a warning about high voltage and safety precautions.

5. INSTALLATION AND SETUP

5.1. Setting the Codes

To ensure proper communication between the remote control (transmitter) and the receiver, you must set the same codes on both devices. The factory setting is typically all switches in the 'up' position, but it is recommended to choose a different combination to avoid interference with other remote-controlled devices.

1. Open the battery compartment of the remote control.
2. Locate the DIP switches inside the remote control.
3. Locate the DIP switches on the receiver unit.
4. Set the switches on both the remote and the receiver to an identical pattern.



Setting the Codes



- Note:** 1, Setting the same codes on the transmitter and the receiver, factory setting is all up, but do not use this position.
- 2, This remote uses a 9V battery (NOT INCLUDE) for power supply.

Image: A detailed view of the DIP switches on both the remote control and the receiver, highlighting the importance of matching their settings.

5.2. Installing Receiver in Ceiling Fan

Follow these steps to install the receiver into your ceiling fan. Refer to the wiring diagram for correct connections.

1. **Before you begin:** Ensure power is disconnected at the circuit breaker.
2. If your ceiling fan has a pull chain switch, set the fan speed to maximum and turn the fan light ON using the pull chains before installing the receiver. This allows the remote control to function properly.
3. Connect the receiver wires to the fan and household wiring according to the provided diagram. Use the included wire nuts for secure connections.
4. Carefully tuck the receiver into the fan canopy.
5. Secure the fan canopy.
6. Restore power at the circuit breaker.



Installation and Setup



WARNING

Safety precautions:

WARNING: HIGH VOLTAGE!

Disconnect power by removing fuse or switching off circuit breaker.

Do not use with solid state fans.

Electrical wire must meet all local and national electrical code requirements.

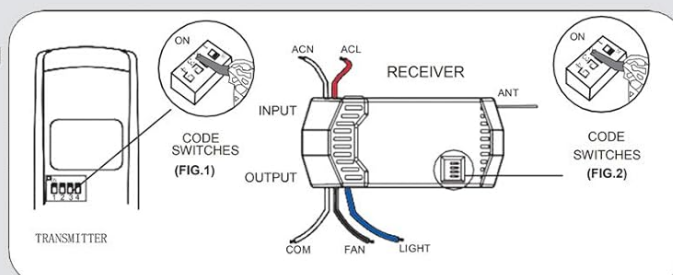
Supply for fan must be 110/120 volt, 60Hz.

Maximum fan motor amps: 1.0,

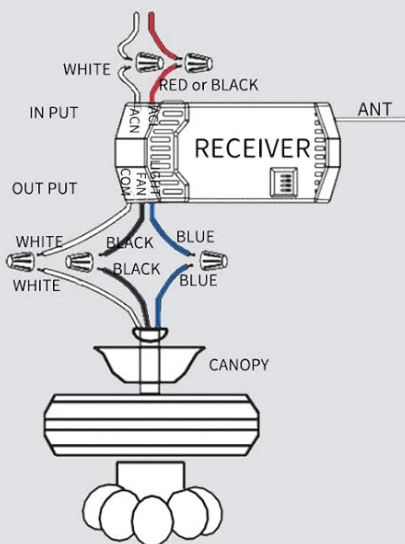
Maximum light watts: 240-(incandescent only).

Otherwise power can cause serious injury or death.

1. SETTING THE CODES



2. INSTALLING RECEIVER IN CEILING FAN



3. OPERATING TRANSMITTER

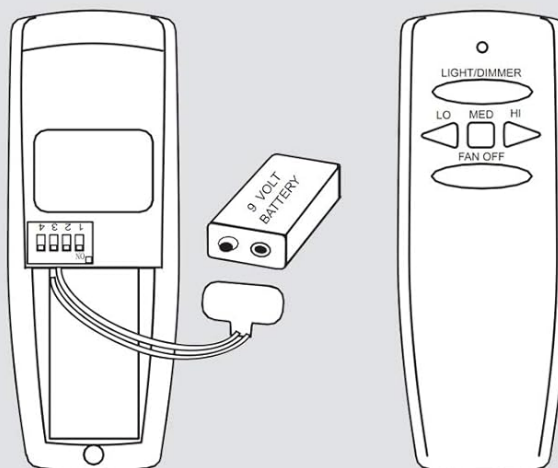


Image: A clear wiring diagram showing how to connect the receiver to the ceiling fan and household electrical system.

6. OPERATING INSTRUCTIONS

The remote control operates on a 9V battery (not included). Insert the battery into the remote control's battery compartment, observing polarity.

- **LIGHT / DIMMER:** Press to turn the light On/Off. Press and hold to dim or brighten compatible lights.
- **HI:** Sets fan speed to High.
- **MED:** Sets fan speed to Medium.
- **LO:** Sets fan speed to Low.
- **FAN OFF:** Turns the fan off.



Installation and Setup



WARNING

Safety precautions:

WARNING: HIGH VOLTAGE!

Disconnect power by removing fuse or switching off circuit breaker.

Do not use with solid state fans.

Electrical wire must meet all local and national electrical code requirements.

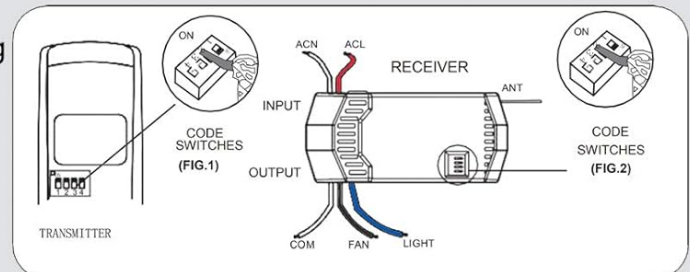
Supply for fan must be 110/120 volt, 60Hz.

Maximum fan motor amps: 1.0,

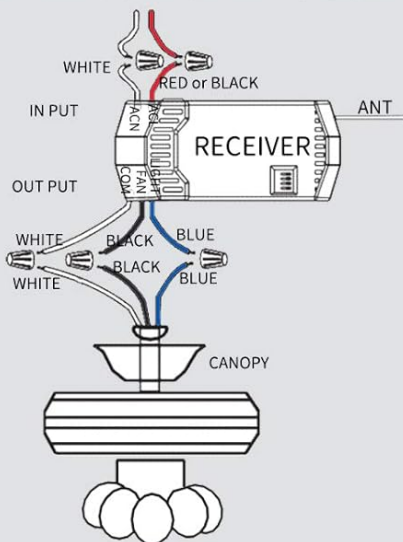
Maximum light watts: 240-(incandescent only).

Otherwise power can cause serious injury or death.

1. SETTING THE CODES



2. INSTALLING RECEIVER IN CEILING FAN



3. OPERATING TRANSMITTER

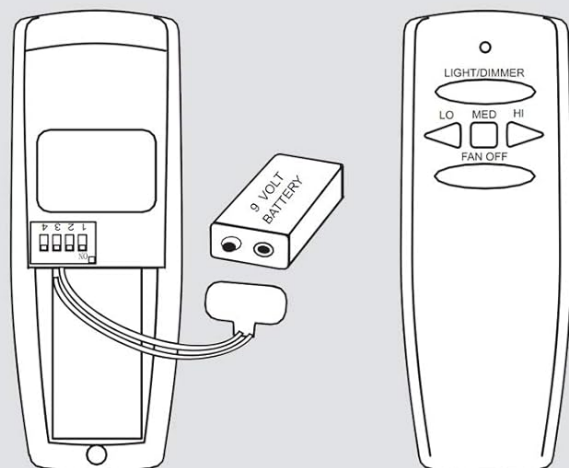


Image: A diagram illustrating the remote control's layout and the functions of each button for fan and light operation.

7. MAINTENANCE

To ensure optimal performance and longevity of your remote control kit, follow these simple maintenance guidelines:

- **Cleaning:** Wipe the remote control and receiver with a soft, dry cloth. Do not use abrasive cleaners or solvents.
- **Battery Replacement:** Replace the 9V battery in the remote control when its performance diminishes or the indicator light no longer illuminates.
- **Storage:** If storing the remote for an extended period, remove the battery to prevent leakage.

8. TROUBLESHOOTING

If you experience issues with your remote control kit, try the following troubleshooting steps:

Problem	Possible Cause	Solution
Fan or light does not respond to remote.	No power to receiver. Incorrect DIP switch settings. Dead or low battery in remote. Loose wiring connection. Fan pull chain not set correctly.	Check circuit breaker and wall switch. Verify DIP switch settings match on remote and receiver. Replace 9V battery in remote. Check all wiring connections (ensure power is off first). Ensure fan pull chain is on HIGH and light pull chain is ON.
Light does not dim.	Incompatible light bulb type (LED/CFL). Light bulb is not dimmable.	Use incandescent or dimmable LED bulbs. Confirm your LED bulb is specifically marked as dimmable.
Interference from other devices.	DIP switch code conflicts with nearby remote devices.	Change the DIP switch settings on both the remote and receiver to a new, unique combination.

9. SPECIFICATIONS

- **Model Number:** FAN28R FAN-HD
- **Product Dimensions:** 6.1 x 5 x 1.5 inches
- **Item Weight:** 8.8 ounces
- **Power Supply (Remote):** 1 x 9V battery (not included)
- **Rated Power (Receiver):** 240W
- **Max Fan Motor Amps:** 1.0
- **Max Light Watts:** 240W (incandescent only)
- **Compatible Devices:** 110V 3-Speed AC Ceiling Fan
- **Color:** White



Product Size



Image: A diagram illustrating the physical dimensions of both the remote control and the receiver unit.

10. PACKAGE CONTENTS

The CENMING Universal Ceiling Fan Remote Control and Receiver Kit includes the following items:

- 1 x Remote Control
- 1 x Remote Holder
- 1 x Receiver
- 6 x Wire Nuts
- 2 x Screws
- 1 x User Manual (this document)



Packing List

① Remote control



② Wall mount holder



③ Plastic wire connector and screws



④ Receiver



⑥ Packing box



⑤ User manual

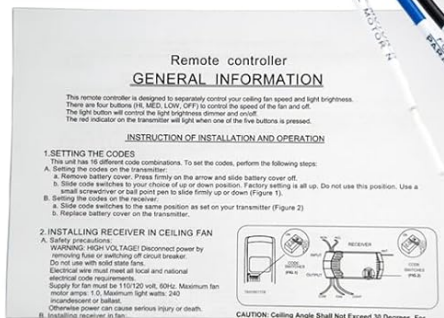
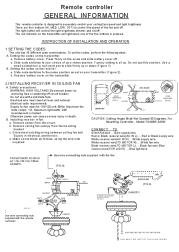


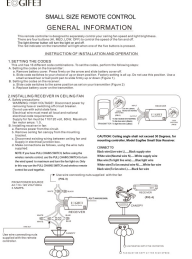


Image: A visual representation of all items included in the product packaging, such as the remote, receiver, holder, wire nuts, and screws.

11. WARRANTY AND SUPPORT

CENMING is committed to product quality and customer satisfaction. While specific warranty details are not provided in this manual, we encourage you to contact us directly for any support needs or inquiries regarding your product. For assistance, please visit the [CENMING Store on Amazon](#) or refer to your purchase documentation for contact information.

	<p>Universal Ceiling Fan Remote Control and Receiver Installation and Operation Guide</p> <p>This guide provides instructions for installing and operating a universal ceiling fan remote control kit, including setting codes, wiring the receiver, operating the transmitter, and troubleshooting common issues. It covers models like FAN28R and FAN-53T.</p>
	<p>CENMING FAN28R Ceiling Fan Remote Control Receiver Installation Guide</p> <p>Detailed installation and operation guide for the CENMING FAN28R Ceiling Fan Remote Control Receiver. Learn how to set codes, wire the 240w, 303.9MHz receiver, and control fan speed and light. Includes safety precautions and replacement information for various fan models.</p>
	<p>CENMING Universal Thermostatic Ceiling Fan Remote Control Kit - Use and Care Guide</p> <p>Comprehensive guide for the CENMING Universal Thermostatic Ceiling Fan Remote Control Kit, covering safety information, pre-installation, installation, operation, and troubleshooting. Includes details on setting codes, wiring, and remote functions.</p>
	<p>Eogiffee Small Size Remote Control for Ceiling Fans - User Manual</p> <p>Comprehensive guide for installing and operating the Eogiffee Small Size Universal Ceiling Fan Remote Control and Receiver. Learn how to set codes, wire the receiver, operate the transmitter, and troubleshoot common issues.</p>