

TEXAS GS1680Li

TEXAS GS1680Li Battery-Powered Pruning Shears User Manual

Model: GS1680Li (90063145)

1. INTRODUCTION

This manual provides essential information for the safe and efficient operation, maintenance, and troubleshooting of your TEXAS GS1680Li Battery-Powered Pruning Shears. Please read this manual thoroughly before using the product and keep it for future reference. This tool is designed for pruning branches up to 25mm in diameter.

2. GENERAL SAFETY INSTRUCTIONS

Always observe basic safety precautions to reduce the risk of fire, electric shock, and personal injury. Failure to follow these instructions may result in serious injury.

- **Work Area Safety:** Keep the work area clean and well-lit. Cluttered or dark areas invite accidents. Do not operate power tools in explosive atmospheres, such as in the presence of flammable liquids, gases, or dust.
- **Electrical Safety:** Avoid body contact with earthed or grounded surfaces. Do not expose power tools to rain or wet conditions.
- **Personal Safety:** Always wear eye protection and appropriate protective clothing. Stay alert, watch what you are doing, and use common sense when operating a power tool.
- **Tool Use and Care:** Do not force the power tool. Use the correct power tool for your application. Disconnect the battery pack from the power tool before making any adjustments, changing accessories, or storing power tools.
- **Battery Tool Use and Care:** Recharge only with the charger specified by the manufacturer. Use power tools only with specifically designated battery packs.

3. PRODUCT COMPONENTS

Familiarize yourself with the parts of your TEXAS GS1680Li pruning shears and included accessories.



Figure 3.1: The TEXAS GS1680Li battery-powered pruning shears, showcasing its ergonomic design and sharp bypass blades.



Figure 3.2: All components included with the TEXAS GS1680Li pruning shears: the shears unit, battery, battery charger, sharpening stone, screwdriver, wrench, and a small bottle of lubricating oil.



Figure 3.3: Rear view of the TEXAS GS1680Li pruning shears, showing the battery compartment and product labeling.

- **Pruning Shears Unit:** The main body with bypass blades.
- **Battery Pack:** Rechargeable power source.
- **Battery Charger:** For recharging the battery.
- **Sharpening Stone:** For blade maintenance.
- **Screwdriver:** For minor adjustments.
- **Wrench:** For blade assembly/disassembly.
- **Lubricating Oil:** For blade lubrication.

4. SETUP

1. **Unpacking:** Carefully remove all components from the packaging. Inspect for any damage.
2. **Battery Installation:** Ensure the battery is fully charged before first use. Align the battery pack with the slot at the base of the shears handle and slide it in until it clicks securely into place.
3. **Initial Check:** Before operation, ensure the blades are clean and free from obstructions.

5. CHARGING THE BATTERY

1. Connect the charger to a standard power outlet.
2. Insert the battery pack into the charger.
3. Observe the indicator light on the charger. It will typically show red during charging and turn green when fully charged.
4. Once fully charged, disconnect the battery from the charger and unplug the charger from the outlet.
5. **Note:** Do not overcharge the battery. Refer to the battery and charger manual for specific charging times and indicators.

6. OPERATING INSTRUCTIONS

1. **Power On:** With the battery securely installed, press and hold the power button (if present) or trigger until the shears activate. Some models may require a double-press of the trigger to activate.

2. **Cutting:** Position the branch to be cut between the open blades. Ensure the branch diameter does not exceed the maximum cutting capacity of 25mm.
3. **Trigger Operation:** Gently squeeze the trigger to close the blades and make the cut. Release the trigger to open the blades.
4. **Safety Lock:** Always engage the safety lock or power off the tool when not actively cutting or when moving between work areas.
5. **Power Off:** To turn off the shears, follow the specific power-off procedure for your model (e.g., press and hold power button, or a sequence of trigger presses). Remove the battery when storing the tool.

7. MAINTENANCE

Regular maintenance ensures optimal performance and extends the life of your pruning shears.

- **Cleaning:** After each use, clean the blades with a dry cloth to remove sap and debris. For stubborn residue, use a specialized blade cleaner.
- **Lubrication:** Apply a few drops of the provided lubricating oil to the pivot point and blade surfaces after cleaning to prevent rust and ensure smooth operation.
- **Sharpening:** Periodically sharpen the blades using the provided sharpening stone. Follow the original blade angle.
Caution: Blades are sharp; handle with care.
- **Storage:** Store the shears in a dry, secure place, out of reach of children. Remove the battery pack before long-term storage.

8. TROUBLESHOOTING

Problem	Possible Cause	Solution
Shears do not turn on.	Battery not charged or not properly installed.	Ensure battery is fully charged and securely inserted. Check power button/trigger activation sequence.
Blades do not cut cleanly.	Blades are dull or dirty.	Clean and sharpen the blades. Lubricate the pivot point.
Shears stop during operation.	Overload protection activated or battery low.	Reduce cutting load. Recharge the battery. Allow the tool to cool down if it overheated.

9. TECHNICAL SPECIFICATIONS


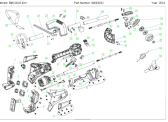


- **Brand:** TEXAS
- **Model:** GS1680Li
- **Model Number:** 90063145
- **Blade Type:** Bypass
- **Maximum Cutting Width:** 25 mm
- **Item Weight:** 1.1 kg
- **Batteries Included:** Yes
- **ASIN:** B08VDFS9N
- **First Available Date:** January 29, 2021

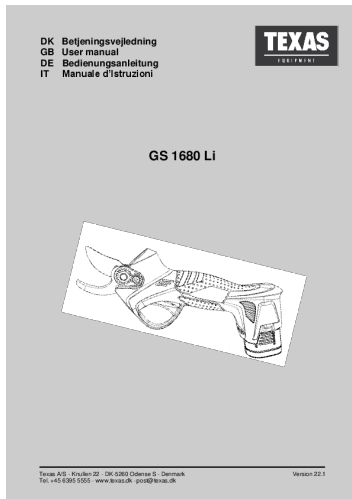
10. WARRANTY AND SUPPORT

For warranty information and customer support, please refer to the documentation provided with your purchase or contact your retailer. Keep your proof of purchase for any warranty claims.



Related Documents

	<p>Texas HFX2000 Cultivator User Manual</p> <p>This user manual provides comprehensive instructions for the safe operation, maintenance, and storage of the Texas HFX2000 cultivator. It includes safety warnings, component identification, assembly steps, battery and charger information, operating procedures, and troubleshooting tips.</p>
	<p>BMX2020 4-in-1 Multi-Tool Parts List and Specifications</p> <p>Comprehensive parts list and technical overview for the TEXAS BMX2020 4-in-1 multi-tool, detailing components, part numbers, and unit specifications.</p>
	<p>Texas BMX 2020 Brushcutter User Manual - Power Equipment</p> <p>Comprehensive user manual for the Texas BMX 2020 brushcutter, detailing safety instructions, assembly, operation, maintenance, and specifications for this versatile power equipment. Includes information on trimmer, hedge trimmer, and pole saw attachments.</p>
	<p>Texas BCU33M/BCU43M Brushcutter User Manual</p> <p>Comprehensive user manual for the Texas BCU33M and BCU43M brushcutters, covering operation, safety, maintenance, and troubleshooting.</p>



[\[pdf\]](#) User Manual

JL Manual 2280298Texas Grensaks inkl batteri GS1680Li 16 8 V Køb Beskrøring onlineManual 2280298webassets silvan dk resources Assets 2280298 |||

DK Betjeningsvejledning GB User manual DE Bedienungsanleitung IT Manuale d Istruzioni DK Betjeningsvejledning GB User manual DE Bedienungsanleitung IT Manuale d Istruzioni GS 1680 Li Texas A/S - Knullen 22 - DK-5260 Odense S - Denmark Tel. 45 6395 5555 - www.texas.dk - post texas.dk Version 22.1 ... lang:de **score:20** filesize: 905 K page_count: 24 document date: 2021-09-17



[\[pdf\]](#) Catalog

Cataloghi dei prodotti sgaravatti scarica ora Sgaravatti Shop TEXAS catalogo Italia 2023 v 1675962432 cdn shopify s files 1 0226 9351 1248 |||

2023 DALLA DANIMARCA, DAL L ECCELLENZA PER LA CURA DEL VERDE 1960 TEXAS IN BREVE Texas Equipment ... a TEXAS da oggi sar pi facile e meno stancante potare gli alberi e gli arbusti del vostro giardino. **GS1680LI** Veloce e potente Design compatto 3 regolazioni di taglio Sensore touch di sicurezza FO... lang:it **score:14** filesize: 9.42 M page_count: 48 document date: 2023-02-01



[\[pdf\]](#) Accessories Catalog

Cataloghi dei prodotti sgaravatti scarica ora Sgaravatti ShopTEXAS catalogue 2021 IT def bassa risoluzionecdn shopify s files 1 0226 9351 1248 TEXAS risoluzione v 1610363207 |||

2021 WWW.TEXAS-GARDEN.COM MACCPRHOIDNUETDTAORGEIADRIDINO - DAL 1960 TEXAS PRODUTTORE DI MACCHINE ... 0.7 kW 26 cc 10-20-30 mm 90062059 EC8700 TG110, 4 tempi 1.8 kW 87 cc 10-25-45 mm 90063088 26 **GS1680LI** Veloce e potente Design compatto 3 regolazioni di taglio Sensore touch di sicurezza NOV...

lang:it **score:13** filesize: 10.44 M page_count: 52 document date: 2020-12-11

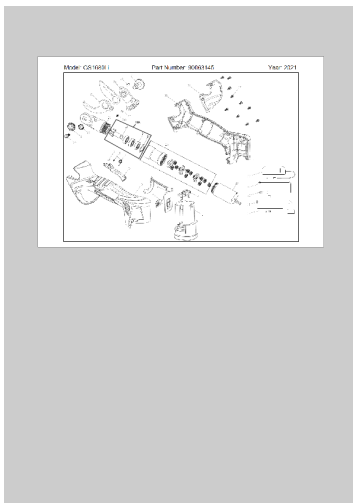


[\[pdf\]](#) Accessories Catalog

catalogo generale delle macchine da giardino di Texas EquipmentCataloghi dei prodotti sgaravatti scarica ora Sgaravatti ShopTEXAS catalogue 2025 IT LOWcdn shopify s files 1 0226 9351 1248 TEXAS LOW v 1736265925 |||

2025 DALLAPEDRALNAIMCA-URDRCAALA19,D60EL LECVCEERLDLEENZA
WWW.TEXAS GARDEN.COM INDICE GAMMA A BAT ... forbici a batteria TEXAS.
Motore Potenza Telescopica Larghezza di taglio Peso Incluso Codice Nr. **GS1680LI**
16.8V 2.0 Ah Max. 25 mm 0.9 kg 2.0 Ah batteria caricabatteria attrezzi 90063145
GS168...

lang:it **score:13** filesize: 19.94 M page_count: 84 document date: 2025-01-07



[\[pdf\]](#)

Lasse W Friedrichsen Spare part drawing GS1680Li spare parts Texas A S 90063145 2021 texas dk
sparepart tegninger haekkeklippere |||

18A POS 1 2 3 4 5 6 7 8 9 10 15 16 17 18 18A 19 20 21 22 23 24 25 26 27 28 29 30
31 32 33 34 35 36 37 QTY 1 1 1 1 1 1 1 1 1 1 1 1 3 1 1 PARTNUMBER 451564
448190 448191 448192 448193 448194 448195 448196 448197 448198 448199
448200 448201 448202 451575 BESKRIVELSE BATTERI 16.8V/2AH BATTERI
STTTE...

lang:i-klngon **score:12** filesize: 278.5 K page_count: 2 document date: 2021-08-23