

Manuals+

[Q & A](#) | [Deep Search](#) | [Upload](#)

[manuals.plus](#) /

› [Tonka](#) /

› [Tonka Steel Classics Road Grader Instruction Manual](#)

Tonka 06129

Tonka Steel Classics Road Grader Instruction Manual

Model: 06129

1. PRODUCT OVERVIEW

The Tonka Steel Classics Road Grader is a durable toy construction vehicle designed for children aged 36 months to 15 years. Constructed with cold-rolled steel and sturdy plastic, this 17-inch road grader features a positionable grading blade for realistic play.



Image: Front-side view of the Tonka Steel Classics Road Grader, showcasing its yellow body and black wheels.

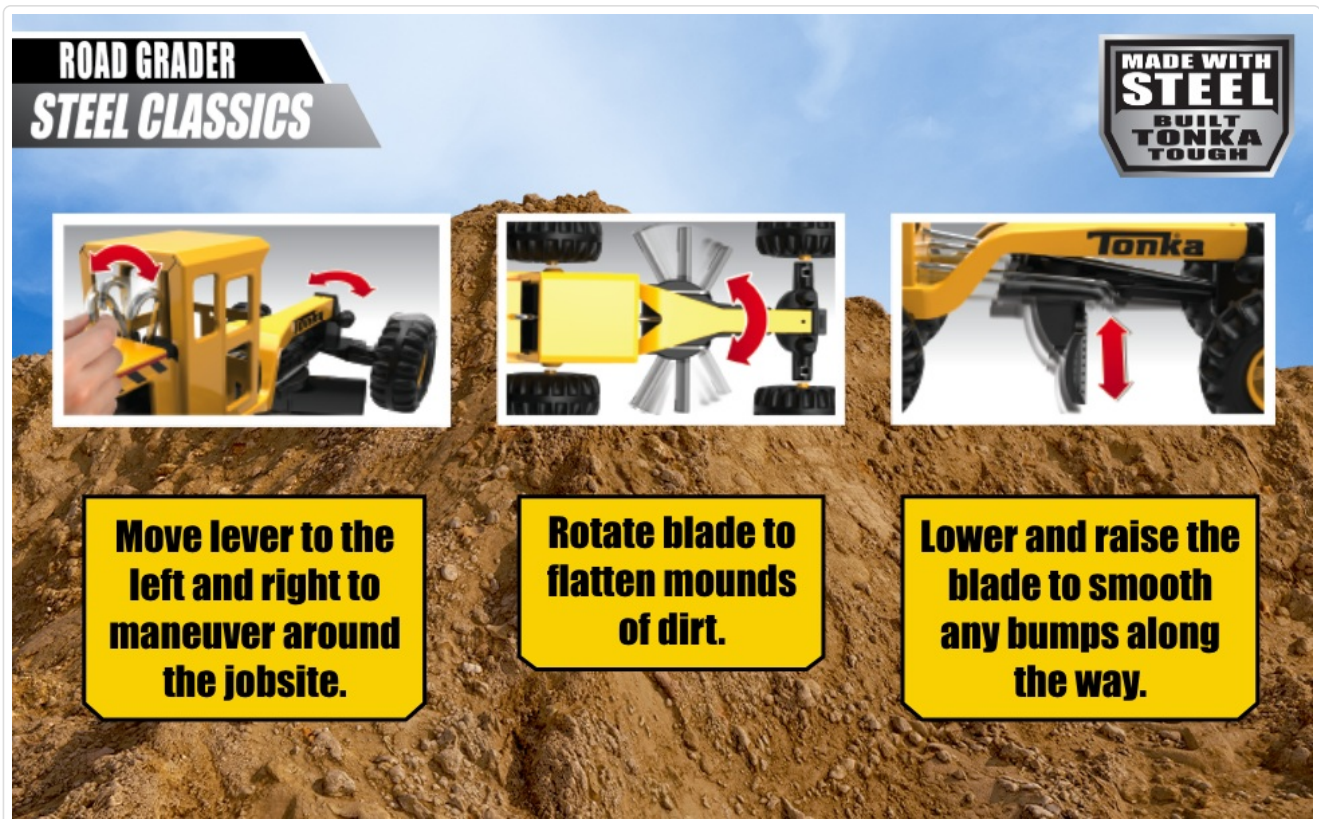


Image: The Tonka Steel Classics Road Grader on a dirt pile, highlighting its steel construction for durability.

2. SETUP

2.1 Unboxing

The Tonka Steel Classics Road Grader comes fully assembled. Carefully remove the toy from its packaging, ensuring no small parts are left behind.

2.2 Initial Inspection

Inspect the road grader for any signs of damage. Ensure all wheels rotate freely and the grading blade mechanism operates smoothly. No assembly is required.

3. OPERATING INSTRUCTIONS

The Tonka Steel Classics Road Grader is designed for imaginative play, both indoors and outdoors. Its durable steel and sturdy plastic construction ensures it can withstand rigorous play.

3.1 Movable Grading Blade

The road grader features a positionable grading blade. Use the lever axle to adjust the blade's height and angle to flatten surfaces or move materials like dirt and gravel. The blade can be lowered, raised, and rotated for various grading tasks.

3.2 Steering and Maneuvering

The front wheels can be steered by manipulating the front axle, allowing for precise maneuvering around the play area. Move the lever in the cab to the left and right to guide the road grader.



Image: Visual instructions demonstrating how to move the lever for steering, rotate the blade to flatten dirt, and lower/raise the blade to smooth surfaces.



Image: A child's hands interacting with the adjustable grading blade of the Tonka Road Grader on a surface of small rocks and dirt.

4. MAINTENANCE

4.1 Cleaning

To clean your Tonka Steel Classics Road Grader, wipe it with a damp cloth. For outdoor play, rinse off dirt and debris with water. Avoid harsh chemicals to preserve the finish and material integrity.

4.2 Storage

Store the toy in a dry place away from extreme temperatures to prolong its lifespan.

5. TROUBLESHOOTING

5.1 Wheels Not Turning Smoothly

If the wheels do not turn smoothly, check for any obstructions such as dirt, sand, or small objects caught in the axles. Clean the area thoroughly.

5.2 Grading Blade Stiff or Stuck

If the grading blade mechanism feels stiff or gets stuck, ensure no debris is caught in the moving parts. Gently clear any obstructions. The robust design minimizes common issues.

6. SPECIFICATIONS

- **Product Dimensions:** 8 x 18 x 7.5 inches
- **Item Weight:** 2.2 pounds
- **ASIN:** B08VCGNG1R
- **Item Model Number:** 06129
- **Manufacturer Recommended Age:** 36 months - 15 years
- **Material:** Cold-rolled steel and sturdy plastic
- **What's in the Box:** 1 toy vehicle



Image: A diagram illustrating the length (18 inches), width (8 inches), and height (7.5 inches) of the Tonka Steel Classics Road Grader.

7. WARRANTY AND SUPPORT

For warranty information or customer support regarding your Tonka Steel Classics Road Grader, please refer to the manufacturer's official website or contact their customer service department. Keep your purchase receipt as proof of purchase.

Manufacturer: Basic Fun

Visit the [Tonka Store](#) for more products and information.