



Manuals.plus /

- › Dell /
- › Dell S2422HG 24-inch FHD Curved Gaming Monitor Instruction Manual

## Dell S2422HG

# Dell S2422HG 24-inch FHD Curved Gaming Monitor Instruction Manual

Model: S2422HG

Brand: Dell

## 1. INTRODUCTION

---

This manual provides essential information for the proper setup, operation, maintenance, and troubleshooting of your Dell S2422HG 24-inch FHD Curved Gaming Monitor. Please read this manual thoroughly before using the monitor to ensure optimal performance and safety.

The Dell S2422HG is a 24-inch (60.96 cm) Full HD (1920 x 1080) curved gaming monitor featuring a 1500R curvature, a 165 Hz refresh rate, and a 1ms MPRT (Moving Picture Response Time) for a responsive gaming experience. It also includes AMD FreeSync Premium technology to reduce screen tearing and stuttering.

## 2. SAFETY INFORMATION

---

Observe the following safety precautions to prevent damage to the monitor and ensure personal safety:

- Place the monitor on a stable, flat surface to prevent it from falling.
- Ensure adequate ventilation around the monitor. Do not block ventilation openings.
- Use only the power cord and adapter supplied with the monitor.
- Do not expose the monitor to rain or moisture to avoid fire or electric shock hazards.
- Avoid placing heavy objects on the power cord.
- Disconnect the power cable from the wall outlet before cleaning the monitor.

### 3. PACKAGE CONTENTS

---

Verify that all components are present in the package:

- Dell S2422HG Monitor
- Monitor Stand (Base and Riser)
- Power Cable
- DisplayPort to DisplayPort Cable

### 4. SETUP

---

#### 4.1 Assembling the Monitor Stand

1. Carefully remove the monitor from its packaging.
2. Attach the stand riser to the monitor panel until it clicks into place.
3. Attach the stand base to the riser and tighten the captive screw.



Image: Side view of the Dell S2422HG monitor, illustrating the assembled stand and monitor panel.

## 4.2 Connecting the Monitor

1. Connect the power cable to the monitor's power port and then to a wall outlet.
2. Connect one end of the DisplayPort cable to the DisplayPort input on the monitor and the other end to the DisplayPort output on your computer. Alternatively, use an HDMI cable if your computer supports it.



Image: Rear view of the Dell S2422HG monitor, highlighting the power input, DisplayPort, and HDMI connections.

## 5. OPERATING INSTRUCTIONS

---

### 5.1 Powering On/Off

Press the power button, typically located on the bottom right or rear of the monitor, to turn the monitor on or off. The power LED will indicate the monitor's status.

### 5.2 On-Screen Display (OSD) Menu Navigation

The monitor features a joystick control, usually located on the rear, for navigating the On-Screen Display (OSD) menu. Push the joystick in to activate the OSD, then move it up, down, left, or right to browse menu options and adjust settings.



Image: Front view of the Dell S2422HG monitor, showcasing its curved display and narrow bezels while displaying a gaming scene.

### 5.3 Adjusting Settings

Through the OSD menu, you can adjust various display settings:

- **Brightness/Contrast:** Adjust the overall luminance and difference between light and dark areas.
- **Input Source:** Manually select between DisplayPort or HDMI inputs.
- **Color Settings:** Modify color temperature, gamma, and color modes (e.g., Standard, Game, Warm, Cool).
- **Response Time:** Optimize pixel response for faster transitions, with options like 1ms MPRT.
- **Refresh Rate:** Ensure your system is configured to output 165 Hz for the smoothest experience.
- **AMD FreeSync Premium:** Enable this feature in the OSD and your graphics card settings to synchronize the monitor's refresh rate with your GPU's frame rate, reducing screen tearing and stuttering.

## 6. MAINTENANCE

### 6.1 Cleaning the Monitor

- Always unplug the monitor from the electrical outlet before cleaning.
- Use a soft, lint-free cloth lightly dampened with water or a non-abrasive screen cleaner.

- Do not use benzene, thinner, ammonia-based cleaners, or abrasive detergents, as these can damage the monitor's finish.
- Wipe the screen gently to avoid scratching.

## 6.2 General Care

- Avoid placing the monitor in direct sunlight or near heat sources.
- Do not block the ventilation slots on the monitor.
- Handle the monitor with care to prevent physical damage.

## 7. TROUBLESHOOTING

---

If you encounter issues with your monitor, refer to the following common troubleshooting steps:

- **No Power:** Ensure the power cable is securely connected to both the monitor and a working electrical outlet. Check if the power adapter LED (if applicable) is lit.
- **No Signal:** Verify that the video cable (DisplayPort or HDMI) is firmly connected to both the monitor and your computer. Ensure the correct input source is selected in the monitor's OSD menu.
- **Display Issues (e.g., blurry image, incorrect colors):** Adjust the resolution and refresh rate settings on your computer to match the monitor's native resolution (1920 x 1080) and desired refresh rate (up to 165 Hz). Reset OSD settings to factory defaults if necessary.
- **Screen Flickering/Tearing:** Ensure AMD FreeSync Premium is enabled in both the monitor's OSD and your graphics card control panel. Update your graphics card drivers.
- **Dead Pixels:** Refer to Dell's pixel policy for information regarding acceptable pixel anomalies.

For further assistance, consult the Dell support website or contact customer service.

## 8. SPECIFICATIONS

---

Key technical specifications for the Dell S2422HG monitor:

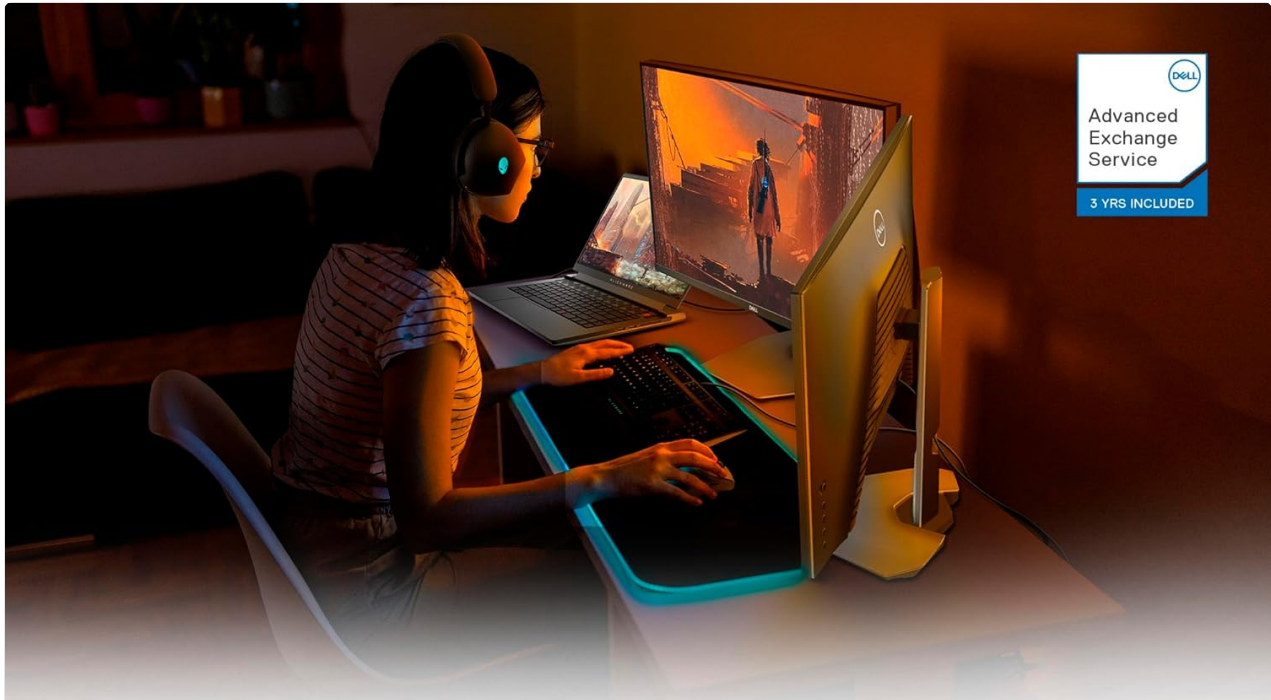
Feature	Specification
Screen Size	23.6 Inches (60.96 cm)
Panel Type	VA
Curvature	1500R
Native Resolution	1920 x 1080 (FHD)
Refresh Rate	165 Hz
Response Time	1 ms (MPRT), 4 ms (grey-to-grey super fast)
Brightness	350 cd/m <sup>2</sup>
Contrast Ratio	3000:1 (Typical)
Color Support	16.7 Million Colors
Aspect Ratio	16:9
Connectivity	1x DisplayPort, 1x HDMI
Display Position Adjustments	Height (3.9 in), Tilt (-5°/+21°)
Product Dimensions (with stand)	21.11 x 35.84 x 23.55 cm (D x W x H)
Item Weight	5.15 kg



Image: Diagram illustrating the physical dimensions of the Dell S2422HG monitor with its stand.

## 9. WARRANTY AND SUPPORT

Your Dell S2422HG monitor comes with a **3-year Advanced Exchange Service**. This service ensures that if your warranty issue cannot be resolved remotely, Dell will send a replacement monitor the next business day. Please note that a fee may be charged for failure to return defective units. Availability and terms vary by region.



## **ENJOY PEACE OF MIND WITH DELL SERVICES.**

### **3-year Advanced Exchange Service**

If your warranty issue can't be resolved remotely, Dell will send a replacement monitor the next business day.<sup>1</sup>

1. Fee charged for failure to return defective units. Availability and terms vary by region.  
See [Dell.com/Servicecontracts](https://www.dell.com/servicecontracts).

Image: Information regarding Dell's 3-year Advanced Exchange Service, highlighting warranty support.

For detailed warranty terms, technical support, or service requests, please visit the official Dell support website or contact your local Dell customer service representative.

You can find more information and support resources at [www.dell.com/support](https://www.dell.com/support).