

DROK f55fd3b6-653f-4039-89b8-9bb4e9f3c2ff

DROK DC Battery Monitor 0-300V 200A User Manual

Model: f55fd3b6-653f-4039-89b8-9bb4e9f3c2ff

1. INTRODUCTION

This user manual provides detailed instructions for the DROK DC Battery Monitor, a versatile multimeter designed to measure various electrical parameters. It is equipped with a Hall sensor for isolated measurement and features a full-view STN LCD display for clear readability in diverse lighting conditions. This device is ideal for monitoring battery capacity, voltage, current, power, and accumulated energy in DC systems.

2. KEY FEATURES

- **Multifunctional Measurement:** Measures percentage and AH of remaining capacity, DC positive and negative bidirectional current, DC voltage, DC positive and negative power, and DC positive and negative bidirectional accumulated electric energy.
- **Wide Measurement Range:** Voltage measurement range is DC 0-300V, current measurement range is 0-200A.
- **Hall Sensor for Isolated Measurement:** Comes with a Hall transformer for reliable and safe isolated measurements.
- **Easy Wiring:** Supports two-wire and three-wire system connections, powered by DC 5-90V.
- **Full-view STN LCD Display:** Backlight control and clear visibility day or night, indoors or outdoors.
- **Alarming Function:** Flashes and alarms for high/low voltage, high current, and low battery capacity.
- **Shielded Wire Options:** Available with 0.5m or 2.5m shielded wire for flexible installation.

3. PACKAGE CONTENTS

Please check the package contents upon receipt to ensure all components are present:

- DROK DC Battery Monitor Display Unit
- Hall Current Sensor (Transformer)
- Shielded Wire (0.5m or 2.5m, depending on model)
- Connection Cables



Figure 3.1: Overview of the DROK DC Battery Monitor and its components, showing two units with their respective Hall sensors and shielded wires.

4. SETUP AND INSTALLATION

4.1 Component Identification

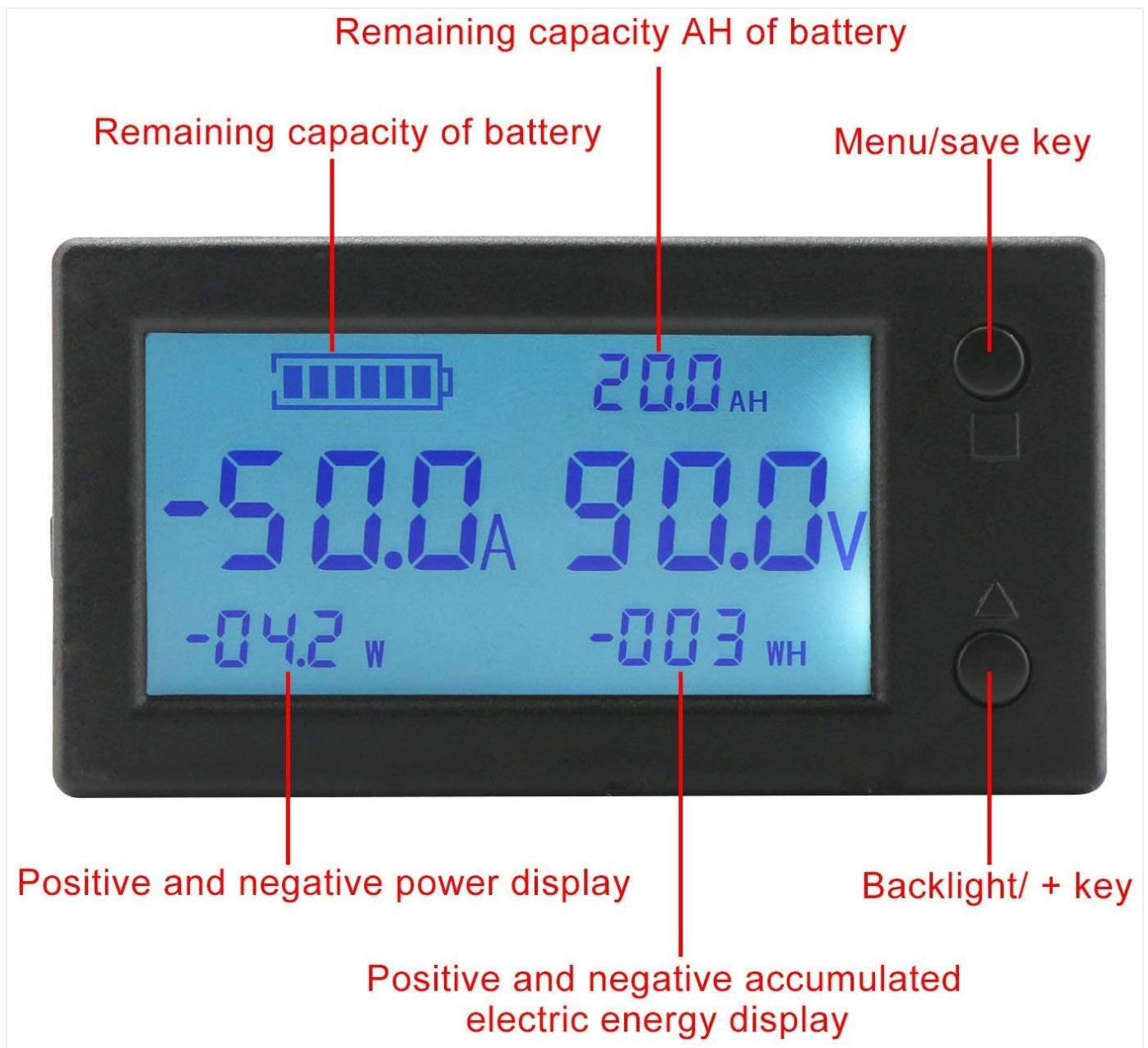


Figure 4.1: Front panel display and button identification. Labels include "Remaining capacity AH of battery", "Remaining capacity of battery", "Menu/save key", "Positive and negative power display", "Backlight/+ key", and "Positive and negative accumulated electric energy display".

4.2 Wiring Diagrams

The monitor supports both two-wire and three-wire system connections. Ensure correct polarity and connection of the Hall sensor.

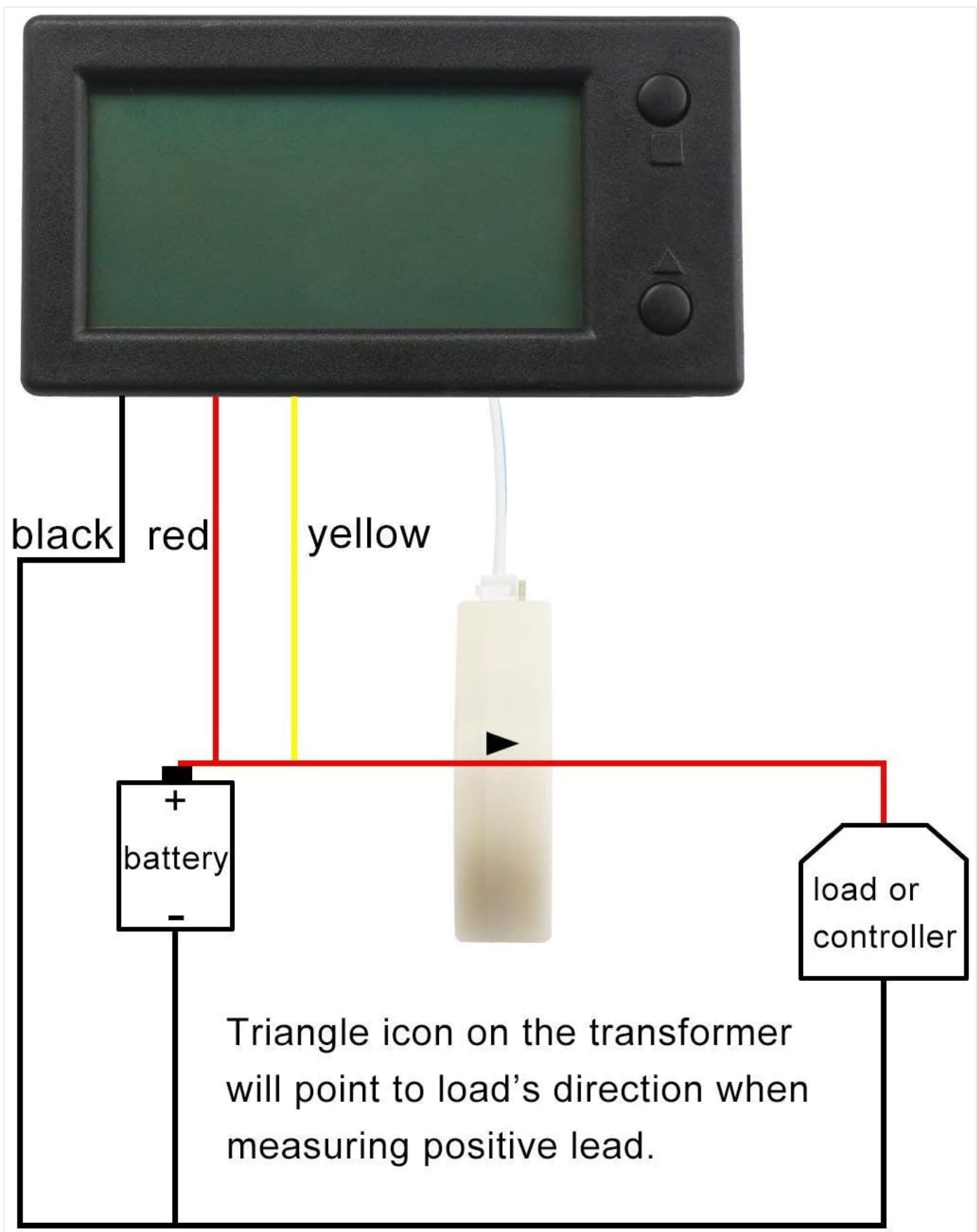


Figure 4.2: Standard wiring diagram. The triangle icon on the transformer should point to the load's direction when measuring the positive lead.

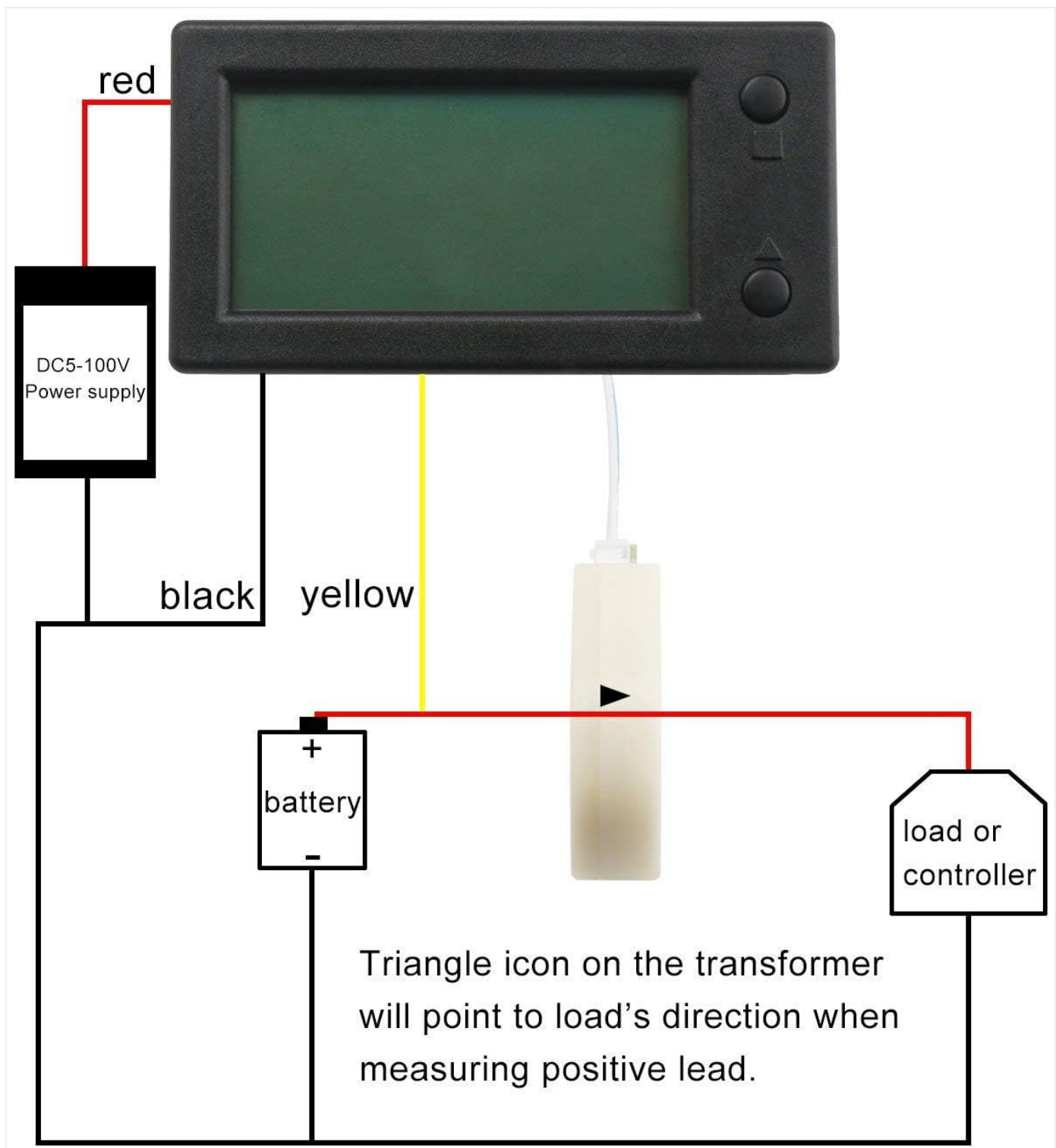


Figure 4.3: Wiring diagram with an external DC 5-100V power supply. This configuration is used when the monitor's power supply is separate from the measured circuit.

Important Note: The triangle icon on the Hall transformer indicates the direction for measuring the positive lead. Ensure it points towards the load or controller for accurate readings.

5. OPERATING INSTRUCTIONS

5.1 Display Overview

The full-view STN LCD display shows various parameters simultaneously:

- **Battery Icon:** Indicates remaining capacity percentage.
- **AH:** Remaining capacity in Ampere-hours.

- **A:** Current (positive or negative, indicating charge/discharge).
- **V:** Voltage.
- **W:** Power (positive or negative).
- **WH:** Accumulated electric energy (positive or negative).

5.2 Button Functions

- **Menu/Save Key (Top Right):** Used to enter menu settings and save changes.
- **Backlight/+ Key (Bottom Right):** Toggles backlight ON/OFF and navigates menu options.

5.3 Alarming Function

The monitor features an alarming function to alert users to critical conditions:

- **Voltage Alarm:** The display will flash if the real voltage is higher or lower than the preset alarming voltage.
- **Current Alarm:** The display will flash if the real current exceeds the preset current limit.
- **Low Capacity Alarm:** The display will flash to remind you to charge your device when the remaining battery capacity is low.

Refer to the detailed settings section (not provided in this manual) for instructions on how to set alarm thresholds.

6. MAINTENANCE

To ensure the longevity and accurate operation of your DROK DC Battery Monitor, follow these maintenance guidelines:

- **Cleaning:** Use a soft, dry cloth to clean the display and casing. Do not use abrasive cleaners or solvents.
- **Environment:** Operate and store the device in a dry environment, away from direct sunlight, extreme temperatures, and high humidity.
- **Connections:** Periodically check all wiring connections to ensure they are secure and free from corrosion.
- **Avoid Impact:** Protect the device from physical shocks and drops.

7. TROUBLESHOOTING

If you encounter issues with your DROK DC Battery Monitor, refer to the following common problems and solutions:

Problem	Possible Cause	Solution
Display is blank	No power supply; incorrect wiring.	Check power connections (DC 5-90V). Verify wiring according to diagrams in Section 4.2.
Inaccurate readings	Incorrect Hall sensor orientation; faulty wiring; sensor not properly installed.	Ensure the triangle icon on the Hall sensor points in the correct direction. Recheck all wiring. Ensure the current-carrying wire passes cleanly through the sensor's aperture.
Alarm constantly active	Parameters outside preset thresholds; incorrect alarm settings.	Check actual voltage/current/capacity against alarm settings. Adjust alarm thresholds if necessary (refer to advanced settings, if applicable).
Buttons unresponsive	Temporary software glitch; physical damage.	Disconnect power for a few seconds and reconnect. If problem persists, contact customer support.

8. SPECIFICATIONS

Parameter	Value
Brand	DROK
Model Number	f55fd3b6-653f-4039-89b8-9bb4e9f3c2ff
Voltage Measurement Range	DC 0-300V
Current Measurement Range	0-200A
Power Source	Battery Powered, Electric (DC 5-90V for meter)
Display Type	Full-view STN LCD
Measurement Type	Multimeter
Color	Black
First Available Date	January 25, 2021

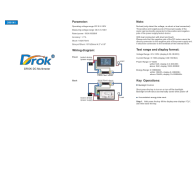
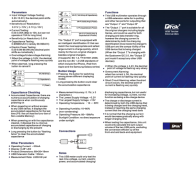
9. WARRANTY AND SUPPORT





DROK products are designed for reliability and performance. For warranty information and technical support, please refer to the following:

- **Warranty:** This product typically comes with a standard manufacturer's warranty. Please retain your proof of purchase for warranty claims. Specific warranty terms may vary by region and retailer.
- **Customer Support:** For technical assistance, troubleshooting, or inquiries regarding your DROK DC Battery Monitor, please visit the official DROK store on Amazon or contact their customer service directly.
- **Online Resources:** Additional resources, FAQs, and updated information may be available on the manufacturer's website or product page.

Note: The return policy for this product is 30 days for refund/replacement, as per Amazon's policy at the time of purchase. This does not affect your manufacturer's warranty rights.

Related Documents - f55fd3b6-653f-4039-89b8-9bb4e9f3c2ff

	<p>DROK DC Multimeter 6.5-100V 100A User Manual</p> <p>This document provides instructions and specifications for the DROK DC Multimeter, model PZEM-051. Learn about its parameters, wiring diagrams, test ranges, display formats, and key operations including backlight control and data reset.</p>
	<p>DROK USB Tester Instruction Manual: Voltage, Current, Capacitance Measurement</p> <p>Comprehensive instruction manual for the DROK USB Tester, detailing its parameters, functions, capacitance checking, and measurement capabilities for voltage, current, and power.</p>

	<p>DROK WLS-PVA200 LCD Hall Current Voltage Power Electric Energy Meter Instructions</p> <p>This document provides instructions for the DROK WLS-PVA200 LCD Hall Current Voltage Power Electric Energy Meter. It covers function introduction, button operations, technical parameters, and wiring instructions for measuring battery capacity, current, voltage, power, and accumulated electric energy.</p>
	<p>UM25 USB Color Screen Tester Instructions and Specifications</p> <p>Comprehensive instructions and technical specifications for the UM25 USB Color Screen Tester, detailing its parameters, functions, interface descriptions, and operation steps for accurate USB testing.</p>
	<p>DROK LCD Hall Cullen Meter Instructions: Current, Voltage, Power, and Energy Measurement</p> <p>Comprehensive guide to the DROK LCD Hall Cullen Meter (SKU: 2001712003) for measuring DC current, voltage, power, and accumulated electric energy. Learn about its functions, button operations, technical parameters, and wiring instructions.</p>
	<p>Majestic MONTANA-36H Owner's Manual and Service Parts</p> <p>Owner's Manual and Service Parts list for the Majestic MONTANA-36H 36" Outdoor Woodburning Fireplace by Hearth & Home Technologies. Includes part numbers and descriptions for replacement components.</p>