

Phomemo M03

Phomemo M03 Portable Photo Printer User Manual

Model: M03 | Brand: Phomemo

1. INTRODUCTION

Thank you for choosing the Phomemo M03 Portable Photo Printer. This compact and versatile thermal printer allows you to print photos, labels, notes, and more directly from your mobile device. Designed for convenience and portability, the M03 supports two print sizes, 53mm (2 inches) and 80mm (3 inches), providing clear black and white prints without the need for ink cartridges. This manual provides detailed instructions on setting up, operating, and maintaining your Phomemo M03 printer to ensure optimal performance and longevity.



Figure 1.1: Phomemo M03 Portable Photo Printer in use, demonstrating its wireless printing capabilities and diverse output.

2. PACKAGE CONTENTS

Please check the box for the following items:

- Phomemo M03 Sticker Printer
- One (1) Roll of White Thermal Paper
- Type-C Charging Cable
- User Manual (this document)

3. PRODUCT FEATURES

3.1 Dual Print Sizes (53mm & 80mm)

The M03 printer supports both 53mm (2-inch) and 80mm (3-inch) print widths, offering greater flexibility for various printing needs compared to smaller thermal printers. This allows for clearer and more detailed prints.

Wider Print in 2 Sizes



Figure 3.1: Illustration of the M03's capability to print in two different widths: 53mm and 80mm.

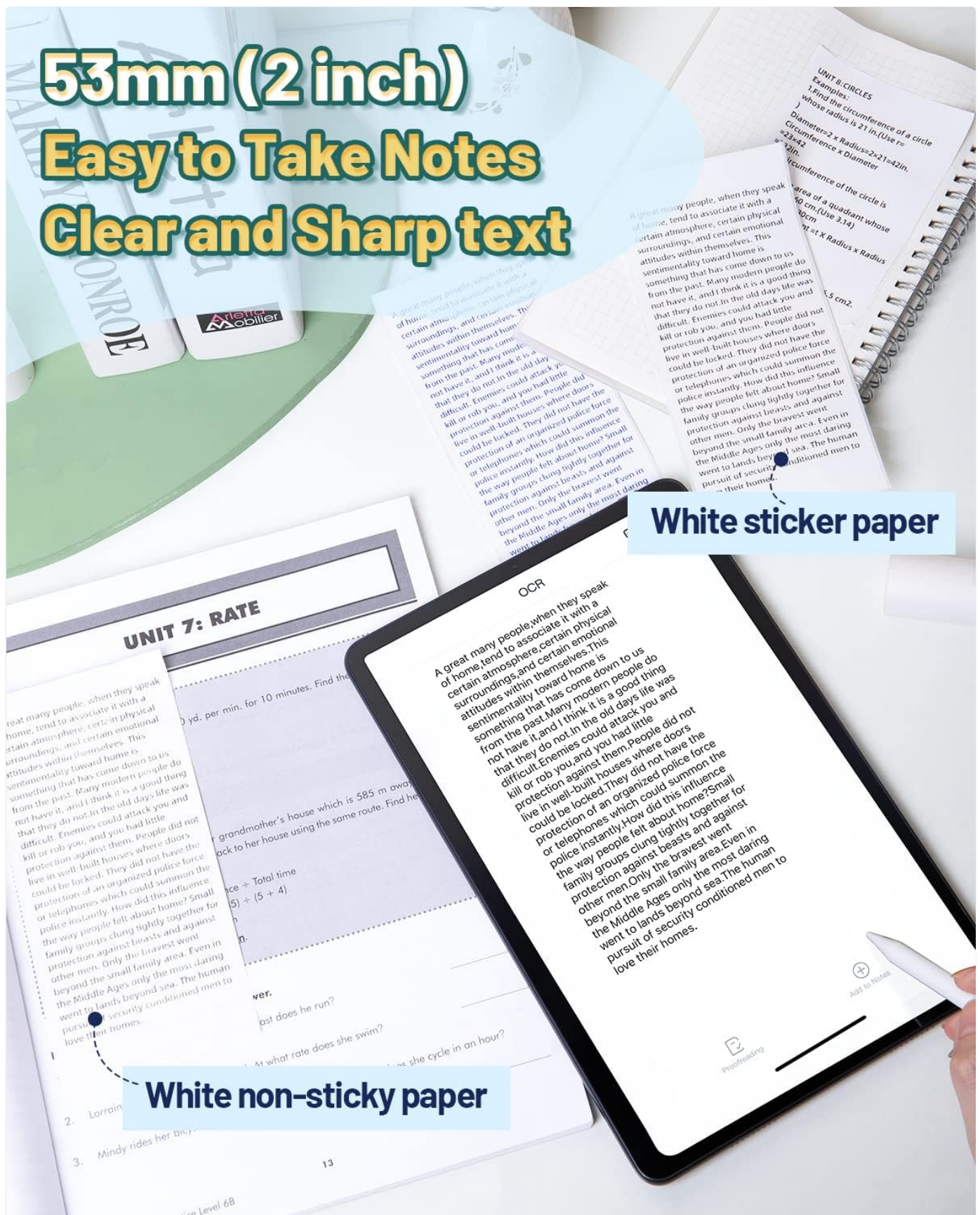


Figure 3.2: Example of 53mm printout, ideal for clear and sharp text notes.

80mm (3 inch) Satisfy More Your DIY Journal Creation



Figure 3.3: Example of 80mm printout, suitable for DIY journal creations and larger designs.

3.2 Versatile Applications

The M03 portable printer is suitable for a wide range of uses, including printing photos, creating albums, personalized stickers, labels, notes, and work plans. Please note that the printer exclusively produces black and white prints.

3.3 Bluetooth Connectivity

Connect your mobile phone or tablet wirelessly to the M03 printer via Bluetooth. The printer is compatible with Android 7.0 or iOS 13.0 and higher versions.

Sticker Printer with Smart APP "Phomemo"





Phomemo

13:58

4G 60%

M03

Connected

TAROT

Create your own Tarot card with creativity!

Try now

Print Images

Notes

AI Art Generator

AI Background Remover

Templates

Scan & Print

Print Websites

Micro Print

Print Documents

Widgets

Card Paper

Home

Graphic

Mall

Profile

New AI Feature

AI Art Generator

Get creative!

11:41

cute dog in the grass



Try again

Scan Enhancement





A - Left atrium B - left ventricle
C - Right atrium D - right ventricle
a-Aorta b-pulmonary artery
c-pulmonary veins d - superior vena cava

TO DO LIST

- 10:00 Q3 quarterly summary meeting
- 15:00 Submit summary report to manager
- 17:00 Pick up Mr. Brown at the airport

Happy every day



Download from

Download on the App Store

GET IT ON Google Play

Figure 3.4: The Phomemo Smart App interface, showing features like AI Art Generator, Notes, and Templates.

Bluetooth Connection - Instant Printing



Figure 3.5: Demonstrating the seamless Bluetooth connection for instant printing.

3.4 Inkless Thermal Printing

The Phomemo M03 utilizes thermal printing technology, eliminating the need for ink cartridges, toner, or ribbons. This design ensures hassle-free printing and allows for convenient use even outdoors when the printer is fully charged.

3.5 Long-lasting Battery

Figure 3.6: The M03 printer used for early education activities, such as printing learning cards.

4. SETUP GUIDE

4.1 Charging the Printer

Before first use, fully charge the printer. Connect the provided Type-C charging cable to the printer's charging port and the other end to a USB power adapter (not included) or a computer USB port. The indicator light will show charging status.

4.2 Loading Thermal Paper

1. Open the printer cover by gently sliding the latch or pressing the release button (refer to the diagram on the device if available).
2. Insert the thermal paper roll into the paper compartment, ensuring the printing side of the paper faces the print head. The paper should feed smoothly.
3. Pull a small length of paper out of the printer and close the cover firmly until it clicks into place.

4.3 Installing the Phomemo App

The Phomemo M03 printer operates via the Phomemo mobile application. Download the app from your device's app store:

- For iOS devices: Search for "Phomemo" in the Apple App Store.
- For Android devices: Search for "Phomemo" in the Google Play Store.

Install the app and grant necessary permissions for Bluetooth and storage access.

4.4 Pairing with Your Device (Bluetooth)

1. Ensure the Phomemo M03 printer is turned on.
2. Enable Bluetooth on your mobile phone or tablet.
3. Open the Phomemo app. The app will automatically search for nearby Phomemo devices.
4. Select "M03" from the list of available devices to connect. Once connected, the app will indicate the printer's status.

5. OPERATING INSTRUCTIONS

5.1 Basic Printing

1. Ensure the printer is connected to the Phomemo app via Bluetooth.
2. Within the Phomemo app, select the desired printing function (e.g., "Print Images," "Notes," "Templates").
3. Choose the content you wish to print from your device's gallery, create new notes, or select a template.
4. Adjust print settings such as size (if applicable for 53mm/80mm paper), density, or rotation within the app's editing interface.
5. Tap the "Print" button to initiate printing. The printer will feed and print the content.

5.2 Using App Features

The Phomemo app offers a variety of features to enhance your printing experience:

- **Print Images:** Select and print photos from your phone's gallery.
- **Notes:** Create and print text notes, lists, or memos.
- **Templates:** Access a library of pre-designed templates for labels, planners, to-do lists, and more.
- **Scan & Print:** Use your phone's camera to scan text or images and print them.
- **Print Websites:** Print content directly from web pages.
- **Micro Print:** For very small text or detailed prints.
- **Print Documents:** Print various document types.

- **Widgets:** Utilize app widgets for quick access to printing functions.
- **Card Paper:** Specific settings for printing on card-like thermal paper.
- **AI Art Generator:** Generate unique images using AI for printing.

6. MAINTENANCE

6.1 Cleaning the Print Head

To maintain print quality, clean the print head regularly, especially if print quality degrades or streaks appear.

1. Turn off the printer and disconnect the charging cable.
2. Open the printer cover.
3. Gently wipe the print head (the dark strip inside the printer) with a cotton swab lightly dampened with isopropyl alcohol.
4. Allow the print head to dry completely before closing the cover and turning on the printer.

6.2 Battery Care

- Avoid fully discharging the battery frequently.
- Charge the printer regularly, even if not in use, to maintain battery health.
- Store the printer in a cool, dry place when not in use for extended periods.

6.3 Storage

Store the printer in a clean, dry environment away from direct sunlight, extreme temperatures, and humidity. Keep it away from dust and corrosive chemicals.

7. TROUBLESHOOTING

Problem	Possible Cause	Solution
Printer does not turn on.	Low battery; Power button not pressed correctly.	Charge the printer; Press and hold the power button for a few seconds.
Cannot connect via Bluetooth.	Bluetooth off on device; Printer not in pairing mode; App issue.	Ensure Bluetooth is on; Restart printer and app; Check app permissions.
Poor print quality (faint, streaks).	Low battery; Dirty print head; Incorrect paper type; Paper loaded incorrectly.	Charge printer; Clean print head (Section 6.1); Use Phomemo thermal paper; Reload paper correctly.
Paper jam.	Paper loaded incorrectly; Foreign object inside.	Turn off printer, open cover, carefully remove jammed paper; Check for obstructions.
Printer stops printing mid-way.	Out of paper; Low battery; Bluetooth connection lost.	Replace paper roll; Charge printer; Re-establish Bluetooth connection.

8. SPECIFICATIONS

Feature	Specification
Model Number	M03

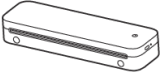
Feature	Specification
Dimensions (L x W x H)	14.5 x 6.7 x 5.4 cm (approx. 5.7 x 2.6 x 2.1 inches)
Weight	650 Grams (approx. 1.43 lbs)
Printing Technology	Thermal
Print Resolution	203 dpi (dots per inch)
Print Output	Monochrome (Black and White)
Max Media Size	80 mm (3 inches)
Connectivity	Bluetooth, USB (Type-C for charging)
Compatible Devices	Smartphones, Tablets
Operating System Compatibility	Android 7.0 or higher, iOS 13.0 or higher
Battery	2200 mAh Lithium-polymer (built-in)
Max Print Speed (Monochrome)	10 mm/s

9. WARRANTY AND SUPPORT

Phomemo products are manufactured to high-quality standards. For information regarding warranty coverage, returns, or technical support, please refer to the warranty card included in your product packaging or visit the official Phomemo website. You can also visit the Phomemo store on Amazon for further assistance and product information: [Phomemo Amazon Store](#). Please retain your proof of purchase for any warranty claims.

© 2024 Phomemo. All rights reserved.

Related Documents



M834 Portable Printer
User Guide

Referencing the product, please consult the manual carefully.

English

01. Package Contents

Printer x1, Power Adapter x1, USB Type-C Cable x1, Quick Start Guide x1

02. Printer Components

Power Button, Power Indicator, Quick Release, USB Type-C Port

03. Troubleshooting

Quick Start Guide

M08F

Phomemo A4
Portable Printer



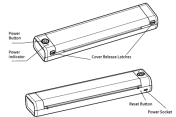
Before using, please read the manual carefully and
keep it handy for future reference.

English

01. Package Contents



02. Printer Components



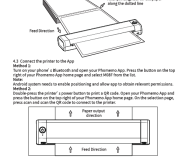
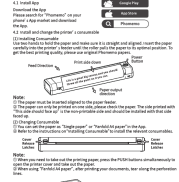
Name	State
Power button	On/Off
Front button	On/Off
Back button	On/Off
Top button	On/Off

Model Name	Operation
Power button	Press and hold the button for about 3 seconds until the printer starts printing.
Front button	Press and hold the button for about 3 seconds until the printer starts printing.
Back button	Press and hold the button for about 3 seconds until the printer starts printing.
Top button	Press and hold the button for about 3 seconds until the printer starts printing.

03. Precautions

1. Please read the Quick Start Guide for details, and it is recommended to use mobile phone power (USB to USB-C) to power the printer. Please read the manual carefully and keep it handy for future reference.
2. Please do not use the printer in the following situations:
a. In the presence of flammable or explosive materials.
b. In the presence of high voltage or high frequency electromagnetic waves.
c. In the presence of strong magnetic fields.
d. In the presence of strong static electricity.
e. In the presence of strong vibration.
f. In the presence of strong wind.
g. In the presence of strong rain.
h. In the presence of strong snow.
i. In the presence of strong fog.
j. In the presence of strong dust.
k. In the presence of strong smoke.
l. In the presence of strong steam.
m. In the presence of strong heat.
n. In the presence of strong cold.
o. In the presence of strong humidity.
p. In the presence of strong dryness.
q. In the presence of strong light.
r. In the presence of strong darkness.
s. In the presence of strong sound.
t. In the presence of strong silence.
u. In the presence of strong color.
v. In the presence of strong black and white.
w. In the presence of strong red and green.
x. In the presence of strong blue and yellow.
y. In the presence of strong purple and pink.
z. In the presence of strong brown and grey.

04. Installation Guide



05. How to Download and Install Driver



06. Official Printing Paper Type

1. Please use the official printing paper for the printer. The printer can print on A4, A5, B5, and 11x17 inch paper. The printer can also print on 10x15 cm, 10x20 cm, 15x20 cm, 20x30 cm, 30x40 cm, 40x60 cm, 60x90 cm, 90x120 cm, 120x180 cm, 180x240 cm, 240x360 cm, 360x480 cm, 480x640 cm, 640x960 cm, 960x1280 cm, 1280x1920 cm, 1920x2560 cm, 2560x3200 cm, 3200x4096 cm, 4096x5120 cm, 5120x6144 cm, 6144x7680 cm, 7680x9216 cm, 9216x11264 cm, 11264x13824 cm, 13824x17184 cm, 17184x21056 cm, 21056x25856 cm, 25856x31744 cm, 31744x39680 cm, 39680x49600 cm, 49600x61440 cm, 61440x76800 cm, 76800x96000 cm, 96000x120000 cm, 120000x150000 cm, 150000x187500 cm, 187500x234375 cm, 234375x292969 cm, 292969x366211 cm, 366211x457764 cm, 457764x572205 cm, 572205x715256 cm, 715256x894070 cm, 894070x1117588 cm, 1117588x1396985 cm, 1396985x1746231 cm, 1746231x2182789 cm, 2182789x2728486 cm, 2728486x3410607 cm, 3410607x4263259 cm, 4263259x5329074 cm, 5329074x6661343 cm, 6661343x8326679 cm, 8326679x10408349 cm, 10408349x12985436 cm, 12985436x16176795 cm, 16176795x20220994 cm, 20220994x25276243 cm, 25276243x31595304 cm, 31595304x39494130 cm, 39494130x49367663 cm, 49367663x61209579 cm, 61209579x76511974 cm, 76511974x95639968 cm, 95639968x119549960 cm, 119549960x149437451 cm, 149437451x186796814 cm, 186796814x233496018 cm, 233496018x291870023 cm, 291870023x363587529 cm, 363587529x450484412 cm, 450484412x563105515 cm, 563105515x701381894 cm, 701381894x876727368 cm, 876727368x1095909210 cm, 1095909210x1369886513 cm, 1369886513x1709868141 cm, 1709868141x2127954177 cm, 2127954177x2635142722 cm, 2635142722x3323678403 cm, 3323678403x4148348004 cm, 4148348004x5142435005 cm, 5142435005x6340143757 cm, 6340143757x7875554622 cm, 7875554622x9783680778 cm, 9783680778x12110548981 cm, 12110548981x14908936226 cm, 14908936226x18330920283 cm, 18330920283x22430500354 cm, 22430500354x27352676689 cm, 27352676689x34041345861 cm, 34041345861x42481632327 cm, 42481632327x52481632327 cm, 52481632327x64961632327 cm, 64961632327x79961632327 cm, 79961632327x97961632327 cm, 97961632327x119961632327 cm, 119961632327x147961632327 cm, 147961632327x181961632327 cm, 181961632327x223961632327 cm, 223961632327x273961632327 cm, 273961632327x331961632327 cm, 331961632327x399961632327 cm, 399961632327x479961632327 cm, 479961632327x579961632327 cm, 579961632327x699961632327 cm, 699961632327x839961632327 cm, 839961632327x999961632327 cm, 999961632327x1199961632327 cm, 1199961632327x1439961632327 cm, 1439961632327x1719961632327 cm, 1719961632327x2039961632327 cm, 2039961632327x2409961632327 cm, 2409961632327x2829961632327 cm, 2829961632327x3309961632327 cm, 3309961632327x3849961632327 cm, 3849961632327x4459961632327 cm, 4459961632327x5149961632327 cm, 5149961632327x5929961632327 cm, 5929961632327x6799961632327 cm, 6799961632327x7769961632327 cm, 7769961632327x8849961632327 cm, 8849961632327x10049961632327 cm, 10049961632327x11379961632327 cm, 11379961632327x12849961632327 cm, 12849961632327x14459961632327 cm, 14459961632327x16219961632327 cm, 16219961632327x18139961632327 cm, 18139961632327x20229961632327 cm, 20229961632327x2249961632327 cm, 2249961632327x24949961632327 cm, 24949961632327x2759961632327 cm, 2759961632327x30449961632327 cm, 30449961632327x3349961632327 cm, 3349961632327x36749961632327 cm, 36749961632327x4029961632327 cm, 4029961632327x4409961632327 cm, 4409961632327x48149961632327 cm, 48149961632327x52449961632327 cm, 52449961632327x5699961632327 cm, 5699961632327x6179961632327 cm, 6179961632327x66849961632327 cm, 66849961632327x7219961632327 cm, 7219961632327x77749961632327 cm, 77749961632327x8359961632327 cm, 8359961632327x89649961632327 cm, 89649961632327x9599961632327 cm, 9599961632327x102549961632327 cm, 102549961632327x10939961632327 cm, 10939961632327x116549961632327 cm, 116549961632327x12409961632327 cm, 12409961632327x131949961632327 cm, 131949961632327x14019961632327 cm, 14019961632327x148749961632327 cm, 148749961632327x15769961632327 cm, 15769961632327x166949961632327 cm, 166949961632327x17659961632327 cm, 17659961632327x186649961632327 cm, 186649961632327x19709961632327 cm, 19709961632327x207849961632327 cm, 207849961632327x21899961632327 cm, 21899961632327x230449961632327 cm, 230449961632327x24239961632327 cm, 24239961632327x254749961632327 cm, 254749961632327x26759961632327 cm, 26759961632327x280849961632327 cm, 280849961632327x29459961632327 cm, 29459961632327x308749961632327 cm, 308749961632327x32339961632327 cm, 32339961632327x338449961632327 cm, 338449961632327x35399961632327 cm, 35399961632327x369949961632327 cm, 369949961632327x38639961632327 cm, 38639961632327x403249961632327 cm, 403249961632327x42059961632327 cm, 42059961632327x438349961632327 cm, 438349961632327x45659961632327 cm, 45659961632327x475249961632327 cm, 475249961632327x49439961632327 cm, 49439961632327x513949961632327 cm, 513949961632327x53399961632327 cm, 53399961632327x554449961632327 cm, 554449961632327x57539961632327 cm, 57539961632327x59679961632327 cm, 59679961632327x618649961632327 cm, 618649961632327x640949961632327 cm, 640949961632327x66369961632327 cm, 66369961632327x68689961632327 cm, 68689961632327x710549961632327 cm, 710549961632327x734649961632327 cm, 734649961632327x75919961632327 cm, 75919961632327x78419961632327 cm, 78419961632327x809649961632327 cm, 809649961632327x83559961632327 cm, 83559961632327x861949961632327 cm, 861949961632327x88879961632327 cm, 88879961632327x916049961632327 cm, 916049961632327x94379961632327 cm, 94379961632327x971949961632327 cm, 971949961632327x100059961632327 cm, 100059961632327x1029649961632327 cm, 1029649961632327x105919961632327 cm, 105919961632327x1089249961632327 cm, 1089249961632327x111979961632327 cm, 111979961632327x1150849961632327 cm, 1150849961632327x118239961632327 cm, 118239961632327x1214449961632327 cm, 1214449961632327x124709961632327 cm, 124709961632327x1280249961632327 cm, 1280249961632327x131399961632327 cm, 131399961632327x1348249961632327 cm, 1348249961632327x138309961632327 cm, 138309961632327x1418449961632327 cm, 1418449961632327x145439961632327 cm, 145439961632327x1490849961632327 cm, 1490849961632327x152789961632327 cm, 152789961632327x1565449961632327 cm, 1565449961632327x160359961632327 cm, 160359961632327x1642249961632327 cm, 1642249961632327x168149961632327 cm, 168149961632327x1721249961632327 cm, 1721249961632327x176159961632327 cm, 176159961632327x1802449961632327 cm, 1802449961632327x184389961632327 cm, 184389961632327x1885849961632327 cm, 1885849961632327x192839961632327 cm, 192839961632327x1971449961632327 cm, 1971449961632327x201509961632327 cm, 201509961632327x2059249961632327 cm, 2059249961632327x210389961632327 cm, 210389961632327x2149049961632327 cm, 2149049961632327x219469961632327 cm, 219469961632327x2240849961632327 cm, 2240849961632327x228749961632327 cm, 228749961632327x2334649961632327 cm, 2334649961632327x238229961632327 cm, 238229961632327x2430449961632327 cm, 2430449961632327x247909961632327 cm, 247909961632327x2528249961632327 cm, 2528249961632327x257789961632327 cm, 257789961632327x2628049961632327 cm, 2628049961632327x267869961632327 cm, 267869961632327x2729849961632327 cm, 2729849961632327x278149961632327 cm, 278149961632327x2833649961632327 cm, 2833649961632327x288629961632327 cm, 288629961632327x2939449961632327 cm, 2939449961632327x299309961632327 cm, 299309961632327x3047249961632327 cm, 3047249961632327x310189961632327 cm, 310189961632327x3157049961632327 cm, 3157049961632327x321269961632327 cm, 321269961632327x3268849961632327 cm, 3268849961632327x332549961632327 cm, 332549961632327x3382649961632327 cm, 3382649961632327x344029961632327 cm, 344029961632327x3498449961632327 cm, 3498449961632327x355709961632327 cm, 355709961632327x3616249961632327 cm, 3616249961632327x367589961632327 cm, 367589961632327x3736049961632327 cm, 3736049961632327x379669961632327 cm, 379669961632327x3857849961632327 cm, 3857849961632327x391949961632327 cm, 391949961632327x3981649961632327 cm, 3981649961632327x404429961632327 cm, 404429961632327x4107449961632327 cm, 4107449961632327x417109961632327 cm, 417109961632327x4235249961632327 cm, 4235249961632327x429989961632327 cm, 429989961632327x4365049961632327 cm, 4365049961632327x443069961632327 cm, 443069961632327x4496849961632327 cm, 4496849961632327x456349961632327 cm, 456349961632327x4630649961632327 cm, 4630649961632327x469829961632327 cm, 469829961632327x4766449961632327 cm, 4766449961632327x483509961632327 cm, 483509961632327x4904249961632327 cm, 4904249961632327x497389961632327 cm, 497389961632327x5044049961632327 cm, 5044049961632327x511469961632327 cm, 511469961632327x5185849961632327 cm, 5185849961632327x525749961632327 cm, 525749961632327x5329649961632327 cm, 5329649961632327x540229961632327 cm, 540229961632327x5475449961632327 cm, 5475449961632327x554909961632327 cm, 554909961632327x5623249961632327 cm, 5623249961632327x569789961632327 cm, 569789961632327x5773049961632327 cm, 5773049961632327x584869961632327 cm, 584869961632327x5924849961632327 cm, 5924849961632327x600149961632327 cm, 600149961632327x6078649961632327 cm, 6078649961632327x615629961632327 cm, 615629961632327x6234449961632327 cm, 6234449961632327x631309961632327 cm, 631309961632327x6392249961632327 cm, 6392249961632327x647189961632327 cm, 647189961632327x6552049961632327 cm, 6552049961632327x663269961632327 cm, 663269961632327x6713849961632327 cm, 6713849961632327x679549961632327 cm, 679549961632327x6877649961632327 cm, 6877649961632327x696029961632327 cm, 696029961632327x7043449961632327 cm, 7043449961632327x712709961632327 cm, 712709961632327x7211249961632327 cm, 7211249961632327x729589961632327 cm, 729589961632327x7381049961632327 cm, 7381049961632327x746669961632327 cm, 746669961632327x7552849961632327 cm, 7552849961632327x763949961632327 cm, 763949961632327x7726649961632327 cm, 7726649961632327x781429961632327 cm, 781429961632327x7902449961632327 cm, 7902449961632327x799109961632327 cm, 799109961632327x8080249961632327 cm, 8080249961632327x817089961632327 cm, 817089961632327x8262049961632327 cm, 8262049961632327x835369961632327 cm, 835369961632327x8445849961632327 cm, 8445849961632327x853849961632327 cm, 853849961632327x8631649961632327 cm, 8631649961632327x872529961632327 cm, 872529961632327x8819449961632327 cm, 8819449961632327x891409961632327 cm, 891409961632327x9009249961632327 cm, 9009249961632327x910489961632327 cm, 910489961632327x9201049961632327 cm, 9201049961632327x929769961632327 cm, 929769961632327x9394849961632327 cm, 9394849961632327x949249961632327 cm, 949249961632327x9590649961632327 cm, 9590649961632327x968929961632327 cm, 968929961632327x9788449961632327 cm, 9788449961632327x988809961632327 cm, 988809961632327x9988249961632327 cm, 9988249961632327x1008889961632327 cm, 1008889961632327x101899961632327 cm, 101899961632327x1029159961632327 cm, 1029159961632327x1039369961632327 cm, 1039369961632327x1049629961632327 cm, 1049629961632327x1059939961632327 cm, 1059939961632327x1070299961632327 cm, 1070299961632327x1080709961632327 cm, 1080709961632327x1091179961632327 cm, 1091179961632327x1101709961632327 cm, 1101709961632327x1112299961632327 cm, 1112299961632327x1122949961632327 cm, 1122949961632327x1133659961632327 cm, 1133659961632327x1144429961632327 cm, 1144429961632327x1155259961632327 cm, 1155259961632327x1166149961632327 cm, 1166149961632327x1177099961632327 cm, 1177099961632327x1188109961632327 cm, 1188109961632327x1199179961632327 cm, 1199179961632327x1210309961632327 cm, 1210309961632327x1221509961632327 cm, 1221509961632327x1232779961632327 cm, 1232779961632327x1244119961632327 cm, 1244119961632327x1255529961632327 cm, 1255529961632327x1266999961632327 cm, 1266999961632327x1278529961632327 cm, 1278529961632327x1290119961632327 cm, 1290119961632327x1301779961632327 cm, 13

1. Product Model

Model	ARIMA(AR,MA,ARMA)
Estimation	ML, OLS, GLS
Tests	W, Ljung-Box
Forecast	ML, AR, MA, ARMA, GARCH
Software	SPSS, EViews, R, SAS, STATA, MATLAB, etc.
Applications	Finance, Economics, Engineering, etc.
References	Box and Jenkins (1976), etc.

2. Prendre l'âge

Key Findings

End of Paper Warning: When the printer is powered on without paper, long green flashes about 15 seconds. The printer will turn off, then the indicator light will blink twice, signaling end of paper warning.

2) Installing the App and Corporate Email

Download the drive from the drive download website to print via USB connection (Ubuntu drive printing is not supported at the moment).

Drive download pdf was also in the file is:

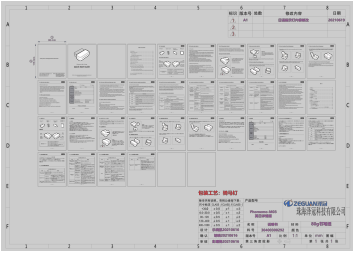
A comprehensive troubleshooting guide for Phomemo A281M, A282M, and A285M thermal printers, covering product information, usage, common machine and connection issues, printing problems, and app-related questions.



[pdf]

5907085521596 m03 pl Instrukcja obsługi Max Elektro①Wybierz funkcję „Drukuj obraz w aplikacji Phomemo ②Dodaj zdjęcia radiowego Mini drukarka M03 jest zgodny z dyrektywą 2014 53 UEgproxymaxelektro storage file pimcore import 2025 4 9 8762f2fca9465941a123a42281a6854d phomemo instrukcja obsługi |||

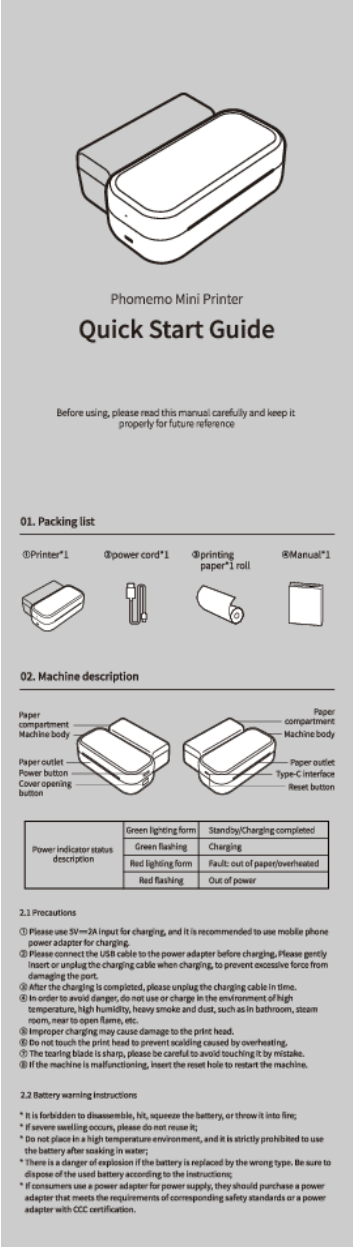
Mini drukarka Instrukcja obsługi Przed rozpoczęciem użytkowania należy uważnie przeczytać niniejszą instrukcję i zachować ją na przyszłość. plikacji Phomemo - naciśnij ikonę w prawym górnym rogu głównego interfejsu aplikacji Phomemo - wybierz **M03** z listy, aby się połączyć - zakończ łączenie urządzenia. Metoda 2: Po uruchomieniu naciśnij dwukrotnie... lang:pl score:29 filesize: 1.97 M page_count: 12 document date: 2024-10-15



[pdf] Instructions Accessories Label

30400300292 Phomemo M03 A1 Instructions for Use IFU Mini Printer M03 3 inch Portable Sticker Small Bluetooth Thermal Inkless Gifts Study Pictures Labels Compatible with Phone Tablet Green Computers Accessories B19krb NORL m media amazon images I |||

... lang:pl score:18 filesize: 3.45 M page_count: 1 document date: 2021-06-16



03. APP download method

Please search for "Phomemo" in APP store, download and install it.

1. Search for Phomemo in the Apple App Store, click to download and install.
2. Search for Phomemo in the Google App Store, click to download and install.

04. App connection method



1. Please charge the printer for the first use, and then press and hold the power button for about 3 seconds to turn it on
2. Connect the machine



Method 1:

Turn on the Bluetooth of a phone → open the Phomemo APP → click the icon in the upper right corner of Phomemo APP main interface → select M03 in the list to connect → complete the machine connection



Method 2:

After starting up, double-click the start-up button printing QR code → scan the code in the Phomemo APP to connect

Tips: User can view the usage tutorial in the APP, and connect the machine according to video operation

05. How to replace the printing paper

1. Separate machine body and paper compartment manually, and open the paper compartment cover at the paper outlet



2. Take out the consumable roller, load new consumable and put it in the paper compartment



3. Adjust the baffles on both sides, straighten the printing paper and close the paper compartment (the printing side of the consumables shall be facing up)



4. Open machine cover, connect the paper compartment to machine body, straighten the printing paper to the paper outlet, and close the machine cover to complete installation



*Tips: How to distinguish the front and back of printing paper

- ① Take out a printing paper and use your nails to scratch the paper firmly, and then install with the color side up.
- ② Please make sure that the smooth surface is facing up and aligned with the printing port.

06. Warranty description

100% warranty within 1 year

* Although the product has undergone strict testing and quality inspection, accidents may occur during transportation, resulting in damages to the machine. If there is any problem with the printer, please contact us through the following methods. We have a quick response after sales team to solve the problem professionally.
* If the problem is still not solved through our joint efforts, we will replace you with a new machine for free, and you need not to pay any fees. Your satisfaction makes us advance.

07. After-sales information

Online Contact information:

Whatsapp: +86 13928080284 / +86 15336193665

Skype: Phomemo Team-Jessie / Phomemo Team-Helen

Customer Service phone number: +1 855 957 5323 (US only)

Service time: Mon-Fri 9AM-5PM (EST) for any questions & suggestions.

Email address: support@phomemo.com

Official Website: www.phomemo.com

🔍 Please search for "Phomemo" to get the printer operation guide

08. Warranty card

☐ Return ☐ Exchange ☐ Repair

User Info	Name:	Sex:	Phone:
	Address:		
Product Info	Purchase date:		
	Product order number:		
Requirements of return / replacement / repair	Product Serial Number:		
	Reason description:		
Maintenance records	Failure condition:		Maintenance person:
	Handling situation:		Delivery date:
	Maintenance ticket number:		Delivery date:

Product certification

Inspector:

Delivery date:

09. Phomemo official printing paper type

- ① Tri-proof thermo-sensitive paper: No bisphenol-A contained. Have a certain degree of scratch resistance. The image retention is up to 7 or 10 years.
- ② Colored paper: No bisphenol-A contained. Include yellow, pink and blue paper.

Phomemo Mini Printer M03 Quick Start Guide

Get started with your Phomemo Mini Printer (M03) using this comprehensive quick start guide. Learn about setup, app connection, paper loading, printing functions, troubleshooting, and warranty information.

lang:pl score:17 filesize: 3.68 M page_count: 1 document date: 2023-12-20

image retention is up to 5 years.

③ Adhesive paper: No biophenol-A contained. The printing paper has adhesiveness on one side, which can be directly pasted and used. The image retention is up to 10 years.

④ Semi-permeable/transparent thermo-sensitive film: No biophenol-A contained. Water-proof, oil-proof and scratch-resistant; excellent photo-taking effect. The image retention is up to 15 years.

* The above-mentioned printing paper is the official consumable of Phomemo.

* If you fail to use the official consumables, causing the printer to malfunction, you will not be entitled to enjoy the "three guarantees" policy.

10. Specific function operation guidelines

10.1 Print images operation guidelines

Steps:

① Select the "Print Images" function in Phomemo APP

② Add the photos you need to print

③ Set the picture in the work bar area. You can change the picture, modify the picture, adjust the brightness, contrast, or rotate and crop the picture

④ Choose the photo printing density. Printing density: Fine, Medium, Thick, Dedicated

⑤ Select the "Print" button in the lower right corner to complete picture printing

10.2 Graphic operation guidelines

There are a large number of hand-painted original materials in the material library. Various personalized editing can be performed under this function. The operation steps are as follows.

① Select the "Graphic" function in Phomemo APP

② Click any Graphic to enter the editing area

③ In the "Functional Area", you can add text, tables, pictures, stickers, and QR code functions for personalized editing, and the edited content will be displayed in the "Editing Area".

Features	Instructions
Text	Select the "Text" option to insert text box into the body for editing, and you can edit any content; font and alignment are optional
Table	Select the "Table" option to insert a table into the editing area for editing
Image	Select the "Image" option to insert a picture into the editing area for editing or printing
Emoji	Select the "Emoji" option to insert an emoji into the editing area for editing or printing
QR code	Select the "QR code" option to enter the editing area, you can enter any text, and the entered text will be output in the form of a QR code

④ After editing the content, click the print icon " " in the upper right corner to complete printing.

Tips: You can view the operating tutorial in the APP, and connect the machine according to video tutorial.

10.3 Windows application document printing operation guidelines

Select the "Print Web" function in the Phomemo APP, and after entering the web address, you can click print button on the page to print the information of the web page.

Tips: You can view the operating tutorial in the APP, and connect the machine according to the video tutorial.

11. Common problems and solutions

Common problems and solutions		
Problem	Reason	Solution
Half margin of page printed	1. The paper roll holder is not installed correctly	Reinstall according to the instructions of paper roll adapter
	2. The machine print head cannot rebound	Press the print head to rebound
Machine can't be charged	1. Can't charge	Connect the machine, check the battery capacity at the Bluetooth connection in the upper right corner. You can check the remaining power of the machine
	2. The charger is heated	Use the five-3A charging cable to charge. Under normal circumstances, the machine can be fully charged in 3-5 hours
	3. Unable to activate	Do not leave the battery uncharged for a long period of time (about three months), as this may cause the battery to run out reliably and fail to activate charging
Machine indicator flashes fast	1. The battery is less than 20%	The indicator light will flash quickly
No response after long pressing the power button	1. The machine has no power	Charge it for half an hour and then turn it on
Upper and lower covers are stuck when opening	1. The upper and lower covers of the new machine have a running-in period	Cover a few times back and forth
	2. The machine is getting the new compartment (metal alcohol cleaning bridge) stuck	Open the paper compartment of the machine and clean the new compartment (metal alcohol cleaning)
Cannot connect to machine's Bluetooth	1. Mobile phone (Bluetooth is not turned on)	Turn on the phone's Bluetooth (Bluetooth cannot turn on automatically, you need to turn it on manually)
	2. APP can't find the machine	The machine is not turned on. Turn on the machine to a normal state
	3. Mobile phone positioning permission is not turned on	For Android phones, open the phone positioning permission
The machine doesn't print	1. No words on the paper	The paper roll is loaded upside down, resulting in the printing side of the paper roll (inner roll) not being loaded; all paper rolls shall be installed with the printing side facing up
	2. System lag	Restart phone
	3. There are black bars	The paper is too big and jammed. Please take out some paper
		No electricity. Charge the machine (half an hour)
	4. Indicator flashes	Reinstall the paper roll, the paper roll is not pulled to the paper outlet; pull the paper roll out by a section, preferably beyond the paper outlet
Paper jam when printing	1. The paper roll is loose and jammed	Remove the support of paper roll, manually wind the paper roll and then install the support; or directly put in the paper roll to print
	2. The machine has foreign objects	Open the paper compartment of the machine and clean the new compartment (metal alcohol cleaning)
APP shows the printer is out of paper	1. No paper	Reinstall the paper roll, the paper roll is not pulled to the paper outlet; pull the paper roll out by a section, preferably beyond the paper outlet
	2. The sensor cannot recognize	The printer detects a paper sensor failure; clean the sensor with an alcohol-wet sticky cotton swab
	3. System lag	Uninstall and reinstall
Printing succeeded, but the paper printed has no content	1. The paper roll is loaded upside down	Take out the paper roll and use your finger to draw back on the paper, and install with the color side facing up
Missing printing	1. The paper roll holder is not installed correctly	Reinstall according to the instructions of paper roll adapter
	2. Paper roll expansion hole	Take out the paper roll and cut off the welded part, reinstall for printing
	3. The machine box cover is not in place	The cover of machine box is not closed tightly. Reinstall the cover and press the cover firmly with your hand
	4. Low power	No power. Charge and then print
		Adjust the print density to the highest
Printed font is different from edit font	1. Paper roll has been left in air for a long time	Dump paper roll, leaving it machine or in air for a long time may cause missing printing
		Uninstall paper rolls are packed in sealed bags or boxes
Printed font is different from edit font	1. When printing the same content with different mobile phones, the fonts are different	Due to different phone models and versions, the printed fonts will be different; set the phone system font as the default font
		Thermo-sensitive paper cannot be pasted with glue
		Left the words before printing, and try to avoid using oil-based pens or gel pens on the printing paper after printing
		Ambient temperature, humidity, or alcohol, disinfectant, sweat on your hands, or hand sanitizer will affect the fading of words
Printed font on paper roll	Improper use and preservation	Please choose to avoid light and store the printing paper in a dry environment
		After printing, the printed surface should not be in contact with another printed surface or transparent bag for storage
		If you need to stick the printing paper, please select the official paper with adhesive backing. Some alkaline liquid adhesives will accelerate the fading