

REACHER R3S

REACHER R3S Wooden Dual Alarm Clock and White Noise Machine

USER MANUAL

Introduction

This manual provides instructions for the setup, operation, and maintenance of your REACHER R3S Wooden Dual Alarm Clock and White Noise Machine. This device combines a digital alarm clock, a white noise sound machine, and a USB charging station into a single unit, designed for bedroom use.



Dual Alarm Clock



Sleep Sound Machine



USB Charging Station



The REACHER R3S device functions as a dual alarm clock, a sleep sound machine, and a USB charging station.

Product Features

- **4-in-1 Functionality:** Combines an alarm clock, sound machine, and charging station.
- **Customized Dual Alarms:** Set two independent alarms with options for weekday, weekend, or 7-day operation.
- **6 Natural Alarm Sounds:** Choose from flute, bird, piano, buzzer, bell, and beep.
- **Adjustable Alarm Volume:** 25 volume levels for alarms.
- **Snooze Function:** Adjustable snooze duration from 1 to 15 minutes.
- **12 High-Quality Soothing Sounds:** Includes white, brown, pink noise, 3 fan sounds, forest (birds), lullaby, summer night (crickets), rain, thunderstorm, and ocean wave.
- **Sound Machine Timer:** Auto-off timer for soothing sounds (15 to 150 minutes or non-stop).
- **Adjustable Sound Machine Volume:** 30 volume levels for white noise.
- **0-100% Dimmable Display:** Thumb wheel dimmer for precise brightness control.
- **USB Charging Port:** Charge smartphones, tablets, or other 5V input devices.
- **Battery Backup:** Maintains clock settings and alarm function during power outages (requires 3 AAA

batteries, not included).

- **Compact Design:** Small size (2.28 x 3.78 x 3.35 inches) suitable for various spaces.

Package Contents

- REACHER R3S Alarm Clock and White Noise Machine
- AC Power Adapter with 49-inch cord
- User Manual

Controls and Display

The device features an intuitive layout of buttons on the top and sides for easy access to all functions. The front display shows the current time, alarm settings, and other indicators.

Top Panel Buttons: (Refer to device for exact button labels and positions)

- **Time Set:** For setting the current time.
- **Alarm 1 Set:** For setting the first alarm.
- **Alarm 2 Set:** For setting the second alarm.
- **Snooze/Light:** Activates snooze during an alarm or adjusts display brightness.
- **Sound Machine On/Off:** Activates or deactivates the white noise function.
- **Sound Selection:** Cycles through available soothing sounds.
- **Volume Up/Down:** Adjusts sound machine volume.

Side Panel Controls:

- **Screen Dimmer Wheel:** Adjusts display brightness from 0% to 100%.
- **USB Charging Port:** For charging external devices.

Setup

1. Powering On

Connect the provided AC power adapter to the DC input port on the back of the alarm clock and plug it into a standard wall outlet. The display will illuminate.

For battery backup, insert 3 AAA batteries (not included) into the battery compartment on the bottom of the unit. This ensures that time settings and alarms are maintained during a power outage.

Outlet Powered

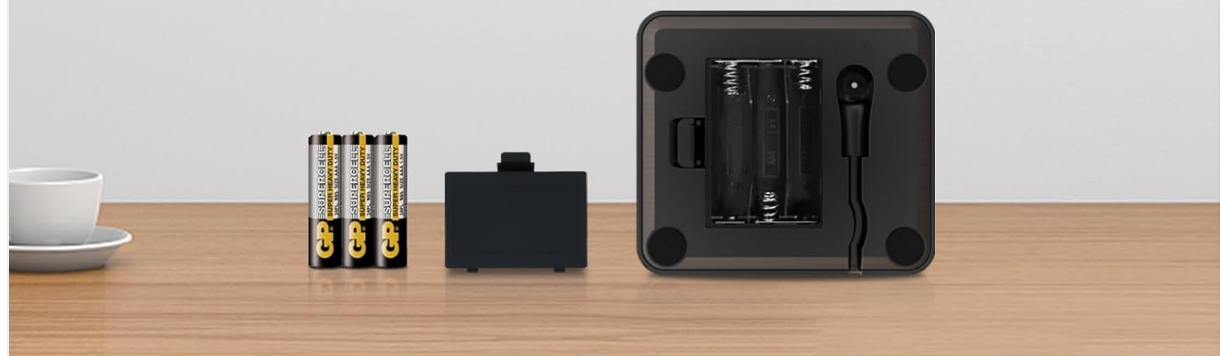
AC adapter and 49in cord included



OR

Battery Backup

keeps working even without AC power



The device can be powered by the included AC adapter or use AAA batteries for backup.

2. Setting the Time

1. Press and hold the **Time Set** button. The hour display will begin to flash.
2. Use the +/- buttons (or similar navigation buttons) to adjust the hour. Pay attention to AM/PM indicators.
3. Press the **Time Set** button again to confirm the hour and move to minute adjustment. The minute display will flash.
4. Use the +/- buttons to adjust the minutes.
5. Press the **Time Set** button one last time to save the current time.

Operating Instructions

1. Setting Dual Alarms

The REACHER R3S features two independent alarms (Alarm 1 and Alarm 2) that can be configured for different schedules.

Dual Alarm for Weekday/Weekend/ 7-day



WEEKDAY WEEKEND → 3 Modes

All-7-Day MON THE WED THU FRI SAT SUN

Weekday MON THE WED THU FRI

Weekend SAT SUN

The dual alarm system allows for separate weekday and weekend settings, or an all-7-day alarm.

1. Press and hold either the **Alarm 1 Set** or **Alarm 2 Set** button. The alarm hour will flash.
2. Use the **+/-** buttons to adjust the alarm hour.
3. Press the respective **Alarm Set** button again to confirm the hour and move to minute adjustment.
4. Use the **+/-** buttons to adjust the alarm minutes.
5. Press the **Alarm Set** button again to select the alarm schedule: **All-7-Day**, **Weekday (MON-FRI)**, or **Weekend (SAT-SUN)**.
6. Press the **Alarm Set** button one last time to save the alarm setting. The alarm icon will appear on the display.
7. To turn an alarm off, press the corresponding **Alarm Set** button until the alarm icon disappears from the display.

2. Alarm Sounds and Volume

The alarm clock offers 6 natural wake-up sounds and 25 volume levels.

6 Wake Up Sounds

Gentle Alarm Volume Increase



Flute sound



Bird Sound



Piano



Stream



Digital Bell



Beep



5-30 Volume Levels



Choose from 6 gentle alarm sounds and adjust the volume from 5 to 30 levels.

1. During alarm setting, after selecting the schedule, you can cycle through the 6 alarm sounds (Flute, Bird, Piano, Buzzer, Bell, Beep) using the +/- buttons.
2. To adjust the alarm volume, use the dedicated **Volume Up/Down** buttons while the alarm is sounding or during the alarm setup process.

3. Snooze Function

When an alarm sounds, press the **Snooze/Light** button to temporarily silence the alarm for 9 minutes. This can be repeated up to 7 times. To turn off the alarm completely, press any other button.

4. White Noise Machine

The device provides 12 soothing sounds to aid sleep or block out unwanted noise.

Blocking Noise, Sweet Dreams with **12** Soothing Sounds



The white noise machine helps block disruptive sounds for improved sleep.

12 Soothing Sounds



6 Nature Sounds



White/Brown/Pink Noise



3 Fan Sounds



White Noise



Pink noise



Brown Noise



3 Fan Sounds



Forest



Lullaby



Summer night



Rain



Thunderstorm



Ocean Wave



A selection of 12 soothing sounds is available, including various noise types, fan sounds, and nature sounds.

1. Press the **Sound Machine On/Off** button to activate the white noise function.
2. Press the **Sound Selection** button to cycle through the 12 available sounds.
3. Use the **Volume Up/Down** buttons to adjust the sound machine volume (30 levels).
4. To set an auto-off timer, press the **Timer** button (if available, or refer to specific button for timer function). You can select durations from 15 to 150 minutes, or choose non-stop play.
5. Press the **Sound Machine On/Off** button again to turn off the white noise.

5. Display Dimmer

The display brightness can be adjusted from 0% (off) to 100% using the thumb wheel dimmer on the side of the unit.

0-100% Dimmable Display

Easily be read from across the room



The display brightness can be precisely adjusted from completely off to fully bright using the side dimmer wheel.

6. USB Charging

Connect your smartphone, tablet, or other 5V input USB-powered device to the USB charging port located on the side/back of the alarm clock. The device will begin charging automatically.

Maintenance

To maintain your REACHER R3S alarm clock:

- Wipe the unit with a soft, dry cloth.
- Do not use abrasive cleaners or solvents.
- Keep the device away from water or excessive moisture.
- Ensure proper ventilation and avoid blocking the speaker grilles.

Troubleshooting

- **No Power/Display Off:** Ensure the AC adapter is securely plugged into both the device and a working wall outlet. Check if batteries are correctly installed for backup power.

- **Alarm Not Sounding:** Verify that the alarm is set correctly (AM/PM, time, and schedule). Ensure the alarm icon is visible on the display. Check alarm volume settings.
- **Sound Machine Not Working:** Ensure the sound machine is turned on. Check volume settings.
- **Display Too Bright/Dim:** Adjust the screen dimmer wheel on the side of the unit.
- **USB Charging Not Working:** Ensure the device is properly connected to the USB port. Check if the external device is compatible and its charging cable is functional.

Specifications

Brand	REACHER
Model Number	R3S
Colour	Wood Grain
Display Type	Digital
Power Source	Corded Electric (AC Adapter)
Battery Backup	3 AAA batteries required (not included)
Material	Wood
Item Weight	227 g (0.5 Pounds)
Item Dimensions (LxWxH)	8.5 x 3.8 x 9.6 Centimeters (2.28 x 3.78 x 3.35 inches)
Manufacturer	Kerchan Technology Group Limited

Warranty and Support

Specific warranty details and direct support contact information are not provided within this manual. Please refer to the product packaging or the retailer's website for warranty claims and customer support.