

Forte W2QS323E71-C752

Forte Winn 2 Sliding Door Wardrobe Instruction Manual

Model: W2QS323E71-C752

1. INTRODUCTION

This manual provides detailed instructions for the assembly, operation, and maintenance of your Forte Winn 2 Sliding Door Wardrobe. Please read this manual thoroughly before beginning assembly or use to ensure safe and correct installation and to maximize the lifespan of your product.

The Forte Winn 2 wardrobe is a modern storage solution featuring sliding doors, integrated shelves, and hanging rails. Its design and color options are intended to complement various interior styles. The wardrobe is constructed from durable materials, including particle board, metal, and plastic components, ensuring stability and longevity.

Important Safety Warning:

Wall mounting is required for this wardrobe to prevent tipping. All necessary fixings for wall mounting are included. Failure to properly secure the wardrobe to a wall can result in serious injury.

2. PRODUCT OVERVIEW AND COMPONENTS

The Forte Winn 2 wardrobe is designed for efficient storage with its spacious interior. Key features include:

- Durable particle board construction.
- Sliding doors for space-saving access.
- Integrated shelves with a maximum weight capacity of 10 kg each.
- Metal hanging rails with a maximum weight capacity of 15 kg each.
- Aluminum handles and door guides for smooth operation and durability.
- Three spacious drawers for additional storage.

The wardrobe is delivered disassembled and includes all necessary hardware for assembly and wall mounting.



Figure 2.1: Front view of the Forte Winn 2 Sliding Door Wardrobe, showcasing its design with wood and concrete-look panels.



Figure 2.2: The Forte Winn 2 Wardrobe integrated into a bedroom environment, highlighting its modern aesthetic.

3. ASSEMBLY AND SETUP

The Forte Winn 2 wardrobe requires assembly. Detailed assembly instructions are provided with the product. Please follow these instructions carefully, step-by-step, to ensure correct and safe construction.

3.1 Before You Begin:

- Ensure you have sufficient space for assembly.
- Unpack all components and verify against the parts list in the provided assembly manual.
- Gather necessary tools (e.g., screwdriver, hammer, level).
- It is recommended to have at least two people for assembly due to the size and weight of the components.

3.2 Assembly Steps:

1. Begin by assembling the main frame of the wardrobe according to the provided diagrams.

2. Install the internal shelves and hanging rails. Ensure they are securely fastened.
3. Assemble the drawers and integrate them into their designated sections.
4. Attach the sliding door mechanisms and install the doors. Pay close attention to the alignment of the doors for smooth operation.
5. **Crucial Step: Wall Mounting.** Once the wardrobe is assembled, it must be securely mounted to a wall using the provided fixings. Identify a suitable wall location, drill pilot holes if necessary, and attach the anti-tip devices. This step is essential for safety.



Figure 3.1: External dimensions of the Forte Winn 2 Wardrobe (Width: 200.1 cm, Height: 200.5 cm, Depth: 61.2 cm).

4. OPERATION

The Forte Winn 2 wardrobe is designed for straightforward daily use.

4.1 Sliding Doors:

To open or close the sliding doors, gently push or pull the door panel along its track. The aluminum guides ensure smooth movement. Avoid forcing the doors if they encounter resistance; check for obstructions in the track.

4.2 Shelves and Hanging Rails:

Utilize the shelves for folded clothing, accessories, or storage boxes. Do not exceed the maximum weight capacity of 10 kg per shelf. The hanging rails are suitable for garments on hangers, with a maximum weight capacity of 15 kg per rail.

4.3 Drawers:

The integrated drawers provide additional storage for smaller items. Pull them out gently to open and push them in firmly to close.



Figure 4.1: Internal organization of the wardrobe, demonstrating storage capacity for clothes, luggage, and accessories.

5. CARE AND MAINTENANCE

Proper care will help maintain the appearance and functionality of your wardrobe for years to come.

5.1 Cleaning:

- Wipe surfaces with a soft, damp cloth.
- For stubborn marks, use a mild, non-abrasive cleaner specifically designed for furniture surfaces.
- Avoid using harsh chemicals, abrasive cleaners, or scouring pads, as these can damage the finish.
- Dry surfaces immediately after cleaning to prevent water spots.

5.2 General Maintenance:

- Periodically check all screws and fittings to ensure they remain tight. Retighten if necessary.
- Keep the sliding door tracks clean and free of dust or debris to ensure smooth operation.
- Avoid placing excessively heavy items on shelves or hanging rails beyond their stated capacity.
- Ensure the wardrobe remains securely anchored to the wall. Re-check wall fixings periodically.

6. TROUBLESHOOTING

This section addresses common issues you might encounter with your Forte Winn 2 wardrobe.

Problem	Possible Cause	Solution
Sliding doors do not move smoothly or are misaligned.	<ul style="list-style-type: none">• Debris in the door tracks.• Loose or improperly installed door guides/rollers.• Uneven floor or wardrobe not level.	<ul style="list-style-type: none">• Clean the door tracks thoroughly.• Check and tighten all door guide and roller fixings. Refer to assembly instructions for correct installation.• Ensure the wardrobe is placed on a level surface. Use shims if necessary.
Wardrobe feels unstable or wobbly.	<ul style="list-style-type: none">• Loose assembly screws.• Wall mounting not properly secured.	<ul style="list-style-type: none">• Retighten all assembly screws.• Verify that the wardrobe is securely mounted to the wall using the provided anti-tip hardware. Re-secure if loose.
Drawers do not open/close easily.	<ul style="list-style-type: none">• Drawer runners are misaligned or obstructed.• Drawer contents are too heavy or unevenly distributed.	<ul style="list-style-type: none">• Check drawer runners for proper alignment and clear any obstructions.• Reduce the weight or redistribute contents within the drawer.

7. PRODUCT SPECIFICATIONS

Feature	Detail
Brand	Forte
Model Number	W2QS323E71-C752
Color	Artisan Oak - Dark Grey Concrete Look
Dimensions (L x W x H)	61.2 x 200.1 x 200.5 cm (Depth x Width x Height)
Item Weight	52.7 Kilograms
Material	Engineered Wood, Metal, Plastic
Maximum Shelf Weight Capacity	10 Kilograms
Maximum Hanging Rail Weight Capacity	15 Kilograms

Feature	Detail
Special Feature	Drawers, Sliding Doors
Mounting Type	Floor Mount (Wall mounting required for stability)

8. WARRANTY AND SUPPORT

8.1 Spare Parts Availability:

Spare parts for this product are available for a period of 2 years from the date of purchase.

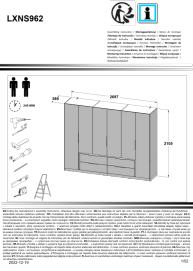


8.2 Customer Support:

For any questions regarding assembly, missing parts, or product issues, please contact your retailer or the manufacturer's customer service. Please have your model number (W2QS323E71-C752) and proof of purchase ready when contacting support.



© 2025 Forte. All rights reserved. This manual is for informational purposes only.

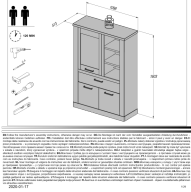
Related Documents - W2QS323E71-C752

	<p>FORTE LXNS962 Wardrobe Assembly Instructions</p> <p>Comprehensive assembly guide for the FORTE LXNS962 wardrobe, featuring detailed step-by-step instructions, parts identification, and essential care guidelines.</p>
	<p>Forte Refrigerator-Freezer Instruction Manual (Models F15TFRESWW, F15TFRESSS)</p> <p>This comprehensive instruction manual for Forte Refrigerator-Freezer models F15TFRESWW and F15TFRESSS provides essential safety guidelines, detailed product features, installation instructions, usage tips for optimal food storage, maintenance procedures, troubleshooting steps, and warranty information to ensure safe and efficient operation.</p>
	<p>Forte Refrigerator Service Manual: Troubleshooting and Component Guide</p> <p>Comprehensive service manual for Forte refrigerators, detailing installation, theory of operation, component identification, error codes, troubleshooting procedures, and maintenance guides for technicians.</p>



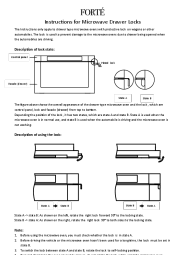
[FORTE Electric Scooter User Manual and Safety Guide](#)

Comprehensive guide for FORTE electric scooters, covering safety instructions, assembly, operation, maintenance, and technical specifications for various models.



Assembly Instructions for DURV521L-C818 Furniture

Detailed assembly instructions for the DURV521L-C818 furniture, including parts list, diagrams, and step-by-step guidance for assembly. Safety precautions and care guidelines are also provided.



Instructions for Forte Microwave Drawer Locks

Guide to operating and understanding the lock states for Forte microwave drawer locks, ensuring safe use in vehicles during transit.