

ESSEBAGNO 9015981

ESSEBAGNO Kissy Black Thermostatic Shower Column User Manual

Model: 9015981

1. INTRODUCTION

Thank you for choosing the ESSEBAGNO Kissy Black Thermostatic Shower Column. This manual provides essential information for the safe installation, operation, and maintenance of your new shower system. Please read these instructions carefully before installation and retain them for future reference.



Image 1.1: The ESSEBAGNO Kissy Black Thermostatic Shower Column.

2. SAFETY INFORMATION

To ensure safe operation and prevent damage, observe the following safety guidelines:

- Installation must be performed by a qualified professional in accordance with local plumbing and building codes.
- Ensure the water supply is turned off before beginning any installation or maintenance work.
- Check all connections for leaks after installation.
- Do not use abrasive cleaners or harsh chemicals on the product's finish, as this may cause damage.
- The thermostatic mixer is designed to maintain a constant water temperature. Always test the water temperature before stepping into the shower.

3. PACKAGE CONTENTS

Verify that all components are present before starting the installation:

- Shower Column (main vertical bar)
- Thermostatic Mixer
- Rain Shower Head
- Handheld Shower Head
- Shower Hose
- Wall Mount Brackets and Fixings
- Installation Manual

4. SETUP AND INSTALLATION

Follow these steps for proper installation of your shower column:

1. **Prepare the Installation Area:** Ensure the wall surface is clean, flat, and capable of supporting the shower column. Turn off the main water supply.
2. **Mount the Thermostatic Mixer:** Connect the thermostatic mixer to the hot and cold water supply lines according to local plumbing standards. Ensure a watertight seal using appropriate sealant or PTFE tape. Secure the mixer to the wall using the provided fixings.
3. **Install the Shower Column:** Attach the main vertical shower column to the thermostatic mixer. Secure the upper part of the column to the wall using the wall mount bracket and fixings. Ensure the column is vertical and stable.
4. **Attach Shower Heads:** Connect the rain shower head to the upper arm of the column. Connect the shower hose to the handheld shower head and then to the designated outlet on the thermostatic mixer.
5. **Test for Leaks:** Slowly turn on the main water supply and check all connections for any leaks. Address any leaks immediately.

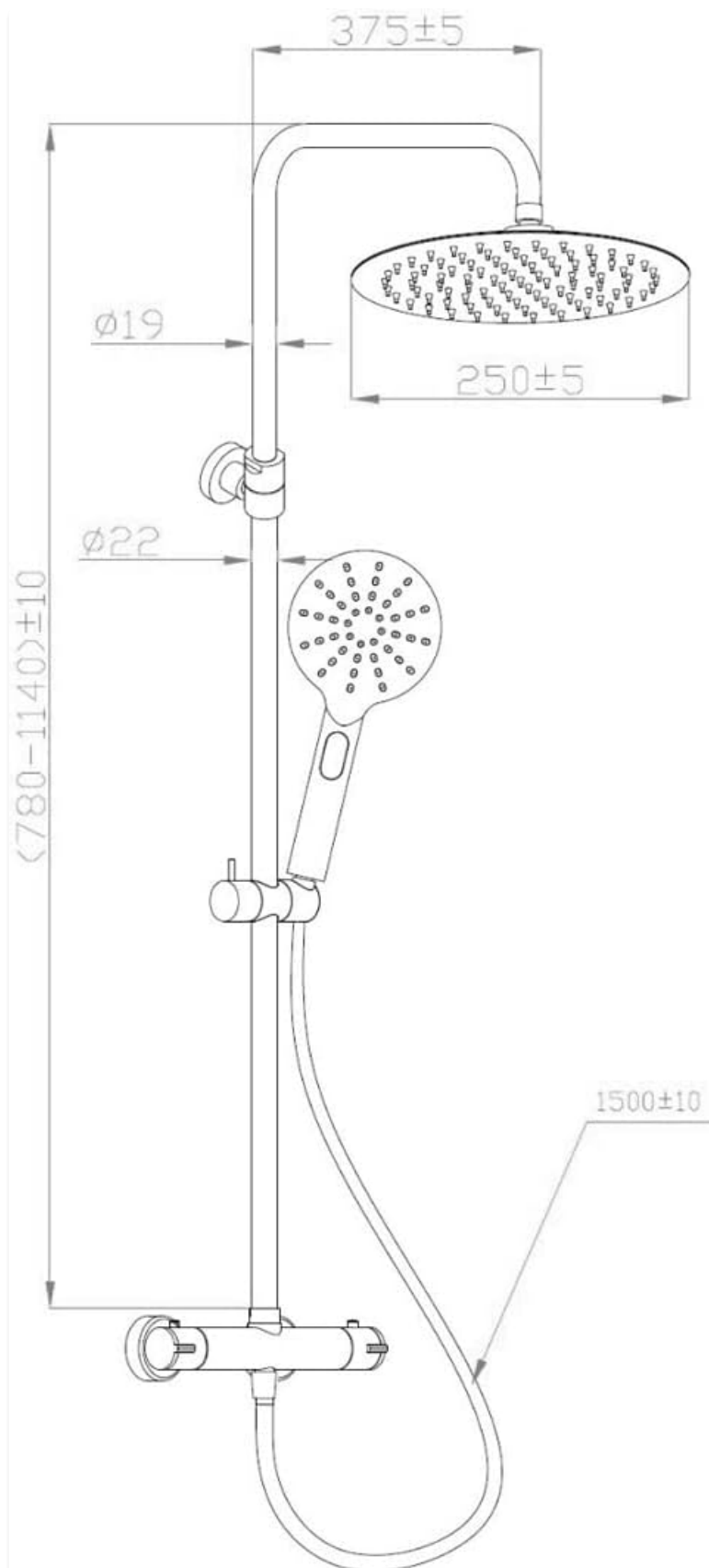


Image 4.1: Technical drawing showing dimensions for installation. Note the adjustable height range of 780-1140mm for the main column.

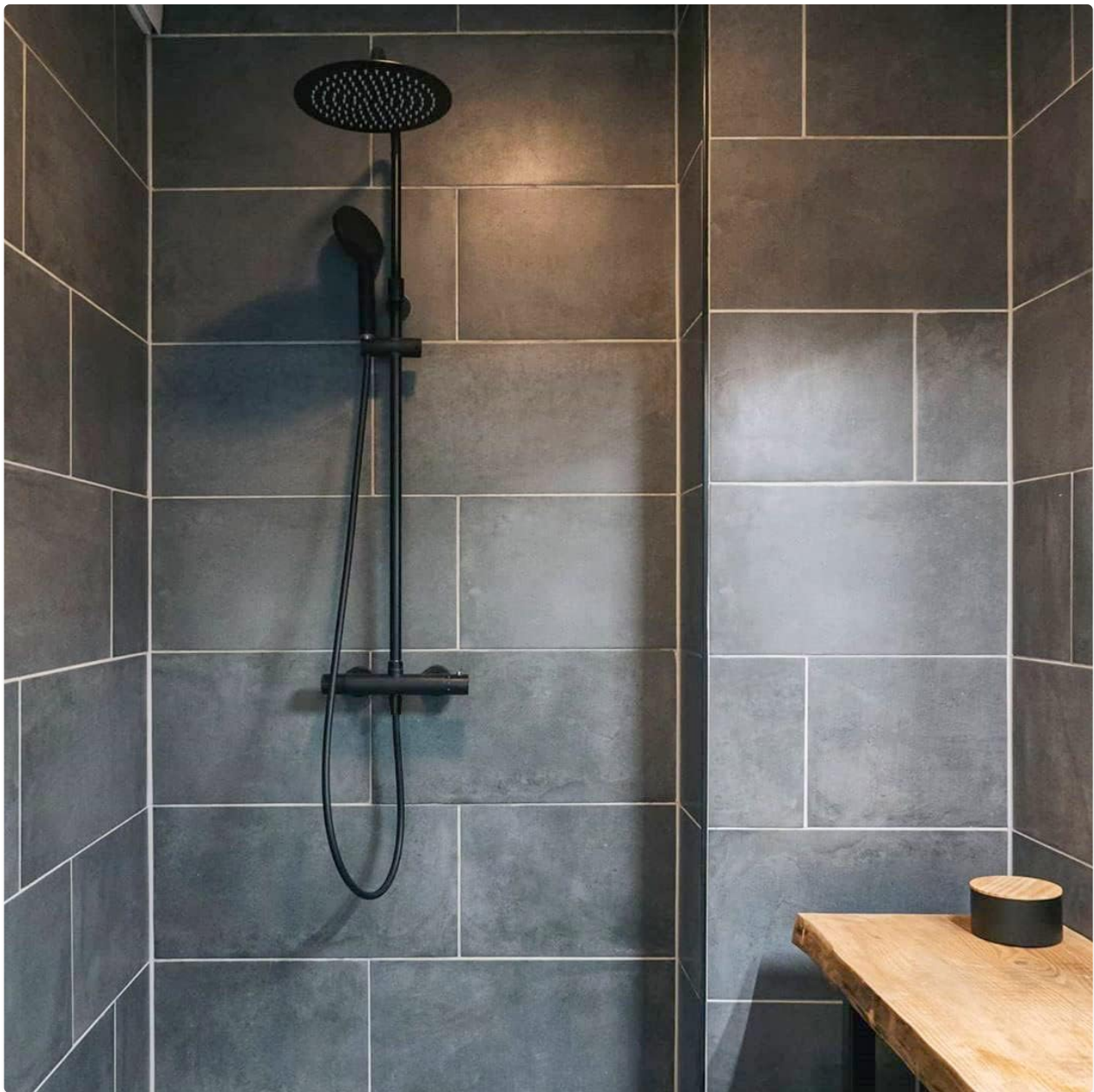


Image 4.2: Example of the shower column installed in a tiled shower area.

5. OPERATING INSTRUCTIONS

The ESSEBAGNO Kissy shower column features a thermostatic mixer for precise temperature control and a diverter to switch between the rain shower and handheld shower.

- **Temperature Control:** Use the temperature knob on the thermostatic mixer to set your desired water temperature. The mixer will automatically maintain this temperature, compensating for fluctuations in hot and cold water pressure. A safety stop is typically set at 38°C (100°F) to prevent accidental scalding. Press the override button to exceed this temperature.
- **Water Flow Control:** Use the flow control knob to turn the water on/off and adjust the water volume.
- **Diverter Function:** The diverter knob or lever allows you to switch the water flow between the overhead rain shower and the handheld shower head.



Image 5.1: Detail of the thermostatic mixer with temperature and flow controls.



Image 5.2: The overhead rain shower head provides a wide, even spray.

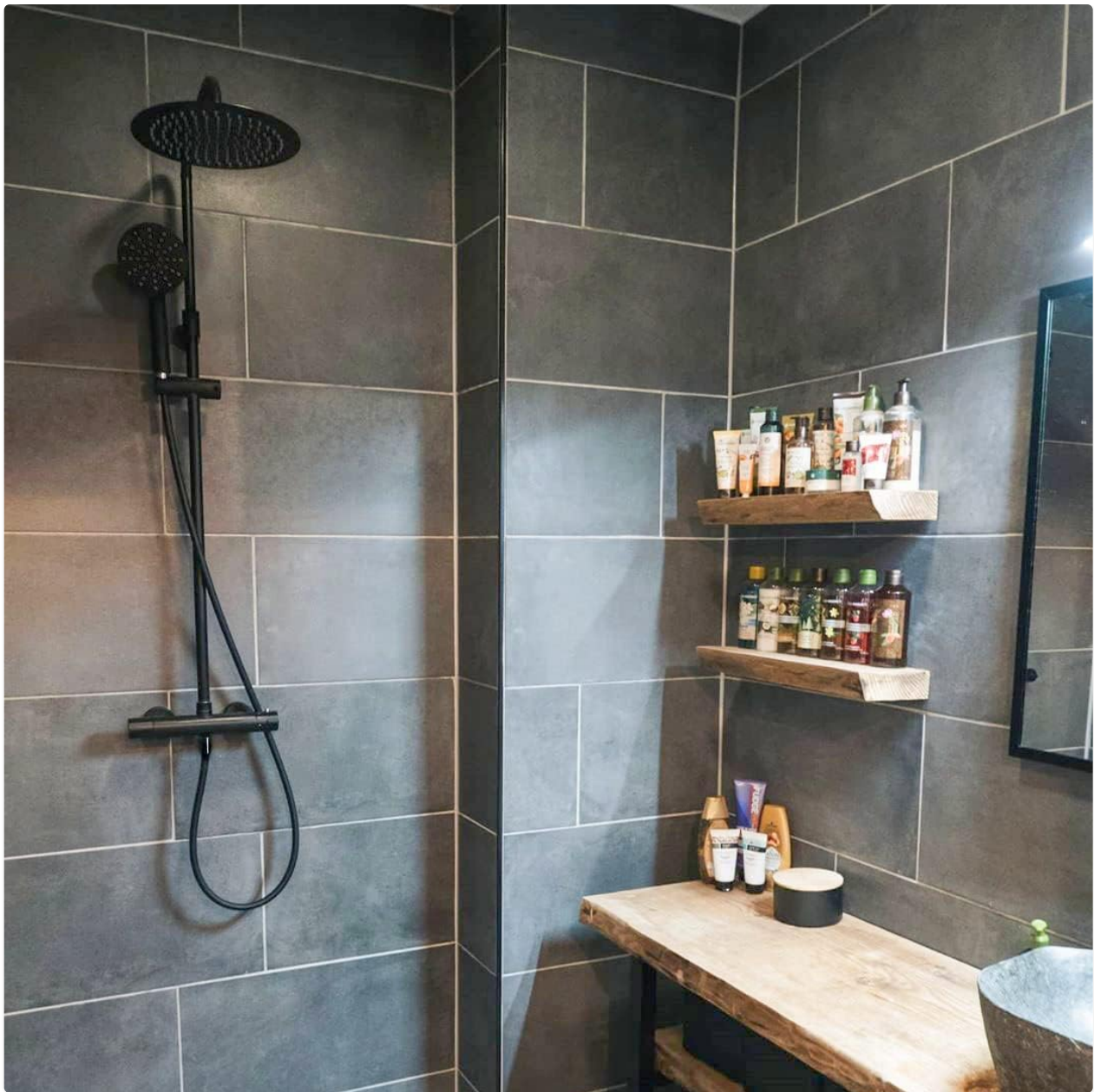


Image 5.3: The adjustable handheld shower head for targeted rinsing.

6. MAINTENANCE

Regular cleaning and maintenance will prolong the life and appearance of your shower column.

- **Cleaning the Finish:** Clean the black finish with a soft cloth and mild soap and water. Rinse thoroughly and dry with a soft cloth to prevent water spots. Avoid abrasive sponges, scouring pads, or chemical cleaners containing ammonia, bleach, or alcohol.
- **Cleaning Shower Heads:** Periodically clean the nozzles of both shower heads to remove limescale buildup. Many shower heads feature flexible silicone nozzles that can be rubbed to dislodge mineral deposits. For stubborn buildup, soak the shower head in a solution of white vinegar and water.
- **Thermostatic Cartridge:** If you experience issues with temperature control, the thermostatic cartridge may need cleaning or replacement. This should be done by a qualified plumber.

7. TROUBLESHOOTING

Refer to the table below for common issues and their potential solutions:

Problem	Possible Cause	Solution
No water flow or low pressure	Water supply off, clogged shower heads, kinked hose	Check water supply, clean shower head nozzles, straighten hose
Water temperature too hot/cold or fluctuating	Thermostatic cartridge issue, incorrect installation of hot/cold lines	Consult a qualified plumber to inspect/replace cartridge or check connections
Leaks from connections	Loose connections, worn seals/washers	Tighten connections, replace seals/washers as needed
Diverter not switching properly	Diverter mechanism obstructed or faulty	Inspect for obstructions, if issue persists, contact support or a plumber

If you encounter problems not listed here or if the suggested solutions do not resolve the issue, please contact ESSEBAGNO customer support or a qualified plumber.

8. SPECIFICATIONS

Feature	Detail
Brand	ESSEBAGNO
Model Number	9015981
Product Code	10008130
Dimensions (Product)	2.2 x 37.5 x 114 cm (approximate)
Weight (Item)	4.78 kg
Finish	Painted (Black)
Material	Brass
Number of Handles	1 (for flow/temperature control)
Handle Material	Metal
Mounting Type	Wall Mount




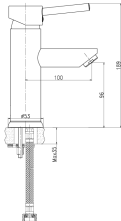


9. WARRANTY AND SUPPORT

ESSEBAGNO products are manufactured to high-quality standards. For specific warranty details, please refer to the warranty card included with your purchase or visit the official ESSEBAGNO website. For technical support, spare parts, or service inquiries, please contact your retailer or ESSEBAGNO customer service directly.

Please have your model number (9015981) and purchase date available when contacting support.

© 2025 ESSEBAGNO. All rights reserved.

Related Documents - 9015981

	<p>EssEBagno ESSEGUN THERMO Shower System Installation Guide</p> <p>Detailed installation guide for the EssEBagno ESSEGUN THERMO thermostatic shower system, including component identification and mounting instructions.</p>
	<p>EssEBagno Shower Panel Installation Guide - Model H353</p> <p>Comprehensive installation guide for the EssEBagno H353 shower panel. Learn how to mount, connect, and use your new bathroom fixture with clear instructions and component lists.</p>
	<p>Colonne de Douche Thermostatique NEW ONEO COL THERMO NOIRE - EsseBagno</p> <p>Découvrez la colonne de douche thermostatique NEW ONEO COL THERMO NOIRE d'EsseBagno (Code 3661109013710). Caractéristiques : tube extensible, pommeau 25cm inox, douchette 3 jets, mitigeur thermostatique avec sécurité 38°C. Idéal pour votre salle de bain.</p>
	<p>EsseBagno Deco Gun Metal Washbasin Mixer Tap Technical Specifications</p> <p>Technical specifications and dimensions for the EsseBagno Deco Gun Metal washbasin mixer tap, featuring key measurements like base diameter, spout reach, and overall height.</p>
	<p>EssEBagno ESSEGUN THERMO Shower System Installation Guide</p> <p>Detailed installation guide for the EssEBagno ESSEGUN THERMO thermostatic shower system, including component identification and mounting instructions.</p>
	<p>EssEBagno Shower Panel Installation Guide - Model H353</p> <p>Comprehensive installation guide for the EssEBagno H353 shower panel. Learn how to mount, connect, and use your new bathroom fixture with clear instructions and component lists.</p>