

## Aubric Smart LED WiFi Controller

# Aubric Smart LED WiFi Controller Instruction Manual

Model: Smart LED WiFi Controller (B08SWK8H25)

Brand: Aubric

## INTRODUCTION

---

This manual provides detailed instructions for the installation, operation, and maintenance of your Aubric Smart LED WiFi Controller. This device allows you to control RGB/BGR/GRB LED strip lights wirelessly via a smartphone app, RF remote control, or voice commands through smart assistants like Alexa and Google Assistant.

## SAFETY INFORMATION

---

- Ensure all connections are secure before applying power to prevent damage.
- Use only with compatible 12-24V DC power adapters (not included).
- Do not expose the controller to moisture or extreme temperatures.
- This device is designed for indoor use only.

## PACKAGE CONTENTS

---

The package includes the following items:

- 2 LED Wifi Controllers
- 2 RF Remote Controls
- 2 4-Pin Connectors

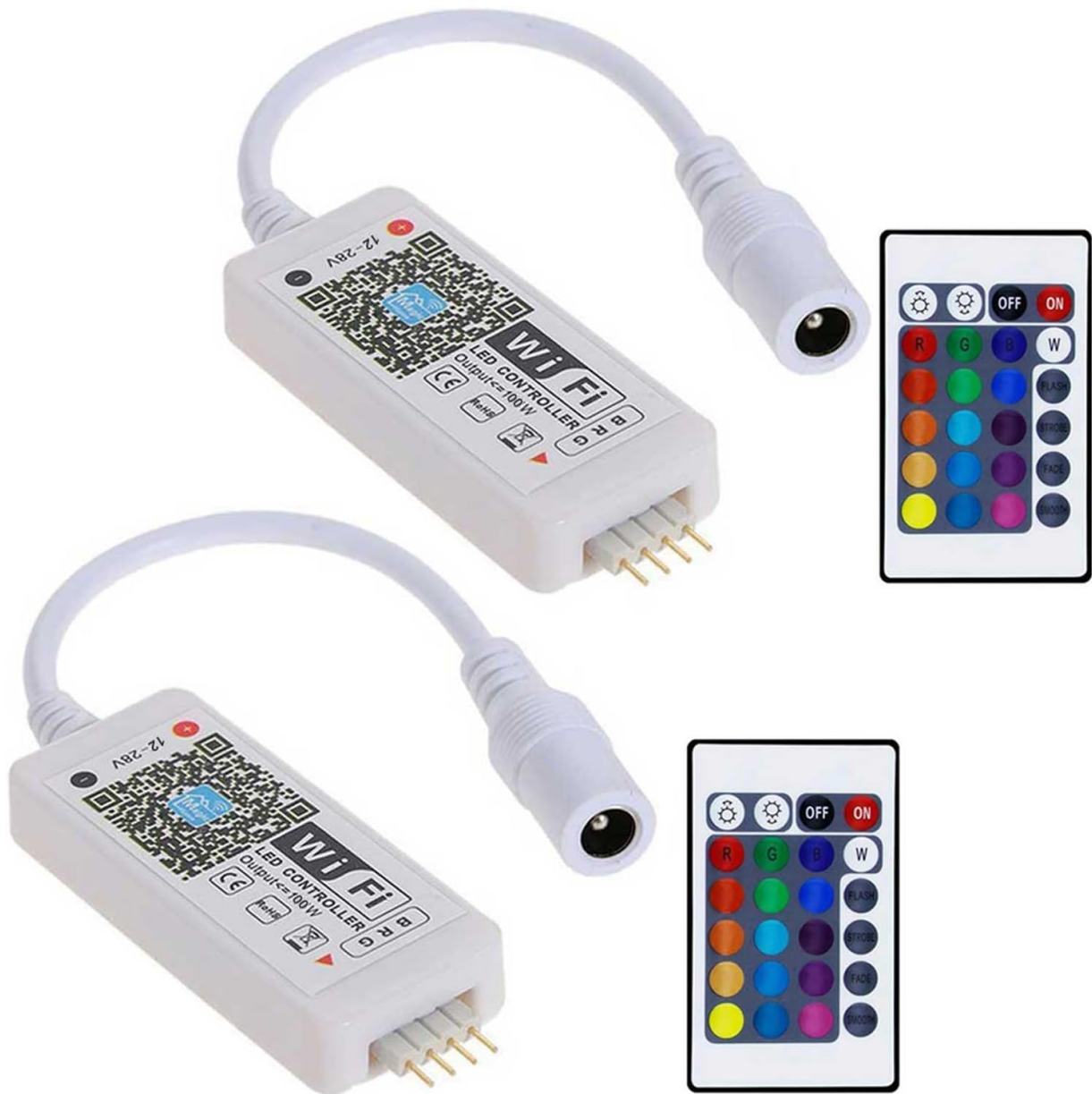


Image: Two Aubric Smart LED WiFi Controllers shown with their respective RF remote controls. Each controller is white, rectangular, with a QR code and "WiFi" label, and features a 4-pin output and a DC power input cable.

## PRODUCT OVERVIEW

---

The Aubric Smart LED WiFi Controller allows for versatile control of your LED strip lights. It features a compact design and supports both Wi-Fi and RF remote control.

### Controller Features:

- Wi-Fi connectivity for smartphone app control.
- Compatibility with RGB, BGR, and GRB LED strip lights.
- Input Voltage: 12-24V DC.
- Maximum Output: 100W.

### RF Remote Control:

The included 24-key RF remote offers 360° wireless control without needing to target the sensor, providing a range of up to 20 meters.

# RF VS IR

## OUR UPDATED VERSION

RF REMOTE: 360° wireless control, no need to target the sensor



Remote Range: 20 Meters

## OTHERS

IR REMOTE: only works when you target the sensor



Remote Range: 3 Meters

Image: A single Aubric Smart LED WiFi Controller connected to a DC power plug, alongside its 24-key RF remote control. The remote has buttons for power, color selection (R, G, B, W), brightness, and various modes like Flash, Strobe, Fade, and Smooth.



Image: A comparison illustrating the difference between RF and IR remote controls. The RF remote (our updated version) shows 360° wireless control with a 20-meter range, while the IR remote (others) requires targeting the sensor with a 3-meter range.

## 1. Physical Connection

Follow these steps to connect your LED strip lights to the controller and power supply:

1. **Connect the LED Strip:** Ensure the 4-pin connector from your LED strip aligns with the 4-pin output on the WiFi controller. Pay attention to the arrow indicators on both the connector and the controller to ensure correct polarity. Incorrect connection may damage the LED strip.
2. **Connect the Power Supply:** Connect a compatible 12-24V DC power adapter (not included) to the DC input jack of the WiFi controller. Ensure the power adapter is suitable for the wattage of your LED strip.
3. **Power On:** Once all connections are secure, plug the power adapter into a wall outlet.



Image: A diagram showing the physical connections. It illustrates connecting a 12V DC plug to the WiFi controller, which then connects to a 4-pin connector for the LED strip. A warning states to connect all parts before plugging in the power



supply to avoid burnout.

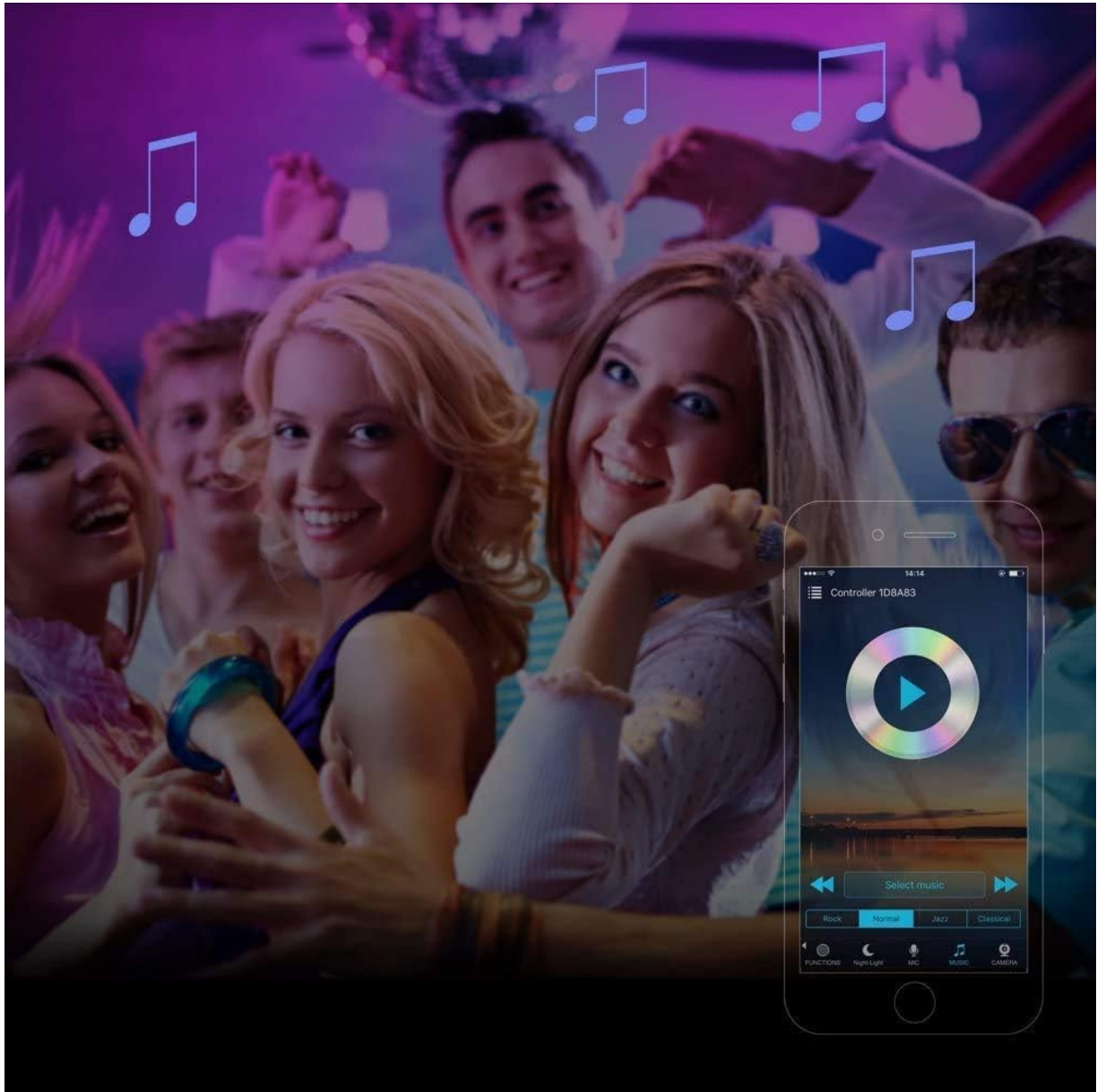


Image: Close-up view demonstrating the correct connection of the LED strip to the WiFi controller. It highlights the importance of aligning the arrow on the LED strip connector with the arrow on the controller for proper polarity.

## 2. App Download and Installation

To control your LED lights via smartphone, download the "Magic Home Pro" app:

- Scan the QR code on the controller or visit the official download page:
- <http://app.magichue.net/download/mgchomepro/AppDown.aspx>
- Alternatively, search for "Magic Home Pro" in the Apple App Store or Google Play Store.

# Smart Voice Control

Use Simple Voice Commands To Control Strip Lights

*Alexa, change the strip light to green*

*Okay*



Works with  
Amazon Alexa



Works with  
Google Assistant

Image: A four-step visual guide for app setup. Step 1 shows downloading "Magic Home Pro". Step 2 shows opening the app and adding devices. Step 3 instructs to connect to the controller's Wi-Fi network (e.g., "LEDnetXXXXXX") in phone settings. Step 4 shows opening the app again to control the lights.

### 3. Connecting to Wi-Fi Network

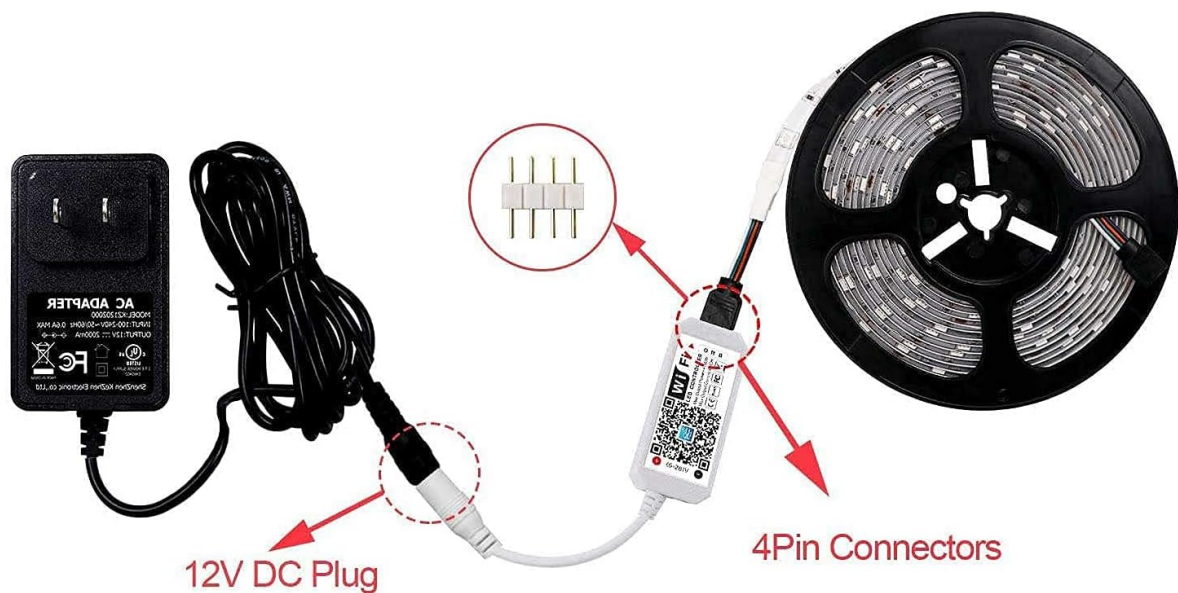
1. Ensure your LED controller is powered on.
2. Open the "Magic Home Pro" app.
3. In the app, select "Add Device" or follow the on-screen prompts to find new devices.
4. Go to your phone's Wi-Fi settings and connect to the controller's Wi-Fi network, which typically starts with "LEDnet" followed by numbers/letters (e.g., "LEDnetXXXXXX").
5. Return to the "Magic Home Pro" app. The app should now detect the controller and guide you through connecting it to your home Wi-Fi network (2.4GHz only).

## OPERATING INSTRUCTIONS

## 1. Using the Magic Home Pro App

The Magic Home Pro app provides comprehensive control over your LED strip lights:

- **Color Control:** Select from 16 million colors, adjust brightness, and set custom color patterns.
- **Music Sync:** The lights can synchronize with music played on your phone, creating dynamic lighting effects.
- **Timer Mode:** Schedule lights to turn on/off at specific times, useful for waking up or setting ambient moods.
- **Group Control:** Control multiple LED strips simultaneously by grouping them within the app.
- **Remote Access:** Control your lights from anywhere via the app once connected to your home Wi-Fi network.



1

Download "Magic Home Pro" APP



2

Open the App and add devices to the Wifi network



3

Open the phone settings, connect wifi: "LEDNetXXXXXX"



4

Open the "Magic Home pro" app, connect the corresponding device

Image: A smartphone displaying the Magic Home app interface, showing a color wheel for light control. The image is set against a backdrop of a modern house with various rooms illuminated by LED strip lights, illustrating remote control capabilities.





Image: A group of people enjoying a party atmosphere with LED lights. A smartphone screen in the foreground shows the Magic Home app's music sync interface, indicating lights can beat with music.

## 2. Using the RF Remote Control

The 24-key RF remote control provides direct access to basic functions:

- **Power On/Off:** Use the "ON" and "OFF" buttons.
- **Color Selection:** Directly select Red, Green, Blue, or White, and other preset colors.
- **Brightness Adjustment:** Increase or decrease light intensity.
- **Mode Selection:** Choose from various dynamic modes like Flash, Strobe, Fade, and Smooth.

## 3. Voice Control (Alexa & Google Assistant)

Integrate your controller with Amazon Alexa or Google Assistant for hands-free control:

1. Ensure your controller is connected to your home Wi-Fi network via the Magic Home Pro app.
2. Open the Alexa or Google Home app.
3. Enable the "Magic Home" skill/service and link your Magic Home account.
4. Discover devices. You can now use voice commands such as: *"Alexa, change the strip light to green"* or *"Hey Google, turn off the living room lights"*.





Image: A living room scene with LED strip lights illuminating a TV. An Amazon Echo Dot is visible. Text overlays demonstrate voice commands: "Alexa, change the strip light to green" and the response "Okay", indicating compatibility with Amazon Alexa and Google Assistant.

## 4. Working Modes

The controller supports two primary working modes:

- **Hotspot Mode:** For outdoor use or in locations without a Wi-Fi network (e.g., car, boat). Connect your phone directly to the controller's Wi-Fi hotspot.
- **Wi-Fi Network Mode:** Connects the controller to your home Wi-Fi router for remote control via the app from anywhere.

## MAINTENANCE

To ensure optimal performance and longevity of your Aubric Smart LED WiFi Controller:

- Keep the device clean and free from dust. Use a soft, dry cloth for cleaning.
- Avoid placing the controller in areas with high humidity or direct exposure to water.
- Store in a cool, dry place when not in use for extended periods.

## TROUBLESHOOTING

---

### Controller not connecting to Wi-Fi:

Ensure your home Wi-Fi network is 2.4GHz. The controller does not support 5GHz networks. Try rebooting your router and phone. Ensure your phone's VPN is off during initial setup. A strong Wi-Fi signal is recommended.

### LED strip not lighting up:

Check all physical connections, especially the 4-pin connector's polarity (align arrows). Verify the power adapter is working and provides the correct voltage (12-24V DC).

### RF Remote not responding:

Ensure the remote has a working battery. The RF remote does not require line of sight, but extreme distances or heavy obstructions may affect performance. If controlling multiple units, ensure remotes are correctly paired to individual controllers if desired (refer to specific pairing instructions if available, not detailed in current data).

### App control issues:

Verify your phone is connected to the same Wi-Fi network as the controller (in Wi-Fi Network Mode). Ensure the Magic Home Pro app is updated to the latest version.

## SPECIFICATIONS

---

Feature	Detail
Brand	Aubric
Model	Smart LED WiFi Controller (B08SWK8H25)
Input Voltage	12-24 Volts (DC)
Max Output Wattage	100 Watts
Control Method	App, Remote Control, Voice Control (IFTTT, Alexa, Google Assistant)
Connectivity	Wi-Fi (2.4GHz), RF
Indoor/Outdoor Usage	Indoor
Material	Plastic
Item Weight	2.39 ounces
Package Dimensions	7.6 x 4.57 x 0.67 inches

## WARRANTY AND SUPPORT

---

For warranty information and technical support, please refer to the product packaging or contact Aubric customer service directly. Keep your purchase receipt for warranty claims.

### Related Documents - Smart LED WiFi Controller

