

EASEHOLD AJ10B

EASEHOLD Centrifugal Juicer Machine 1000W (Model AJ10B) Instruction Manual

1. INTRODUCTION

This manual provides essential information for the safe and efficient operation of your EASEHOLD Centrifugal Juicer Machine. Please read all instructions carefully before first use and retain this manual for future reference.

The EASEHOLD Juicer is designed to extract juice from various fruits and vegetables, retaining essential vitamins and minerals. It features a powerful 1000W motor and durable stainless-steel components.



Figure 1: EASEHOLD Centrifugal Juicer Machine

2. SAFETY INSTRUCTIONS

Your safety is paramount. This juicer extractor incorporates several safety features:

- The juicer will not operate unless the juicer cover and the locking handle are securely in place (in the vertical position).
- An overload protection system will automatically shut off the juicer if it overheats.
- Ensure the anti-drip discharge spout is pressed down before use to prevent leaks.

Important: This juicer is not suitable for fruits with very low juice content or pulpy fruits such as bananas, durian, or mango, as they may clog the machine.

3. PRODUCT COMPONENTS

Familiarize yourself with the main components of your EASEHOLD juicer:

- **Pusher:** Used to guide fruits and vegetables into the feed chute.
- **Feed Chute:** Wide 75mm opening for inserting produce.
- **Juicer Cover:** Transparent cover that secures the internal components.

- **Locking Handle:** Secures the juicer cover to the main body.
- **Rotating Sieve & Blade:** Stainless steel component for extracting juice.
- **Main Body:** Houses the 1000W motor and control dial.
- **Pulp Container:** Large capacity (1300 ml) container for collecting discarded pulp.
- **Juice Jug:** 1000 ml capacity jug for collecting fresh juice, often with a foam separator.
- **Anti-drip Discharge Spout:** Prevents juice from dripping after extraction.



Figure 2: Key Components of the Juicer

4. SETUP

Follow these steps to assemble your juicer before use:

1. Align the pulp container with the lug at the bottom of the main body.
2. Place the spout housing onto the main body.
3. Slot the rotating sieve onto the drive shaft.
4. Align the lid with the top of the spout housing assembly.
5. Slot the plunger into the funnel in the top of the lid.
6. Lift the locking bar upwards to secure all components.

7. Place the juice cup under the juice spout.

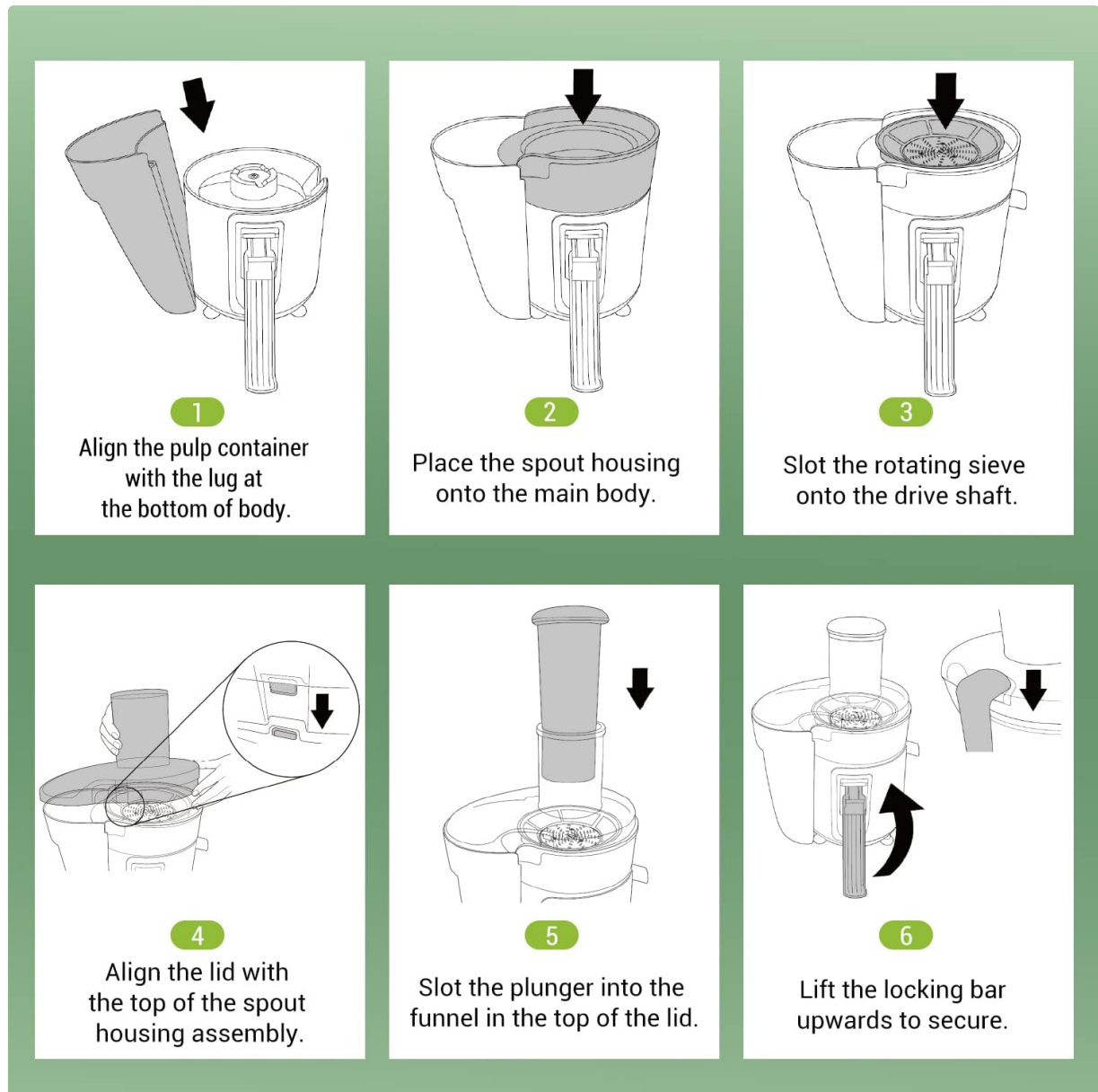


Figure 3: Juicer Assembly Steps

For a visual guide on assembling your juicer, please watch the following video:

Video 1: Easehold Centrifugal Juicers Open Box Review (demonstrates assembly)

5. OPERATING INSTRUCTIONS

Prepare your fruits and vegetables by washing them thoroughly. For fruits with thick or inedible peels (like oranges), peel them before juicing. For fruits with large pits (like peaches or plums), remove the pits. Cut larger produce into pieces that fit comfortably into the 75mm wide feed chute.

The juicer offers two speed options:

- **Speed I (Slow):** Ideal for soft fruits and vegetables such as bananas, oranges, tomatoes, watermelon, kiwi, etc.
- **Speed II (Fast):** Suitable for hard fruits and vegetables like carrots, apples, celery, beets, kale, etc.

Two Speed Modes



Speed I



Low Speed
For Soft Fruit & Vegetables



Speed II



Fast Speed
For Hard Fruit & Vegetables

Figure 4: Two Speed Modes for Different Produce Types

Select the appropriate speed setting on the control dial. With the juicer running, slowly feed the prepared produce into the feed chute using the pusher. Avoid forcing the produce, allowing the juicer to process it at its own pace.

6. CLEANING AND MAINTENANCE

The juicer is designed for easy cleaning. All detachable parts are simple to assemble and disassemble. A cleaning brush is included to assist with cleaning the stainless-steel sieve.

- Always unplug the juicer before cleaning.
- Disassemble the juicer by reversing the setup steps.
- Rinse all detachable parts (juicer cover, pusher, rotating sieve, pulp container, juice jug) under warm water.
- Use the provided cleaning brush to remove any pulp residue from the sieve.
- The main body containing the motor should be wiped clean with a damp cloth. Do not immerse the main body in water.
- All parts are BPA-free and made from food-grade materials.
- **Note:** The juicer parts are NOT dishwasher safe. Hand wash only.

For a visual guide on cleaning your juicer, please watch the following video:

Video 2: Easehold Juicer How to Clean

7. SPECIFICATIONS

- **Brand:** EASEHOLD
- **Model:** AJ10B
- **Maximum Power:** 1000 Watts
- **Number of Speeds:** 2
- **Product Dimensions:** 8.2"D x 10.5"W x 15.6"H
- **Item Weight:** 10.3 pounds
- **Material:** Stainless Steel
- **Special Feature:** BPA Free, Powerful Motor
- **Capacity (Juice Jug):** 1000 Milliliters
- **Capacity (Pulp Container):** 1300 Milliliters
- **Recommended Uses:** Apple, Beetroot, Carrot, Celery, Cucumber, Ginger, Grape, Grapefruit, Kale, Lemon, Orange, Pear, Pomegranate, Pomelo, Watermelon, Wheatgrass



Figure 5: Product Dimensions