

Manuals+

[Q & A](#) | [Deep Search](#) | [Upload](#)

Manuals.plus /

› [Pawhut](#) /

› PawHut D51-214 4-Tier Hamster Cage Instruction Manual

Pawhut D51-214

PawHut D51-214 4-Tier Hamster Cage Instruction Manual

Model: D51-214

1. INTRODUCTION

Thank you for choosing the PawHut D51-214 4-Tier Hamster Cage. This multi-level habitat is designed to provide a stimulating and comfortable environment for hamsters, mice, and other small rodents. Please read this manual thoroughly before assembly and use to ensure proper setup, safe operation, and optimal maintenance of your pet's new home.



Figure 1: Assembled PawHut D51-214 4-Tier Hamster Cage.

2. SAFETY INFORMATION

- Always supervise children when they are interacting with the pet and the cage.
- Ensure all parts are securely fastened during assembly and regularly check for loose components.
- Place the cage on a stable, level surface away from direct sunlight, drafts, and extreme temperatures.
- This cage is designed for small rodents such as hamsters and mice. Ensure the size of your pet is appropriate for the cage and its accessories (e.g., tunnels, wheel).
- Keep small parts and packaging materials away from pets and children to prevent choking hazards.
- Do not modify the cage structure, as this may compromise its safety and stability.

3. PACKAGE CONTENTS

Before beginning assembly, verify that all components are present and undamaged. If any parts are missing or damaged, please contact customer support.

- Main Wire Cage Structure
- Bottom Tray (PVC/Plastic)

- 4 Ladders/Ramps
- Tunnels (various sections and connectors)
- Small House/Shelter
- Exercise Wheel
- Water Bottle
- Food Bowl
- Side Fixing Clips
- Illustrated Assembly Manual



Figure 2: Overview of the PawHut Hamster Cage and its features.

4. SETUP AND ASSEMBLY

Assembly of the PawHut D51-214 cage is designed to be straightforward. Refer to the included illustrated assembly manual for detailed step-by-step instructions. The following provides a general overview:

1. **Unpack Components:** Carefully remove all parts from the packaging and lay them out on a clean, flat surface.
2. **Assemble Base:** Attach the wire cage structure to the bottom PVC/plastic tray using the provided side clips. Ensure the clips are securely fastened to prevent the tray from detaching.
3. **Install Platforms and Ladders:** Position the multi-level platforms within the cage. Connect the ladders to allow your pet to move between levels. Ensure all platforms and ladders are stable.
4. **Connect Tunnels:** Assemble the various tunnel sections and connect them to the designated openings on the cage and platforms. Ensure all tunnel connections are secure to prevent your pet from escaping or getting stuck.
5. **Add Accessories:** Install the exercise wheel, small house, water bottle, and food bowl in their appropriate locations. The water bottle typically attaches to the cage bars from the outside.
6. **Final Check:** Before introducing your pet, double-check all connections, doors, and accessories to ensure they are secure and safe.



Figure 3: Fully assembled PawHut Hamster Cage.

CONCEPTION À 5 NIVEAUX



Niche



Rampes



Roue d'exercice

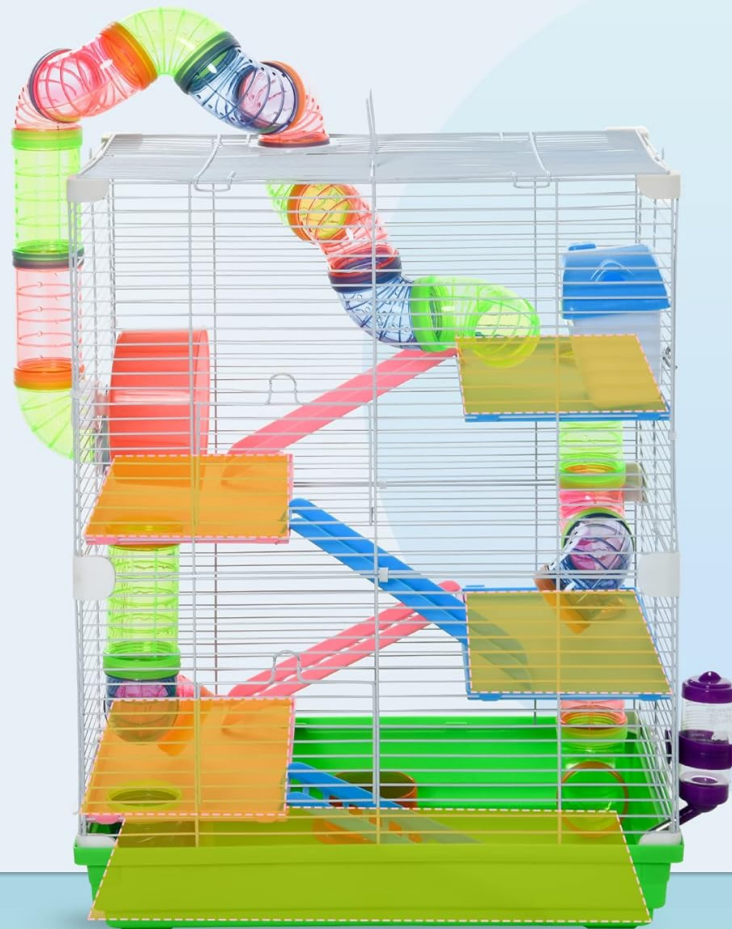


Figure 4: Multi-level design with ramps and tunnels for exploration.

Assembly Video

Your browser does not support the video tag.

Video 1: A brief overview of the PawHut Hamster Cage features and design. This video provides a visual guide to the product's components and overall structure, which can assist during assembly.

5. OPERATING INSTRUCTIONS

Once assembled, the PawHut D51-214 cage offers various features for your pet's activity and comfort:

- **Access Doors:** The cage features two front doors for easy access to your pet and for cleaning. Ensure doors are securely latched after use.
- **Multi-Level Exploration:** Your hamster can navigate between the four tiers using the provided ladders and tunnels, promoting exercise and mental stimulation.
- **Exercise Wheel:** The integrated exercise wheel allows your pet to run and stay active.
- **Water Bottle:** Fill the water bottle with fresh water daily. Ensure the nozzle is accessible and functioning correctly.
- **Food Bowl:** Place your pet's food in the designated food bowl. Replenish as needed.

- **Sleeping House:** The small house provides a secure and private space for your pet to rest and sleep.



CENTRE D'ACTIVITÉS

Les tubes se connectant librement offrent un espace de vie suffisant

Figure 5: The interconnected tunnels serve as an activity center for your pet.

CONCEPTION ADAPTE AUX ANIMAUX DE COMPAGNIE

Résout les problèmes d'alimentation de votre animal



Bouteille d'eau



Gamelle

Figure 6: Close-up of the water bottle and food bowl, designed for pet convenience.



Figure 7: Detailed view of the water bottle, ensuring proper hydration for your pet.

6. MAINTENANCE

Regular cleaning and maintenance are crucial for your pet's health and the longevity of the cage:

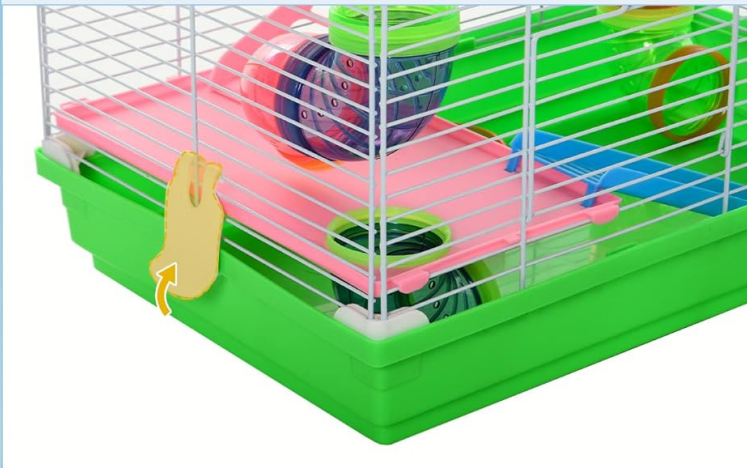
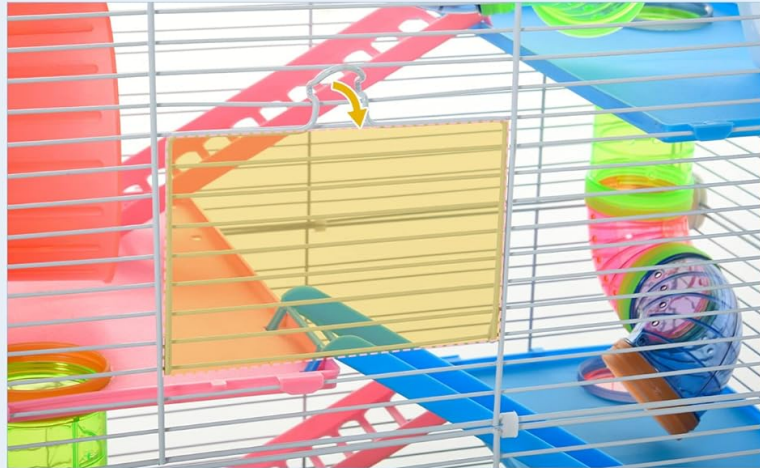
- **Daily Cleaning:** Remove soiled bedding, uneaten fresh food, and replenish water and dry food.
- **Weekly Deep Clean:**
 - a. Remove your pet to a secure temporary enclosure.
 - b. Unclip and remove the bottom tray. Dispose of all bedding.
 - c. Disassemble tunnels, platforms, and accessories.
 - d. Wash all cage parts (wire, tray, tunnels, accessories) with warm water and a pet-safe disinfectant or mild soap. Rinse thoroughly to remove all soap residue.
 - e. Dry all components completely before reassembling.
 - f. Add fresh bedding and return your pet to the clean cage.
- **Check for Wear:** Periodically inspect the cage for any signs of wear, damage, or sharp edges that could harm your pet. Replace damaged parts if necessary.



PLUS DE DÉTAILS



Portes d'entrée
Pour un accès facile



Plateau inférieur amovible
Pour un nettoyage facile

Figure 8: Front doors for easy access and a removable bottom tray for convenient cleaning.

7. TROUBLESHOOTING

- **Difficulty Assembling Platforms/Tunnels:** Ensure you are aligning the connectors correctly. Some parts may require a firm push to snap into place. Refer to the illustrated manual for specific connection points.
- **Noisy Exercise Wheel:** If the exercise wheel is noisy, check for any obstructions or if it's rubbing against the cage bars. A small amount of pet-safe lubricant (e.g., vegetable oil) on the axle might help, but ensure it's safe for your pet.
- **Water Bottle Leaking:** Ensure the water bottle is filled completely, creating a vacuum. Check that the rubber stopper is properly seated and the nozzle is securely tightened.
- **Pet Escaping:** Double-check all doors, tunnel connections, and cage bar spacing. Ensure all clips are securely fastened.
- **Pet Not Using Tunnels/Levels:** Some pets may need time to adjust to new environments. You can encourage exploration by placing treats or small amounts of food in different areas.

8. SPECIFICATIONS

Feature	Detail
---------	--------

Feature	Detail
Model Number	D51-214
Brand	PawHut
Overall Dimensions (L x W x H)	46L x 30W x 58H cm
Material	Steel (cage), PVC/Plastic (tray, accessories)
Number of Tiers	4
Number of Doors	2
Included Components	Water bottle, Nesting house, Removable tray, Ramps, Exercise wheel, Tunnels
Recommended Species	Hamster, Small Rodents
Color	Green (tray), Multi-color (accessories)

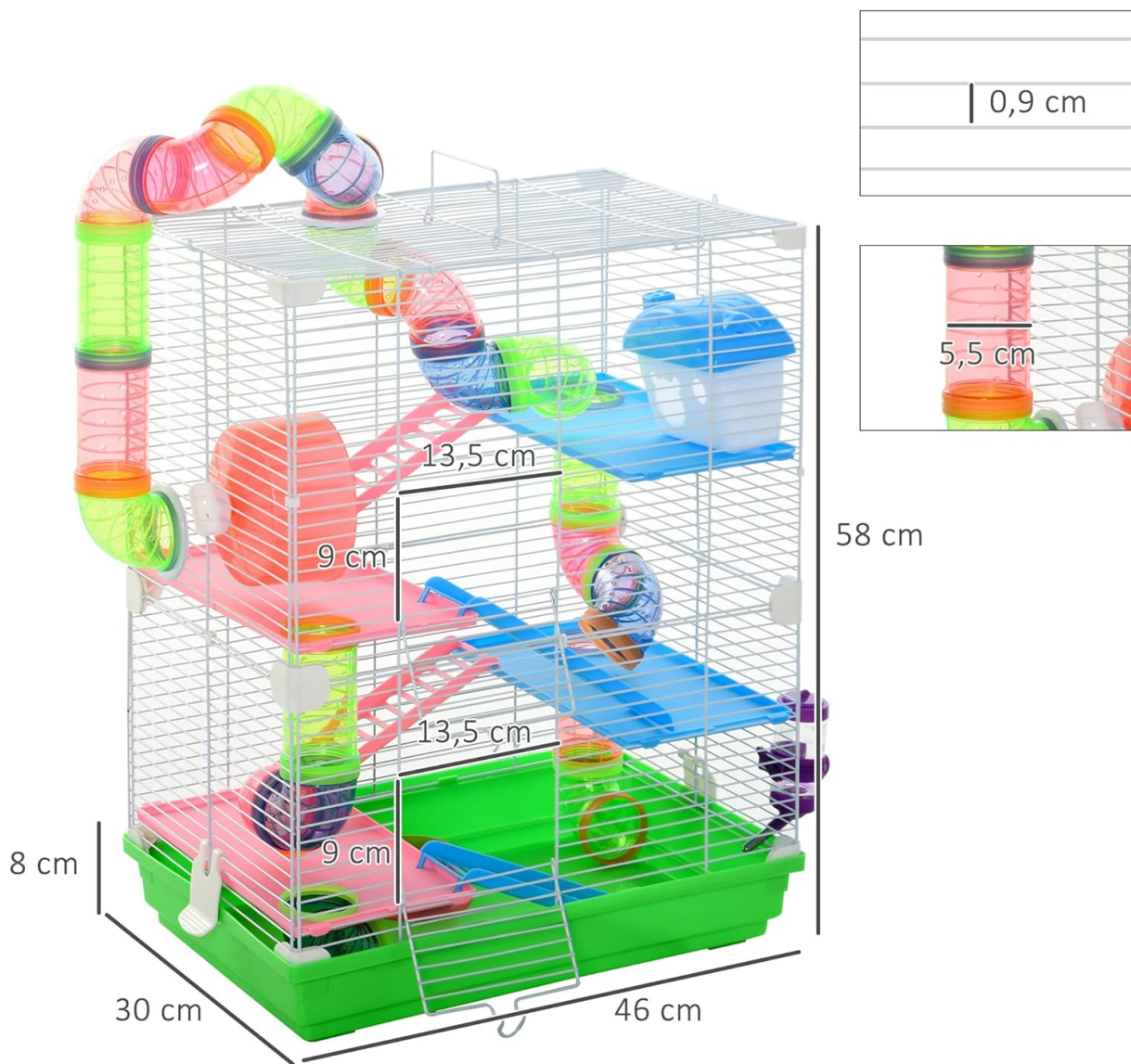


Figure 9: Detailed dimensions of the PawHut Hamster Cage.



Figure 10: Corner protector detail, enhancing safety and cage stability.

9. WARRANTY AND SUPPORT

For warranty information, product support, or to order replacement parts, please refer to the contact details provided with your purchase or visit the official PawHut website. Keep your purchase receipt as proof of purchase.