

CJ TECH T16S

CHJ_Tech T16S Full HD 1080P Webcam User Manual

Model: T16S | Brand: CJ TECH

INTRODUCTION

This manual provides detailed instructions for the setup, operation, maintenance, and troubleshooting of your CHJ_Tech T16S Full HD 1080P Webcam. Please read this manual thoroughly before using the product to ensure optimal performance and longevity.



Image: The CHJ_Tech T16S Full HD 1080P Webcam, featuring a sleek black design with a silver lens ring and an integrated privacy cover, mounted on its adjustable stand.

1. SETUP AND INSTALLATION

The CHJ_Tech T16S Webcam is designed for easy plug-and-play installation, requiring no additional drivers or software for most operating systems.

1.1 Connecting the Webcam

1. **Unpack the Webcam:** Carefully remove the webcam from its packaging.
2. **Position the Webcam:** Place the webcam on top of your monitor, laptop screen, or a flat surface. The adjustable clip allows for secure mounting.
3. **Connect to USB Port:** Plug the USB 2.0 cable from the webcam into an available USB port on your computer (PC, Mac, or Laptop). The webcam will light up upon successful connection.



Image: A hand plugging the webcam's USB cable into a laptop, illustrating the simple plug-and-play setup process without the need for drivers.

1.2 System Compatibility

The T16S webcam is widely compatible with various operating systems and communication platforms:

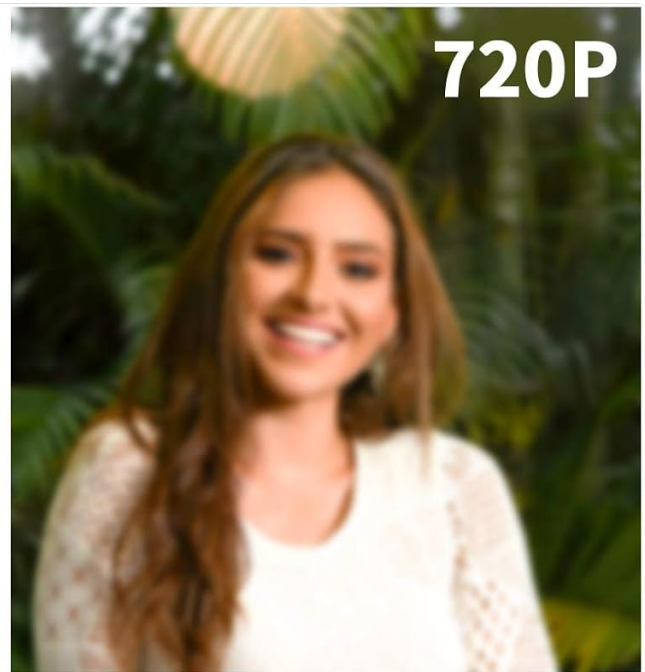
- **Operating Systems:** Windows XP (SP3), Windows 7, Windows 8, Windows 10, macOS, Android, Linux.
- **Supported Platforms:** Skype, Facetime, OBS, XBOX, Hangouts, Facebook, Twitter, YouTube, Twitch, WhatsApp, and more.

2. OPERATING THE WEBCAM

Once connected, your T16S webcam is ready for use with your preferred video conferencing or streaming application.

2.1 Video and Audio Features

- **Full HD 1080P Video:** The webcam captures clear, high-definition video at 1080p resolution and 30 frames per second (FPS), ideal for video calls, conferencing, and live streaming.



FULL HD 1080P VIDEO CALL



Support 30fps 1080P fluent video call

T16S

Image: A comparison showing the superior clarity of 1080P Full HD video compared to 720P, highlighting the webcam's high-resolution capability.

- **Wide-Angle View:** Enjoy a 77-degree wide viewing angle, allowing more participants or a broader background to be included in your video feed.

WIDE

77° VIEWING ANGLE

T16S



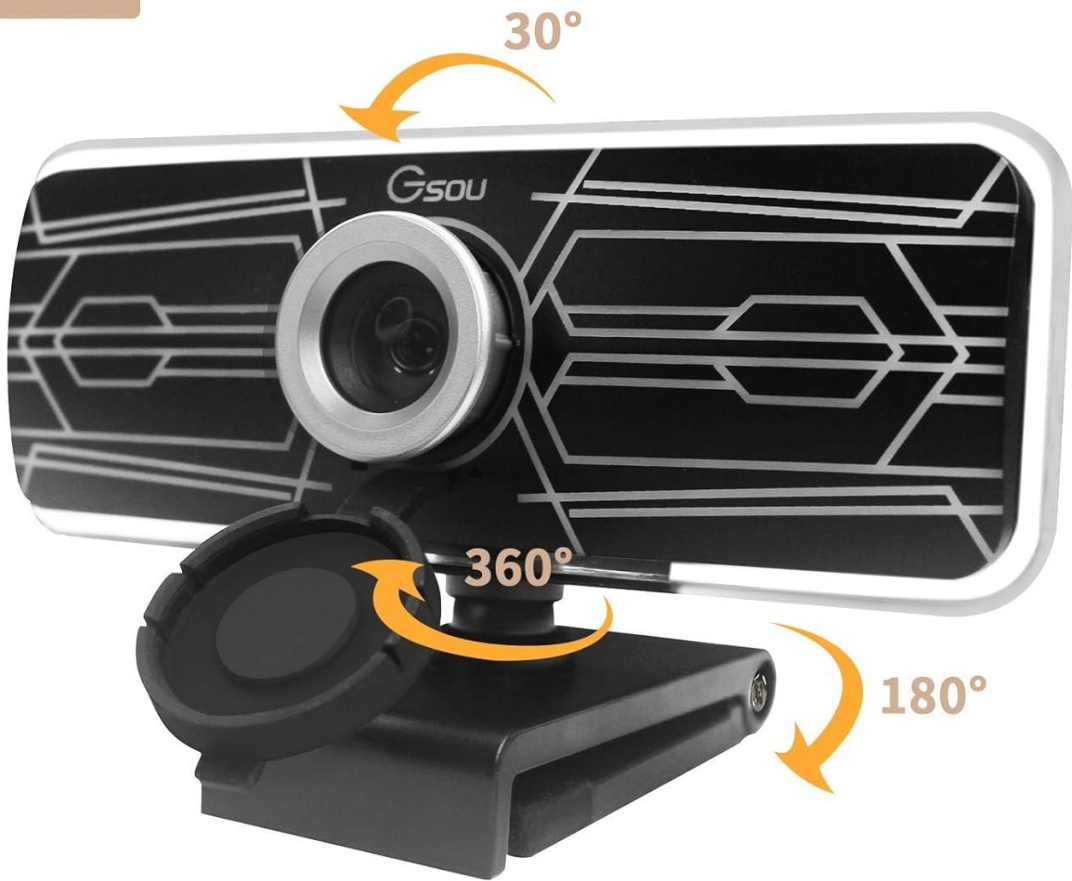
Image: An illustration demonstrating the 77-degree wide viewing angle of the webcam, suitable for group meetings or capturing a wider scene.

- **Built-in Microphone:** The integrated digital microphone features noise reduction and echo-cancellation technology, ensuring clear audio capture within 3 meters, even in noisy environments.
- **Fixed-Focus Lens:** The fixed-focus lens keeps subjects in clear focus without manual adjustment, providing consistent image clarity.

2.2 Adjustable Design

- **360° Rotation:** The webcam features a 360-degree horizontal rotation, allowing you to easily adjust the camera's direction without moving your device.
- **Vertical Adjustment:** The flexible shaft allows for 30-degree up and down vertical adjustment, helping you find the perfect angle.

T16S



360° **DEGREE ANGLE**
OF VIEW FREE ADJUSTMENT

Image: Diagrams illustrating the webcam's 360-degree horizontal rotation and 30-degree vertical tilt capabilities for flexible positioning.

2.3 Privacy Protection

The webcam includes a fully anti-peeping cover to protect your privacy and security when the camera is not in use. Simply slide the cover over the lens to block the view.

**BUILT-IN NOISE
REDUCTION MICROPHONE,**
ENHANCE THE SOUND QUALITY OF
YOUR VIDEO.



T16S



**PERFECTLY PRIVACY
PROTECTION**



Unauthorized Viewing



Hacker Access



Open



Close

Image: A visual representation of the built-in noise reduction microphone and the privacy cover, showing both open and closed states for enhanced security.

2.4 Usage Scenarios

The T16S webcam is versatile and suitable for a variety of applications:

- **Online Learning & Teaching:** Facilitate clear communication for virtual classrooms.
- **Video Calling & Conferencing:** Conduct professional meetings or personal calls with high-quality video and audio.
- **Live Streaming:** Provide crisp video for your streaming content.
- **Gaming:** Enhance your gaming experience with clear video communication.

ONLINE TEACHING



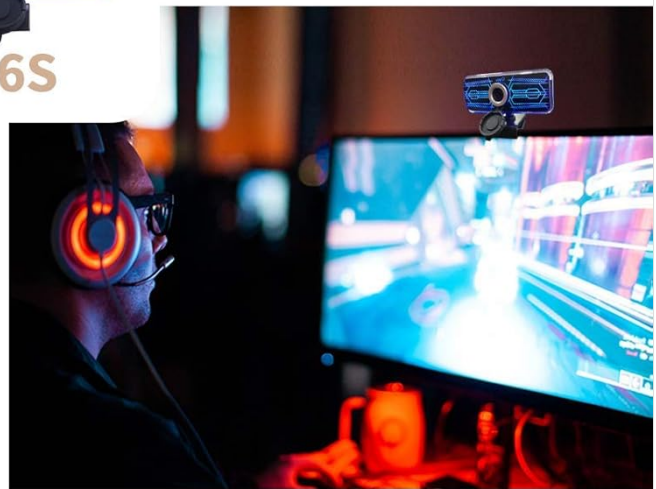
VIDEO CONFERENCING



T16S



VIDEO CALL



GAME STREAMING

Image: A collage of images demonstrating various uses for the T16S webcam, including online teaching, video conferencing, personal video calls, and game streaming.

3. MAINTENANCE AND CARE

Proper care will ensure the longevity and optimal performance of your webcam.

- **Cleaning the Lens:** Use a soft, lint-free cloth specifically designed for optics to gently wipe the lens. Avoid abrasive materials or harsh chemicals.
- **Cleaning the Body:** Wipe the webcam body with a soft, damp cloth. Do not use liquid cleaners directly on the device.
- **Storage:** When not in use, store the webcam in a cool, dry place, away from direct sunlight and extreme temperatures.
- **Avoid Drops:** Handle the webcam with care to prevent damage from accidental drops or impacts.

4. TROUBLESHOOTING

If you encounter issues with your webcam, please refer to the following common solutions:

Problem	Possible Cause	Solution
No image/video output.	<ul style="list-style-type: none">Webcam not properly connected.Incorrect webcam selected in software.USB port issue.	<ul style="list-style-type: none">Ensure the USB cable is securely plugged into both the webcam and the computer.Try a different USB port.In your video application (e.g., Skype, Zoom), check settings to ensure the T16S webcam is selected as the video input device.Restart your computer.
No audio from microphone.	<ul style="list-style-type: none">Microphone muted or not selected.Software audio settings.	<ul style="list-style-type: none">Check your computer's sound settings to ensure the webcam's microphone is enabled and not muted.In your video application, verify that the T16S webcam's microphone is selected as the audio input device.Ensure the privacy cover is not obstructing the microphone holes (though primarily for lens).
Image is blurry or dark.	<ul style="list-style-type: none">Insufficient lighting.Lens is dirty.Privacy cover partially closed.	<ul style="list-style-type: none">Ensure adequate lighting in your environment.Gently clean the webcam lens with a soft, lint-free cloth.Ensure the privacy cover is fully open.

5. PRODUCT SPECIFICATIONS

Feature	Detail
Model	T16S
Brand	CJ TECH
Video Capture Resolution	1080p Full HD
Frame Rate	30 FPS
Viewing Angle	77 Degrees Wide-Angle
Microphone	Built-in Digital Microphone with Noise Reduction and Echo-Cancellation

Feature	Detail
Focus Type	Fixed-Focus
Connectivity	USB 2.0 (Plug & Play)
Rotation	360° Horizontal, 30° Vertical Adjustment
Item Weight	3.2 ounces (approx. 90.7 grams)
Product Dimensions	4.17 x 1.85 x 2.3 inches (approx. 10.6 x 4.7 x 5.8 cm)
Compatibility	Windows XP (SP3), 7, 8, 10; macOS; Android; Linux

6. WARRANTY INFORMATION

Please refer to the product packaging or the retailer's website for specific warranty details. Typically, electronic products come with a limited manufacturer's warranty covering defects in materials and workmanship for a specified period from the date of purchase.

Keep your purchase receipt as proof of purchase for any warranty claims.

7. CUSTOMER SUPPORT

For technical assistance, troubleshooting beyond this manual, or warranty inquiries, please contact CJ TECH customer support through the contact information provided on the product packaging or their official website. When contacting support, please have your product model (T16S) and purchase details ready.