

## Manuals+

[Q & A](#) | [Deep Search](#) | [Upload](#)

Manuals.plus /

- › [SSA](#) /
- › SSA 10.1-inch WiFi Digital Picture Frame (Model ZN-DP1002) User Manual

## SSA ZN-DP1002

# SSA 10.1-inch WiFi Digital Picture Frame User Manual

Model: ZN-DP1002

## 1. PRODUCT OVERVIEW

The SSA 10.1-inch WiFi Digital Picture Frame allows you to display photos and videos shared via a dedicated application or email. It features a high-resolution IPS touchscreen and supports various multimedia functions.



Figure 1: SSA 10.1-inch WiFi Digital Picture Frame.

## 2. SETUP INSTRUCTIONS

## 2.1 Unboxing and Initial Power-On

1. Carefully remove the digital picture frame and all accessories from the packaging.
2. Connect the power adapter to the frame and plug it into a power outlet. The frame will automatically power on.

## 2.2 Physical Placement and Orientation

The frame includes a detachable stand for tabletop use. It also supports wall mounting for flexible placement.

- **Tabletop Use:** Attach the detachable stand to the back of the frame. The frame can be positioned in either portrait or landscape mode.
- **Wall Mounting:** Utilize the back mounting holes to hang the frame on a wall. The auto-rotate function will adjust the photo orientation accordingly.



Figure 2: Flexible placement options for the digital picture frame.

## 2.3 Network Connection (2.4 GHz WiFi)

The frame requires a 2.4 GHz WiFi connection for photo and video sharing. Follow the on-screen prompts to

connect to your home network during initial setup.

## 2.4 App Download and Pairing

To share photos and videos, download the companion application on your smartphone.

1. Search for the SSA WiFi Frame app on the Google Play Store (for Android) or Apple App Store (for iOS).
2. Install the application on your device.
3. Open the app and follow the instructions to pair it with your digital picture frame using the unique frame code displayed on the frame's screen.
4. You can invite up to 20 friends or family members to share photos and videos by providing them with your frame code.

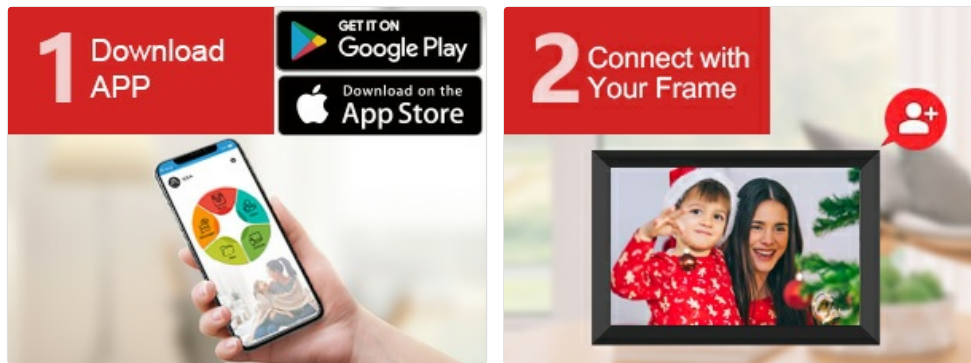


Figure 3: App download and frame connection process.

## 3. OPERATING INSTRUCTIONS

### 3.1 Touchscreen Navigation

The frame features an IPS touchscreen for intuitive operation. Tap and swipe to navigate through menus and settings.



Figure 4: Interacting with the IPS touchscreen.

### 3.2 Photo and Video Display

- **Slideshow Play:** The frame automatically plays a slideshow of uploaded photos and videos.
- **Auto-Rotate:** Photos and videos automatically adjust their orientation (portrait or landscape) based on the frame's position.

- **Custom Settings:** Adjust slideshow transition speed, effects, repeat mode, image zooming, and brightness through the settings menu.
- **Display Captions:** Add captions to your photos via the app for display on the frame.

### 3.3 Multimedia Features

The frame supports various functions beyond photo display:

- **Music Playback:** Import music from a computer or memory card, or insert a USB drive or SD card to play audio files.
- **Calendar:** View the current date and a small slideshow window.
- **Weather:** Displays daily and three-day weather reports based on your location.
- **Alarm:** Set multiple alarms for reminders.
- **Clock:** Choose from several clock display styles.



Figure 5: Overview of frame features.

### 3.4 Sharing Photos and Videos

Content can be shared to the frame using the dedicated app or email.

- **Via App:** Use the SSA WiFi Frame app to select and send photos and videos. The app allows sending up to 50 pictures at once and videos up to 200MB.
- **Via Email:** Send photos and videos directly to the frame's unique email address.
- **External Storage:** Photos and videos can also be imported from a TF card or Type-C USB drive.



Figure 6: Methods for uploading content to the frame.

## 4. MAINTENANCE

### 4.1 Storage Management

The frame has 32GB of built-in memory. Storage can be expanded using a TF card or Type-C USB drive.

- **Internal Storage:** Manage existing photos and videos directly on the device.
- **External Storage:** Insert a TF card or Type-C USB drive to import or export media files.

# Large 32 GB Internal Storage

Support multi user sharing

## Storage can also be extended

By using TF card and Type-C drive



TF Card

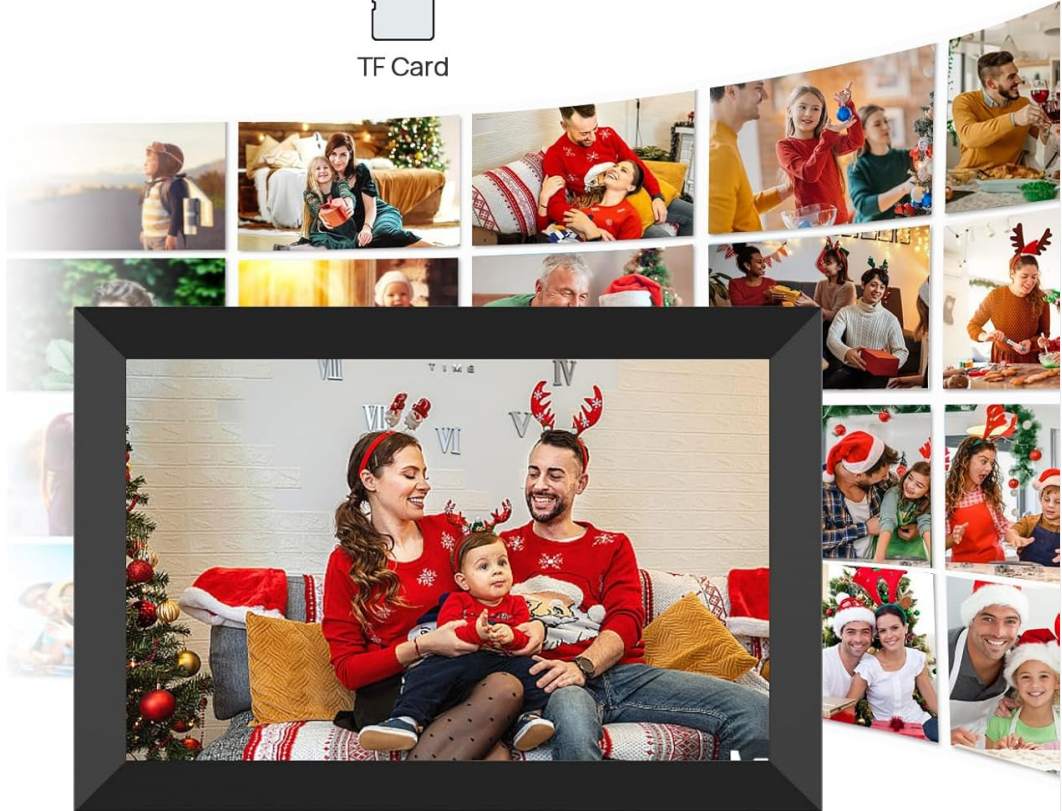
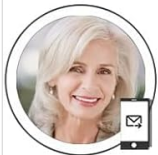


Figure 7: Storage options for the digital picture frame.

## 4.2 Sleep Mode

Activating sleep mode helps conserve energy and extends the lifespan of the device. This can be configured in the settings.



### Sleep Mode

Sleep mode helps conserve energy.  
Activating sleep mode can significantly reduce power consumption.  
This not only saves electricity but also extends the lifespan of the device.



Figure 8: Sleep mode for power conservation.

## 4.3 Resetting the Frame

**Important: Before performing a factory reset, ensure all external devices (TF card, USB drive) are removed from the frame.**

## 5. TROUBLESHOOTING

- **Connectivity Issues:** Ensure the frame is connected to a 2.4 GHz WiFi network. 5 GHz networks are not supported.
- **Frame Code Errors:** If you encounter issues with the frame code, try restarting the frame and the companion app. If the problem persists, contact customer support.
- **Power Issues:** If the frame does not power on or continuously reboots, verify the power adapter is correctly connected and functioning.
- **Content Upload Problems:** Check your internet connection and ensure the app is updated. For large video files, confirm they are under the 200MB limit.
- **Display Malfunctions:** If the screen exhibits unusual behavior, try restarting the device.

Your browser does not support the video tag.

Video 1: Demonstration of the SSA WiFi Digital Picture Frame's features, including app connectivity, menu navigation, and various display modes.

Your browser does not support the video tag.

Video 2: A short video demonstrating the Frameo boot-up sequence, which may indicate a power or software issue if it loops continuously.

## 6. SPECIFICATIONS

Feature	Specification
Screen Size	10.1 Inches
Resolution	1280x800
Aspect Ratio	16:10
Display Type	IPS Touchscreen
Internal Storage	32 GB
External Storage Support	TF Card, Type-C Drive
Connectivity	2.4 GHz WiFi
Product Dimensions	8 x 6 x 0.99 inches
Item Weight	1.48 pounds
Model Number	ZN-DP1002
Manufacturer	SSA

## 178° Wide View Angle

178° IPS screen remains clear in any light, perfectly displayed at any angle.



Figure 9: Wide viewing angle of the IPS display.

## 7. WARRANTY AND SUPPORT

For warranty information or technical assistance, please contact SSA customer support. The manufacturer maintains a team of knowledgeable engineering staff to address product inquiries.

- **Contact Information:** Refer to the product packaging or the official SSA website for the most current support contact details.
- **Online Resources:** Check the SSA website for FAQs, updated manuals, and software downloads.