

## Blink Video Doorbell + Sync Module 2

# Blink Video Doorbell + Sync Module 2 User Manual

Model: Video Doorbell + Sync Module 2

## INTRODUCTION

The Blink Video Doorbell + Sync Module 2 system provides comprehensive home security and convenience, allowing you to monitor your front door from anywhere. This manual will guide you through the setup, operation, maintenance, and troubleshooting of your device.

Key features include 1080p HD day and infrared night vision video, two-way audio, customizable notifications, and flexible power options (wireless or wired). The Sync Module 2 enables local storage of video clips, offering an alternative to cloud subscriptions.



Figure 1: Blink Video Doorbell highlighting its main features: 2-year battery life, weather resistance, two-way audio, and chime notifications via the Blink app.

## PACKAGE CONTENTS

Before you begin, ensure all components are present:

- Blink Video Doorbell
- Blink Sync Module 2
- 2 x 1.5V AA Lithium Metal Batteries (non-rechargeable)
- Mounting Kit (including angle mount, screws, and anchors)
- Power adapter for Sync Module 2



Figure 2: The Blink Video Doorbell and its accompanying Sync Module 2.

## SETUP AND INSTALLATION

### 1. App Download and Account Creation

Download the **Blink Home Monitor** app from your device's app store (iOS 12.5+, Android 6.0+, or Fire OS 7+). Create a Blink account or log in if you already have one.

### 2. Sync Module 2 Setup

1. Plug in the Sync Module 2 using the provided power adapter.
2. Open the Blink app and follow the on-screen instructions to add the Sync Module 2 to your account and connect it to your 2.4 GHz Wi-Fi network (802.11b/g/n).

### 3. Video Doorbell Battery Installation

The Blink Video Doorbell is powered by two 1.5V AA lithium metal batteries. These are non-rechargeable. Ensure you use lithium batteries for optimal performance and battery life.

1. Remove the back plate of the doorbell.
2. Insert the two AA lithium batteries, observing polarity.
3. Reattach the back plate.



Installatie in een handomdraai; de krachtige batterijen gaan twee jaar mee

Figure 3: Simple installation of the Blink Video Doorbell onto its mounting bracket.

#### 4. Mounting the Video Doorbell

The doorbell can be installed wirelessly or connected to existing doorbell wiring (16-24 VAC). For wired installations, ensure compliance with local electrical codes; professional installation may be required.

- **Wireless Installation:** Use the provided mounting kit (screws and anchors) to secure the doorbell to your desired location. Ensure good Wi-Fi signal strength at the installation point.
- **Wired Installation:** Connect the doorbell to your existing doorbell wiring. This allows your existing chime to sound and can extend battery life by using external power. The batteries are still required even with wired power.

Once mounted, add the Video Doorbell to your Blink system via the app, following the guided setup process.

### OPERATING YOUR BLINK VIDEO DOORBELL

#### Answering Doorbell Calls

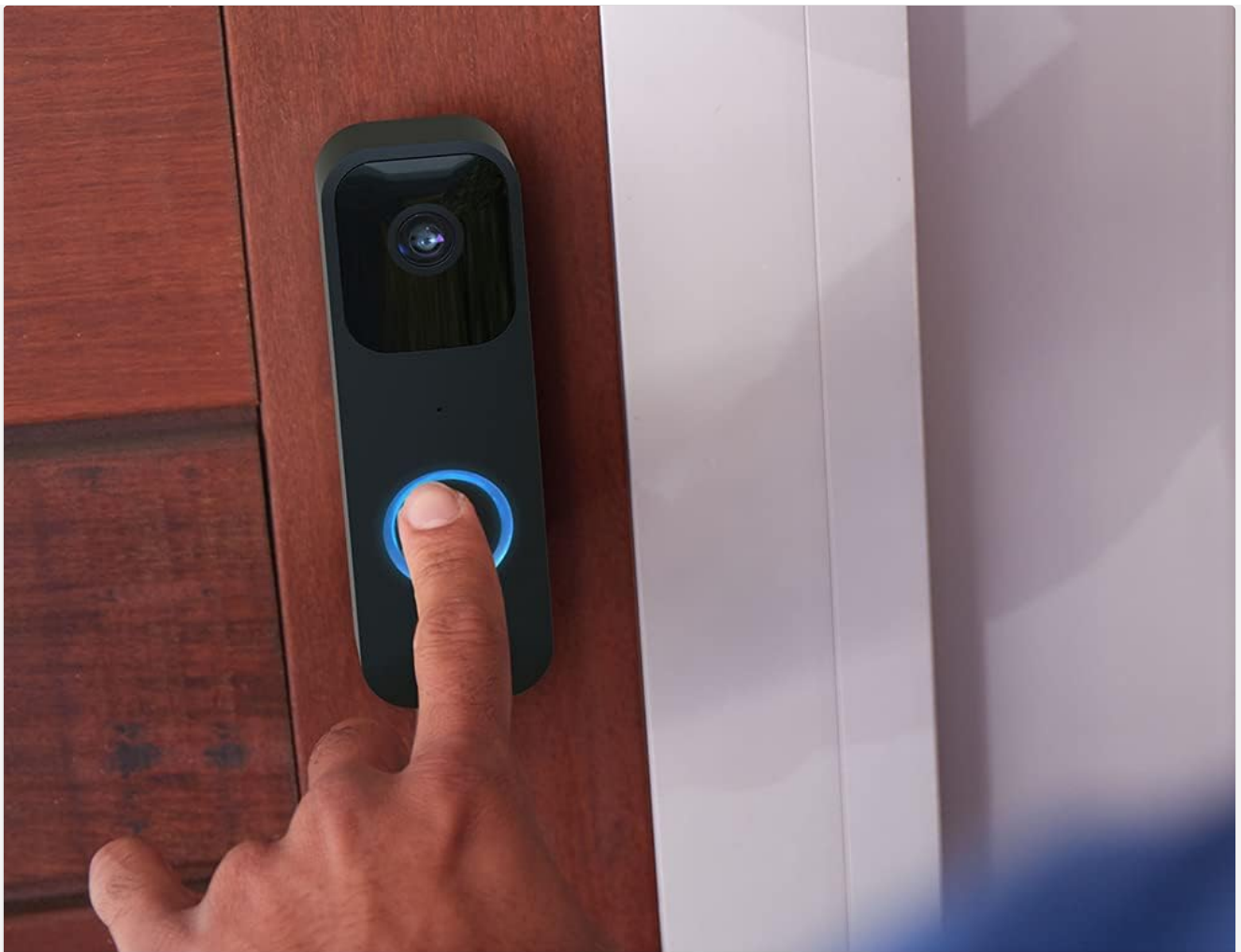
When someone presses your Blink Video Doorbell, you will receive a notification on your smartphone. Tap the notification to view live 1080p HD video and engage in two-way audio communication with the visitor, regardless of your location.



Waar je ook bent, met de Blink-app kun je altijd een oproep aan je deur beantwoorden

Figure 4: Answering a doorbell call and viewing live video on your smartphone via the Blink app.





De app geeft meldingen en met een kabelaansluiting wordt het bestaande deurbelgeluid weergegeven

Figure 5: The Blink Video Doorbell button, which illuminates when pressed.

### Motion Detection and Notifications

The doorbell features a motion sensor that can trigger recordings and send alerts to your phone. You can customize motion detection zones and sensitivity settings within the Blink app to minimize false alerts and optimize battery life.

### Video Recording and Storage

- **Cloud Storage:** A 30-day free trial of the Blink Subscription Plan allows you to save and share video clips in the cloud. After the trial, a subscription is required for cloud storage.
- **Local Storage:** With the Sync Module 2, you can store video clips locally on a USB flash drive (sold separately). This provides a subscription-free option for video storage.

### Alexa Integration

The Blink Video Doorbell is compatible with Amazon Alexa. You can link your Blink account to your Alexa account to receive doorbell announcements on Echo devices and view live feeds on Echo Show devices by voice command.

# MAINTENANCE

## Battery Replacement

The doorbell uses two 1.5V AA lithium metal batteries. Battery life is estimated up to two years, but actual duration depends on device settings, usage, and environmental factors. The Blink app will notify you when battery levels are low. To replace, remove the doorbell from its mount, open the battery compartment, replace with new lithium batteries, and re-mount.

## Cleaning

Wipe the doorbell's exterior with a soft, damp cloth as needed to remove dust and dirt. Avoid using harsh chemicals or abrasive cleaners.

## Software Updates

Ensure your Blink app and device firmware are kept up-to-date for optimal performance and new features. Updates are typically managed through the Blink Home Monitor app.

# TROUBLESHOOTING

- **No Notifications/Live View Delay:** Ensure strong Wi-Fi signal at the doorbell location. Check internet connection. Verify app notification settings are enabled.
- **Short Battery Life:** Reduce motion detection sensitivity, decrease clip length, or consider wired installation if possible. Ensure lithium batteries are used.
- **Doorbell Not Ringing Existing Chime:** Verify correct wired installation and ensure the chime setting is enabled in the Blink app.
- **Sync Module 2 Offline:** Check power connection and Wi-Fi connectivity for the Sync Module 2.
- **Poor Video Quality:** Ensure adequate lighting. Check Wi-Fi signal strength.

For further assistance, refer to the official Blink support page or contact customer service.

# SPECIFICATIONS

Feature	Detail
Video Resolution	1080p HD day, infrared HD night vision
Field of View	135 degrees horizontal, 80 degrees vertical
Frame Rate	Max 30 fps
Audio	Speaker output and two-way audio recording
Power (Doorbell)	2 x 1.5V AA Lithium Metal Batteries (non-rechargeable) or 16-24 VAC existing doorbell wiring
Power (Sync Module 2)	100-220 V AC to 5 V DC converter (included)
Dimensions	130 x 42 x 34 mm
Weight	91 grams

Operating Temperature	-20 to 45 degrees Celsius
Connectivity	2.4 GHz Wi-Fi (802.11b/g/n)
Smartphone Requirements	iOS 12.5+, Android 6.0+, or Fire OS 7+

## WARRANTY AND SUPPORT

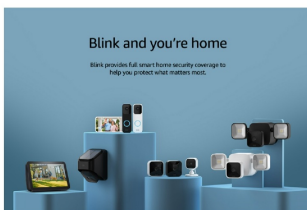
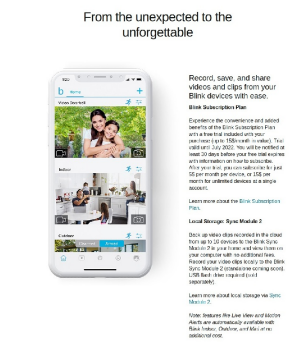
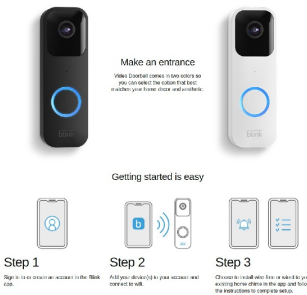
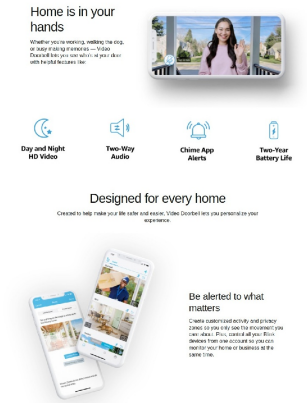
The Blink Video Doorbell + Sync Module 2 comes with a **2-year limited manufacturer's warranty**. This warranty is in addition to your statutory consumer rights and does not affect them.

For detailed support, installation guides, and frequently asked questions, please visit the official Blink support page:

Blink Support  
Page

© 2024 Blink. All rights reserved.





## [pdf] Instructions Borchure

FireShot Capture 021 Introducing Blink Video Doorbell Sync Module 2 Two way audio HD amazon ca better1 2022 02 Product Brochure Better1 Better Products For Living blink video doorbell an company Untitled the instructions to complete setup Record save and share videos clips from your valid until July You will be notified at |||

...

lang: score:22 filesize: 788.4 K page\_count: 0 document date: 0000-00-00

