

## Sans HEPA 13 Air Purifier

# Sans HEPA 13 Air Purifier Instruction Manual

## MODEL: HEPA 13 AIR PURIFIER (WHITE)

Breathe cleaner, healthier air with Sans.

### 1. Introduction

---

This instruction manual provides essential information for the safe and effective use of your Sans HEPA 13 Air Purifier. Please read this manual thoroughly before operating the device and retain it for future reference. Your Sans Air Purifier is designed to improve indoor air quality by filtering out various airborne particles and odors, contributing to a healthier living environment.

### 2. Important Safety Information

---

- Always unplug the air purifier before cleaning, performing maintenance, or when not in use.
- Do not operate the device with a damaged cord or plug. If the cord or plug is damaged, contact customer support.
- Keep the air purifier away from water or wet surfaces. Do not immerse the device in water or other liquids.
- Ensure proper ventilation around the device. Do not block air inlets or outlets.
- Do not insert any objects into the air vents.
- This appliance is not intended for use by persons (including children) with reduced physical, sensory or mental capabilities, or lack of experience and knowledge, unless they have been given supervision or instruction concerning use of the appliance by a person responsible for their safety.
- Children should be supervised to ensure that they do not play with the appliance.

### 3. Product Overview

---

The Sans HEPA 13 Air Purifier is engineered to deliver clean air efficiently and quietly. It features a multi-stage filtration system and smart technology for optimal performance.

## Key Features:

- **Coverage:** Cleans air in spaces up to 1560 sq. ft. per hour.
- **Multi-Stage Filtration:** Includes a pre-filter, medical-grade HEPA 13 filter, activated carbon filter, and internal UV-C light.
- **Particle Removal:** Removes over 99.9% of particles down to 0.1 microns, including pollutants, allergens, dust, dander, harmful chemicals, gases, and odors.
- **Smart Technology:** Equipped with precise sensors to measure air quality (AQI) and automatically adjust fan settings.
- **Air Quality Display:** Easy-to-read display provides real-time insight into your space's air quality.
- **Whisper Quiet Sleep Mode:** Operates silently and turns off display lights for undisturbed sleep.



Figure 3.1: Sans HEPA 13 Air Purifier with packaging.



Figure 3.2: Illustration of the air purifier's effectiveness against various airborne particles.

### Filtration System:

The Sans Air Purifier utilizes a comprehensive four-stage filtration process:

1. **Pre-Filter:** Captures larger particles such as dust, pet hair, and dander.
2. **HEPA-13 Filter:** A medical-grade filter that traps smoke, ash, PM2.5, and PM10 particles.
3. **Activated Carbon Filter:** Neutralizes chemicals, odors, and gases.
4. **Internal UV-C Light:** Acts as a final layer of defense against airborne pathogens.

## 4. Setup

1. **Unpack:** Carefully remove the air purifier from its packaging.
2. **Filter Installation:** Ensure all filters are correctly installed and any protective packaging is removed. Refer to Section 6: Maintenance for detailed filter replacement instructions.
3. **Placement:** Place the air purifier on a flat, stable surface, ensuring adequate space (at least 6 inches) around all sides for optimal airflow. Avoid placing it directly against walls or furniture.
4. **Power Connection:** Plug the power cord into a standard electrical outlet.



Figure 4.1: Proper placement of the air purifier in a living space.

## 5. Operating Instructions

---

The control panel on top of the air purifier allows for easy operation and monitoring.

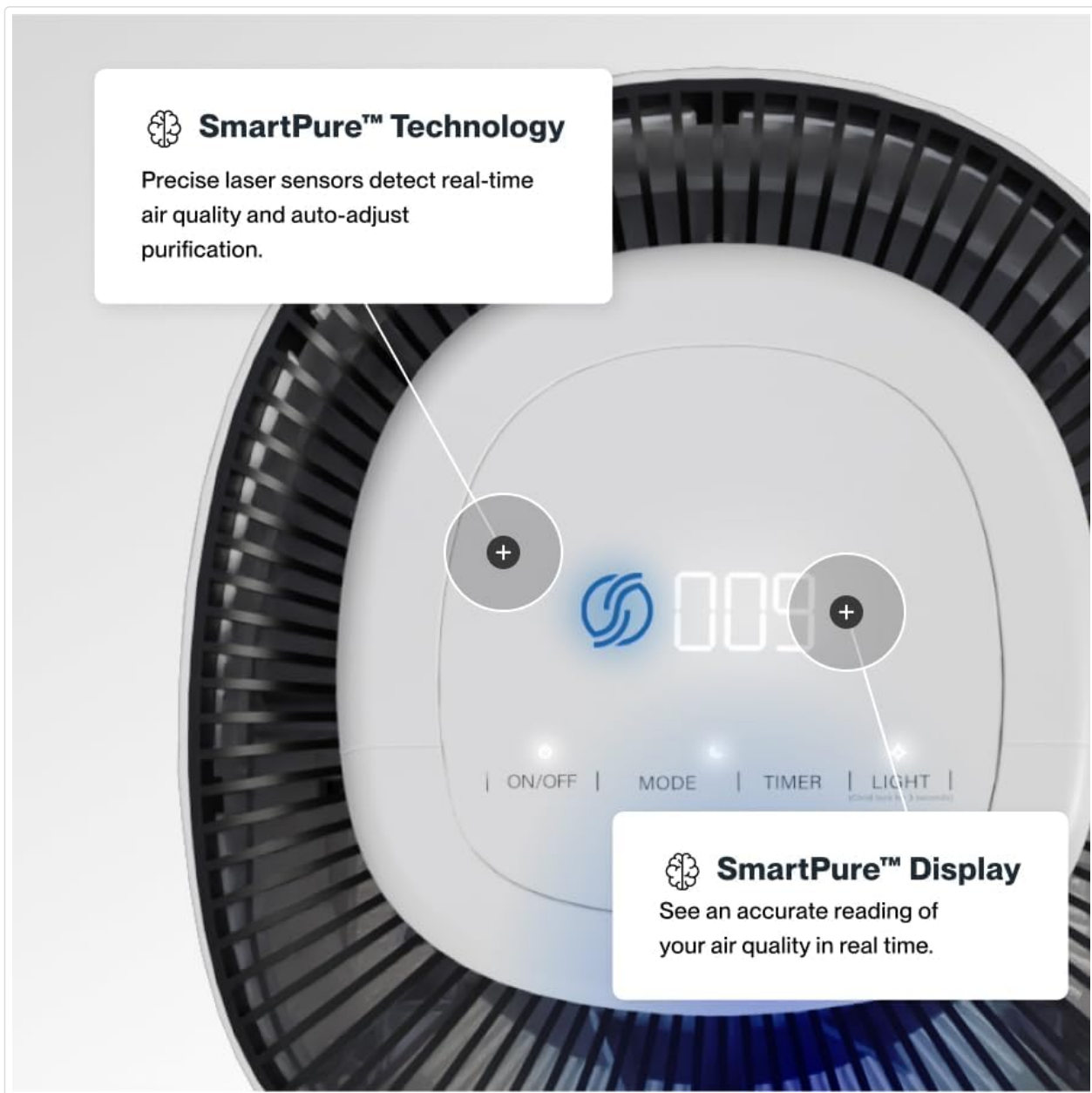


Figure 5.1: Control panel with SmartPure Display and buttons.

### Control Panel Functions:

- **Power Button ( ):** Press to turn the unit On or Off.
- **Mode Button ( ):** Cycles through fan speeds (Low, Medium, High) and Auto Mode.
- **Sensor Mode ( ):** Displays PM2.5 or VOC levels.
- **Timer Button (⊖):** Sets the operating time (e.g., 2H, 4H, 8H).
- **Light Button ( ):** Turns the ambient light On or Off.
- **Sleep Mode:** Activates quiet operation and turns off display lights for minimal disturbance.

### Air Quality Indicator:

The ambient light ring and digital display provide real-time air quality feedback:

- **Blue Light:** Indicates clean air.
- **Red/Purple Light:** Indicates dirty air, and the unit will increase fan speed in Auto Mode to clean the air.
- **Digital Display:** Shows the Air Quality Index (AQI) or specific pollutant levels (PM2.5, VOC). Lower numbers indicate cleaner air.

Your browser does not support the video tag.

Video 5.1: Demonstration of Sans Air Purifier features and operation, including fan speed and air quality indicator.

## 6. Maintenance

Regular maintenance ensures optimal performance and longevity of your Sans Air Purifier.

### Filter Replacement:

The Sans filter is designed for approximately three months of continuous use (24/7). A light on the control panel will illuminate to indicate when the filter needs to be changed.

1. **Power Off:** Unplug the air purifier from the power outlet.
2. **Access Filter:** Press down on the release button on the back of the machine to open the filter compartment cover.
3. **Remove Old Filter:** Gently pull out the used filter.
4. **Insert New Filter:** Place the new Sans filter into the compartment, ensuring it is seated correctly.
5. **Close Compartment:** Reattach the filter compartment cover until it clicks securely into place.
6. **Reset Filter Indicator:** After replacing the filter, press and hold the filter reset button (usually indicated by a filter icon) on the control panel for 3-5 seconds until the indicator light turns off.

Your browser does not support the video tag.

Video 6.1: Step-by-step guide on how to change the Sans Air Purifier filter.

### Cleaning the Exterior:

Wipe the exterior of the air purifier with a soft, dry cloth. Do not use abrasive cleaners or solvents.

## 7. Troubleshooting

If you encounter any issues with your Sans Air Purifier, refer to the following common problems and solutions:

Problem	Possible Cause	Solution
Unit does not turn on.	Power cord not securely plugged in; no power from outlet.	Check power cord connection; try a different outlet.
Airflow is weak or noisy.	Filter is dirty or blocked; air inlets/outlets are obstructed.	Replace the filter (see Section 6); ensure no obstructions around the unit.
Air quality reading (AQI) is consistently high.	High levels of pollutants in the environment; sensor is dirty.	Ensure the unit is running in Auto or High mode; clean the air quality sensor (refer to manufacturer's guide for sensor location).
Filter replacement indicator remains on after changing filter.	Filter indicator not reset.	Press and hold the filter reset button for 3-5 seconds.

If the problem persists after attempting these solutions, please contact Sans customer support.

## 8. Specifications

---

- **Brand:** Sans
- **Model:** HEPA 13 Air Purifier
- **Color:** White
- **Product Dimensions:** 10"D x 11.5"W x 20"H (10 x 11.5 x 20 inches)
- **Weight:** 14 Pounds
- **Floor Area Coverage:** 1560 Square Feet (per hour)
- **Certifications:** CARB Certified, ETL Certified, FCC Certified
- **First Available:** January 5, 2021

**Compact enough for small spaces,  
powerful enough for large ones.**

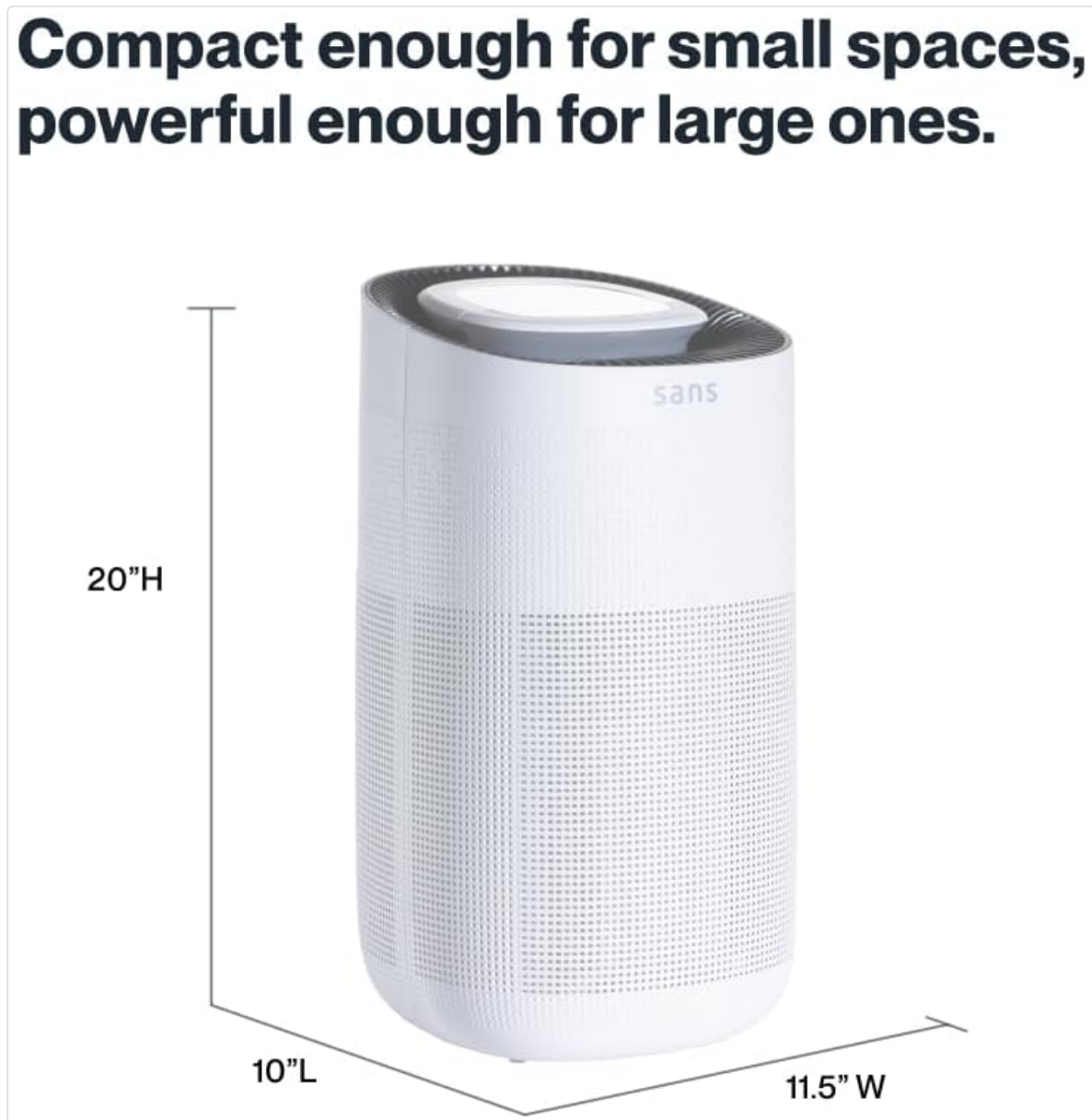





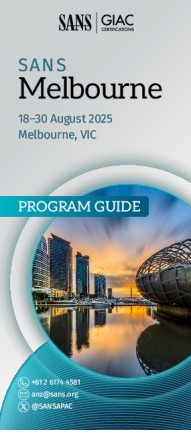
Figure 8.1: Sans Air Purifier dimensions.

## 9. Warranty and Support

---

For warranty information, product support, or to purchase replacement filters, please visit the official Sans Home Wellness website or contact their customer service directly. Details regarding available protection plans can also be found through authorized retailers.

## Related Documents - HEPA 13 Air Purifier

 The image shows the cover of the 'SANS Security West 2023 Program Guide'. It features a blue background with a city skyline at night. The text includes 'SANS   GIAC', 'SANS Security West 2023', 'May 15-20   San Diego, CA', and 'Program Guide'. Social media handles for @SANSInstitute and #SANSWest are also present.	<p><a href="#">SANS Security West 2023 Program Guide - San Diego, CA</a></p> <p>Official program guide for SANS Security West 2023, held May 15-20 in San Diego, CA. Features keynote sessions, course schedules, bonus events, hotel information, and free resources from SANS Institute and GIAC Certifications.</p>
 The image is a document titled 'SEC588: Cloud Penetration Testing'. It includes the SANS and GIAC logos and provides a detailed overview of the course content, including topics like IaaS, PaaS, and SaaS environments.	<p><a href="#">SEC588: Cloud Penetration Testing Course   SANS Institute &amp; GIAC</a></p> <p>Detailed overview of SANS SEC588: Cloud Penetration Testing course, covering IaaS, PaaS, and SaaS environments, modern attack techniques, and GIAC GCPN certification. Learn to assess cloud security with hands-on labs.</p>
 The image is a document titled 'FOR528 Ransomware Incident Response Workshop System Requirements'. It lists the hardware, OS, and virtualization software prerequisites for attending the workshop.	<p><a href="#">FOR528 Ransomware Incident Response Workshop System Requirements</a></p> <p>Detailed system and software requirements for attending the SANS FOR528 Ransomware for Incident Responders workshop, including hardware, OS, and virtualization software prerequisites.</p>
 The image shows the cover of the 'SANS Melbourne 2025 Program Guide'. It features a blue and white design with a city skyline. The text includes 'SANS   GIAC', 'SANS Melbourne', '18-30 August 2025', 'Melbourne, VIC', and 'PROGRAM GUIDE'. Contact information for phone, email, and social media is provided at the bottom.	<p><a href="#">SANS Melbourne 2025: Cybersecurity Training Program Guide</a></p> <p>Explore the SANS Melbourne 2025 program, featuring advanced cybersecurity courses, event details, and registration information for professionals seeking to enhance their skills in areas like incident response and ethical hacking.</p>





[SANS Security West 2024: Program Guide and Course Schedule](#)

Official program guide for SANS Security West 2024 in San Diego, CA (May 9-14). Discover courses, keynotes, workshops, and events for cybersecurity professionals.



[Securing the Connected Vehicle: SANS Cybersecurity Training Roadmap](#)

Explore SANS Institute's comprehensive cybersecurity training roadmap for securing the connected vehicle. Discover courses, certifications, and expert-led training to safeguard against evolving threats. Includes details on SANS Security East, West, and other global events.