

[Manuals.plus](#) /

> [VENZ](#) /

> VENZ R4115 Doorbell Camera User Manual

VENZ R4115

VENZ R4115 Doorbell Camera User Manual

Model: R4115

INTRODUCTION

The VENZ R4115 Doorbell Camera is designed to enhance your home security by providing a clear view of your doorstep. It captures a wide 180-degree diagonal viewing angle, allowing you to see visitors from head to toe and packages on the ground. Equipped with night vision, it ensures clear visibility even in low-light conditions. The two-way audio feature enables communication with visitors, and motion detection provides real-time alerts to your smartphone.

PACKAGE CONTENTS

Before installation, please verify that all components are present:

- VENZ R4115 Doorbell Camera (Camera Body)
- Mounting Hardware
- User Manual (this document)
- Power Kit (if applicable for wired installation)

SETUP AND INSTALLATION

Follow these steps to set up and install your VENZ R4115 Doorbell Camera.

1. Download the Wox Security App

Search for "Wox Security" in your smartphone's app store (iOS or Android) and download the application. This app is required for device configuration and operation.

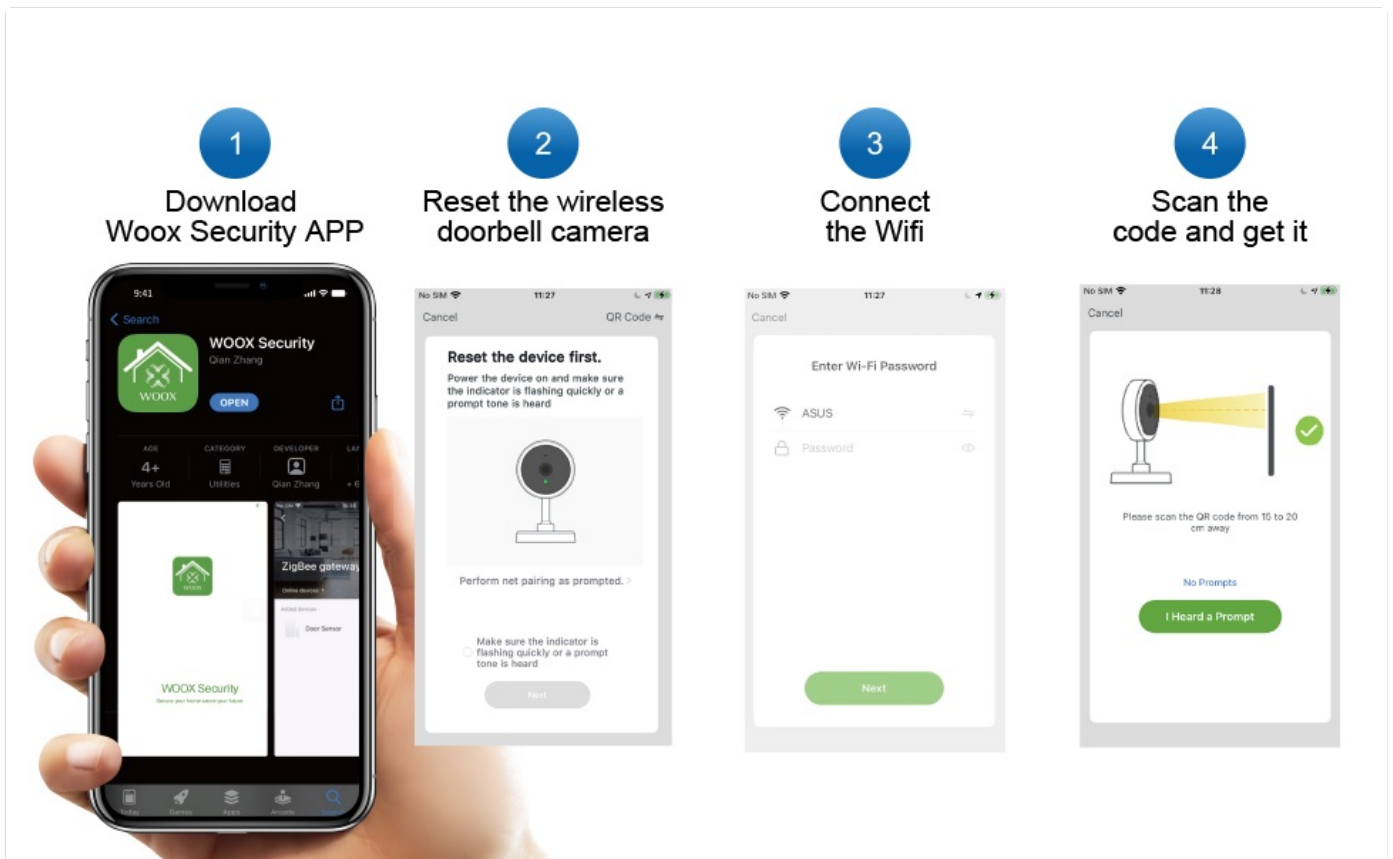


Image: Steps for downloading the WooX Security APP, resetting the doorbell camera, connecting to Wi-Fi, and scanning a QR code for setup.

2. Install the Power Kit (if applicable)

If your installation requires a power kit, follow the instructions provided with the kit to connect it to your existing doorbell wiring. Ensure power is off before handling electrical connections.



Image: Step-by-step diagram illustrating the installation of the power kit, followed by mounting the smart doorbell and tightening security screws.

3. Mount Your Smart Doorbell

Securely mount the doorbell camera to your desired location using the provided mounting hardware. Ensure it is positioned to capture the optimal viewing area.

4. Reset and Connect to Wi-Fi

Power on the device. Follow the in-app instructions to reset the doorbell camera. Once reset, connect the device to your 2.4GHz Wi-Fi network through the Woor Security app. You may need to scan a QR code displayed on your phone with the doorbell camera.

OPERATING INSTRUCTIONS

Live View and Two-Way Audio

Open the Wox Security app to access the live video feed from your doorbell camera. Tap the microphone icon to enable two-way audio, allowing you to speak with visitors and hear their responses.



Image: A person pressing the doorbell button, while another person views the live feed and communicates using real-time two-way audio on a smartphone.

Motion Detection and Alerts

The doorbell camera features improved motion detection. You will receive real-time notifications on your smartphone when motion is detected at your door. Sensitivity settings can be adjusted within the app to minimize false alerts.

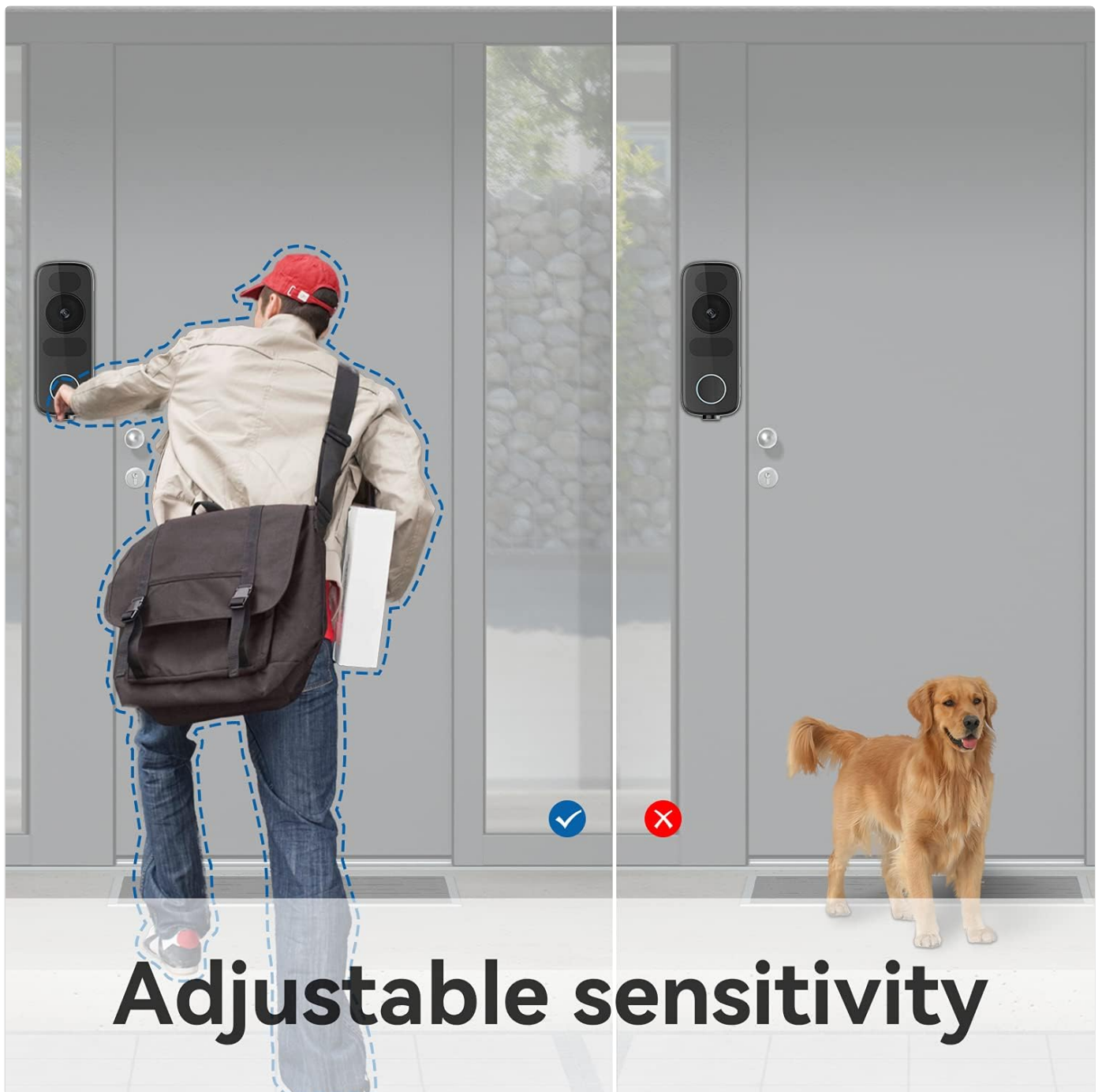


Image: Comparison showing the doorbell detecting a person (checked) but not a dog (crossed out), demonstrating adjustable sensitivity.

Night Vision

The VENZ R4115 is equipped with infrared night vision, providing clear video quality even in complete darkness. The camera automatically switches between day and night modes.



Real-time Two-way Audio

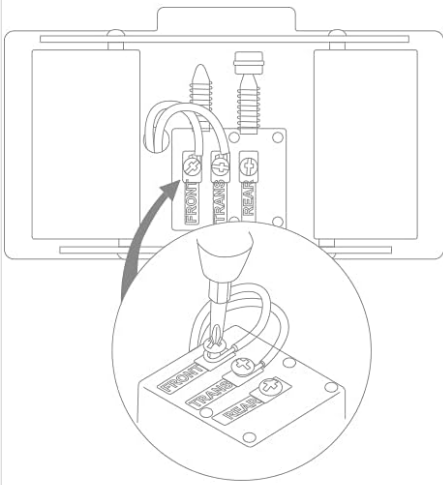
Image: A split image showing a person at the door in daylight (left) and the same scene in night vision (right), both displayed on a smartphone, highlighting 1080P and night vision features.

Storage Options

The doorbell camera supports both cloud storage and local storage via a microSD card (up to 128GB, sold separately). Configure your preferred storage method within the app settings.

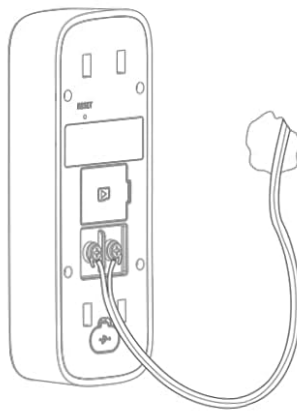
1

Install the Power Kit



2

Install your Smart Doorbell



3

Tighten the security

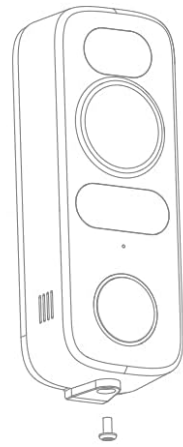


Image: The VENZ doorbell camera displayed alongside icons indicating support for Cloud Storage and a maximum of 128GB SD card storage.

MAINTENANCE

- **Cleaning:** Use a soft, damp cloth to clean the camera lens and body. Avoid abrasive cleaners or solvents.
- **Firmware Updates:** Regularly check the Wox Security app for available firmware updates to ensure optimal performance and security.
- **Wi-Fi Connection:** Ensure a stable Wi-Fi connection for uninterrupted operation.

TROUBLESHOOTING

Problem	Possible Solution
---------	-------------------

Problem	Possible Solution
Device not connecting to Wi-Fi	Ensure your Wi-Fi network is 2.4GHz. Check Wi-Fi password. Move the doorbell closer to the router. Reset the device and try pairing again.
No motion detection alerts	Check motion detection settings in the app. Adjust sensitivity. Ensure the camera lens is clean and unobstructed.
Poor video quality	Check your Wi-Fi signal strength. Clean the camera lens. Ensure adequate lighting for optimal night vision performance.
Two-way audio not working	Check microphone and speaker permissions for the app on your phone. Ensure the doorbell's microphone and speaker are not obstructed.

SPECIFICATIONS

Feature	Detail
Model	R4115
Video Capture Resolution	1080p Full HD
Viewing Angle	180 Degrees
Special Features	Night Vision, Motion Detection, Two-Way Audio
Connectivity Technology	Wireless (Wi-Fi)
Storage	Cloud Storage, Supports up to 128GB MicroSD Card
Power Source	AC (Wired)
Material	Metal
Dimensions (L x W x H)	5 x 2.4 x 13.3 cm (approx. 1.97 x 0.93 x 5.23 inches)
Indoor/Outdoor Use	Outdoor
Compatible Devices	Smartphone, Tablet (via Wox Security App)

WARRANTY AND SUPPORT

The VENZ R4115 Doorbell Camera comes with a **1-year warranty** from the date of purchase. This warranty covers manufacturing defects and malfunctions under normal use. For warranty claims or technical support, please contact VENZ customer service through their official website or the contact information provided with your purchase. For further assistance, refer to the Wox Security app's help section or visit the VENZ support page online.

