

TOPDON TT TOPDON AL500

TOPDON AL500 OBD2 Scanner Instruction Manual

Model: AL500 | Brand: TOPDON

PRODUCT OVERVIEW

The TOPDON AL500 OBD2 Scanner is a versatile diagnostic tool designed to help users identify and resolve vehicle issues. It can effectively turn off the Check Engine Light by inspecting smog-related problems and providing diagnostic trouble codes (DTCs). The device supports all 10 OBD2 modes for most 1996 and newer vehicles, including those compatible with OBDII and CAN protocols.

A key feature is the I/M Readiness function, which allows users to quickly check if their vehicle is ready for a smog test, ensuring compliance and proper repair verification. The AL500 also offers comprehensive car status scanning, including O2 Sensor Test, On-board Monitor, Freeze Frame, and EVAP Test, to maintain vehicle safety and performance.

For user convenience, the scanner is plug-and-play and includes a built-in DTC library with over 3000 detailed definitions. Its intuitive design features a 3-color LED indicator for immediate car health status, and a unique LED light on the OBD2 cable to assist in locating the vehicle's port in low-light conditions.



Image: The TOPDON AL500 OBD2 Scanner displaying its main menu and highlighting key functions like Full OBD Functions, DTC Lookup, Smog Test, and LED on Connector.

WHAT'S INCLUDED

- 1*AL500 Code Reader
- 1*User Manual

KEY FEATURES

Comprehensive OBD2 Functions

The AL500 supports all 10 OBD2 test modes, enabling users to read and erase diagnostic trouble codes (DTCs), view live data streams, perform O2 sensor tests, and conduct EVAP system tests. This comprehensive functionality helps in quickly identifying and resolving issues that trigger the Check

ALL IN ONE AL500



Read Codes

Erase Codes

Live Data

Freeze Frame

I/M Readiness Status

O2 Sensor Test

On-board Monitor System Test

VIN Information

EVAP System

DTC Lookup

TFT Color screen

Prints Data

upgrade

Image: The AL500's main menu showcasing icons for various OBD2 functions including Read Codes, Erase Codes, Live Data, Freeze Frame, I/M Readiness Status, O2 Sensor Test, On-board Monitor System Test, VIN Information, and EVAP System.

I/M Readiness and Smog Test Assistance

With its patented One-Click I/M Readiness Test Status, the AL500 allows users to quickly determine if their vehicle's emission systems are ready for a smog test. This feature is crucial for ensuring compliance with state emission regulations and can help avoid failed inspections.

AL500-DESIGNED FOR DIYERS



Image: The AL500 displaying live data streams such as intake temperature and fuel consumption, alongside indicators for Smog Check readiness and Check Engine Light status.

Live Data in Graphic Format

The device provides live data in a graphic format, making it easy to monitor and evaluate various vehicle parameters in real-time. This visual representation aids in diagnosing intermittent issues and understanding vehicle performance trends.

Built-in Code Library and PC Print

The AL500 features a built-in DTC library that provides detailed definitions for retrieved trouble codes, eliminating the need for external searches. Additionally, it supports PC printing, allowing users to generate hard copies of diagnostic reports for record-keeping or sharing with mechanics.

DATA PRINTING DTC LOOKUP

**With DTC Look Up
You Got It In 2 Seconds!**

DTC LOOKUP
Please input DTC:
P0000
The 1st range:P,C,B,U
The 2nd range:0,1,2,3
The others from 0 to F
Press [▲] or [▼] to change input,press [▶] or [◀] to select position, then press [OK] to confirm.
▲ ▼ ▶ OK



**Printable Diagnostic Report
Easy to Save and Review!**

Image: A visual representation of the DTC Lookup function on the AL500 screen and the process of connecting the scanner to a PC for printing diagnostic reports.

Integrated LED Light and Multi-language Support

A unique LED light integrated into the OBD2 cable helps users locate the diagnostic port, especially in dimly lit environments. The device also supports multiple languages, including English, French, Japanese, German, Portuguese, Russian, and Spanish, enhancing usability for a global audience.

WHAT'S DIFFERENT IN AL500?

A blue rounded rectangle containing the white text 'I/M'.

I/M Hotkey

For Quick Access To I/M Readiness Function

A blue rounded rectangle containing the white text 'HELP'.

HELP Hotkey

For Detailed Descriptions/Tips Of Diagnostics

A blue rounded rectangle containing three colored circles: red, yellow, and green.

3-Color LED Indicators

Green For No DTC, Yellow For Pending DTC,
Red For Permanent DTC

A blue rounded rectangle containing a white car adapter with a yellow LED light icon on its front.

LED Light in Adapter

For Inspection In The Low-Light Environment/
In The Darkness

Image: A graphic detailing the unique features of the AL500, including I/M Hotkey, HELP Hotkey, 3-Color LED Indicators, and the LED Light in the Adapter.

SETUP

Connecting the Device

The AL500 is designed for plug-and-play operation. Locate your vehicle's 16-pin OBD2 diagnostic link connector (DLC), typically found under the dashboard on the driver's side. Plug the AL500's cable into the vehicle's DLC. The integrated LED light on the cable will illuminate to assist in dark conditions.

AL500 WORKS ON MOST



1996

US-based Cars



2000

EU-based Cars



2008

Asia-based Cars

Compatible with All OBD2 Protocols

KWP2000

ISO9141

J1850 VPW

J1850 PWM

CAN
(Controller Area Network)

Language



Image: The AL500's broad vehicle compatibility, showing it works with US-based cars since 1996, EU-based cars since 2000, and Asia-based cars since 2008, along with supported OBD2 protocols.

OPERATING INSTRUCTIONS

Navigating the Menu

The AL500 features a user-friendly interface with a directional pad and dedicated buttons for HELP, I/M, OK, and EXIT. The main menu provides access to various functions: Diagnose, I/M Readiness, Review, Lookup, Print, Help, Setup, and Info.

Reading and Erasing Codes

From the 'Diagnose' menu, select 'Read Codes' to retrieve current, pending, and permanent diagnostic trouble codes. After performing necessary repairs, select 'Erase Codes' to clear the DTCs and turn off the Check Engine Light.

I/M Readiness Test

Press the dedicated 'I/M' button for a quick check of your vehicle's emission system status. This will indicate whether all monitors are ready for an emissions test.

Live Data Stream

Select 'Data Stream' from the 'Diagnose' menu to view real-time operational parameters of the vehicle. You can choose to view all items, select specific items, or view graphic items for a visual representation of the data.

DTC Lookup

Use the 'Lookup' function to input a DTC and receive a detailed description directly on the device screen, eliminating the need for external resources.

MAINTENANCE AND UPDATES

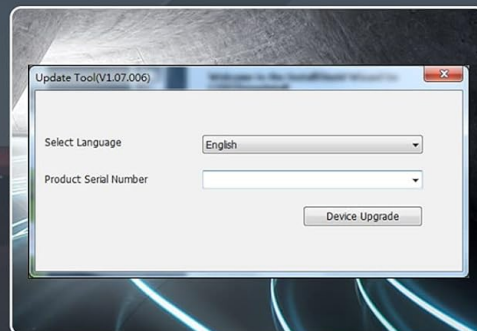
Software Updates

The TOPDON AL500 offers lifetime free software updates to ensure compatibility with new vehicle models and diagnostic protocols. To update, connect the scanner to a Windows PC via the provided USB cable, download and install the update tool from the TOPDON website, register your product, and follow the on-screen instructions to start the update process.

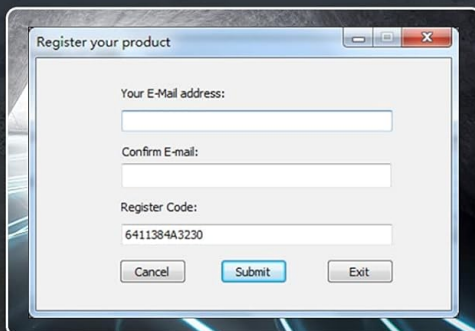
LIFETIME FREE UPDATE



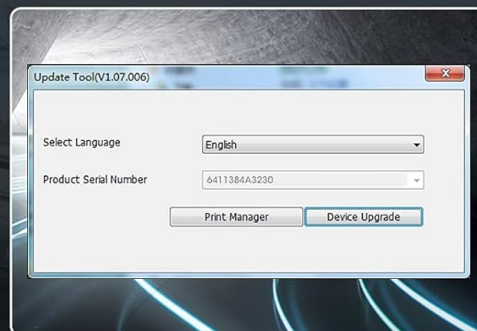
01 Download & Install the Update Tool in PC



02 Connect the Scanner to PC and Run the Update Tool



03 Check the Serial No.; Register the Scanner



04 Choose the Software and Start Updating

! AL500 can only be updated with Windows System.

Image: A four-step guide illustrating the process of updating the AL500: Download & Install the Update Tool,

Cleaning the Device

To maintain the device, wipe the exterior with a soft, damp cloth. Avoid using abrasive cleaners or solvents. Ensure the device is dry before storage.

TROUBLESHOOTING

If you encounter issues with your TOPDON AL500, refer to the comprehensive troubleshooting guide for common problems and solutions. For more detailed assistance, please consult the official user manual or contact TOPDON customer support.

For a detailed troubleshooting guide, please refer to the [Troubleshooting Guide \(PDF\)](#).

TECHNICAL SPECIFICATIONS

Specification	Value
Manufacturer	TT TOPDON
Brand	TOPDON
Model	ArtiLink 500
Item Weight	9.5 ounces
Product Dimensions	6.4 x 3.7 x 1.2 inches
Item model number	TT TOPDON AL500
Batteries	1 Lithium Metal batteries required.
Manufacturer Part Number	TT TOPDON AL500
ASIN	B08RNQ568X
Date First Available	December 30, 2020
Operating System	ARM
Display resolution	320x240
UPC	632111336688

WARRANTY AND SUPPORT

The TOPDON AL500 comes with a 12-month warranty to guarantee its quality. TOPDON also provides a 2-year warranty for all products. In case of any inquiries, please feel free to contact TOPDON customer support at 833-956-8335 Monday-Friday 9:00AM-6PM Eastern Time.

For complete details and additional support, please refer to the [User Manual \(PDF\)](#).