

JADPES keyrenao0vnhsi2r

JADPES Mini Raclette Set Instruction Manual

Model: keyrenao0vnhsi2r

1. INTRODUCTION

Thank you for choosing the JADPES Mini Raclette Set. This compact and portable raclette grill is designed for melting cheese and preparing small portions of food using candles as a heat source. Crafted from durable carbon steel with a non-stick coating, it offers a convenient and enjoyable cooking experience. Please read this manual thoroughly before first use to ensure safe and optimal operation.

2. SAFETY INFORMATION

- Always use the raclette set on a stable, heat-resistant surface.
- Keep out of reach of children and pets during use.
- The raclette set becomes hot during operation. Use caution and avoid direct contact with hot surfaces.
- Only use standard tea light candles as the heat source. Do not use larger candles or other flammable materials.
- Never leave burning candles unattended.
- Ensure adequate ventilation when using the raclette set indoors.
- Do not immerse the entire unit in water. Refer to the cleaning instructions.
- Allow the unit to cool completely before cleaning or storing.

3. PACKAGE CONTENTS

Carefully unpack all components and ensure you have received the following items:

- 1 x Baking Tray (with foldable handle)
- 1 x Stove (base for candles)

- 1 x Spatula



Image 3.1: All components of the JADPES Mini Raclette Set, including the red stove base, black non-stick baking tray with a wooden handle, and a small black spatula.

4. SETUP

1. **Unpack:** Remove all packaging materials from the raclette set components.
2. **Assemble Stove Base:** The red stove base is designed to fold for compact storage. Carefully unfold it to form a stable rectangular structure.
3. **Position Baking Tray:** Place the non-stick baking tray onto the top of the assembled stove base. Ensure it sits securely.
4. **Insert Candles:** Place one or two standard tea light candles into the designated slots within the stove base.

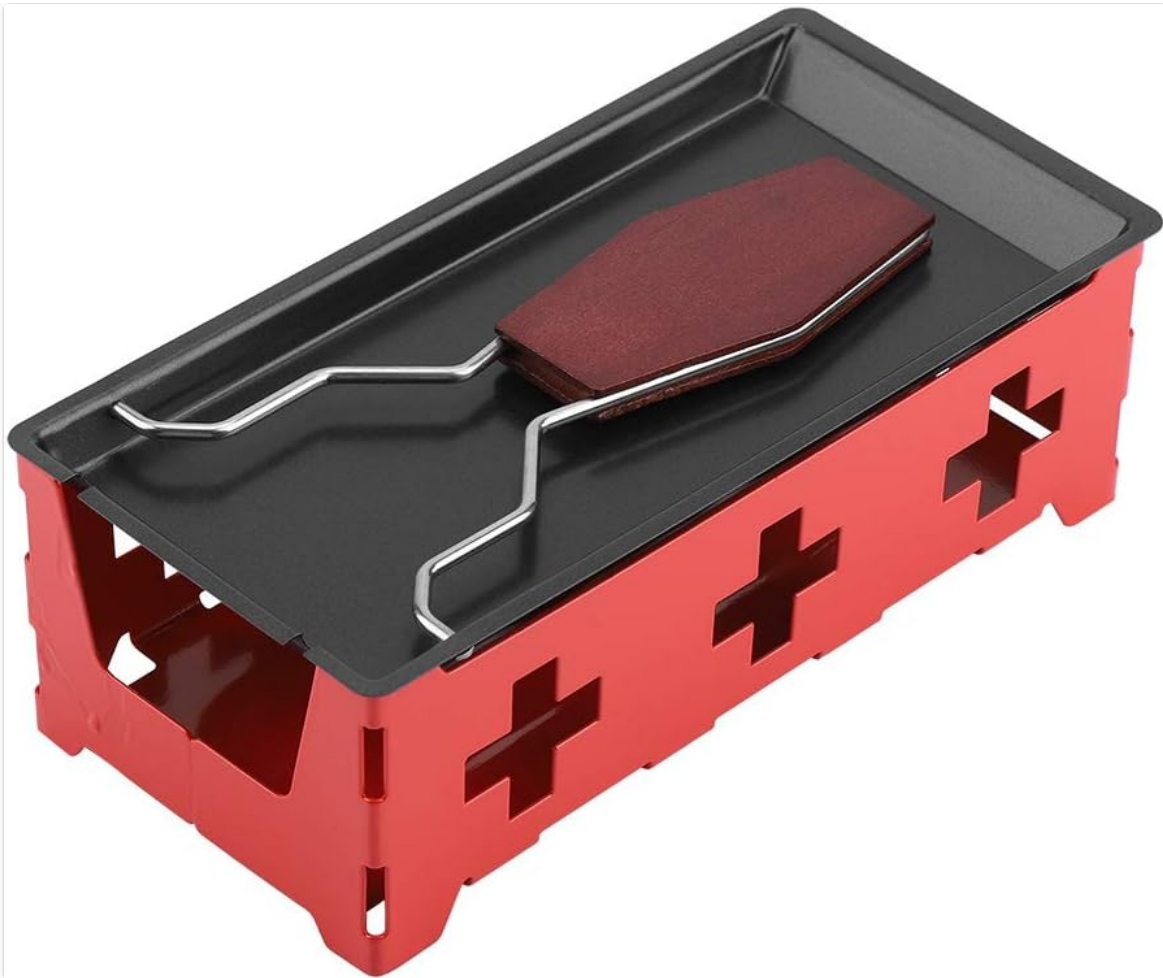


Image 4.1: The JADPES Mini Raclette Set fully assembled, showing the black non-stick baking tray resting on the red stove base.

5. OPERATING INSTRUCTIONS

1. **Prepare Food:** Cut cheese, vegetables, or other desired ingredients into small pieces suitable for the baking tray.
2. **Place Food:** Arrange the prepared food on the non-stick baking tray.
3. **Light Candles:** Carefully light the tea light candles placed in the stove base.
4. **Melt/Cook:** The heat from the candles will gradually melt the cheese or cook the food on the tray. Cooking time will vary depending on the food type and desired doneness.
5. **Serve:** Once melted or cooked, use the provided spatula to remove the food from the tray. The foldable handle allows for easy handling.
6. **Extinguish Candles:** After use, carefully extinguish the candles.



Heated With Candles
this baking tray will evenly melt your cheese

Image 5.1: The raclette set in operation, showing two lit tea light candles heating a tray with melted cheese or an omelet.

6. MAINTENANCE AND CLEANING

Proper care will extend the life of your JADPES Mini Raclette Set.

- **Cool Down:** Always allow the raclette set to cool completely before cleaning.
- **Non-Stick Tray:** The baking tray features a non-stick coating. To preserve this coating, wash it by hand with warm, soapy water and a soft sponge. Avoid abrasive cleaners or metal scouring pads.
- **Stove Base:** Wipe the carbon steel stove base with a damp cloth. Dry thoroughly to prevent rust.
- **Spatula:** The spatula can be washed with warm, soapy water.
- **Storage:** Once clean and dry, the handle of the baking tray can be folded, and the stove base can be disassembled for compact storage.



Non-stick coating design
convenient to use and clean



Image 6.1: A close-up view highlighting the non-stick coating of the raclette baking tray, emphasizing its smooth surface for easy cleaning.

7. TROUBLESHOOTING

Problem	Possible Cause	Solution
Cheese not melting evenly or quickly.	Candles are too small or not lit properly; food pieces are too large.	Ensure candles are fully lit and positioned correctly. Cut food into smaller, thinner pieces.
Food sticking to the tray.	Non-stick coating is damaged; tray not properly cleaned.	Ensure proper cleaning and avoid abrasive utensils. If coating is damaged, consider replacement.
Smoke or unusual odor.	Food residue on heating surface; improper candle use.	Clean the tray thoroughly before use. Ensure only tea light candles are used and they are not directly touching food.

8. SPECIFICATIONS

- **Brand:** JADPES
- **Model:** keyrenao0vnhsi2r
- **Material:** Carbon Steel (Stove Base), Carbon Steel with Non-Stick Coating (Baking Tray)
- **Color:** Red (Stove Base), Black (Baking Tray)
- **Special Feature:** Non-Stick Coating, Foldable Handle
- **Heating Method:** Tea Light Candles (not included)
- **Baking Tray Dimensions (approx.):** 19 cm (7.48 in) x 9.5 cm (3.74 in) x 6 cm (2.36 in)
- **Item Weight:** Approximately 313 grams (11 ounces)

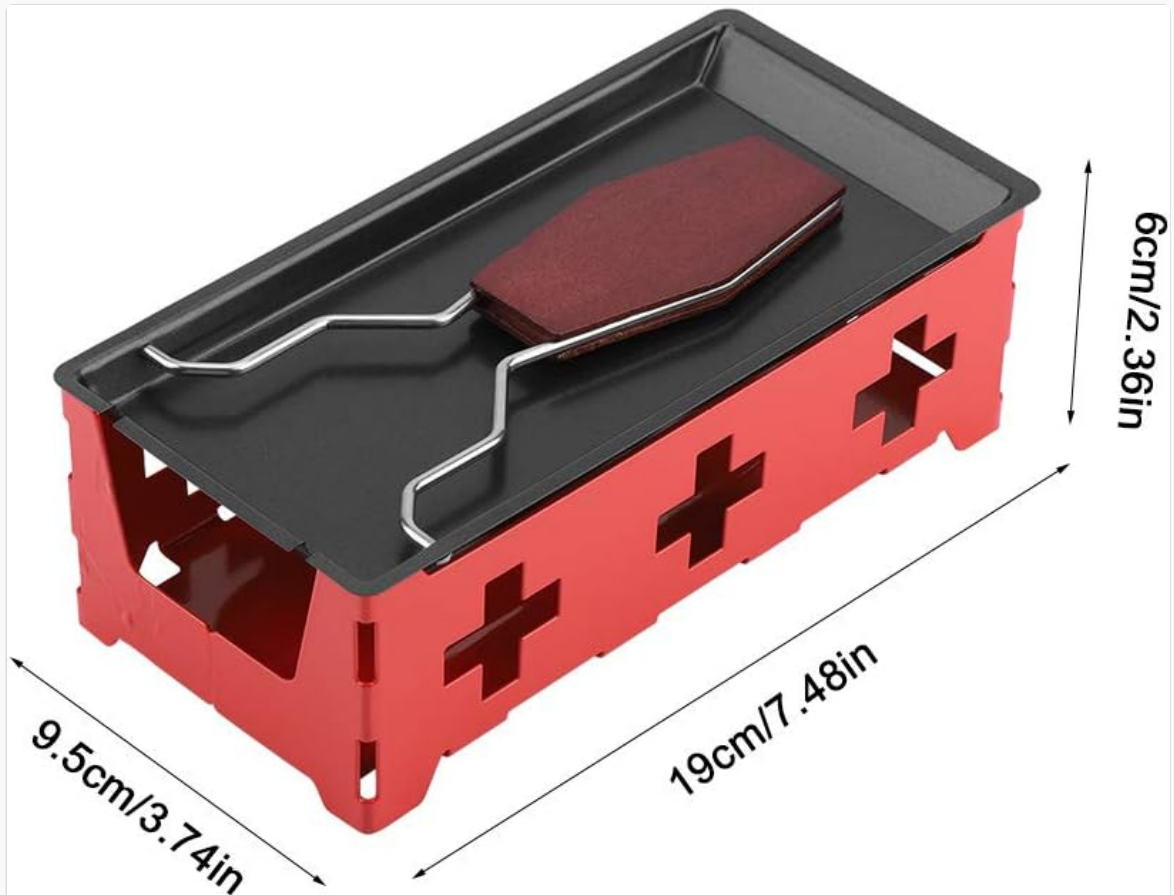


Image 8.1: The assembled JADPES Mini Raclette Set displaying its approximate dimensions: 19cm (7.48in) length, 9.5cm (3.74in) width, and 6cm (2.36in) height.

9. WARRANTY AND SUPPORT

This product is covered by a standard manufacturer's warranty. For specific warranty details, product support, or inquiries, please contact the retailer or manufacturer directly. Please retain your proof of purchase for warranty claims.