



[Manuals.plus](#) /

> [GEARFLAG](#) /

> GEARFLAG Travel Trailer Cover (Fits 15' - 17') Instruction Manual

## GEARFLAG TTC

# GEARFLAG Travel Trailer Cover (Fits 15' - 17') Instruction Manual

Model: TTC

## 1. INTRODUCTION

---

This manual provides detailed instructions for the proper installation, use, and maintenance of your GEARFLAG Travel Trailer Cover. Designed for travel trailers measuring 15 to 17 feet, this cover offers multi-layer protection against various environmental elements, ensuring the longevity and preservation of your RV.

## 2. SAFETY INFORMATION

---

Please read and understand all safety instructions before installing or removing the cover. Failure to follow these instructions may result in injury or damage to the product or your RV.

- Ensure the RV is parked on a level surface and stabilized before installation.
- Use a sturdy ladder or platform for safe access to the RV roof.
- Avoid installing the cover during strong winds or adverse weather conditions.
- Inspect the RV for sharp edges or protrusions that could tear the cover. Pad any sharp areas if necessary.
- Keep children and pets away from the installation area.

## 3. PACKAGE CONTENTS

---

Verify that all items are present in your package:

- GEARFLAG Travel Trailer Cover
- Storage Pouch
- Short Straps (pre-attached or separate)
- Windproof Long Straps (2 units)
- Repair Patch Kit

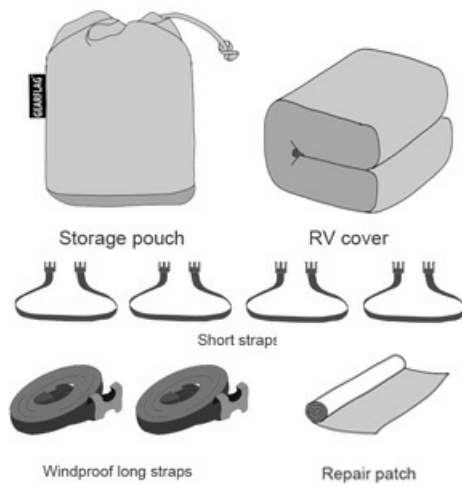


Figure 3.1: Package Contents

## 4. PRODUCT FEATURES

---

The GEARFLAG Travel Trailer Cover is engineered with several features to provide superior protection and ease of use:

- **Heavy Duty Durable Fabric:** Features a 5-layer top panel for maximum protection against rain, snow, and wind.
- **Reinforced Windproof Side-Straps:** Multiple straps on each side, along with two extra-long straps, secure the cover against strong winds.
- **Anti-UV & Water-Resistance:** Protects your RV from harmful UV rays and moisture.
- **Easy Access Zipper Panels:** Two roll-up side zipper panels allow convenient access to the camper door and compartments.
- **Covered Air Vents:** Located on the top panel to promote air exchange and prevent dampness.
- **Elastic Hem:** Secures corners for a snug fit.
- **Tough Interlocking Seams & Double Stitches:** Enhances durability and tear resistance.



Figure 4.1: Key Features Overview

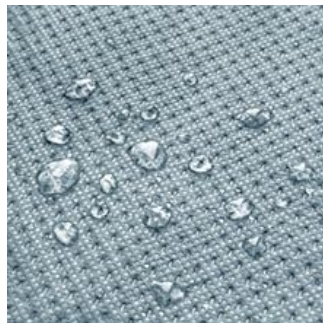


Figure 4.2: Water-Resistant Fabric



Figure 4.3: Breathable Material

## 5. SIZING AND MEASUREMENT

To ensure the correct fit for your travel trailer, accurately measure its length, width, and height. Refer to the diagram below for guidance:

- The dimension should include the spare tire and external ladder.
- Do **not** include wheels, propane tank, or tow bar in the length measurement.

- For rooftop A/C units, add 1 foot to the total length measurement.

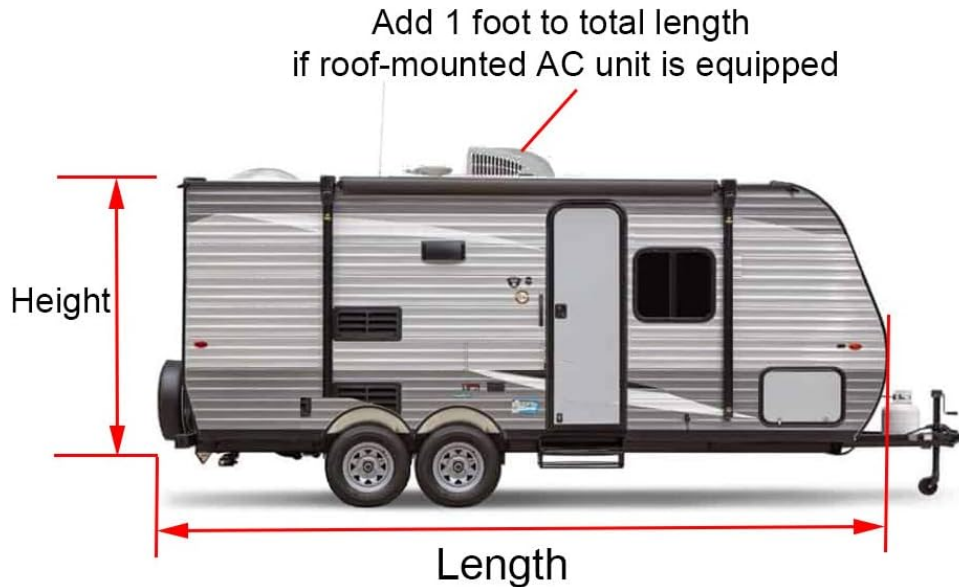


Figure 5.1: RV Measurement Guide



Figure 5.2: RV Size Chart

## 6. INSTALLATION INSTRUCTIONS

Follow these steps for proper installation of your GEARFLAG Travel Trailer Cover:

1. **Prepare the RV:** Clean the RV thoroughly to prevent dirt and debris from scratching the surface under the cover. Ensure all sharp edges are padded.
2. **Unfold the Cover:** Lay the cover flat on the ground behind or in front of your RV. Identify the "FRONT" label to ensure correct orientation.
3. **Position the Cover:** With assistance, carefully pull the cover over the RV, starting from the front. Ensure the zippered side panels align with your RV's doors.
4. **Secure Side Straps:** Fasten the short straps located on the sides of the cover. Adjust them to achieve a snug fit.
5. **Attach Windproof Long Straps:** Use the two extra-long straps provided. Thread them underneath the RV and connect them to the corresponding buckles on the opposite side. Tighten these straps to further secure the cover, especially in windy conditions.
6. **Adjust Elastic Hem:** Ensure the elastic hem at the bottom of the cover is properly positioned around the RV's base for a secure fit.

Video 6.1: GEARFLAG Travel Trailer Cover Installation Guide



Figure 6.1: Covered RV with Straps

## 7. USAGE AND ACCESS

The GEARFLAG Travel Trailer Cover is designed for convenience even when installed:

- **Accessing RV Doors:** Unzip the roll-up side panels to access your RV's entry door or other compartments without removing the entire cover.
- **Air Circulation:** The integrated air vents prevent moisture buildup and allow for proper air circulation, reducing the risk of mold and mildew.

Video 7.1: Zippered Side Panels for Easy Access



Figure 7.1: Side Roll-up Opening

## 8. CARE AND MAINTENANCE

Proper care will extend the life of your RV cover:

- **Cleaning:** Clean the cover periodically with mild soap and water. Rinse thoroughly and allow to air dry completely before folding and storing.

- **Storage:** When not in use, fold the cover neatly and store it in the provided storage pouch in a dry, cool place. The storage pouch can also be used as a tongue jack cover.
- **Repairs:** Use the included repair patch kit for any minor tears or punctures to prevent further damage.
- **Regular Inspection:** Periodically check the cover for any signs of wear, tear, or damage, especially after severe weather.

## 9. TROUBLESHOOTING

Here are solutions to common issues you might encounter:

- **Cover does not fit snugly:** Ensure all straps are tightened and the elastic hem is properly positioned. Re-measure your RV to confirm you have the correct size cover.
- **Cover flapping in wind:** Double-check that all side straps and the two extra-long windproof straps are securely fastened and tightened. Consider adding additional tie-downs if necessary in extremely windy conditions.
- **Moisture under the cover:** Ensure the air vents are not obstructed. If the RV was covered while wet, allow it to dry completely before re-covering. Proper air circulation is key to preventing moisture buildup.
- **Tears or punctures:** Use the provided repair patch kit for small damages. For larger tears, professional repair may be required.

## 10. SPECIFICATIONS

<b>Brand</b>	GEARFLAG
<b>Model</b>	TTC
<b>Item Model Number</b>	TTCGRY52
<b>Coverage</b>	Fits 15' - 17' long travel trailers
<b>Material</b>	Multi-layer (5-layer top panel)
<b>Color</b>	GRAY
<b>Special Features</b>	Air vents, Anti-tear, Windproof side straps
<b>Item Weight</b>	21 pounds
<b>Product Dimensions</b>	205 x 100 x 98 inches (for 15'-17' model)

## 11. WARRANTY AND SUPPORT

GEARFLAG stands behind the quality of its products. For specific warranty details and customer support, please refer to the warranty card included with your purchase or visit the official GEARFLAG website. Keep your proof of purchase for any warranty claims.

For further assistance, please contact GEARFLAG customer service:

- **Website:** [GEARFLAG Official Store](#)
- **Email:** [support@gearflag.com](mailto:support@gearflag.com) (example)
- **Phone:** 1-800-XXX-XXXX (example)

